



Chipsmall Limited consists of a professional team with an average of over 10 year of expertise in the distribution of electronic components. Based in Hongkong, we have already established firm and mutual-benefit business relationships with customers from,Europe,America and south Asia,supplying obsolete and hard-to-find components to meet their specific needs.

With the principle of “Quality Parts,Customers Priority,Honest Operation,and Considerate Service”,our business mainly focus on the distribution of electronic components. Line cards we deal with include Microchip,ALPS,ROHM,Xilinx,Pulse,ON,Everlight and Freescale. Main products comprise IC,Modules,Potentiometer,IC Socket,Relay,Connector.Our parts cover such applications as commercial,industrial, and automotives areas.

We are looking forward to setting up business relationship with you and hope to provide you with the best service and solution. Let us make a better world for our industry!



Contact us

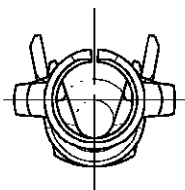
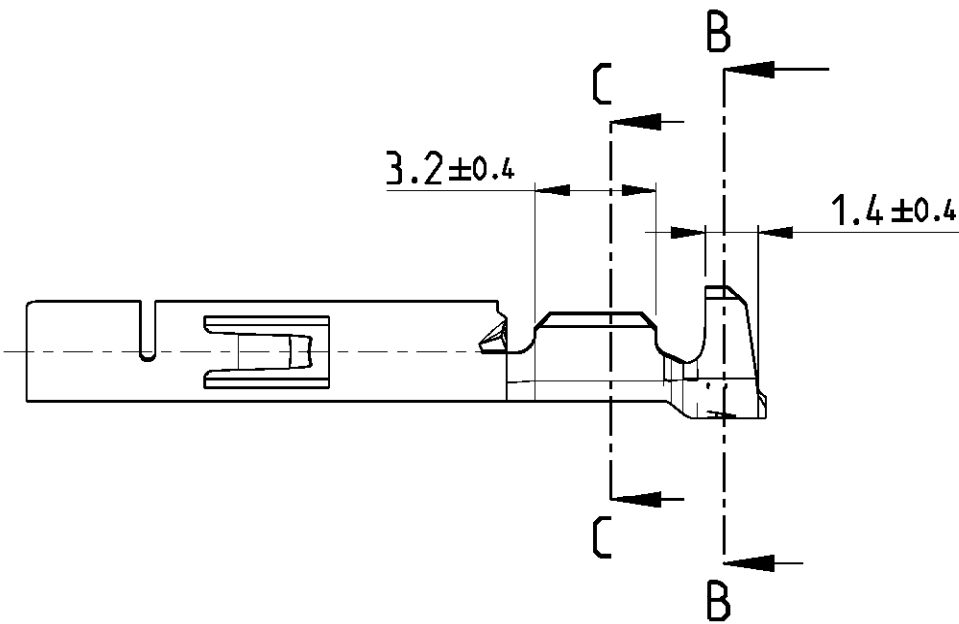
Tel: +86-755-8981 8866 Fax: +86-755-8427 6832

Email & Skype: info@chipsmall.com Web: www.chipsmall.com

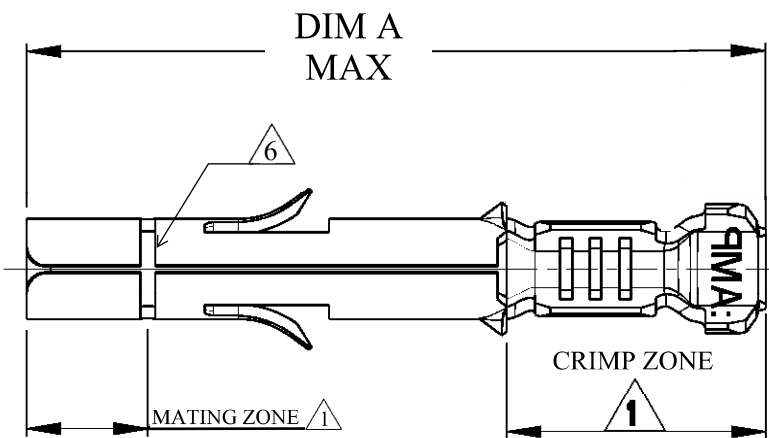
Address: A1208, Overseas Decoration Building, #122 Zhenhua RD., Futian, Shenzhen, China



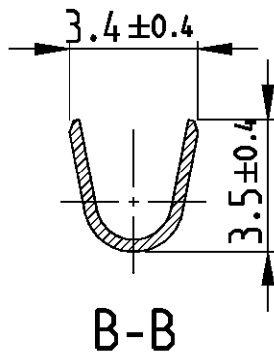
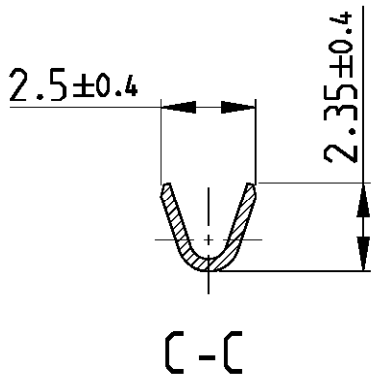
2		1					
LOC	DIST	REVISIONS					
IR	-	P	LTR	DESCRIPTION	DATE	DWN	APVD
			G5	REVISED PER ECR-16-008286	27JUN2016	BW	RS




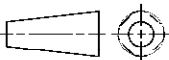
- 1 Au IN MATING ZONE, Sn IN CRIMP ZONE, Ni ON ENTIRE BODY OF TERMINAL.
- 3 INSULATION WIRE RANGE: Ø1.0-2.5mm.
- 6 SLOT IS ONLY AVAILABLE FOR 926895-1 & 926895-3.



926895-1 & -3 SHOWN



OBSOLETE	19.56	1	BRASS	926895-7
	19.35	1	PHOSPHOR BRONZE	926895-6
OBSOLETE	19.35	PRE-TIN PLATED	PHOSPHOR BRONZE	6 926895-3
	19.35		BRASS	926895-2
	19.35	PRE-TIN PLATED	BRASS	6 926895-1
DIM A		FINISH	MATERIAL	PART NO.
		COLOUR		

		DWN J.SALO 10NOV2008		<div>TE Connectivity</div>			
		CHK R.SOLE 10NOV2008					
DIMENSIONS: mm		TOLERANCES UNLESS OTHERWISE SPECIFIED:		APVD P.F.GRASSANO 10NOV2008		NAME	
		0 PL2 ±-		PRODUCT SPEC		UNIVERSAL M-N-L SOCKET 0.2-0.8 SQ.MM WIRE RANGE	
		1 PL2 ±-		108-1031			
		2 PL2 ±-		APPLICATION SPEC			
		3 PL2 ±-		114-1010			
4 PL2 ±-		-		WEIGHT		SIZE	
MATERIAL		FINISH		-		CAGE CODE	
SEE TABLE		SEE TABLE				DRAWING NO	
						RESTRICTED TO	
						-	
CUSTOMER DRAWING				SCALE		REV	
				5:1		G5	
				SHEET		OF	
				1		1	