



Chipsmall Limited consists of a professional team with an average of over 10 year of expertise in the distribution of electronic components. Based in Hongkong, we have already established firm and mutual-benefit business relationships with customers from,Europe,America and south Asia,supplying obsolete and hard-to-find components to meet their specific needs.

With the principle of “Quality Parts,Customers Priority,Honest Operation,and Considerate Service”,our business mainly focus on the distribution of electronic components. Line cards we deal with include Microchip,ALPS,ROHM,Xilinx,Pulse,ON,Everlight and Freescale. Main products comprise IC,Modules,Potentiometer,IC Socket,Relay,Connector.Our parts cover such applications as commercial,industrial, and automotives areas.

We are looking forward to setting up business relationship with you and hope to provide you with the best service and solution. Let us make a better world for our industry!



Contact us

Tel: +86-755-8981 8866 Fax: +86-755-8427 6832

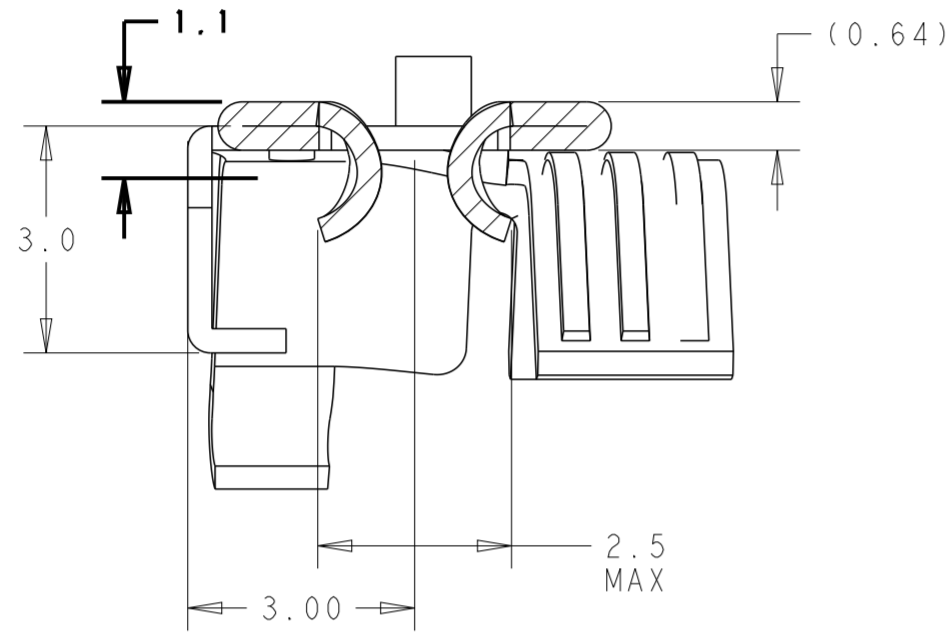
Email & Skype: info@chipsmall.com Web: www.chipsmall.com

Address: A1208, Overseas Decoration Building, #122 Zhenhua RD., Futian, Shenzhen, China

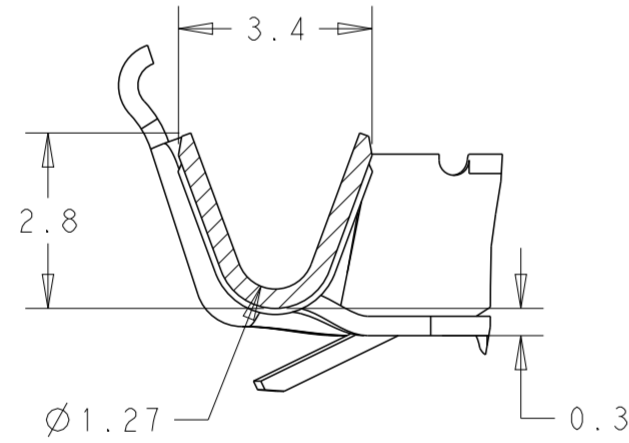


THIS DRAWING IS UNPUBLISHED. RELEASED FOR PUBLICATION 20
 © COPYRIGHT 20 BY - ALL RIGHTS RESERVED.

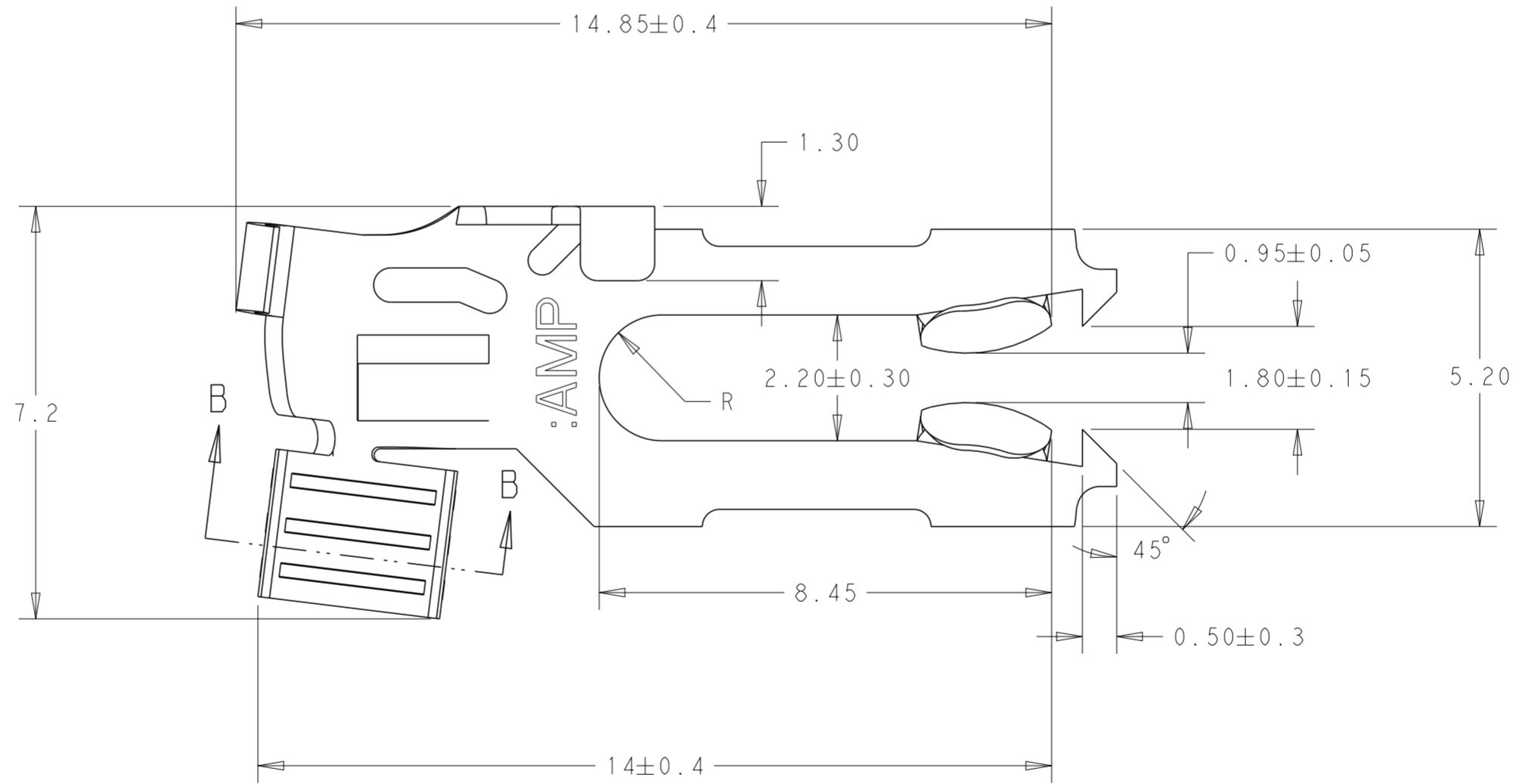
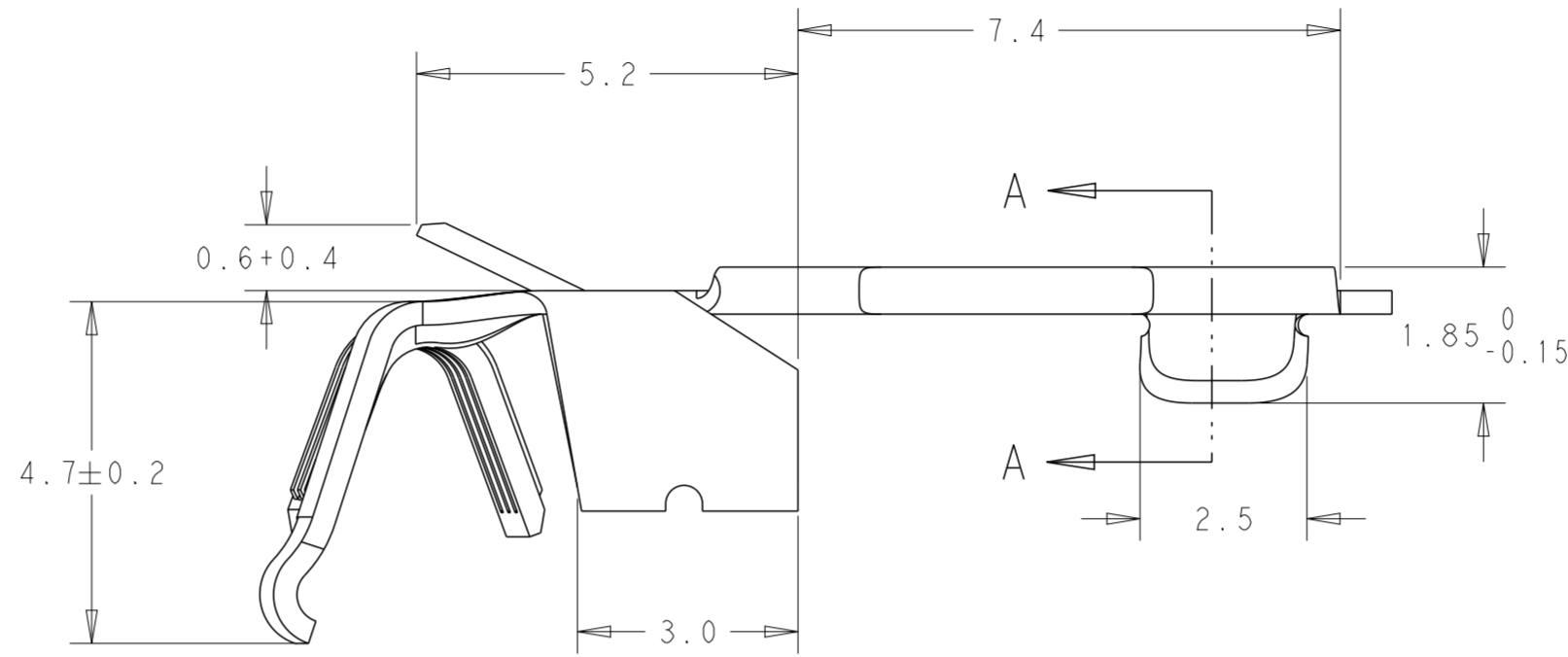
REVISIONS				
P	LTR	DESCRIPTION	DATE	APVD
C		REVISED PER ECR-16-003937	07APR2016	JP



SECTION A-A



SECTION B-B



1 TESTED ACCORDING VDE-PM906 VDE 0627/PM 906
 DIN EN 61984 (VDE 0627):2009-11;
 (IEC-COR. :2011 ZU IEC 61984:2008)

SUITABLE FOR WIRE CROSS SECTION (DGB) 0.5-1.0mm (AWG 20-17)
 AND INSULATION DIA 1.76 TO 2.5mm
 PCB THICKNESS 1.3 TO 1.7mm INCLUDING GALVANIC TIN 2µm
 WIRE BRUSH LENGTH TO BE 0.3mm MAX

TIN	CuSn4 F56	926917-1
PLATING	MATERIAL	PART NO.

THIS DRAWING IS A CONTROLLED DOCUMENT.		DWN BASVESH WARAD 21MAR2016	TE Connectivity	
DIMENSIONS: mm		CHK POTERJOY, JOSH 21MAR2016		
TOLERANCES UNLESS OTHERWISE SPECIFIED:		APVD POTERJOY, JOSH 21MAR2016	NAME MT-EDGE-CRIMP-CONTACT 5mm	
0 PLC ± 1 PLC ± 2 PLC ±0.15 3 PLC ± 4 PLC ± ANGLES ±0.5° FINISH -		PRODUCT SPEC -	SIZE A2	RESTRICTED TO -
MATERIAL -		APPLICATION SPEC -	CAGE CODE -	DRAWING NO C-926917
-		WEIGHT -	SCALE 8:1	SHEET 1 OF 1
-		CUSTOMER DRAWING	REV C	