



Chipsmall Limited consists of a professional team with an average of over 10 year of expertise in the distribution of electronic components. Based in Hongkong, we have already established firm and mutual-benefit business relationships with customers from,Europe,America and south Asia,supplying obsolete and hard-to-find components to meet their specific needs.

With the principle of “Quality Parts,Customers Priority,Honest Operation,and Considerate Service”,our business mainly focus on the distribution of electronic components. Line cards we deal with include Microchip,ALPS,ROHM,Xilinx,Pulse,ON,Everlight and Freescale. Main products comprise IC,Modules,Potentiometer,IC Socket,Relay,Connector.Our parts cover such applications as commercial,industrial, and automotives areas.

We are looking forward to setting up business relationship with you and hope to provide you with the best service and solution. Let us make a better world for our industry!



Contact us

Tel: +86-755-8981 8866 Fax: +86-755-8427 6832

Email & Skype: info@chipsmall.com Web: www.chipsmall.com

Address: A1208, Overseas Decoration Building, #122 Zhenhua RD., Futian, Shenzhen, China



PRODUCT NO.
92790

PRODUCT NO. *92790-XXX	STAND OFF DIM "M"(mm)	LONG HDR (UPPER DECK)			LONG HDR (LOWER DECK)			HDR COLOR	SHEET NO.	MOUNTING STYLE TO PCB
		HDR+GUIDE 92794-XXX	GUIDE 92791-XXX	HDR 92140-XXX	HDR+GUIDE 92789-XXX	GUIDE 92791-XXX	HDR 92140-XXX			
000	0	000	001	005	000	001	000	BLACK	NO.2	
000LF	0	000LF	001	005LF	000LF	001	000LF			
020	2	020	001	045	020	021	040	BLACK	NO.3	
020LF	2	020LF	001	045LF	020LF	021	040LF			
500	0	500	001	505	500	001	500	NATURAL	NO.4	
500LF	0	500LF	001	505LF	500LF	001	500LF			
520	2	520	001	545	520	021	540	NATURAL	NO.5	
520LF	2	520LF	001	545LF	520LF	021	540LF			

* 92790-X X X XX

- LEAD FREE OPTION
- HDR SOLDER TAIL
- STAND OFF HEIGHT (DIM"MM")
- MOUNT STYLE TO PCB

NONE : NO
LF : YES (SEE NOTE3)

0 : R/A

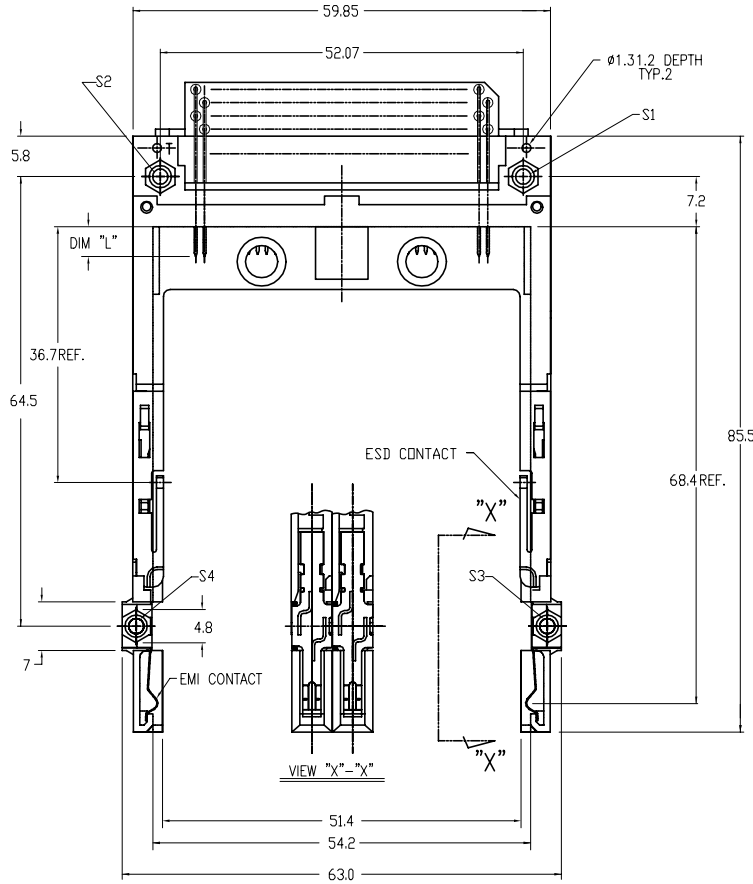
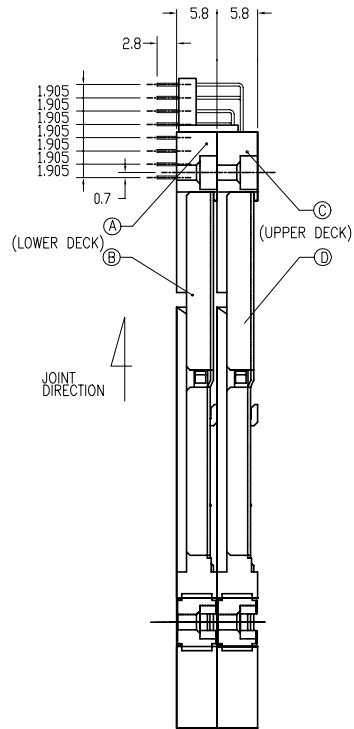
0 : 0mm(NONE)
2 : 2mm

0 : TOP MOUNT
5 : BOTTOM MOUNT

NOTE
1.THIS PRODUCT MEETS EUROPEAN UNION DIRECTIVES AND OTHER COUNTRY REGULATIONS AS DESCRIBED IN GS-22-008.
2.PRODUCT SPEC: 110-263

mat'l. code		surface <input checked="" type="checkbox"/> ISD1302		tolerance <input checked="" type="checkbox"/> ISO406 <input checked="" type="checkbox"/> ISO1101		projection		product family PCMCIA	
l trechn nodr		date		tolerances unless otherwise specified		MM		title	
A	J30018	N.T	01/19/93	angle	0.X±0.3	scale:2:1		68P DOUBLE LONG HEADER	
B	50085	M.K	04/14/95	0°±2'	0.XX±0.13			FOR TYPE I/II/III(WITH EMI CLIP)	
C	EX-N-007951	ZK	11/01/11		0.XXX±0.05			dwg no	
D	EX-N-011431	ZK	04/23/12	dr	M.Hasegawa	06/16/05	sheet 1 of 5		size
				engr	M.Hasegawa	06/16/05	FCI		92790
				chr			type		Product Customer Drawing
				appd					
sheet index	revision	D	D	D	D	D			
	sheet	1	2	3	4	5			

PRODUCT NO.	FINISH(PIN)
92790-000	SEE NOTE 3-1
92790-000LF	SEE NOTE 3-2



NOTE

- ASSY PROCESS
 - TO MOUNT PART ②, ③, ④ ON PWB WITH SCREW (S1,S2) AND SOLDER.
 - TO JOINT PART ②, ④ INTO PART ②, ③ THEN FIX PART ②, ④ WITH 2 SCREWS(S3,S4).

② MATERIAL

- PART ②, ④ (HEADER ASSY)
 - PLASTIC : HIGH TEMPERATURE THERMOPLASTIC UL94V-0 BLACK
 - PIN : COPPER ALLOY

- PART ③, ⑤ (GUIDE ASSY)
 - PLASTIC : HIGH TEMPERATURE THERMOPLASTIC UL94V-0 BLACK
 - PLATE : STAINLESS
 - EMI CONTACT : PHOSPHOR BRONZE

③ -1 FINISH(PIN)

- UNDER PLATING : 0.5 um MIN.Ni
- CONTACT AREA : 0.076 um MIN. GOLD
- SOLDER TAIL : 2.5 um MIN. Sn-Pb

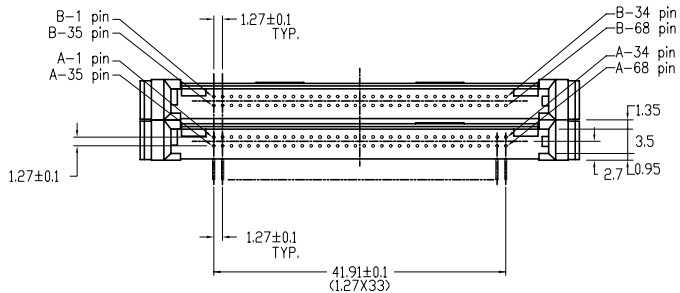
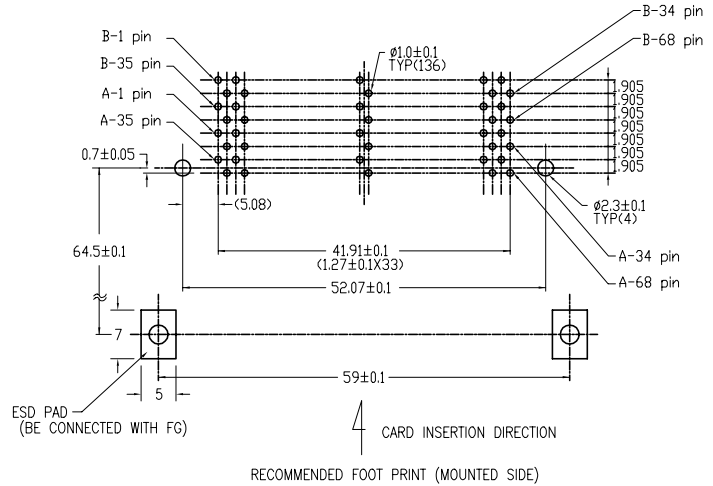
-2 FINISH(PIN) (FOR-XXXLF)

- UNDER PLATING : 0.5 um MIN.Ni
- CONTACT AREA : 0.076 um MIN. GOLD
- SOLDER TAIL : 2.5 um MIN. Sn

4.	DIM "L"	4.25±0.1	3.5±0.1	5.0±0.1
	PIN NUMBER	OTHERS	36.67	117.34 38.51.68

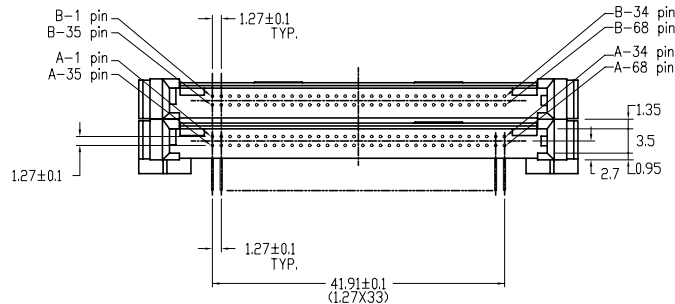
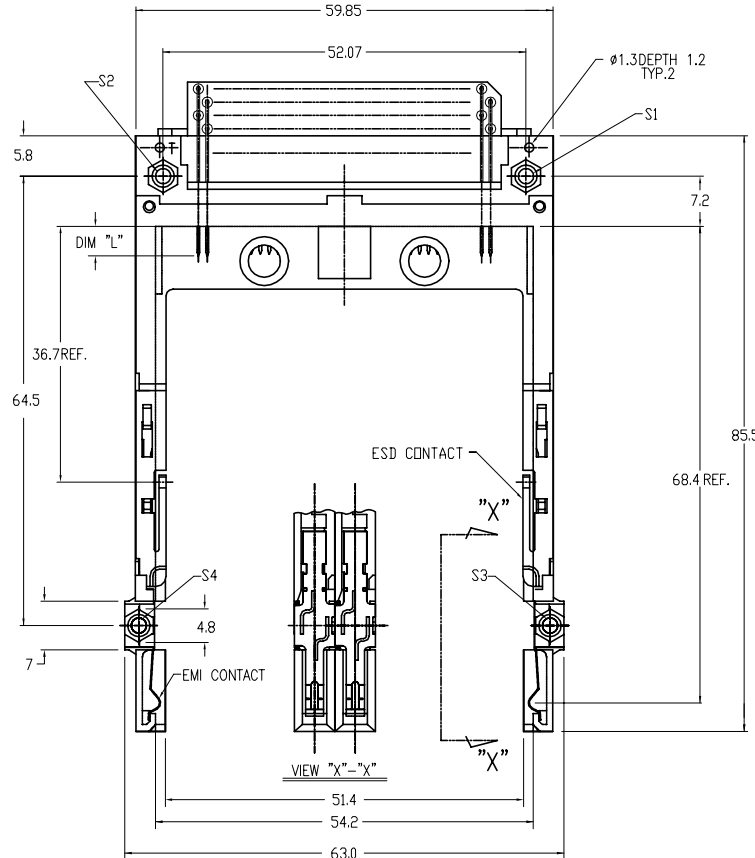
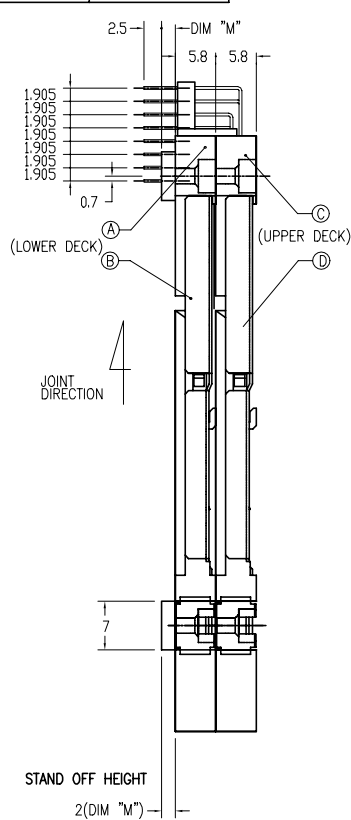
5. GENERAL TOLERANCE : ±0.3

6. SEE SHEET 1 REGARDING COMPONENTS.



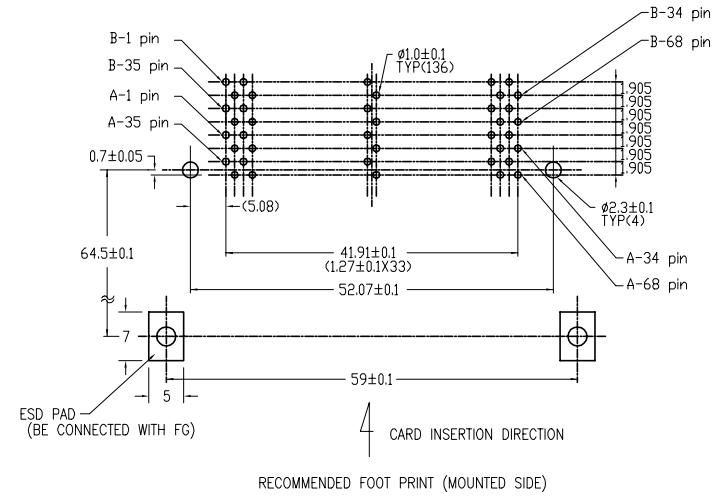
mat'l. code	surface	tolerance	projection	product family
	ISO1302	ISO406 ISO1101	MM	PCMCIA
l'recn nodr date	tolerances unless otherwise specified		scale 2:1	title
D	angle	0.X±0.3	MM	68P DOUBLE LONG HEADER
		0.XX±0.13		FOR TYPE I/II/III(WITH EMI CLIP)
	0'±2'	0.XXX±0.05		dwg no
	dr	M.Hasegawa 06/16/05		sheet 2 of 5
	enr	M.Hasegawa 06/16/05		size
	chr			A4
	appd			92790
sheet	revision			type Product Customer Drawing
index	sheet			

PRODUCT NO.	FINISH(PIN)
92790-020	SEE NOTE 3-1
92790-020LF	SEE NOTE 3-2



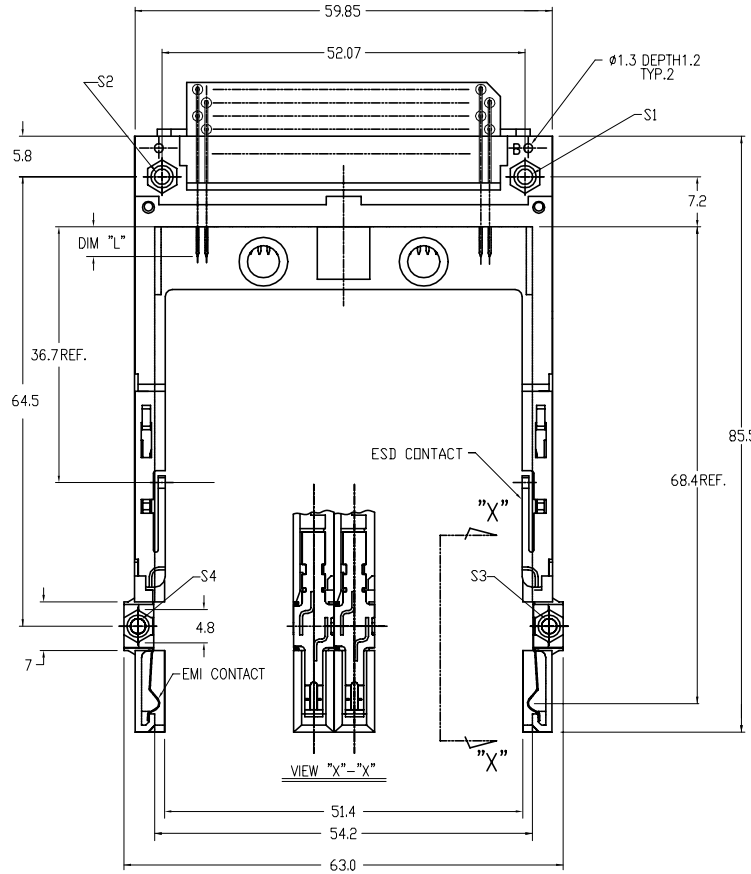
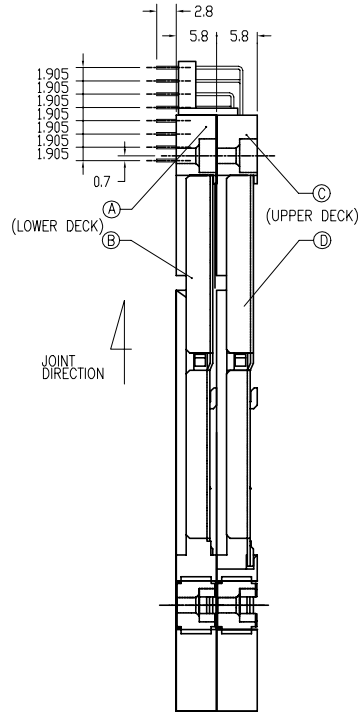
NOTE

- ASSY PROCESS
 - 1.1 TO MOUNT PART ①, ②, ③ ON PWB WITH SCREW (S1,S2) AND SOLDER.
 - 1.2 TO JOINT PART ④, ⑤ INTO PART ①, ② THEN FIX PART ③, ⑥ WITH 2 SCREWS(S3,S4).
- MATERIAL
 - 2.1 PART ①, ② (HEADER ASSY)
PLASTIC : HIGH TEMPERATURE THERMOPLASTIC UL94V-0 BLACK
PIN : COPPER ALLOY
 - 2.2 PART ③, ④ (GUIDE ASSY)
PLASTIC : HIGH TEMPERATURE THERMOPLASTIC UL94V-0 BLACK
PLATE : STAINLESS
EMI CONTACT : PHOSPHOR BRONZE
- FINISH(PIN)
 - 1 FINISH(PIN)
UNDER PLATING : 0.5 µm MIN.Ni
CONTACT AREA : 0.076 µm MIN. GOLD
SOLDER TAIL : 2.5 µm MIN. Sn-Pb
 - 2 FINISH(PIN) (FOR-XXXLF)
UNDER PLATING : 0.5 µm MIN.Ni
CONTACT AREA : 0.076 µm MIN. GOLD
SOLDER TAIL : 2.5 µm MIN. Sn
- | | | | |
|------------|----------|---------|----------------------|
| DIM "L" | 4.25±0.1 | 3.5±0.1 | 5.0±0.1 |
| PIN NUMBER | OTHERS | 36.67 | 1.17, 34, 35, 51, 68 |
- GENERAL TOLERANCE : ±0.3
- SEE SHEET 1 REGARDING COMPONENTS.

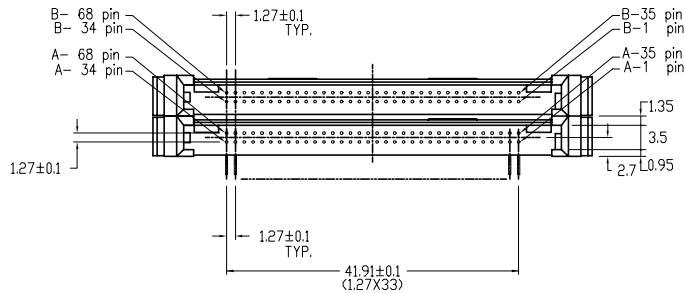


mat'l. code	surface ISO1302	tolerance ISO406 ISO1101	projection	product family PCMCIA
ltr ecn nodr date	tolerances unless otherwise specified		MM	title
D	angle	0.X±0.3	scale:2:1	68P DOUBLE LONG HEADER FOR TYPE I/II/III(WITH EMI CLIP)
	0°±2'	0.XXX±0.05		dwg no 92790 sheet 3 of 5 size A4
	dr M.Hasegawa	06/16/05	FCI	type Product Customer Drawing
	engr M.Hasegawa	06/16/05		
	chr			
sheet index	revision sheet			

PRODUCT NO.	FINISH(PIN)
92790-500	SEE NOTE 3-1
92790-500LF	SEE NOTE 3-2

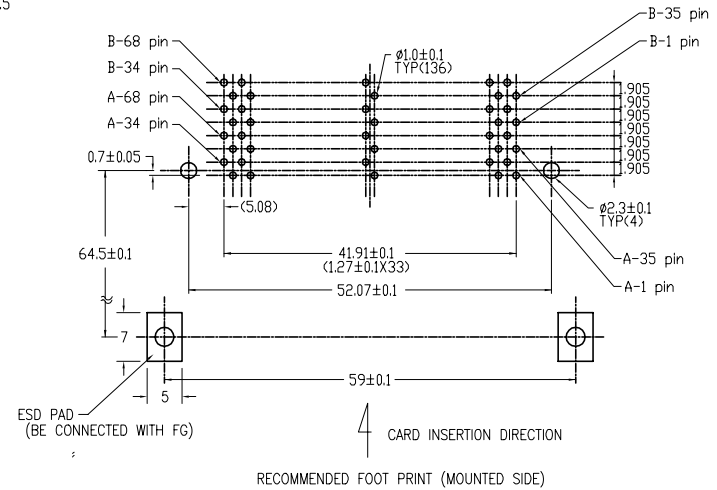


VIEW "X"-"X"



NOTE

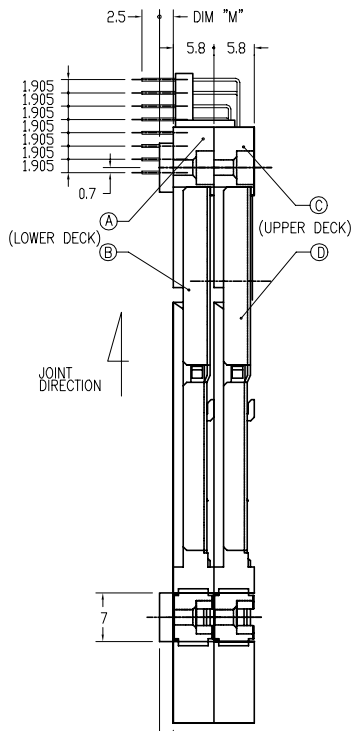
- ASSY PROCESS
 - TO MOUNT PART ④, ⑤ ON PWB WITH SCREW (S1,S2) AND SOLDER.
 - TO JOINT PART ⑥, ⑦ INTO PART ④, ⑤ THEN FIX PART ⑥, ⑦ WITH 2 SCREWS(S3,S4).
- MATERIAL
 - PART ④, ⑤ (HEADER ASSY)
 - PLASTIC : HIGH TEMPERATURE THERMOPLASTIC UL94V-0 BLACK
 - PIN : COPPER ALLOY
 - PART ⑥, ⑦ (GUIDE ASSY)
 - PLASTIC : HIGH TEMPERATURE THERMOPLASTIC UL94V-0 BLACK
 - PLATE : STAINLESS
 - EMI CONTACT : PHOSPHOR BRONZE
- FINISH(PIN)
 - FINISH(PIN)
 - UNDER PLATING : 0.5 μm MIN.Ni
 - CONTACT AREA : 0.076 μm MIN. GOLD
 - SOLDER TAIL : 2.5 μm MIN. Sn-Pb
 - FINISH(PIN) (FOR-XXXLF)
 - UNDER PLATING : 0.5 μm MIN.Ni
 - CONTACT AREA : 0.076 μm MIN. GOLD
 - SOLDER TAIL : 2.5 μm MIN. Sn
- | | | | |
|------------|----------|---------|----------------------|
| DIM "L" | 4.25±0.1 | 3.5±0.1 | 5.0±0.1 |
| PIN NUMBER | OTHERS | 36.67 | 1.17, 34, 35, 51, 88 |
- GENERAL TOLERANCE : ±0.3
- SEE SHEET 1 REGARDING COMPONENTS.



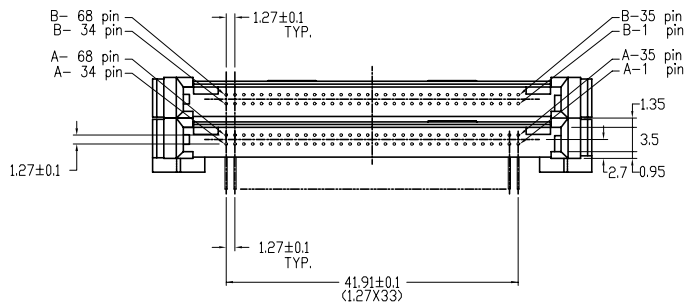
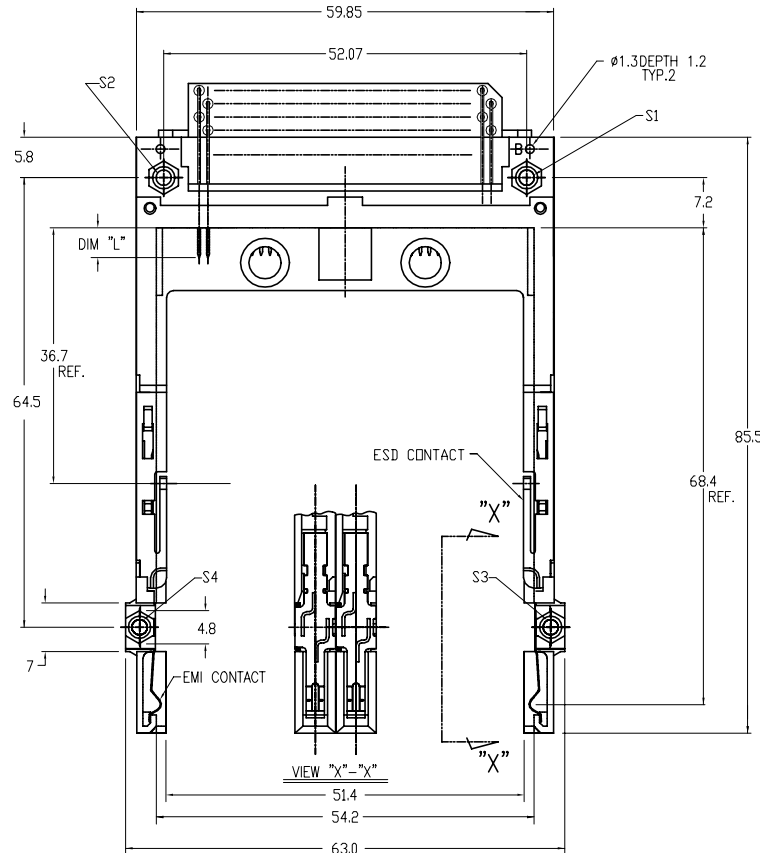
RECOMMENDED FOOT PRINT (MOUNTED SIDE)

mat'l. code	surface	tolerance	projection	product family
ISD1302	ISD406	ISD1101	PCMCIA	
ltr ecn nodr date	tolerances unless otherwise specified		scale 2:1	title
D	angle	0.X±0.3	MM	68P DOUBLE LONG HEADER
	0°±2'	0.XX±0.13		FOR TYPE I/II/III(WITH EMI CLIP)
		0.XXX±0.05		dwg no
dr	M.Hasegawa	06/16/05		sheet 4 of 5
engr	M.Hasegawa	06/16/05		size
chr				A4
appd				92790
sheet index	revision sheet			type Product Customer Drawing

PRODUCT NO.	FINISH(PIN)
92790-520	SEE NOTE 3-1
92790-520LF	SEE NOTE 3-2



STAND OFF HEIGHT
2 (DIM "M")

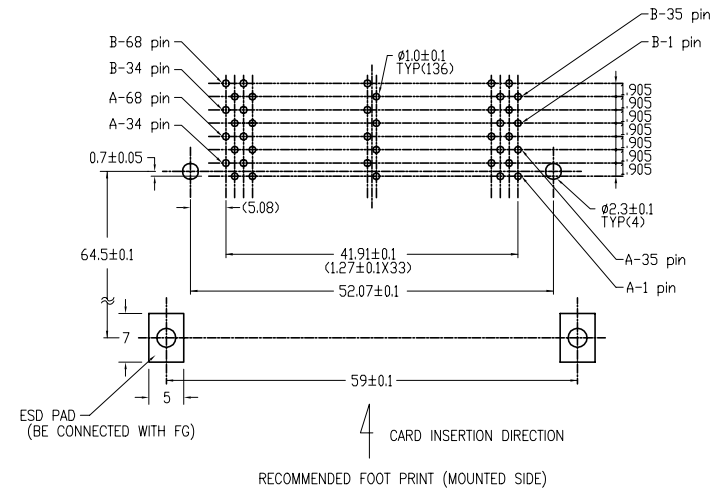


NOTE

- ASSY PROCESS
 - TO MOUNT PART (A), (C), (D) ON PWB WITH SCREW (S1,S2) AND SOLDER.
 - TO JOINT PART (B), (D) INTO PART (A), (C) THEN FIX PART B, D WITH 2 SCREWS(S3,S4).
- MATERIAL
 - PART (A), (C) (HEADER ASSY)
PLASTIC : HIGH TEMPERATURE THERMOPLASTIC UL94V-0 BLACK
PIN : COPPER ALLOY
 - PART (B), (D) (GUIDE ASSY)
PLASTIC : GUIDE HIGH TEMPERATURE THERMOPLASTIC UL94V-0 BLACK
PLATE : STAINLESS
EMI CONTACT : PHOSPHOR BRONZE
- FINISH(PIN)
 - FINISH(PIN)
UNDER PLATING : 0.5 um MIN.Ni
CONTACT AREA : 0.076 um MIN. GOLD
SOLDER TAIL : 2.5 um MIN. Sn-Pb
 - FINISH(PIN) (FOR-XXXXLF)
UNDER PLATING : 0.5 um MIN.Ni
CONTACT AREA : 0.076 um MIN. GOLD
SOLDER TAIL : 2.5 um MIN. Sn

DIM "L"	4.25±0.1	3.5±0.1	5.0±0.1
PIN NUMBER	OTHERS	36.67	1-17,34 35,51,68

- GENERAL TOLERANCE : ±0.3
- SEE SHEET 1 REGARDING COMPONENTS.



mat'l. code	surface ISO1302	tolerance ISO406 ISO1101	projection	product family PCMCIA
l/tecn nodr date	tolerances unless otherwise specified		MM	868P DOUBLE LONG HEADER FOR TYPE I/II/III(WITH EMI CLIP)
D	angle	0.X±0.3 0.XX±0.13 0°±2'	scale:2:1	dwg no 92790 sheet 5 of 5 size A4
	dr	M.Hasegawa 06/16/05	FCI	type Product Customer Drawing
	engr	M.Hasegawa 06/16/05		
	chr			
	appd			
sheet index	revision sheet			