



Chipsmall Limited consists of a professional team with an average of over 10 year of expertise in the distribution of electronic components. Based in Hongkong, we have already established firm and mutual-benefit business relationships with customers from,Europe,America and south Asia,supplying obsolete and hard-to-find components to meet their specific needs.

With the principle of “Quality Parts,Customers Priority,Honest Operation,and Considerate Service”,our business mainly focus on the distribution of electronic components. Line cards we deal with include Microchip,ALPS,ROHM,Xilinx,Pulse,ON,Everlight and Freescale. Main products comprise IC,Modules,Potentiometer,IC Socket,Relay,Connector.Our parts cover such applications as commercial,industrial, and automotives areas.

We are looking forward to setting up business relationship with you and hope to provide you with the best service and solution. Let us make a better world for our industry!



Contact us

Tel: +86-755-8981 8866 Fax: +86-755-8427 6832

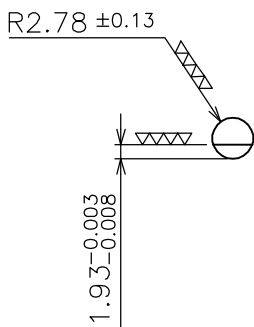
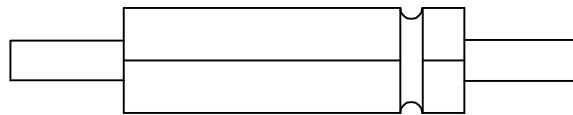
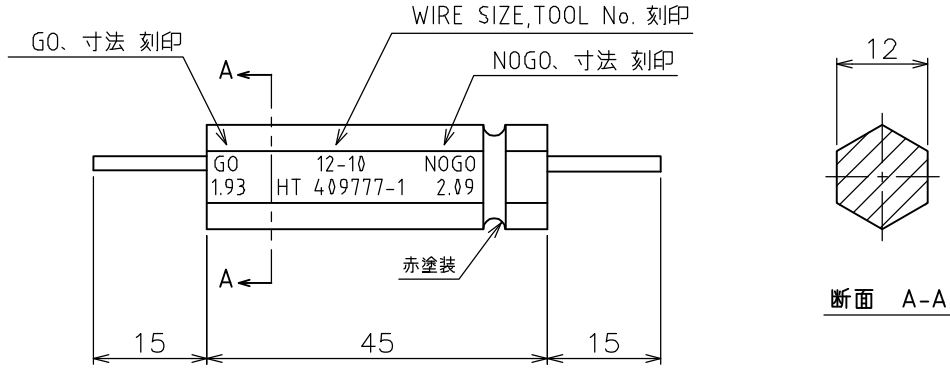
Email & Skype: info@chipsmall.com Web: www.chipsmall.com

Address: A1208, Overseas Decoration Building, #122 Zhenhua RD., Futian, Shenzhen, China

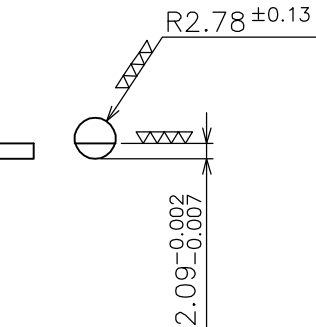
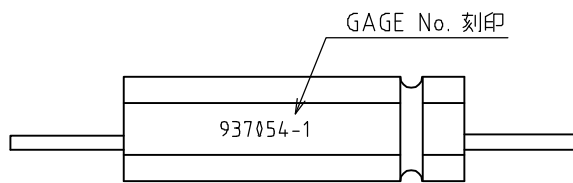


LOC J	DIST —	REVISIONS 変更			DATE	DWN	APVD
		P	LTR	DESCRIPTION			
			A	RELEASED	14JUN2006	S.N	S.Y

-1: AS SHOWN



GO



NOGO

HAND TOOL No.	WIRE SIZE	NOMINAL DIM
409777-1	12-10	1.93~2.08

THIS DRAWING IS UNPUBLISHED.

ALL RIGHTS RESERVED.

BY TYCO ELECTRONICS CORPORATION.

© COPYRIGHT

DIMENSIONS: 単位: 耗 mm	DWN	S.NAKA	14.JUN.2006	MATERIAL	材料	FINISH	仕上	—					
	CHK	S.NAKA	14.JUN.2006	Tyco Electronics AMP K.K. Kawasaki, Japan									
TOLERANCES UNLESS OTHERWISE SPECIFIED: 一般公差	APVD	S.YABE	14.JUN.2006						NAME	CUSTOMER GAGE			
	PRODUCT SPEC	製品規格		SIZE	A4	CAGE CODE	00779	DRAWING NO	番号 937054	RESTRICTED TO	—		
0 PLC ± -	APPLICATION SPEC	取付適用規格		WEIGHT	60g		SCALE	尺度	1:1	SHEET	1 OF 1	REV	A
1 PLC ± -	CUSTOMER DRAWING												
2 PLC ± -													
3 PLC ± -													
4 PLC ± -													
ANGLES ± -													

