



Chipsmall Limited consists of a professional team with an average of over 10 year of expertise in the distribution of electronic components. Based in Hongkong, we have already established firm and mutual-benefit business relationships with customers from,Europe,America and south Asia,supplying obsolete and hard-to-find components to meet their specific needs.

With the principle of “Quality Parts,Customers Priority,Honest Operation,and Considerate Service”,our business mainly focus on the distribution of electronic components. Line cards we deal with include Microchip,ALPS,ROHM,Xilinx,Pulse,ON,Everlight and Freescale. Main products comprise IC,Modules,Potentiometer,IC Socket,Relay,Connector.Our parts cover such applications as commercial,industrial, and automotives areas.

We are looking forward to setting up business relationship with you and hope to provide you with the best service and solution. Let us make a better world for our industry!



Contact us

Tel: +86-755-8981 8866 Fax: +86-755-8427 6832

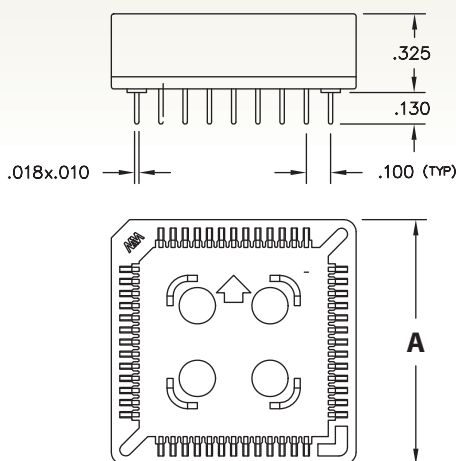
Email & Skype: info@chipsmall.com Web: www.chipsmall.com

Address: A1208, Overseas Decoration Building, #122 Zhenhua RD., Futian, Shenzhen, China

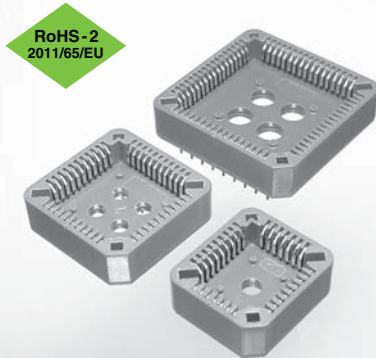


STANDARD PLCC SOCKETS

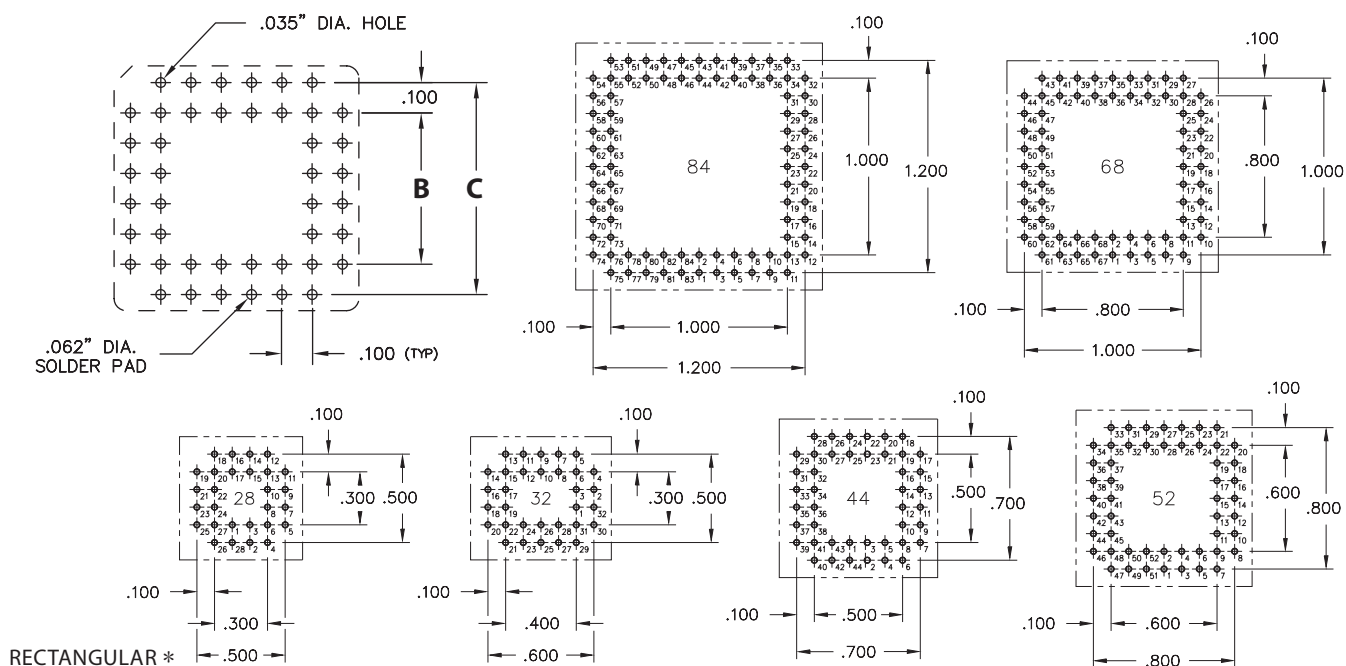
SERIES 940 • THROUGH-BOARD MOUNT



- Note: Not end stackable
- Accepts JEDEC PLCCs MS-016 & MS-018 leaded plastic substrates
- Internal standoffs insure proper positioning of chip carrier in socket
- Standoffs provide clearance for heat dissipation and cleaning
- Contacts are plated with 150 μ" tin
- Insulator material is glass reinforced PPS
- For Electrical, Mechanical and Environmental Data, see page 141 for details



PRINTED CIRCUIT DRILLING PATTERNS
(TOP VIEW)
.035" dia. min. mounting holes



Number of Contacts	Ordering Information	- A -	- B -	- C -	Quantity per Tube
20	940-44-020-24-000000	0.613	0.200	0.400	38
28	940-44-028-24-000000	0.713	0.300	0.500	33
32 *	940-44-032-24-000000 *	0.813 / .713	0.400 / .300	0.600 / .500	29
44	940-44-044-24-000000	0.913	0.500	0.700	26
52	940-44-052-24-000000	1.013	0.600	0.800	23
68	940-44-068-24-000000	1.213	0.800	1.000	19
84	940-44-084-24-000000	1.413	1.000	1.200	16
100	940-44-100-24-000000	1.603	1.200	1.400	25
Plating Code 44 ♦ = 150 μ" Sn					

