



Chipsmall Limited consists of a professional team with an average of over 10 year of expertise in the distribution of electronic components. Based in Hongkong, we have already established firm and mutual-benefit business relationships with customers from,Europe,America and south Asia,supplying obsolete and hard-to-find components to meet their specific needs.

With the principle of “Quality Parts,Customers Priority,Honest Operation,and Considerate Service”,our business mainly focus on the distribution of electronic components. Line cards we deal with include Microchip,ALPS,ROHM,Xilinx,Pulse,ON,Everlight and Freescale. Main products comprise IC,Modules,Potentiometer,IC Socket,Relay,Connector.Our parts cover such applications as commercial,industrial, and automotives areas.

We are looking forward to setting up business relationship with you and hope to provide you with the best service and solution. Let us make a better world for our industry!



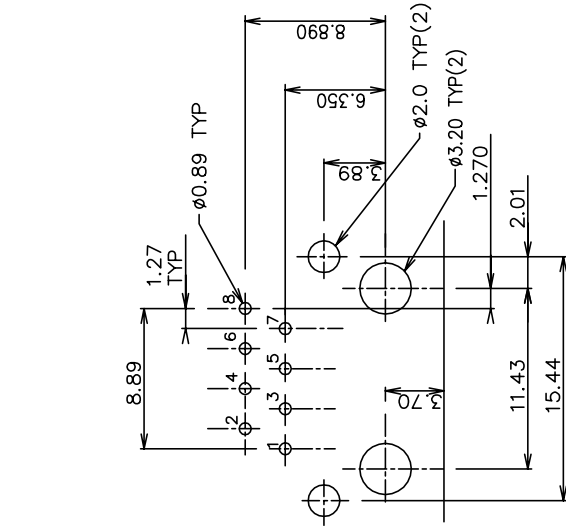
Contact us

Tel: +86-755-8981 8866 Fax: +86-755-8427 6832

Email & Skype: info@chipsmall.com Web: www.chipsmall.com

Address: A1208, Overseas Decoration Building, #122 Zhenhua RD., Futian, Shenzhen, China

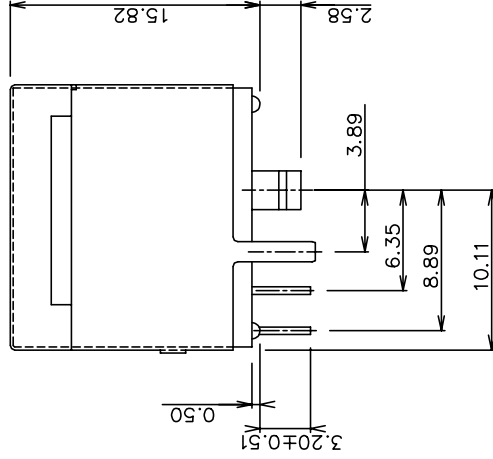
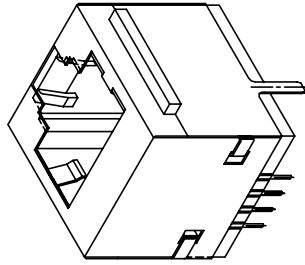
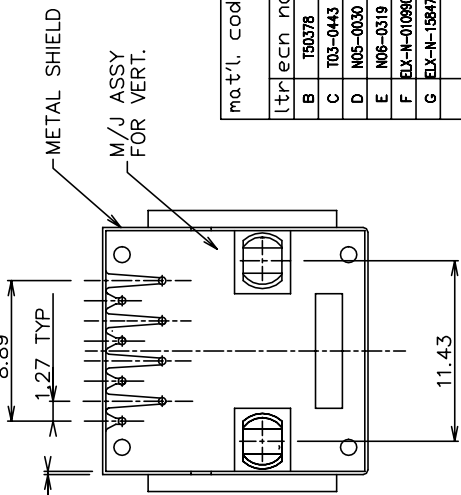
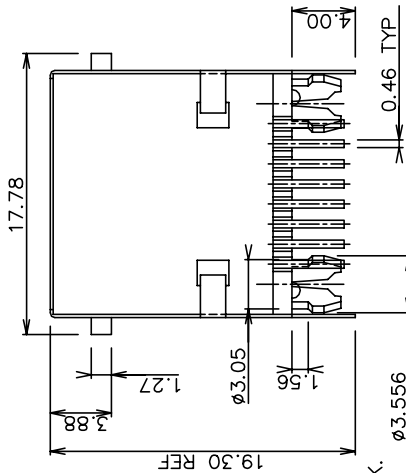
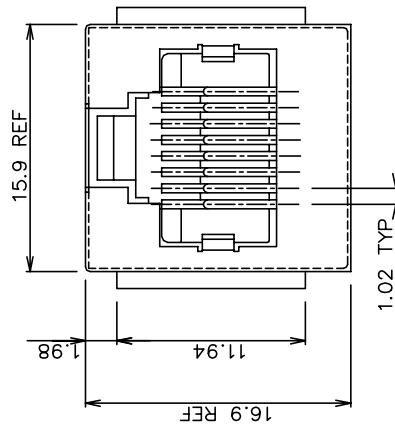




RECOMMENDED PC BOARD LAYOUT

NOTES:

1. RECOMMENDED P.C.B THICKNESS 1.60 MM
2. HOUSING MAT'L: NYLON 66, 25% G.F UL 94V-0, BLACK.
3. CONTACTS: PHOS BRONZE ALLOY UNS-C51000, ϕ 0.460 ROUND WIRE, PLATING SEE TABLE.
4. METAL SHELL MATERIAL:
COPPER ALLOY. 0.20mm THICK
FINISH:
FOR 94152-XXX TIN-LEAD 100u" THICK MIN.
FOR 94152-XXXLF PURE TIN 80u" THICK MIN.
5. PACKAGING: GES-14-351, USE TRAY
6. ALL DIMENSIONS IN MILLIMETER.
7. IF LF P/N THE PRODUCT MEETS EUROPEAN UNION DIRECTIVES AND OTHER COUNTRY REGULATIONS AS DESCRIBED IN GS-22-008.
8. THE HOUSING WILL WITHSTAND EXPOSURE TO 260°C PEAK TEMPERATURE FOR 10 SECONDS IN A WAVE SOLDER APPLICATION WITH A 1.60mm MINIMUM THICK CIRCUIT BOARD.
9. IF LF P/N PACKAGING MEETS GS-14-920 SPECIFICATION.



P/N	WIRE NUMBERS LOADED	PLATING
94152-088	ALL	5u" Au + high performance lubricant
94152-088LF	ALL	6u" GXT
94152-188LF	ALL	15u" GXT
94152-288LF	ALL	30u" GXT
94152-388LF	ALL	50u" GXT

mat'l. code	surface	tolerance	projection	product family
ISI1302	ISI1302	ISI1302	ISI1302	MOD JACK
tolerances unless otherwise specified				
B T50378	CL 12/18/95	angle 0°	mm	
C T03-043	WL 10/06/03	0.XX±0.15	scale 2.0	
D N05-0030	YS 02/05/05	0.XXX±0.05		
E N06-0319	WG 12/28/08	KCHOU		
F ELX-N-01090	SH MM 03/14/12	engr TONY CHIEN		
G ELX-N-1584	Henry 09/13/13	chr TONY CHIEN		
sheet index	revising		awg no	sheet of 1 size
1			8 POS VERT P.C.B. M/J ASSY SHIELDED	A4
			94152	
				Product Customer Drawing

sheet index	revising	date	by	checked	approved
1					