



Chipsmall Limited consists of a professional team with an average of over 10 year of expertise in the distribution of electronic components. Based in Hongkong, we have already established firm and mutual-benefit business relationships with customers from,Europe,America and south Asia,supplying obsolete and hard-to-find components to meet their specific needs.

With the principle of “Quality Parts,Customers Priority,Honest Operation,and Considerate Service”,our business mainly focus on the distribution of electronic components. Line cards we deal with include Microchip,ALPS,ROHM,Xilinx,Pulse,ON,Everlight and Freescale. Main products comprise IC,Modules,Potentiometer,IC Socket,Relay,Connector.Our parts cover such applications as commercial,industrial, and automotives areas.

We are looking forward to setting up business relationship with you and hope to provide you with the best service and solution. Let us make a better world for our industry!



Contact us

Tel: +86-755-8981 8866 Fax: +86-755-8427 6832

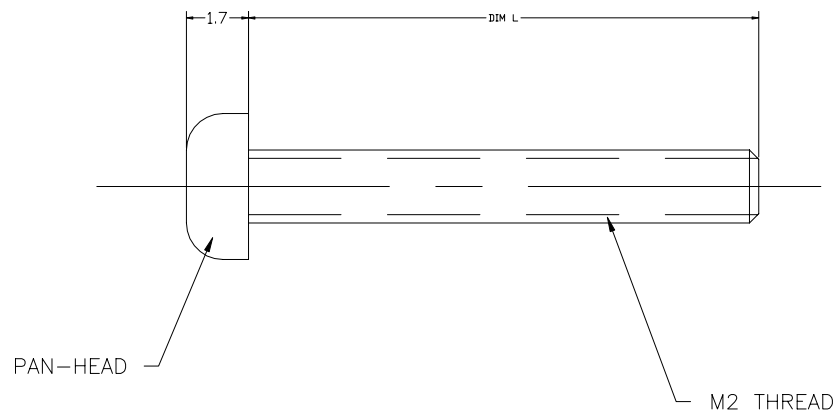
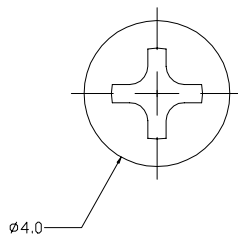
Email & Skype: info@chipsmall.com Web: www.chipsmall.com

Address: A1208, Overseas Decoration Building, #122 Zhenhua RD., Futian, Shenzhen, China





PRODUCT NO.	DIM L	APPLICATION ④	STAND-OFF HEIGHT (mm)
95121-001	6	SINGLE DECK	0
95121-002	12	SINGLE DECK DOUBLE DECK	5 0
95121-003	14	DOUBLE DECK	2, 2.2
95121-004	8	SINGLE DECK	2, 2.2
95121-005	10	SINGLE DECK	4, 4.3
95121-006	16	DOUBLE DECK	4, 4.3
95121-007	18	DOUBLE DECK	5
95121-008	20	DOUBLE DECK	6



NOTES:

- ① MATERIAL: STEEL
- 2 PLATING: NICKEL OR ZINC
- 3 PACKAGING: BAGS OF 1,000
- ④ BASED ON .062in (1.57mm) PCB THICKNESS.
- 5 USE WITH HEX NUT 92869-001
- 6 THE P/N WITH "LF" SUFFIX IS LEAD FREE PART NUMBER
- 7 IF LEAD FREE P/N.THE PRODUCT MEETS EUROPEAN UNION DIRECTIVES AND OTHER COUNTRY REGULATIONS AS DESCRIBED IN GS-22-008
- 8 LEAD FREE P/N PACKAGING MEETS GS-14-920 SPECIFICATION

mat'l. code NOTE 1				tolerances unless otherwise specified		CUSTOMER COPY		Electronics www.fciconnect.com	
ltr	ecn no	dr	date	linear	.X±.3		projection	title M2 THREADED SCREW	
D	V12164	TFG	8/17/01		.XX±.13				
E	V20092	RGD	1/15/02	angles	.XXX±.051		scale 5:1	product family MCS size dwg no A4 95121	
F	N07-0109	DT	4/26/07		0° ±2'				
sheet index		revision sheet	G 1	dr	D.SHEAFFER	11/1/94	MM	code -	
				enr	D.BRANN	11/1/94		sheet 1 of 1	
				chr	D.BRANN	11/1/94	cage code		
				appd	D.BRANN	11/1/94	STATUS: Released		