



Chipsmall Limited consists of a professional team with an average of over 10 year of expertise in the distribution of electronic components. Based in Hongkong, we have already established firm and mutual-benefit business relationships with customers from,Europe,America and south Asia,supplying obsolete and hard-to-find components to meet their specific needs.

With the principle of “Quality Parts,Customers Priority,Honest Operation,and Considerate Service”,our business mainly focus on the distribution of electronic components. Line cards we deal with include Microchip,ALPS,ROHM,Xilinx,Pulse,ON,Everlight and Freescale. Main products comprise IC,Modules,Potentiometer,IC Socket,Relay,Connector.Our parts cover such applications as commercial,industrial, and automotives areas.

We are looking forward to setting up business relationship with you and hope to provide you with the best service and solution. Let us make a better world for our industry!



Contact us

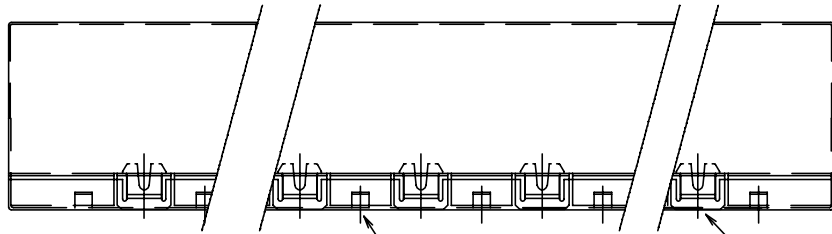
Tel: +86-755-8981 8866 Fax: +86-755-8427 6832

Email & Skype: info@chipsmall.com Web: www.chipsmall.com

Address: A1208, Overseas Decoration Building, #122 Zhenhua RD., Futian, Shenzhen, China



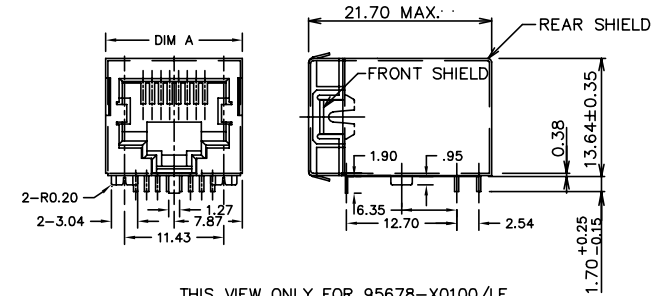
PRODUCT NO.
SEE TABLE



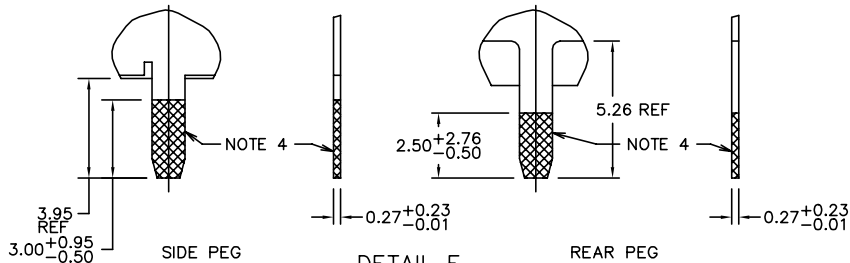
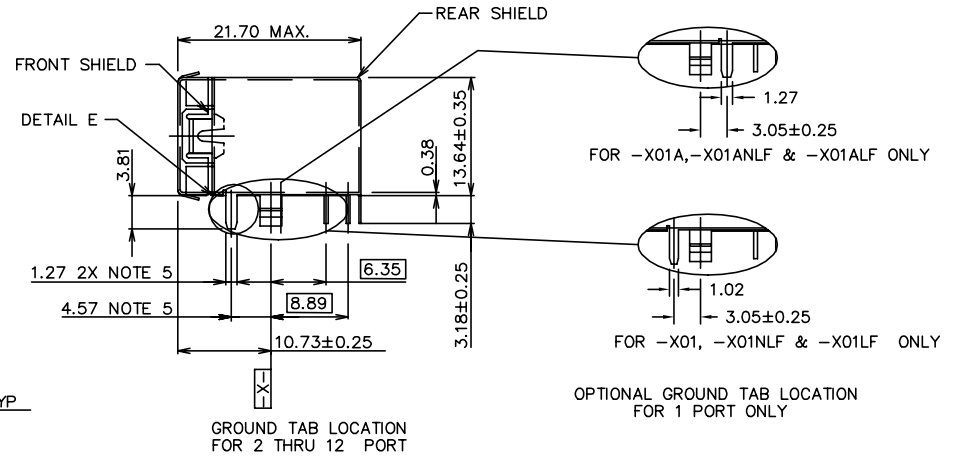
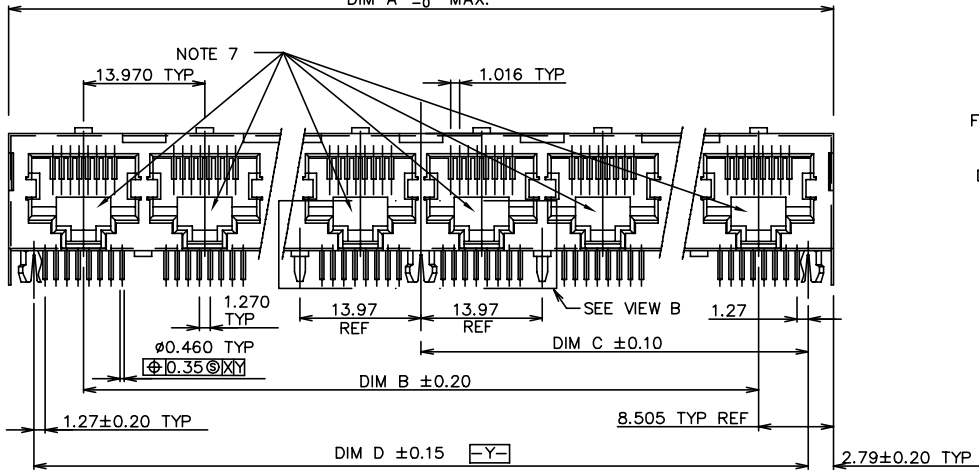
FRONT SHIELD
GROUNDING TAB

LATCHING MECHANISM

DIM A $\begin{matrix} +0.6 \\ -0 \end{matrix}$ MAX.



THIS VIEW ONLY FOR 95678-X0100/LF
WITH FRONT TONGUE
NO GROUNDING TABS AND PEGS



DETAIL E
SCALE: 3/1

mat'l. code		surface ISO 1301 ✓		tolerance ISO406 ISO1101		projection MM		product family MOD JACK	
tr ecn ndr date		angle		tolerances unless otherwise specified		scale 1.0		title	
R	ELX-N-011012	SH	03/27/12	0°	0.x±0.3	MM		R/A CAT5 GANG JACK ASSY	
J	V03-1103	PJ	10/23/03	0°	0.xx±0.13			8 POS SHIELDED SNAP PEG	
K	N04-0101	MHT	1/12/05	0°±2'	0.xxx±0.051				
L	N06-0225	LONG	8/25/06	dr	L.POTTIEGER	8/30/95		dwg no	
M	N06-0289	LONG	12/06/06	eng	Y.BELOPOLSKY	8/30/95		sheet 1 of 7	
N	N08-0100	SH	09/25/08	chr	Y.BELOPOLSKY	8/30/95		size	
P	ELX-N-007824	SH	2011-11-17	app	Y.BELOPOLSKY	8/30/95		A4	
sheet index		revision	R	R	R	R	R	type Product Customer Drawing	
		sheet	1	2	3	4	5		



PRODUCT NO	PORTS NO	DIA A ± 0.60 -0.00	DIM B	DIM C ± 0.10	DIM D ± 0.15	GROUND LEG NUMBER ON THE BACK (VIEW B)	COMMENT
95678-X01 95678-X01LF 95678-X01NLF 95678-X0100 95678-X0100LF	1	15.74	-	5.715	11.43	SEE DIAGRAM ON SHT. 3	NOTE 5
95678-X01A 95678-X01ALF 95678-X01ANLF	1	15.74	-	5.715	11.43		NOTE 5
95678-X02YZ 95678-X02YZLF 95678-X02NYZLF	2	30.98	13.97	12.700	25.40		NO TOOL
95678-X03YZ 95678-X03YZLF 95678-X03NYZLF	3	44.95	27.94	19.685	39.37		NO TOOL
95678-X04YZ 95678-X04YZLF 95678-X04NYZLF	4	58.92	41.91	26.670	53.34		
95678-X05YZ 95678-X05YZLF 95678-X05NYZLF	5	72.89	55.88	33.655	67.31		NO TOOL
95678-X06YZ 95678-X06YZLF 95678-X06NYZLF	6	86.86	69.85	40.640	81.28		NO TOOL
95678-X07YZ 95678-X07YZLF 95678-X07NYZLF	7	100.83	83.82	47.625	95.25		NO TOOL
95678-X08YZ 95678-X08YZLF 95678-X08NYZLF	8	114.80	97.79	54.610	109.22		
95678-X09YZ 95678-X09YZLF 95678-X09NYZLF	9	128.77	111.76	61.595	123.19		NO TOOL
95678-X10YZ 95678-X10YZLF 95678-X10NYZLF	10	142.74	125.73	68.580	137.16		NO TOOL
95678-X11YZ 95678-X11YZLF 95678-X11NYZLF	11	156.71	139.70	75.565	151.13		NO TOOL
95678-X12YZ 95678-X12YZLF 95678-X12NYZLF	12	170.68	153.67	82.550	165.10		NO TOOL

NOTES:

- RECOMMENDED P.C.B THICKNESS 1.60 MM.
- HOUSING MAT'L: HIGH TEMP RESIN.
- CONTACTS: PHOS BRONZE ALLOY UNS-C51000, ϕ 0.460 ROUND WIRE, PLATING SEE TABLE.
- SHIELD MAT'L: BRASS ALLOY, 0.25 MM THICK. SHIELD PLATING:
-FOR 95678-X01 THRU 95678-X12YZ BRIGHT TIN LEAD, 100u"MIN OVER NICKEL.
LEAD FREE OPTION:
-FOR 95678-X01NLF THRU 95678-X12NYZLF NICKEL, 30u"MIN WITH SELECTIVE TIN ON SOLDER TAILS. SEE DETAIL E.
-FOR 95678-X01LF THRU 95678-X12YZLF BRIGHT PURE TIN, 80u"MIN OVER NICKEL.
- SEE SIDE VIEW ON SHT. 1 FOR DETAILS.
- ALL DIMENSIONS IN MILLIMETER.
- COMPANY LOGO LOCATED IN THIS AREA.
- PART NUMBERS WITH LF IN THE END ARE LEAD FREE.
- LEAD FREE STATEMENT: THIS PRODUCT MEETS EUROPEAN UNION DIRECTIVES AN OTHER COUNTRY REGULATION AS DESCRIBED IN GS-22-008.
- THE HOUSING TEMPERATURE WITHSTAND EXPOSURE TO 260°C PEAK TEMPERATURE FOR 15 SECONDS IN A WAVE SOLDER APPLICATION WITH A 1.5 MM MINIMUM THICK CIRCUIT BOARD. SEE APPLICATION NOTES/PROCEDURES IF THEY ARE AVAILABLE.
- EQUIVALENT THICKNESS Au AND GXT PLATING HAVE SAME FUNCTION AND THEY ARE ALTERNATIVE BY THE CUSTOEMR .
- PRODUCT SPECIFICATION GS-12-083
PRODUCT PACKAGING SPECIFICATION GS-14-361

FRONT SHIELD CODE Y	
0	= STANDARD GRND. TABS
1	= NO GRND. TABS

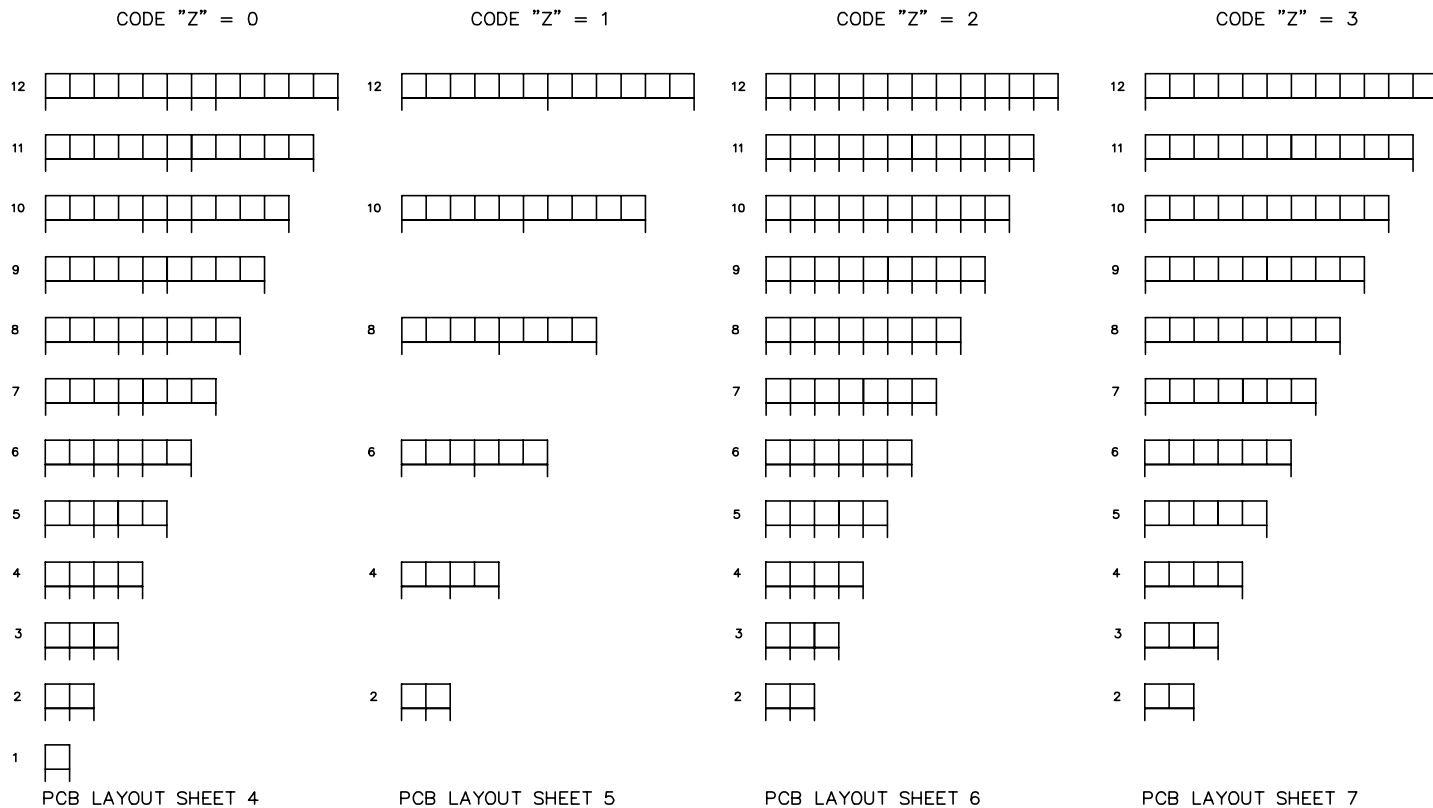
REAR SHIELD CODE Z	
0	= STANDARD GRND. LEGS
1	= 1 GRND. LEG
2	= ALL GRND. LEGS
3	= NO GRND. LEGS

PLATING CODE X	PLATING
0	5u" Au + high performance lubricant
1	15u" GOLD.
3	5u" Au + high performance lubricant
5	50u" GXT.

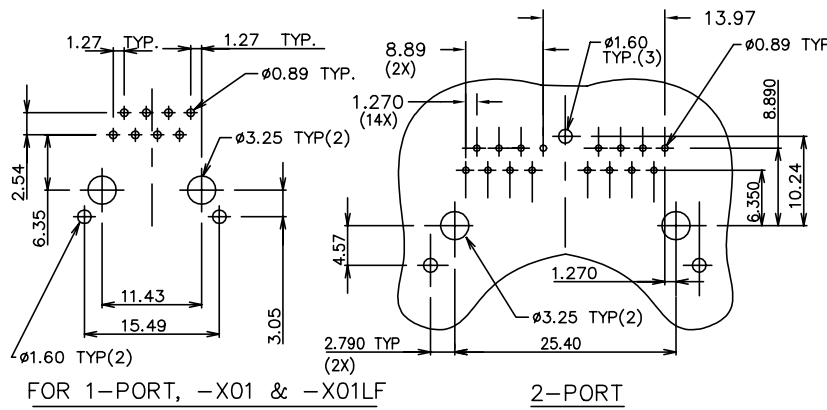
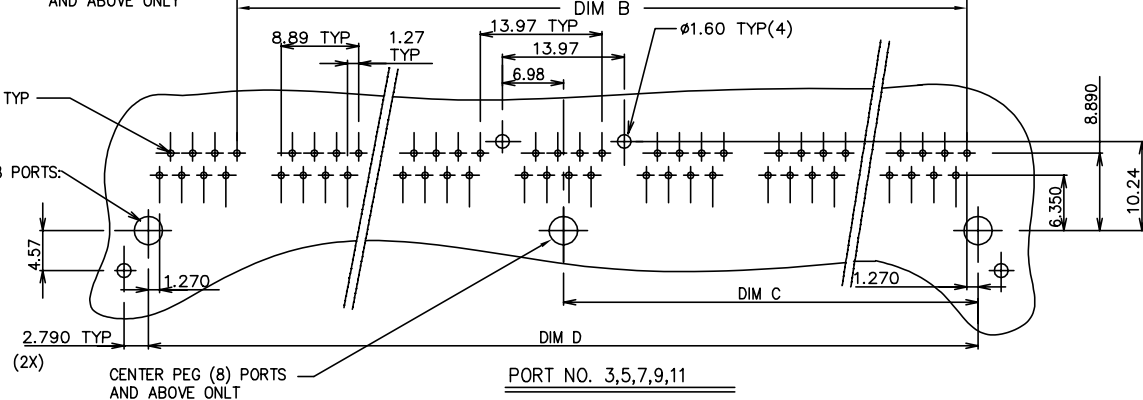
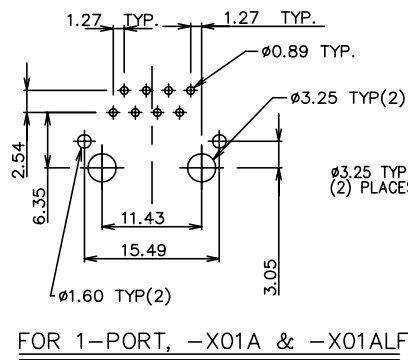
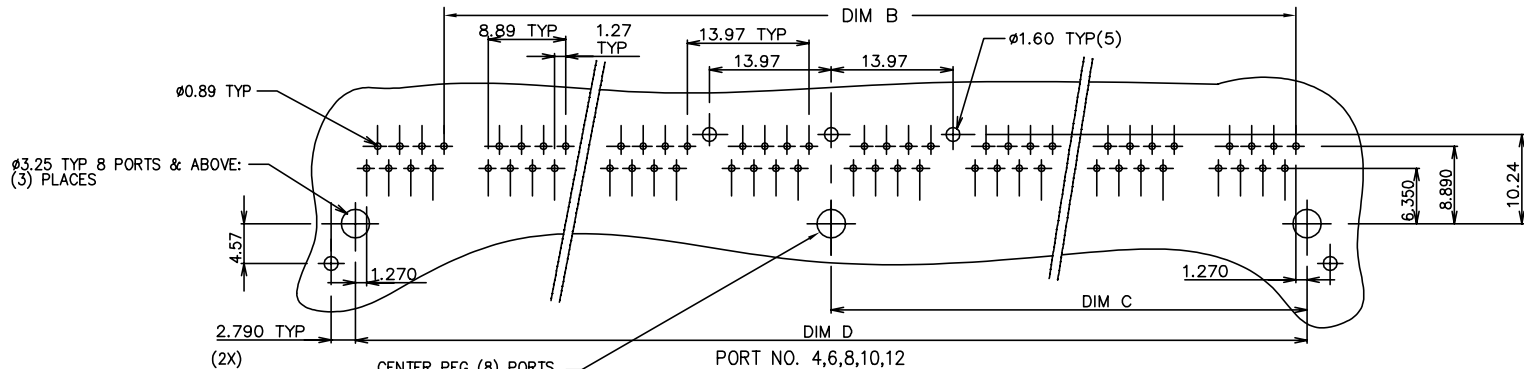
NOTE: PLEASE CHECK FOR AVAILABILITY, NOT ALL OPTIONS AVAILABLE.

mat'l. code	surface ISO 1301	tolerance ISO406 ISO1101	projection MM	product family MOD JACK
ltr ecn nodr date	tolerances unless otherw	0.x \pm 0.3 0.xx \pm 0.13 0.xxx \pm 0.051	scale 1.0	R/A CAT5 GANG JACK ASSY 8 POS SHIELDED SNAP PEG
dr L.POTTIEGER 8/30/95	eng Y.BELOPOLSKY 8/30/95	chr Y.BELOPOLSKY 8/30/95	app Y.BELOPOLSKY 8/30/95	dwg no 95678 sheet 2 of 7 size A4
sheet index	revision sheet	type Product Customer Drawing		

REAR SHIELD (VIEWED FROM PLUG ENTRY SIDE)
GROUND SOLDER TAIL CONFIGURATION

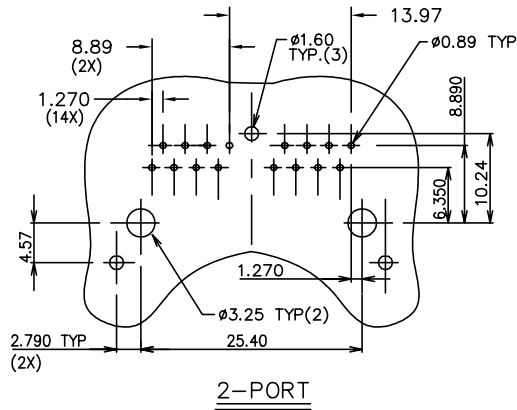
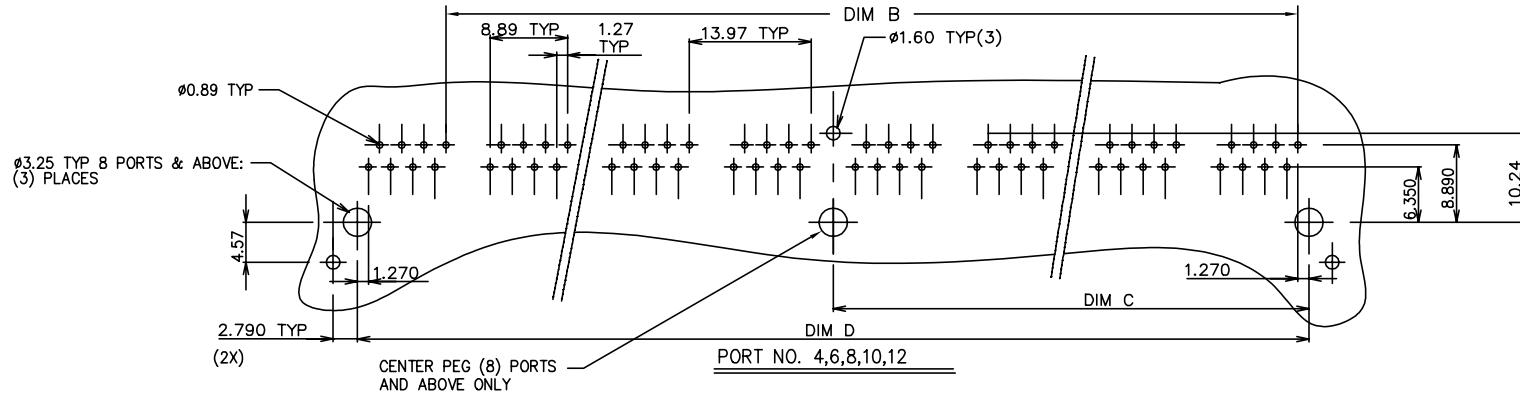


mat'l. code	surface ISO 1301	tolerance ISO 406 ISO 1101	projection 	product family MOD JACK
tr	ec	ndr	date	title
R	angle	0.x±0.3 0.xx±0.13 0'±2"	MM scale 1.0	R/A CAT5 GANG JACK ASSY 8 POS SHIELDED SNAP PEG
dr	L.POTTIEGER	8/30/95	dwg no	sheet 3 of 7
eng	Y.BELOPOLSKY	8/30/95	95678	A4
chr	Y.BELOPOLSKY	8/30/95	type	Product Customer Drawing
app	Y.BELOPOLSKY	8/30/95		
sheet index	revision sheet			



RECOMMENDED P.C.B LAYOUT
 CODE "Z" = 0 (STANDARD GROUND LEGS)

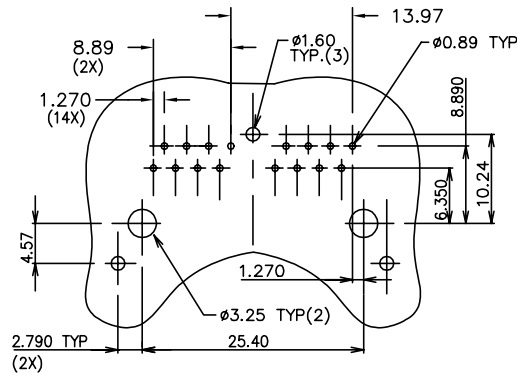
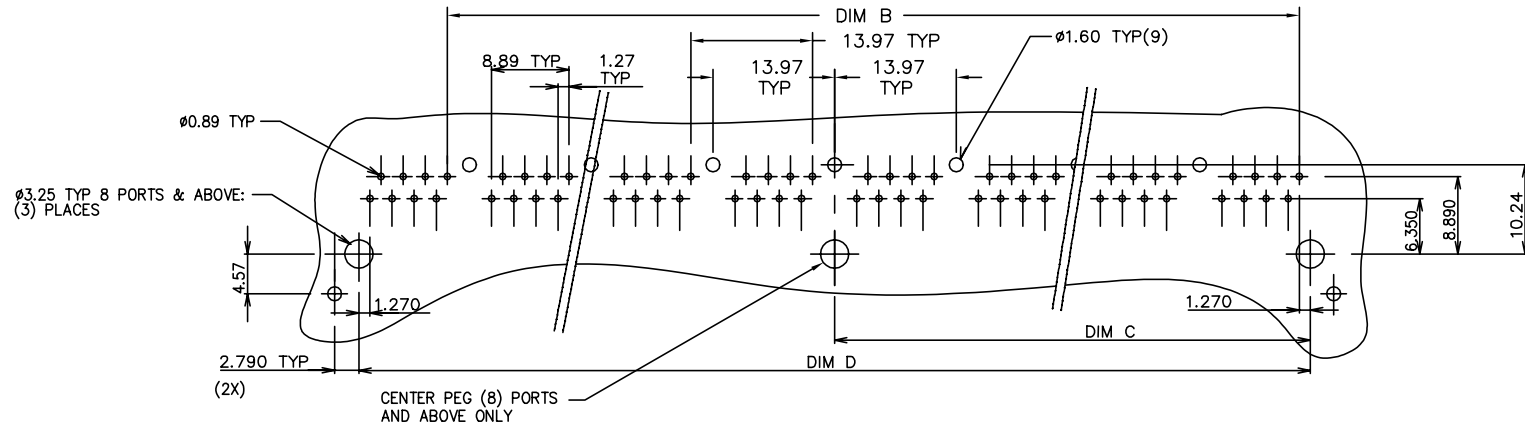
mat'l. code	surface	tolerance	projection	product family
ISO 1301	ISO 406	ISO 1101		MOD JACK
l/tecn nodr	date	tolerances unless otherwise specified	MM	R/A CAT5 GANG JACK ASSY
R		angle	MM	8 POS SHIELDED SNAP PEG
		0°±2'	scale 1.0	
	dr L.POTTIEGER	8/30/95		dwg no sheet 4 of 7 size
	eng Y.BELOPOLSKY	8/30/95		95678 A4
	chr Y.BELOPOLSKY	8/30/95		
	app Y.BELOPOLSKY	8/30/95		
sheet index	revision sheet			type Product Customer Drawing



RECOMMENDED P.C.B LAYOUT

CODE "Z" = 1 (1 GROUND LEG)

mat'l. code	surface ISO 1301	tolerance ISO406 ISO1101	projection 	product family MOD JACK
ltr ecn nodr date	tolerances unless otherwise specified			title R/A CAT5 GANG JACK ASSY 8 POS SHIELDED SNAP PEG
R	angle	0.x±0.3	MM	
	0°±2'	0.xx±0.13	scale 1.0	
	dr L.POTTIEGER	8/30/95		dwg no sheet 5 of 7 size
	eng Y.BELOPOLSKY	8/30/95		95678 A4
	chr Y.BELOPOLSKY	8/30/95		
	app Y.BELOPOLSKY	8/30/95		type Product Customer Drawing
sheet index	revision sheet			



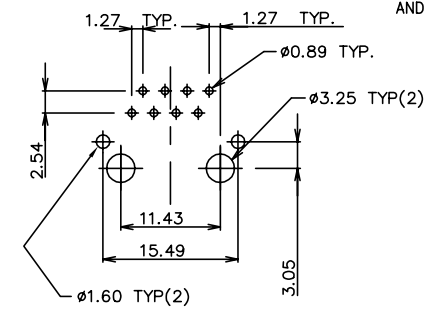
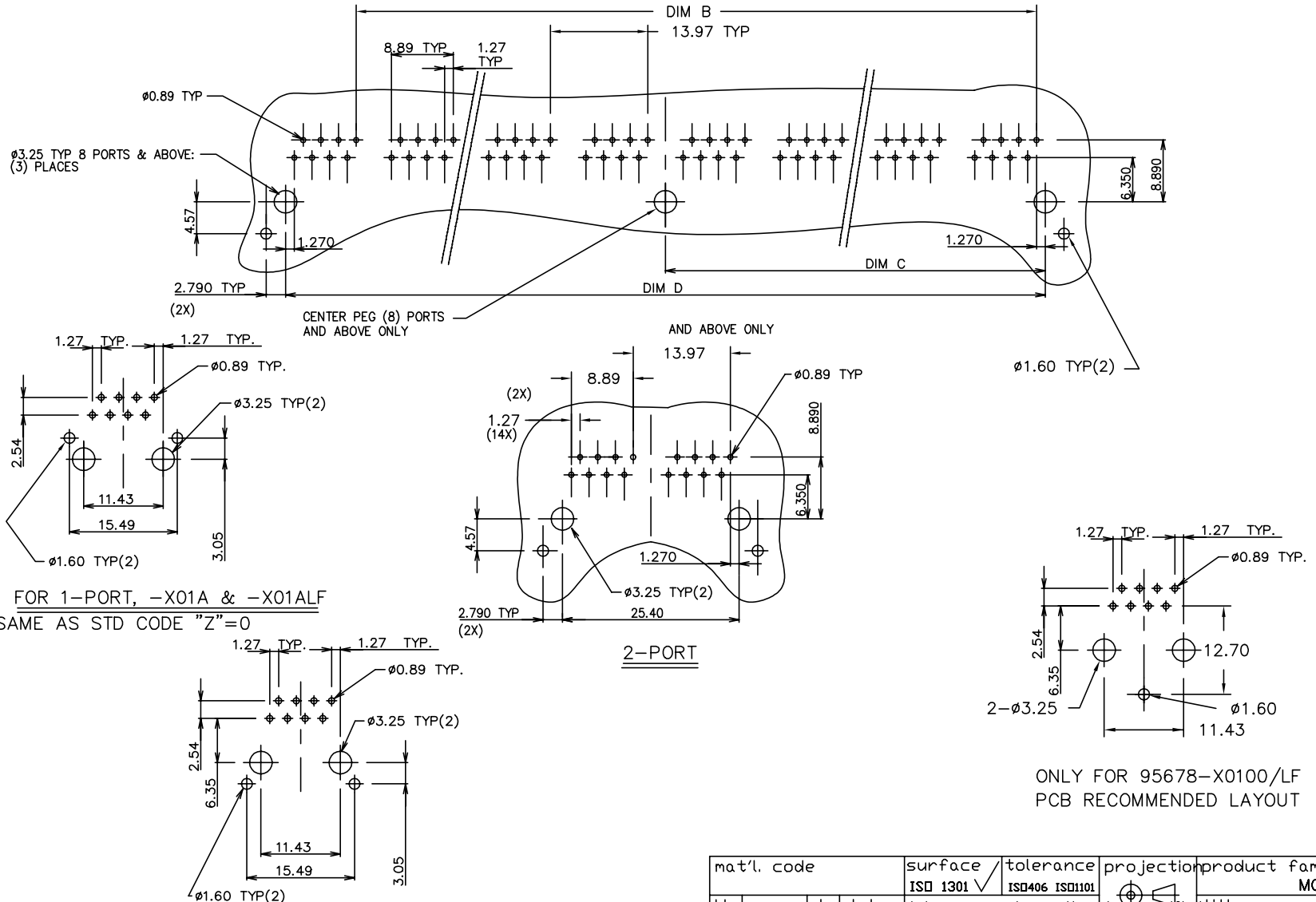
2-PORT

(SAME AS STANDARD CODE "Z"=0)

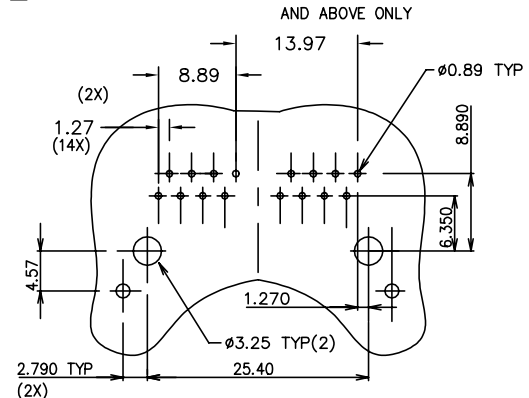
RECOMMENDED P.C.B LAYOUT

CODE "Z" = 2 (ALL GROUND LEGS)

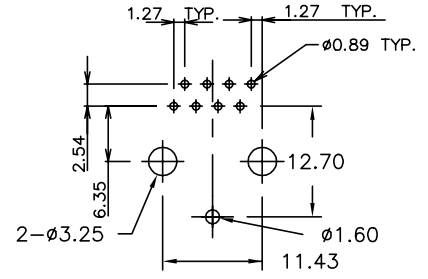
mat'l. code		surface ISO 1301 <input checked="" type="checkbox"/>		tolerance ISO406 ISO1101		projection 		product family MOD JACK	
ltr ecn nodr		date		tolerances unless otherwise specified		MM		title R/A CAT5 GANG JACK ASSY 8 POS SHIELDED SNAP PEG	
R				angle 0°±2'		scale 1.0		dwg no 95678	
				dr L.POTTIEGER 8/30/95				sheet 6 of 7	
				eng Y.BELOPOLSKY 8/30/95				size A4	
				chr Y.BELOPOLSKY 8/30/95				type Product Customer Drawing	
sheet index		revision sheet							



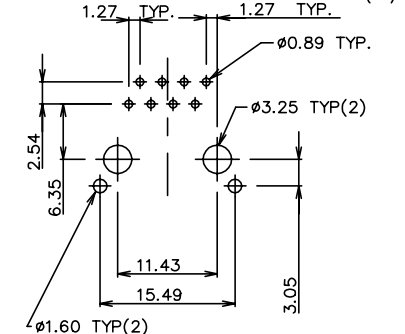
FOR 1-PORT, -X01A & -X01ALF
 SAME AS STD CODE "Z"=0



2-PORT



ONLY FOR 95678-X0100/LF
 PCB RECOMMENDED LAYOUT



FOR 1-PORT, -X01 & -X01LF
 SAME AS STD CODE "Z"=0

RECOMMENDED P.C.B LAYOUT

CODE "Z" = 3 (NO GROUND LEGS)

mat'l. code	surface ISO 1301 ✓	tolerance ISO406 ISO1101	projection 	product family MOD JACK
ltr ecn nodr	date	tolerances unless otherwise specified	MM	R/A CAT5 GANG JACK ASSY 8 POS SHIELDED SNAP PEG
R		angle 0°±2'	scale 1.0	dwg no 95678 sheet 7 of 7 size A4
		dr L.POTTIEGER 8/30/95		type Product Customer Drawing
		eng Y.BELOPOLSKY 8/30/95		
		chr Y.BELOPOLSKY 8/30/95		
		app Y.BELOPOLSKY 8/30/95		
sheet index	revision sheet			