



Chipsmall Limited consists of a professional team with an average of over 10 year of expertise in the distribution of electronic components. Based in Hongkong, we have already established firm and mutual-benefit business relationships with customers from,Europe,America and south Asia,supplying obsolete and hard-to-find components to meet their specific needs.

With the principle of "Quality Parts,Customers Priority,Honest Operation,and Considerate Service",our business mainly focus on the distribution of electronic components. Line cards we deal with include Microchip,ALPS,ROHM,Xilinx,Pulse,ON,Everlight and Freescale. Main products comprise IC,Modules,Potentiometer,IC Socket,Relay,Connector.Our parts cover such applications as commercial,industrial, and automotives areas.

We are looking forward to setting up business relationship with you and hope to provide you with the best service and solution. Let us make a better world for our industry!



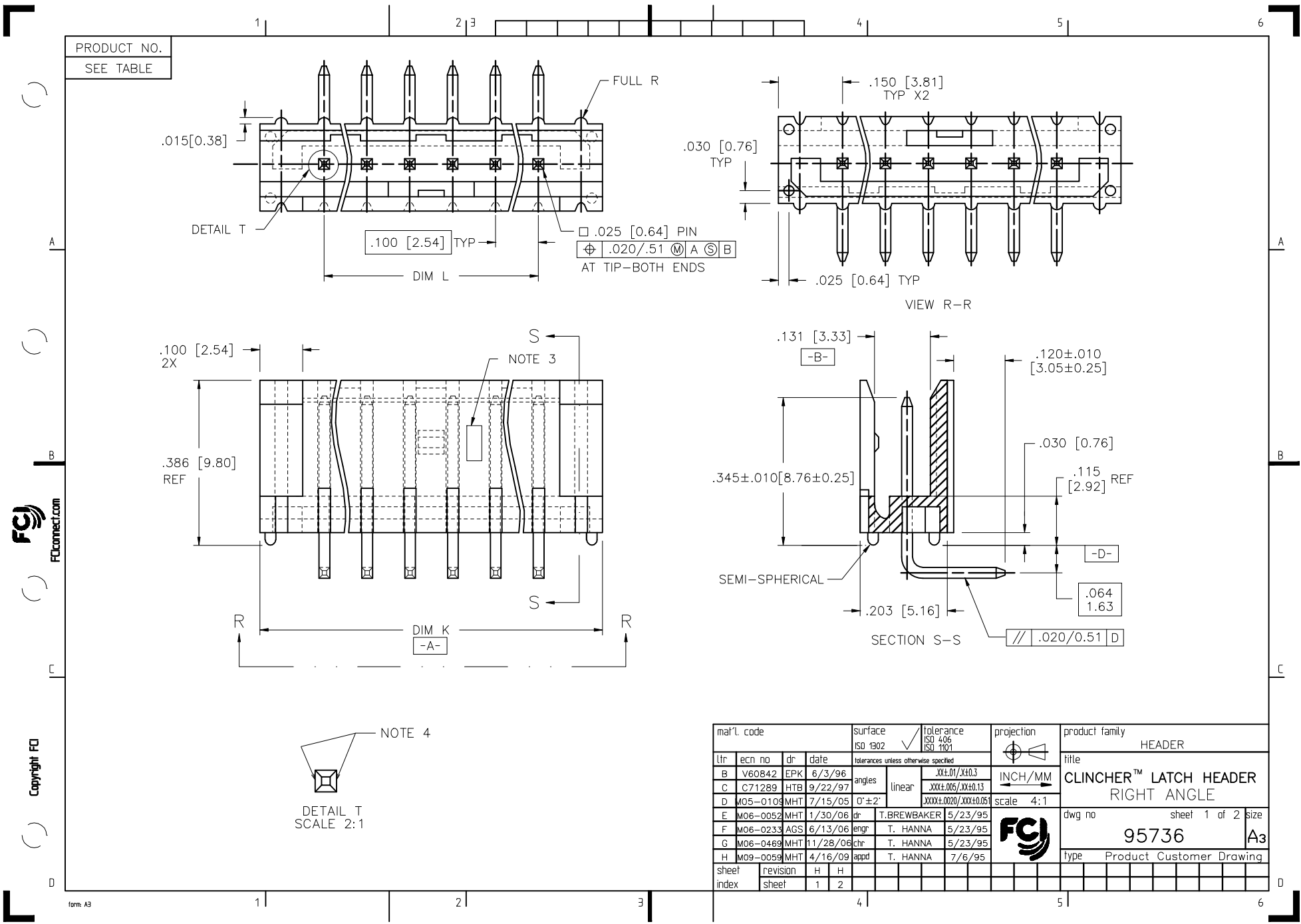
Contact us

Tel: +86-755-8981 8866 Fax: +86-755-8427 6832

Email & Skype: info@chipsmall.com Web: www.chipsmall.com

Address: A1208, Overseas Decoration Building, #122 Zhenhua RD., Futian, Shenzhen, China





mat'l. code				surface ISO 1302	tolerance ISO 406 ISO 1101	projection	product family HEADER
ltr	ecn no	dr	date	tolerances unless otherwise specified		 INCH/MM	title CLINCHER™ LATCH HEADER RIGHT ANGLE
B	V60842	EPK	6/3/96	angles	linear		
C	C71289	HTB	9/22/97			scale 4:1	dwg no 95736
D	M05-0109	MHT	7/15/05	0'±2'			
E	M06-0052	MHT	1/30/06	dr	T.BREWBAKER	5/23/95	sheet 1 of 2 size A3
F	M06-0233	AGS	6/13/06	engr	T. HANNA	5/23/95	
G	M06-0469	MHT	11/28/06	chr	T. HANNA	5/23/95	type Product Customer Drawing
H	M09-0059	MHT	4/16/09	appd	T. HANNA	7/6/95	
sheet	revision	H	H				
index	sheet	1	2				

PRODUCT NO. NOTE 5	NO. OF POSITIONS	DIM K ENGLISH	DIM K METRIC	DIM L ENGLISH	DIM L METRIC	NOTES
95736-X02	1 X 2	0.400	10.16	0.100	2.54	—
95736-X03	1 X 3	0.500	12.70	0.200	5.08	—
95736-X04	1 X 4	0.600	15.24	0.300	7.62	—
95736-X05	1 X 5	0.700	17.78	0.400	10.16	—
95736-X06	1 X 6	0.800	20.32	0.500	12.70	—
95736-X07	1 X 7	0.900	22.86	0.600	15.24	—
95736-X08	1 X 8	1.000	25.40	0.700	17.78	—
95736-X09	1 X 9	1.100	27.94	0.800	20.32	—
95736-X10	1 X 10	1.200	30.48	0.900	22.86	—
95736-X11	1 X 11	1.300	33.02	1.000	25.40	—
95736-X12	1 X 12	1.400	35.56	1.100	27.94	—
95736-X13	1 X 13	1.500	38.10	1.200	30.48	—
95736-X14	1 X 14	1.600	40.64	1.300	33.02	—
95736-X15	1 X 15	1.700	43.18	1.400	35.56	—
95736-X16	1 X 16	1.800	45.72	1.500	38.10	—

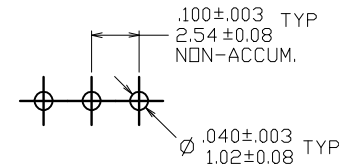
NOTE

- MOLDING MATERIAL: HIGH TEMPERATURE PLASTIC
FLAME RETARDANT PER UL-94V-0. COLOR: NATURAL
 - PIN MATERIAL: 3/4 HD PHOS. BRONZE
 - LOGO TO BE LOCATED APPROX. AS SHOWN.
 - TWO NON-CRITICAL SIDES OF PIN TIP NOT PLATED,
BOTH ENDS.
 - FOR LEAD FREE OPTION ADD "LF" IN THE END OF
THE EXISTING PART NUMBERS.
 - IF "LF" P/N THE PRODUCT MEETS EUROPEAN UNION DIRECTIVES
AND OTHER COUNTRY REGULATION AS DESCRIBED IN GS-22-008.
 - THE HOUSING WILL WITHSTAND EXPOSURE TO 260°C PEAK
TEMPERATURE FOR 20-30 SECONDS IN A CONVECTION,
INFRA-RED OR VAPOR PHASE REFLOW OVEN. SEE APPLICATION
NOTES/PROCEDURES IF THEY ARE AVAILABLE
- OR THE HOUSING WILL WITHSTAND EXPOSURE TO 260°C PEAK
TEMPERATURE FOR 15 SECONDS IN A WAVE SOLDER APPLICATION
WITH A 1.5mm MINIMUM THICK CIRCUIT BOARD. SEE APPLICATION
NOTES/PROCEDURES IF THEY ARE AVAILABLE.
- PLATING OPTIONS:
MAY BE EITHER GOLD OR GXT PLATED AT THE MANUFACTURER'S CHOICE
 - "THIS PRODUCT HAS 100% TIN PLATING IN THE INTERFACE AND
HAS NOT BEEN TESTED FOR WHISKER GROWTH IN ALL
INTERCONNECT ENVIRONMENTS."

DASH NO	OVERPLATING	UNDERPLATING
-1YY	30u"/.76u MIN (SEE NOTE 8)	50u"/1.27u MIN Ni
-1YYLF	30u"/.76u MIN (SEE NOTE 8)	50u"/1.27u MIN Ni
-4YY	100u"/2.54u MIN Sn (NOTE 9)	50u"/1.27u MIN Ni
-4YYLF	100u"/2.54u MIN Sn (NOTE 9)	50u"/1.27u MIN Ni

PRODUCT NUMBER
95736-XYLF

— LEAD FREE OPTION
— NO. OF POSITIONS
— PIN PLATING (SEE TABLE)
— BASE PART NUMBER



SCALE 3/1
RECOMMENDED HOLE PATTERN

mat'l. code				surface ISO 1302	tolerance ISO 406 ISO 1101	projection INCH/MM	product family HEADER	
ltr	ecn no	dr	date	tolerances unless otherwise specified			title CLINCHER™ LATCH HEADER RIGHT ANGLE	
H				angles	linear		.XX±.01/XX±0.3 .XXX±.006/XX±0.13 .XXX±.0020/XXX±0.05	
				0'±2'		scale 4:1	dwg no 95736	
				dr	T.BREWBAKER	5/23/95	sheet 2 of 2 size A3	
				engr	T. HANNA	5/23/95		
				chr	T. HANNA	5/23/95		
				appd	T. HANNA	7/6/95		
sheet index	revision sheet						type Product Customer Drawing	