



Chipsmall Limited consists of a professional team with an average of over 10 year of expertise in the distribution of electronic components. Based in Hongkong, we have already established firm and mutual-benefit business relationships with customers from,Europe,America and south Asia,supplying obsolete and hard-to-find components to meet their specific needs.

With the principle of “Quality Parts,Customers Priority,Honest Operation,and Considerate Service”,our business mainly focus on the distribution of electronic components. Line cards we deal with include Microchip,ALPS,ROHM,Xilinx,Pulse,ON,Everlight and Freescale. Main products comprise IC,Modules,Potentiometer,IC Socket,Relay,Connector.Our parts cover such applications as commercial,industrial, and automotives areas.

We are looking forward to setting up business relationship with you and hope to provide you with the best service and solution. Let us make a better world for our industry!



Contact us

Tel: +86-755-8981 8866 Fax: +86-755-8427 6832

Email & Skype: info@chipsmall.com Web: www.chipsmall.com

Address: A1208, Overseas Decoration Building, #122 Zhenhua RD., Futian, Shenzhen, China



SERIES 95C
6mm Square, Non-washable

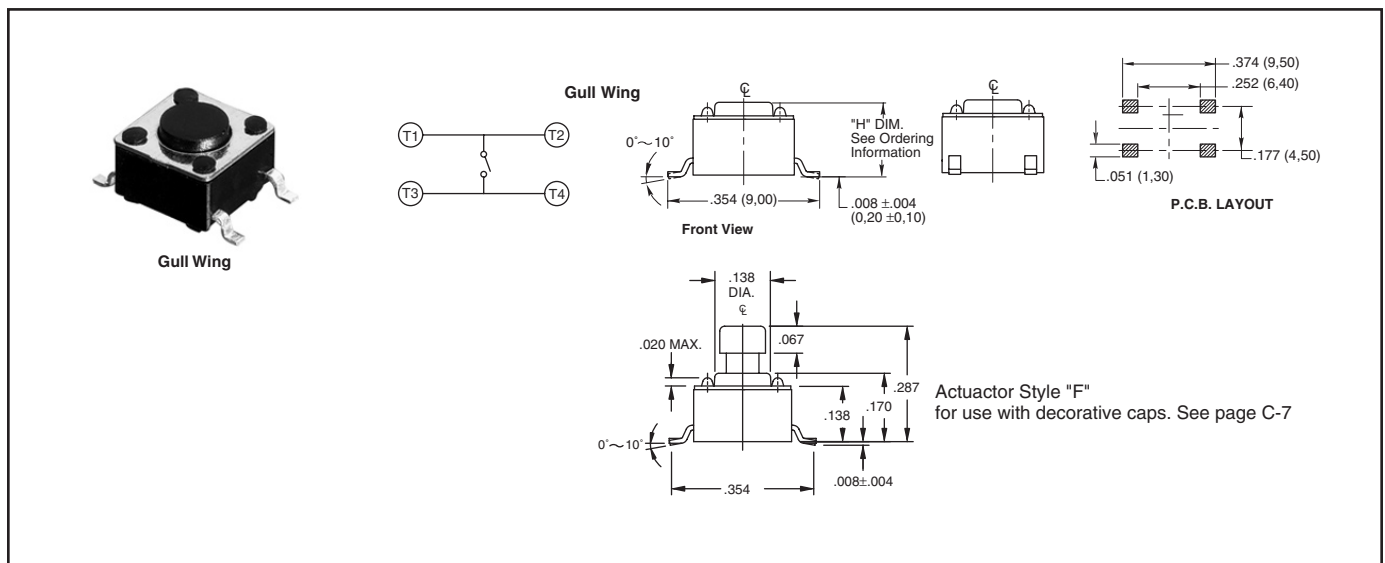
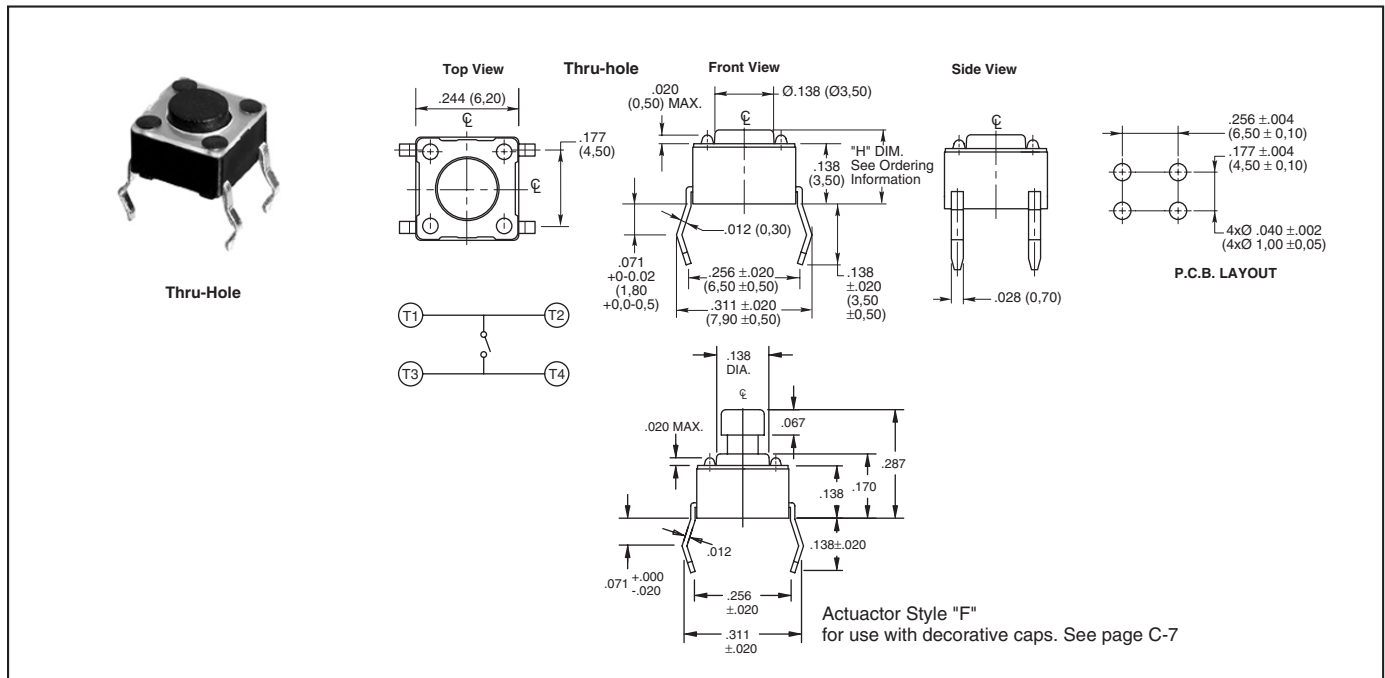
FEATURES

- Excellent Tactile Feedback
- Thru-hole, Gull Wings, and Right Angle Versions
- Surface Mount Versions Compatible with SMT Assembly Including Infrared and Vapor Phase
- Ultraminiature and Lightweight Structure Suitable for High Density Mounting

APPLICATIONS

Used in applications such as consumer electronics, audio equipment, PCs, VCRs, cable boxes, modems, communications equipment, controls, security and alarm equipment, and test and measurement equipment.

DIMENSIONS: Non-Washable Switches in inches (and millimeters)



DIMENSIONS: Non-Washable Switches in inches (and millimeters)

Right Angle

Top View

Right Angle

Side View

P.C.B. LAYOUT

Actuator Style "F" for use with caps. See page

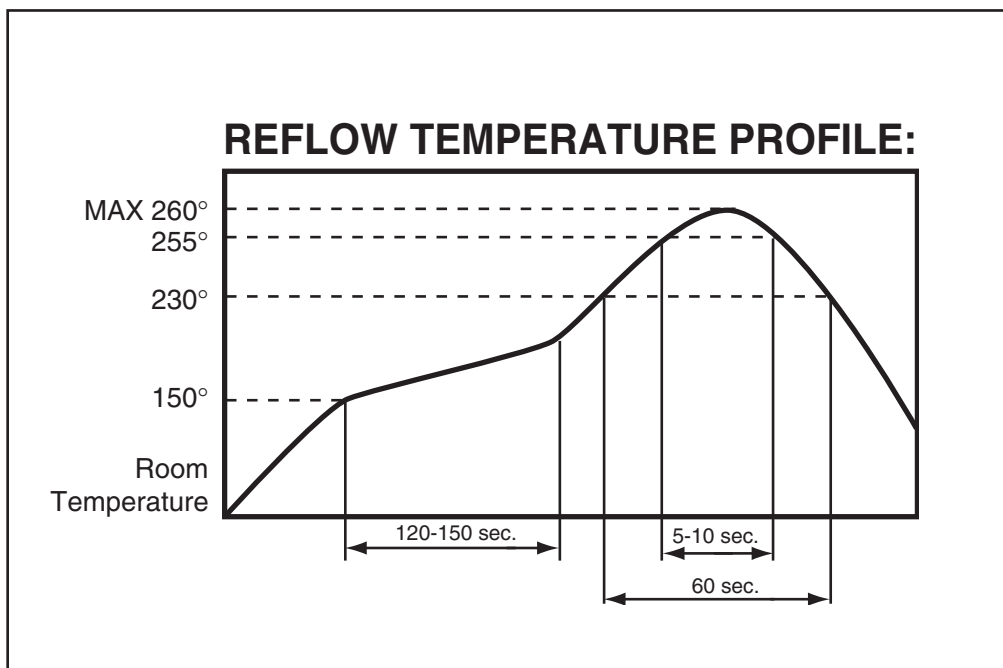
Ground Terminal

F1 **F2**

T1 **T2**

"H" DIM. See Ordering Information

Technical drawing showing dimensions in inches and millimeters for the tactile switch. Dimensions include: .012 (0,30) MAX., .291 (7,40), .177 (4,50), 276 ± .020 (7,00 ± 0,50), .335 ± .016 (8,50 ± 0,40), .016 (0,40), .028 (0,70), .138 (3,50), ±.020 (±0,50), .157 (4,00), .283 (7,20), 0.071 ± 0.00-0.020 (1.800 ± 0.00-0.50), .100 (2,55), .028 (0,70), .098 (2,50), .258 (6,55), Ø.138 (Ø3,50), .276 ± .004 (7,00 ± 0,10), 4x.039 ± .002 (4xØ1,0 ± 0,05), .098 ± .004 (2,50 ± 0,10), .177 ± .004 (4,50 ± 0,10), .095, .063, .067, .100, .124, .242, .098.



Tact Switches

ORDERING INFORMATION: Non-Washable Switches

<p>Thru-Hole and Gull Wing</p> <p>95C06A2GWRT</p>	<p>Series Size: 06 = 6mm Square Height ("H"): A = .169 (4,29), B = .197 (5,00), C = .276 (7,01), D = .374 (9,50), E = .512 (13,00) F = .287 (7,29) for use with decorative caps RoHS compliant Packaging: Blank = Tube or bulk, R = Tape and Reel (see pkg note) Terminal Style: Blank = Thru-hole, GW = Gull Wing Operating Force (Actuator Color): 2 = 100g (Black), 3 = 160g (Brown), 4 = 260g (Red), 5 = 320g (Orange), 6 = 520g (Yellow)</p>
<p>Right Angle</p> <p>95C06A2RAT</p>	<p>Series Size: 06 = 6mm Square Height ("H"): A = .124 (3,14), B = .152 (3,86), C = .230 (5,84), D = .329 (8,36), E = .467 (11,86) F = .242 (6,15) for use with decorative caps RoHS compliant Terminal Style: RA = Right Angle Operating Force (Actuator Color): 2 = 100g (Black), 3 = 160g (Brown), 4 = 260g (Red)</p>

Packaging Thru-Hole: Bulk, 1000 pcs/bag. Surface Mount: 77 pcs/tube, 1000 pcs/reel (.169" height), 900 pcs/reel (.197" height), 500 pcs/reel (.276" and .287" height), 380 pcs/reel (.374" height). Right Angle: Bulk, 1000 pcs/bag.

SPECIFICATIONS:

Non-Washable Switches

Materials

Base: UL94V-0 Nylon thermoplastic
Cover: Stainless steel, tin-plated steel
Actuator: UL94V-0 Nylon thermoplastic
Terminal: Brass with silver-plating
Contact: Stainless steel with silver-plating
Cap: Thermoplastic ABS

Electrical

Rating: 50mA, 12 Vdc
Life: 100g, 160g: 1,000,000 cycles;
 260g: 500,000 cycles
 320g, 520g, 300,000 cycles
Actuator Travel: .010" + .008"/ - .004"
Contact Resistance: 100 mΩ max.
Insulation Resistance: 100 MΩ min. at 500Vdc

Dielectric Strength: No dielectric breakdown after 250V for one minute

Contact Arrangement: single pole, single throw

Environmental

Operating Temp. Range: -25 to 70°C
Storage Temp. Range: -30 to 80°C
Mechanical Shock: MIL-STD-202F, Method 213B, Test Condition A. Gravity: 50G's (peak value), 11 msec. Direction and times: 6 sides and 3 times in each direction. High reliability.
Vibration: MIL-STD-202F, Method 201A. Passed 6 hours (2 hours in each) of three perpendicular planes at a cycle of 10-55-10Hz/minute. High reliability.

Soldering Process

Hand Soldering: Use a soldering iron of 30 watts, controlled at 350°C for 5 seconds maximum while applying solder.

Reflow Soldering (surface mount versions only): Peak temperature 260°C (500°F).

Wave Soldering: 260°C (500°F) maximum for 5 seconds subject to PCB .063 in. (1,6mm) thickness.

Available from your local Grayhill Component Distributor.

For prices and discounts, contact a local Sales Office, an authorized local distributor, or Grayhill.

DECORATIVE CAPS (for use with "F" style square actuators)

<p>6mm SQUARE</p> <p>figure 1</p>	<p>6mm ROUND</p> <p>figure 2</p>	<table border="1"> <thead> <tr> <th>PART NUMBER</th> <th>SWITCH SIZE</th> <th>SHAPE</th> <th>COLOR</th> <th>FIGURE</th> </tr> </thead> <tbody> <tr><td>95CAP-000</td><td>6mm</td><td>SQUARE</td><td>YELLOW</td><td>1</td></tr> <tr><td>95CAP-001</td><td>6mm</td><td>SQUARE</td><td>BLUE</td><td>1</td></tr> <tr><td>95CAP-002</td><td>6mm</td><td>SQUARE</td><td>RED</td><td>1</td></tr> <tr><td>95CAP-003</td><td>6mm</td><td>SQUARE</td><td>NATURAL</td><td>1</td></tr> <tr><td>95CAP-004</td><td>6mm</td><td>SQUARE</td><td>BLACK</td><td>1</td></tr> <tr><td>95CAP-005</td><td>6mm</td><td>SQUARE</td><td>GREEN</td><td>1</td></tr> <tr><td>95CAP-006</td><td>6mm</td><td>SQUARE</td><td>ORANGE</td><td>1</td></tr> <tr><td>95CAP-010</td><td>6mm</td><td>ROUND</td><td>YELLOW</td><td>2</td></tr> <tr><td>95CAP-011</td><td>6mm</td><td>ROUND</td><td>BLUE</td><td>2</td></tr> <tr><td>95CAP-012</td><td>6mm</td><td>ROUND</td><td>RED</td><td>2</td></tr> <tr><td>95CAP-013</td><td>6mm</td><td>ROUND</td><td>NATURAL</td><td>2</td></tr> <tr><td>95CAP-014</td><td>6mm</td><td>ROUND</td><td>BLACK</td><td>2</td></tr> <tr><td>95CAP-015</td><td>6mm</td><td>ROUND</td><td>GREEN</td><td>2</td></tr> <tr><td>95CAP-016</td><td>6mm</td><td>ROUND</td><td>ORANGE</td><td>2</td></tr> </tbody> </table>	PART NUMBER	SWITCH SIZE	SHAPE	COLOR	FIGURE	95CAP-000	6mm	SQUARE	YELLOW	1	95CAP-001	6mm	SQUARE	BLUE	1	95CAP-002	6mm	SQUARE	RED	1	95CAP-003	6mm	SQUARE	NATURAL	1	95CAP-004	6mm	SQUARE	BLACK	1	95CAP-005	6mm	SQUARE	GREEN	1	95CAP-006	6mm	SQUARE	ORANGE	1	95CAP-010	6mm	ROUND	YELLOW	2	95CAP-011	6mm	ROUND	BLUE	2	95CAP-012	6mm	ROUND	RED	2	95CAP-013	6mm	ROUND	NATURAL	2	95CAP-014	6mm	ROUND	BLACK	2	95CAP-015	6mm	ROUND	GREEN	2	95CAP-016	6mm	ROUND	ORANGE	2
PART NUMBER	SWITCH SIZE	SHAPE	COLOR	FIGURE																																																																									
95CAP-000	6mm	SQUARE	YELLOW	1																																																																									
95CAP-001	6mm	SQUARE	BLUE	1																																																																									
95CAP-002	6mm	SQUARE	RED	1																																																																									
95CAP-003	6mm	SQUARE	NATURAL	1																																																																									
95CAP-004	6mm	SQUARE	BLACK	1																																																																									
95CAP-005	6mm	SQUARE	GREEN	1																																																																									
95CAP-006	6mm	SQUARE	ORANGE	1																																																																									
95CAP-010	6mm	ROUND	YELLOW	2																																																																									
95CAP-011	6mm	ROUND	BLUE	2																																																																									
95CAP-012	6mm	ROUND	RED	2																																																																									
95CAP-013	6mm	ROUND	NATURAL	2																																																																									
95CAP-014	6mm	ROUND	BLACK	2																																																																									
95CAP-015	6mm	ROUND	GREEN	2																																																																									
95CAP-016	6mm	ROUND	ORANGE	2																																																																									