



Chipsmall Limited consists of a professional team with an average of over 10 year of expertise in the distribution of electronic components. Based in Hongkong, we have already established firm and mutual-benefit business relationships with customers from,Europe,America and south Asia,supplying obsolete and hard-to-find components to meet their specific needs.

With the principle of “Quality Parts,Customers Priority,Honest Operation,and Considerate Service”,our business mainly focus on the distribution of electronic components. Line cards we deal with include Microchip,ALPS,ROHM,Xilinx,Pulse,ON,Everlight and Freescale. Main products comprise IC,Modules,Potentiometer,IC Socket,Relay,Connector.Our parts cover such applications as commercial,industrial, and automotives areas.

We are looking forward to setting up business relationship with you and hope to provide you with the best service and solution. Let us make a better world for our industry!



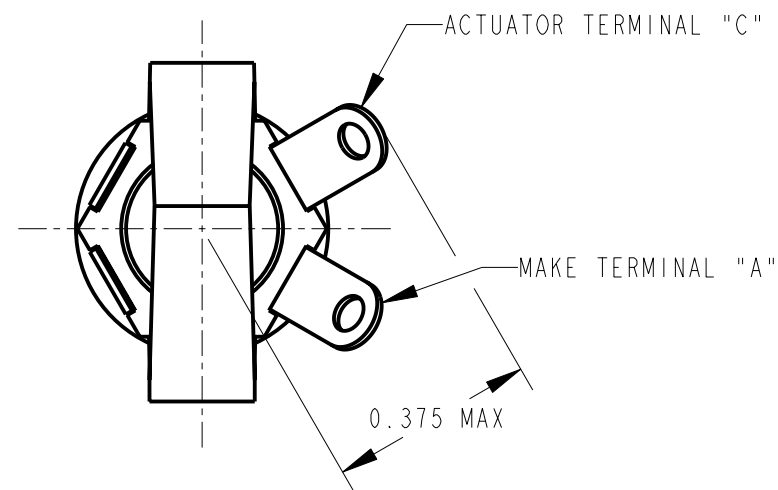
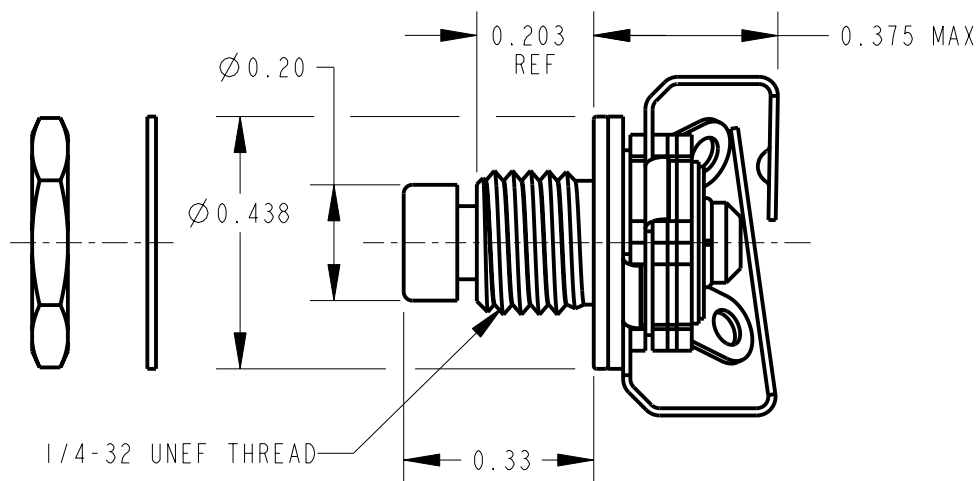
Contact us

Tel: +86-755-8981 8866 Fax: +86-755-8427 6832

Email & Skype: info@chipsmall.com Web: www.chipsmall.com

Address: A1208, Overseas Decoration Building, #122 Zhenhua RD., Futian, Shenzhen, China





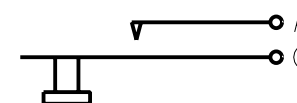
NOTES:

1. MATERIALS:

BUSHING - COPPER ALLOY, NICKEL PLATED
 INSULATING WASHERS - PHENOLIC & THERMOPLASTIC
 SPRINGS - SPECIAL COPPER ALLOY, SILVER PLATED
 BUSHING WASHER - COPPER ALLOY, NICKEL PLATED
 BUTTON - THERMOPLASTIC, SEE TABLE FOR COLOR
 BUTTON RETAINING RING - TINNED MUSIC WIRE
 HEX NUT - COPPER ALLOY, NICKEL PLATED
 WASHER - STEEL, NICKEL PLATED

2. KI63A WASHER AND KI63B HEX NUT SHIPPED UNASSEMBLED.

3. THIS PRODUCT IS RoHS COMPLIANT.



I-A CIRCUIT

PART NUMBER	BUTTON COLOR
951X	RED
961X	BLACK

CUSTOMER DRAWING



STAR SYMBOL DENOTES CRITICAL DIMENSION

THIS DRAWING DESCRIBES A DESIGN CONSIDERED PROPRIETARY IN NATURE, DEVELOPED AND MANUFACTURED BY SWITCHCRAFT INC. AND IS RELEASED ON A CONFIDENTIAL BASIS FOR IDENTIFICATION PURPOSES ONLY.

UNLESS OTHERWISE SPECIFIED

- ALL DIMENSIONS IN INCHES
 - TWO PLACE DECIMALS ± 0.01
 - THREE PLACE DECIMALS ± 0.005
 - ANGLES $\pm 1^\circ$
 - ALL DIA. CONCENTRIC WITHIN 0.005 T.I.R.

- FEATURES ON THE SAME CENTERLINE MUST BE ALIGNED WITHIN ± 0.002

- REMOVE ALL BURRS

DO NOT SCALE DRAWING

SIZE	WIDTH	MULT	LBS/M	TEMPER
FINISH	MATERIAL			
SPEC No.	SPEC No.			
FIRST USED ON		SCALE 3:1		
DATE DRAWN	BY	CHKD	APVD	Switchcraft® SHEET OF
08-Oct-13	TO	TO 10-8-13	TJK 10-8-13	
NAME I-A CIRCUIT TINI-SWITCH, RoHS				PART No. 951X_961X
				REV A

REV	ECO NUMBER	DATE	BY	APVD
A	25209	11-23-05	TO	TJK
REVISIONS				

Pro/Engineer CAD File

A