



Chipsmall Limited consists of a professional team with an average of over 10 year of expertise in the distribution of electronic components. Based in Hongkong, we have already established firm and mutual-benefit business relationships with customers from,Europe,America and south Asia,supplying obsolete and hard-to-find components to meet their specific needs.

With the principle of “Quality Parts,Customers Priority,Honest Operation,and Considerate Service”,our business mainly focus on the distribution of electronic components. Line cards we deal with include Microchip,ALPS,ROHM,Xilinx,Pulse,ON,Everlight and Freescale. Main products comprise IC,Modules,Potentiometer,IC Socket,Relay,Connector.Our parts cover such applications as commercial,industrial, and automotives areas.

We are looking forward to setting up business relationship with you and hope to provide you with the best service and solution. Let us make a better world for our industry!



## Contact us

Tel: +86-755-8981 8866 Fax: +86-755-8427 6832

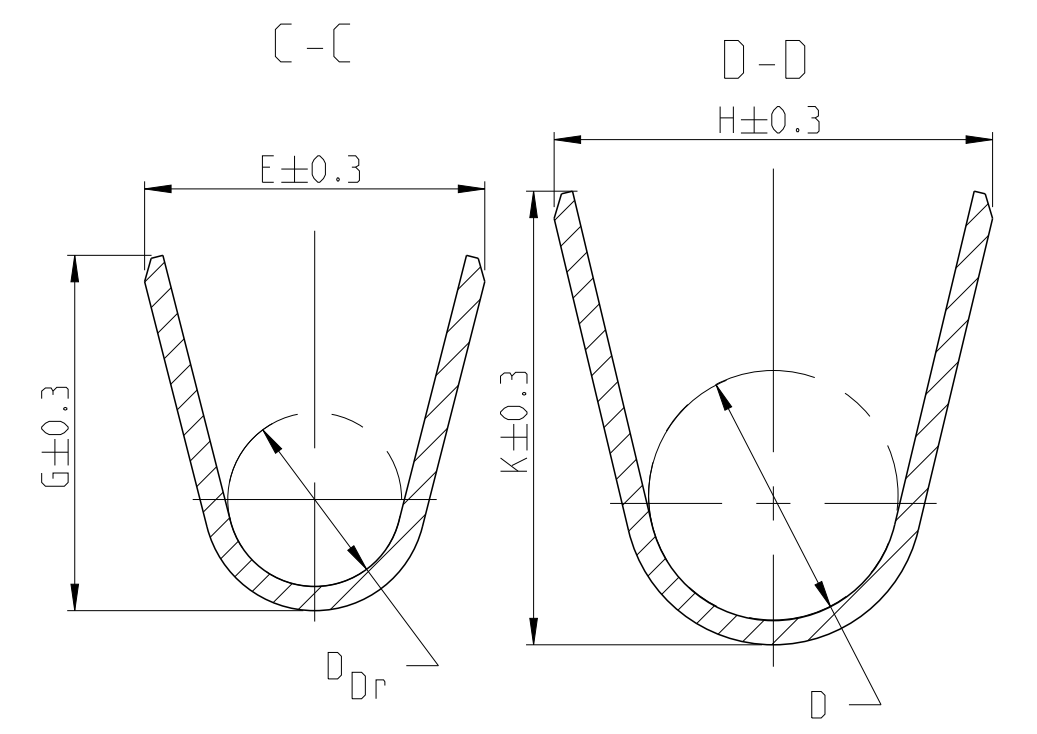
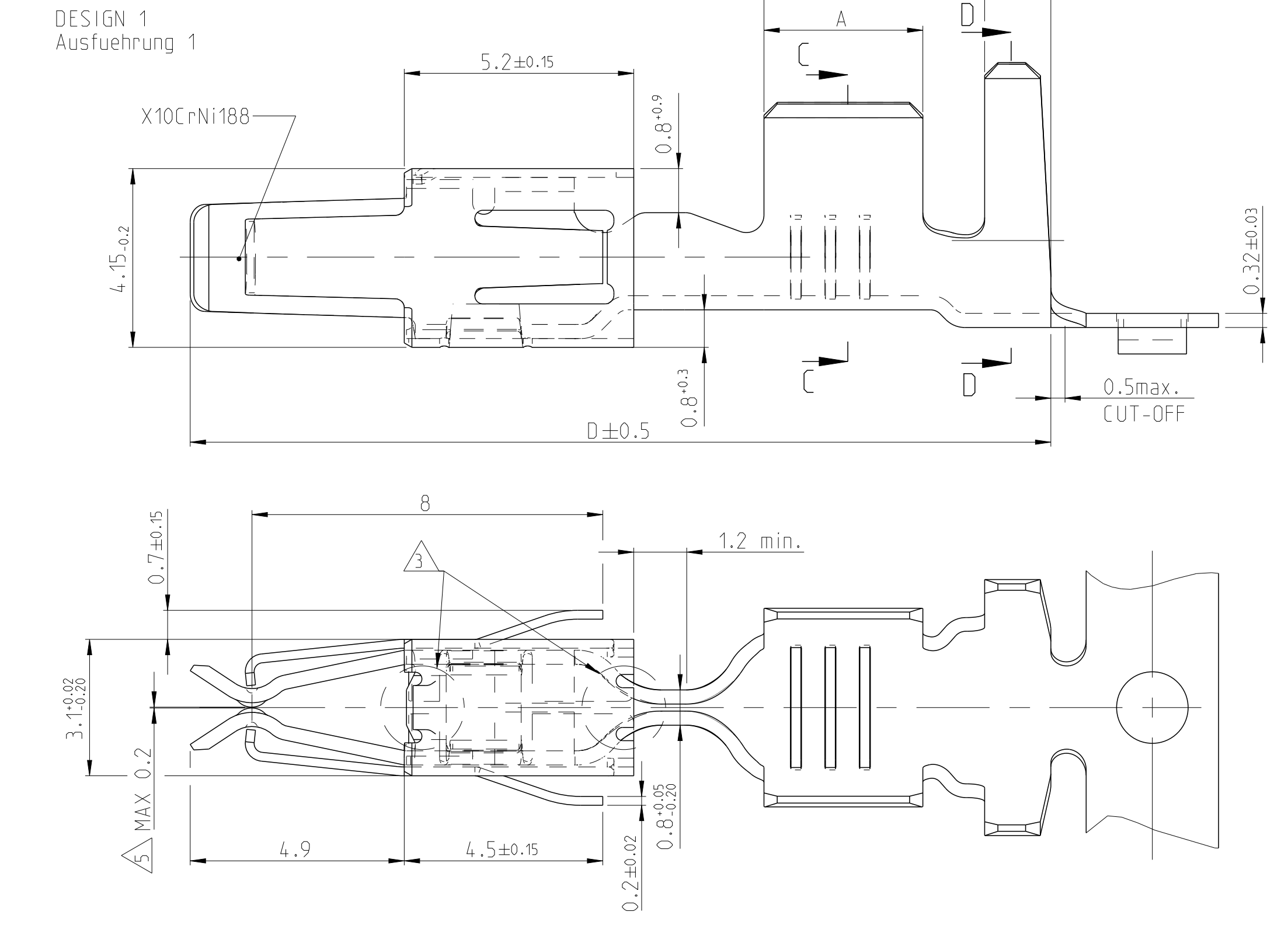
Email & Skype: info@chipsmall.com Web: www.chipsmall.com

Address: A1208, Overseas Decoration Building, #122 Zhenhua RD., Futian, Shenzhen, China



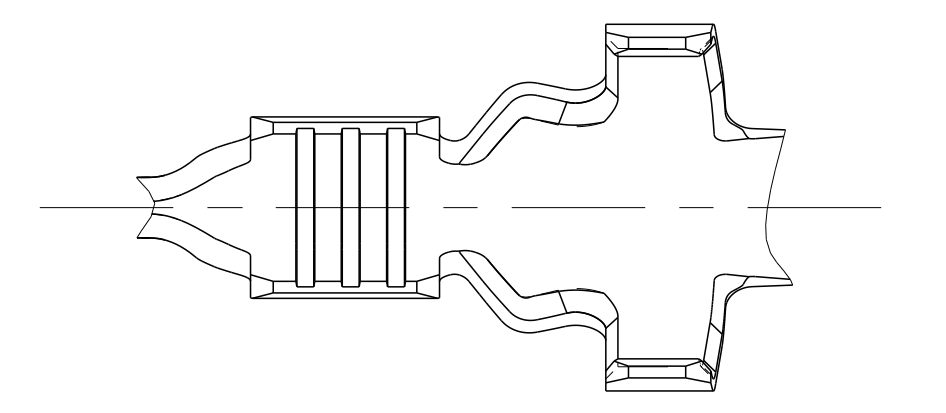
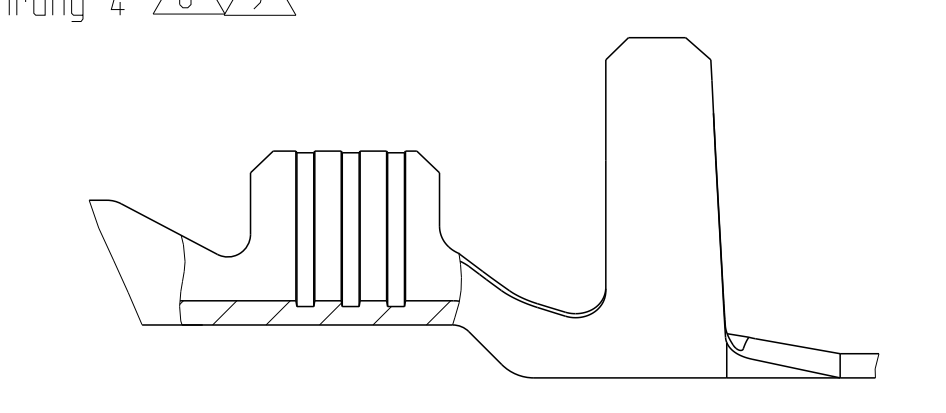
REVISIONS			
NO.	DESCRIPTION	DATE	BY
B13	NEW COLUMN "D" ADDED	06.02.2016	SMH/KJ/EGP
B14	REMOVED NOTE 7	06.02.2016	SMK/SCH
B14	ECR-15-014.318	29.02.2016	VM/SCH
B16	NOTE ON DIM MAX. 0.2 CHANGED	06.02.2016	MO/SCH

FLR-WIRE  
FLR-Leitung

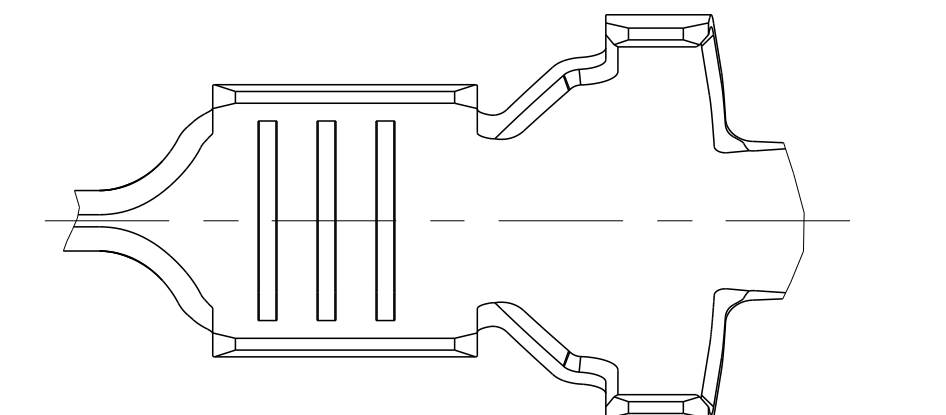
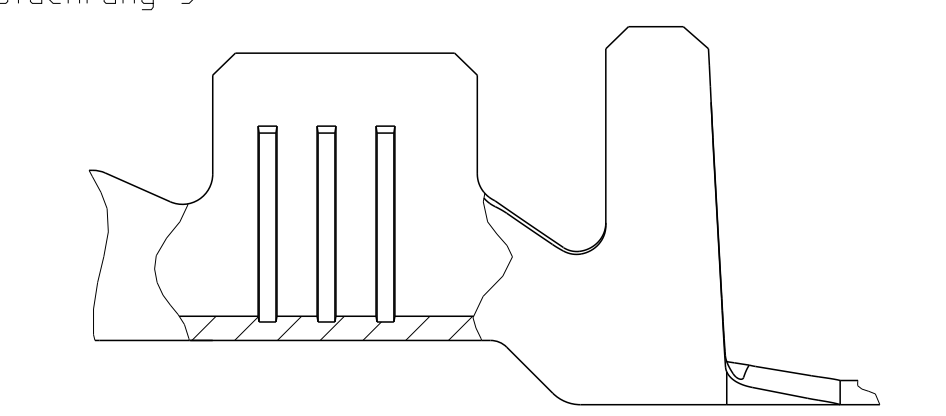


FLR- AND FLK-CABLE  
FLR- und FLK- Leitung

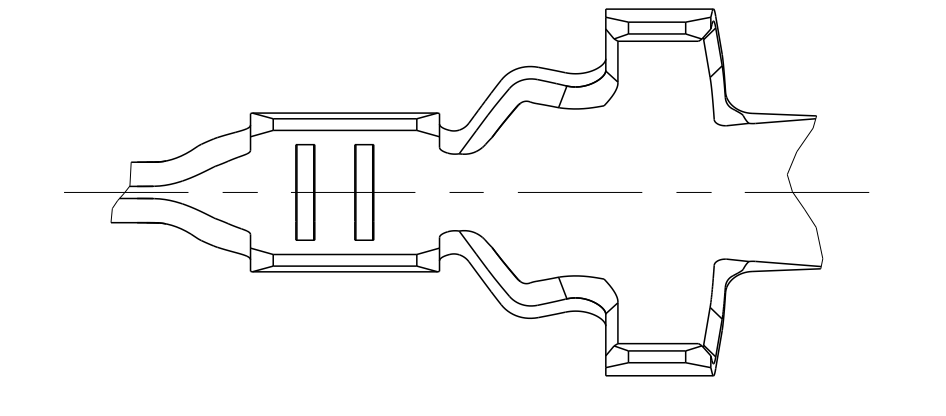
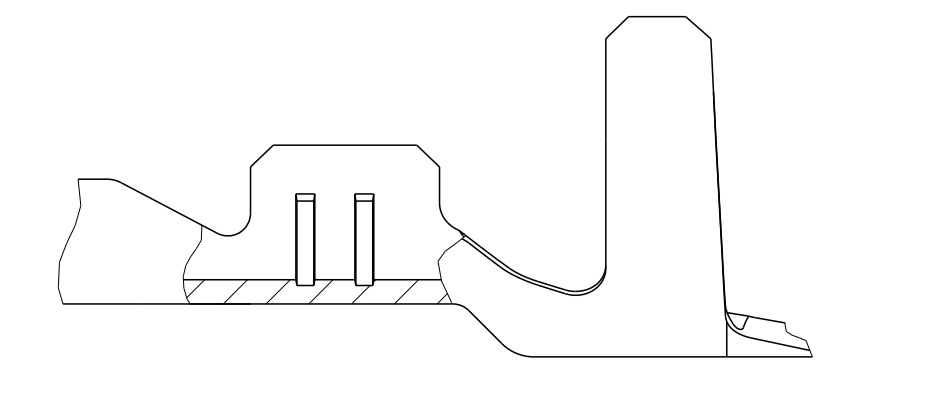
DESIGN 4  
Ausfuehrung 4



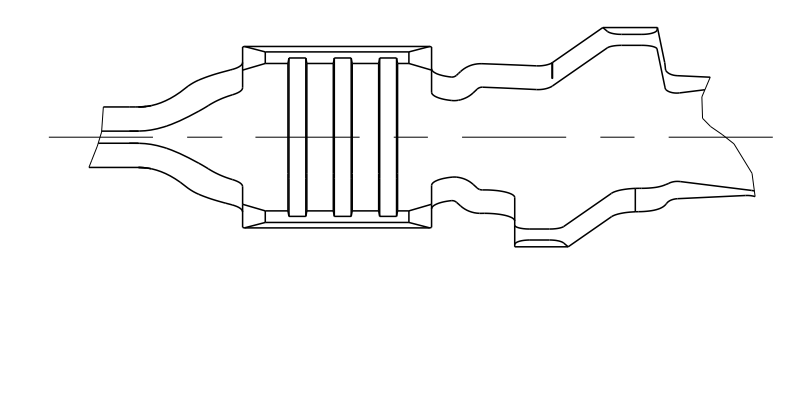
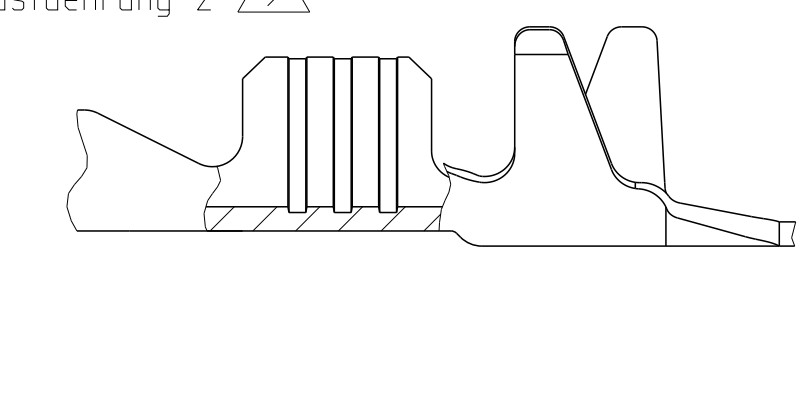
DESIGN 5  
Ausfuehrung 5



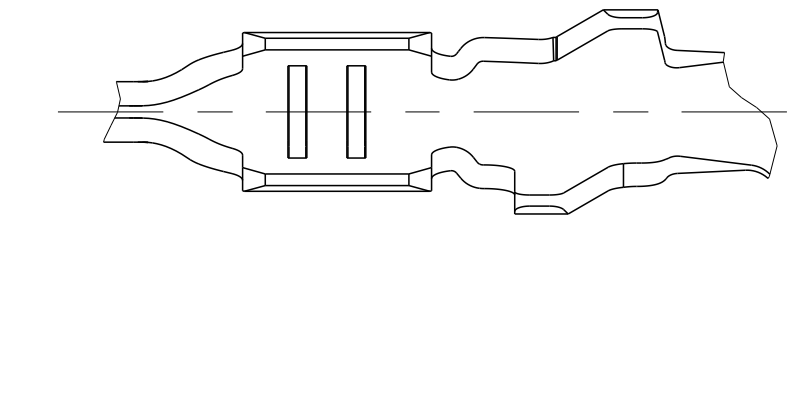
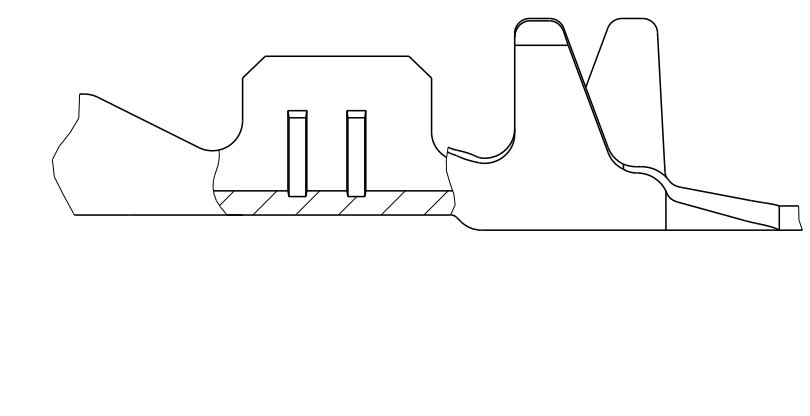
DESIGN 6  
Ausfuehrung 6



DESIGN 2  
Ausfuehrung 2



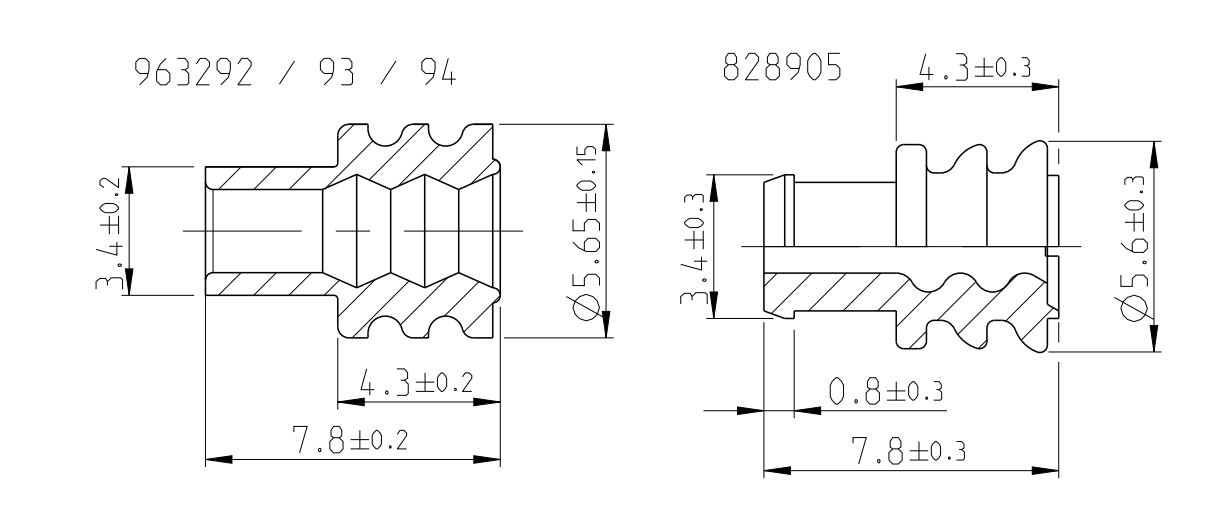
DESIGN 3  
Ausfuehrung 3



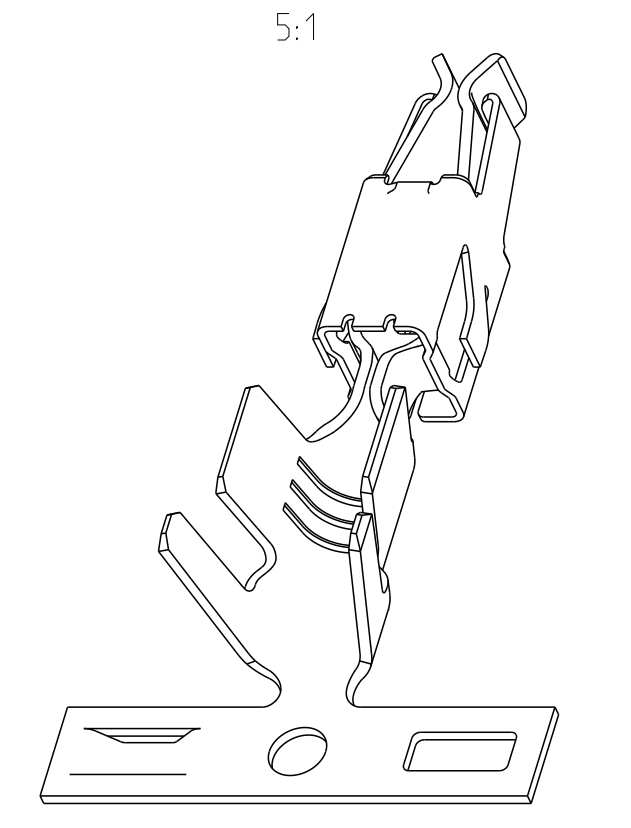
TE ORDER NO. STRIP FORM Bandware	REV.	DESIGN Ausfuehrung	MATERIAL Werkstoff	SURFACE Oberflaeche	WIRE RANGE Drahtgroessen Bereich [mm²]	INSULATION Isolations Ø [mm]	STRIP FROM WIRE CRIMP INSUL.-CRIMP Iso.-Crimp Bandware	A	B	C	D	CRIMP DATA AND CRIMP TOOL Crimpdata u. Crimpwerkzeuge
1241978-2	A	1	CuSn 4	PRET INNED vorverzinnt	>2.5-4.0	2.7-3.7	E = 4.5 G = 4.7 DDr = 2.3	H = 5.8 K = 6.0 D = 3.3	3.6	5.0	6.5	19.5
1241978-1	A		CuFe2	PRET INNED vorverzinnt								
4-965999-1	F		CuNiSi	△								
2-965999-1	F		CuSn 4	△								
965999-6	A	1	CuSn 4	△	>1.0-2.5	2.2-3.0	E = 3.6 G = 3.8 DDr = 1.8	H = 4.7 K = 4.9 D = 2.6	3.3	4.3	5.8	18.8
965999-2	F		CuSn 4	PRET INNED vorverzinnt								
965999-1	F		CuFe2	PRET INNED vorverzinnt								
4-964284-1	F		CuNiSi	△								
2-964284-1	F		CuSn 4	△								
964284-6	A	1	CuSn 4	△	0.5-1.0	1.4-2.1	E = 2.5 G = 2.7 DDr = 1.2	H = 3.7 K = 3.9 D = 1.8	3.0	4.0	5.5	18.8
964284-2	F		CuSn 4	PRET INNED vorverzinnt								
964284-1	F		CuFe2	PRET INNED vorverzinnt								
2-2141892-1	△	A	CuSn 4	△	0.35	1.2-1.3	E = 2.4 G = 2.3 DDr = 1.0	H = 2.9 K = 2.9 D = 1.4	2.5	3.5	5.6	18.8
2141892-2	△	A	CuSn 4	PRET INNED vorverzinnt								
2-964280-1	F		CuSn 4	△								
964280-2	F	3	CuSn 4	PRET INNED vorverzinnt	0.2-0.5	1.15-1.6	E = 2.1 G = 2.1 DDr = 0.8	H = 2.7 K = 2.8 D = 1.4	2.5	3.5	5.6	18.8
964280-1	F		CuFe2	PRET INNED vorverzinnt								
2-1564326-1	△	A	CuSn 4	△	0.35	1.2-1.3	E = 2.4 G = 2.3 DDr = 1.0	H = 4.85 K = 4.5 D = 3.2	2.5	4.7	6.3	19.55
1241872-1	△	A	CuFe2	PRET INNED vorverzinnt	>1.0-2.5	2.2-3.0	E = 3.6 G = 3.8 DDr = 1.8	H = 5.3 K = 5.0 D = 3.5	3.5	5.2	6.8	19.55
1241868-1	△	A	CuFe2	PRET INNED vorverzinnt	0.5-1.0	1.4-2.7	E = 2.5 G = 2.7 DDr = 1.2	H = 5.1 K = 4.8 D = 3.3	3.0	4.7	6.3	19.55
4-1241864-1	△	A	CuNiSi	△	0.2-0.5	1.2-2.3	E = 2.1 G = 2.1 DDr = 0.8	H = 4.7 K = 4.5 D = 3.2	2.5	4.7	6.3	19.55
6-964273-6	F		CuSn 4	△								
3-964273-1	F		CuNiSi	△								
2-964273-1	F	5	CuSn 4	△	>1.0-2.5	2.2-3.0	E = 3.6 G = 3.8 DDr = 1.8	H = 5.3 K = 5.0 D = 3.5	3.5	5.2	6.8	19.55
964273-2	F		CuSn 4	PRET INNED vorverzinnt								
964273-1	F		CuFe2	PRET INNED vorverzinnt								
6-964286-6	F		CuSn 4	△								
2-964286-1	F	5	CuSn 4	△	0.5-1.0	1.4-2.7	E = 2.5 G = 2.7 DDr = 1.2	H = 5.1 K = 4.8 D = 3.3	3.0	4.7	6.3	19.55
964286-2	F		CuSn 4	PRET INNED vorverzinnt								
964286-1	F		CuFe2	PRET INNED vorverzinnt								
2-2141894-1	△	A	CuSn 4	△	0.35	1.2-1.3	E = 2.4 G = 2.3 DDr = 1.0	H = 4.85 K = 4.5 D = 3.2	2.5	4.7	6.3	19.55
2141894-2	△	A	CuSn 4	PRET INNED vorverzinnt								
6-964282-6	F		CuSn 4	△								
2-964282-1	F	6	CuSn 4	△	0.2-0.5	1.2-2.3	E = 2.1 G = 2.1 DDr = 0.8	H = 4.7 K = 4.5 D = 3.2	2.5	4.7	6.3	19.55
964282-2	F		CuSn 4	PRET INNED vorverzinnt								
964282-1	F		CuFe2	PRET INNED vorverzinnt								

SSE APPLICATION - SPECIFICATION  
siehe Veranlassungsspezifikation  
14-18050

- △ BODY ELECTRO TIN PLATED OVER NICKEL 0.2 µm min.  
Kontaktkoerper galv. verzinkt ueber Nickel 0.2 µm min.  
CONTACT AREA SELECTIV GOLD OVER NICKEL 0.8 µm min.  
Kontaktzone selektiv vergoldet ueber Nickel 0.8 µm min.  
WIRE CRIMP AREA ELECTRO TIN PLATED 1 µm min.  
Drahtcrimbereich galv. verzinkt 1 µm min.
- △ ACCORDING INSULATION DIA IS TO CHOOSE THE SINGLE WIRE SEAL  
Entsprechend dem Isolationsdurchmesser ist die Einzel-Dichtung auszuwaehlen
- △ CUT OFF OPTIONAL  
Optionaler Federabschnitt
- △ VARIANTS WITH GAP-SIZE 0.3mm  
Varianten mit Gap-Size 0.3mm
- △ FOR EVALUATION OF THE GAP-SIZE, THE MATING-FORCE HAS PRIORITY.  
Zur Beurteilung des Oeffnungsmasses ist die Steckkraft ausschlaggebend
- △ CONTACT BODY PRE-SILVER PLATED MIN. 0.8µm  
CONTACT ZONE SELECTIVE PRE-SILVER PLATED MIN. 3µm  
Kontaktkoerper vorversilbert min. 0.8µm  
Kontaktzone selektiv vorversilbert min. 3µm
- △ PUNCHED WITH VOLATILIZING STAMPING-OIL  
Gestanzl mit vertuechtigendem Stanzoel
- △ SERRATIONS OVER THE WHOLE WIDTH OF THE CRIMP AREA  
Rillen ueber die ganze Breite des Crimpbereichs.



SINGLE WIRE SEAL Einzel-Dichtung		
963292-1	2.7-3.0	yellow gelb
963293-1	2.0-2.7	redbrown rotbraun
963294-1	1.2-2.1	blue blau
828905-1	2.2-3.0	white weiss
ORDER No. Bestell-Nr.	INSULATION Ø Isolations Ø	COLOR Farbe



THIS DRAWING IS A CONTROLLED DOCUMENT. DATE: 02 JUN 2003. DRAWN BY: M. Huhn. CHECKED BY: M. Huhn. APPROVED BY: M. Huhn. PRODUCT SPEC: 114-18013. APPLICATION SPEC: 114-18050. WEIGHT: -. CUSTOMER: Customer Drawing. SCALE: 5:1. SHEET: 1 OF 1. REV: B16.

STE TE Connectivity

PRODUCT GROUP DRAWING FOR JUNIORPOWER TIMER CONTACT TYPE A Produkt-Gruppenzeichnung fuer JPT Typ A