



Chipsmall Limited consists of a professional team with an average of over 10 year of expertise in the distribution of electronic components. Based in Hongkong, we have already established firm and mutual-benefit business relationships with customers from,Europe,America and south Asia,supplying obsolete and hard-to-find components to meet their specific needs.

With the principle of “Quality Parts,Customers Priority,Honest Operation,and Considerate Service”,our business mainly focus on the distribution of electronic components. Line cards we deal with include Microchip,ALPS,ROHM,Xilinx,Pulse,ON,Everlight and Freescale. Main products comprise IC,Modules,Potentiometer,IC Socket,Relay,Connector.Our parts cover such applications as commercial,industrial, and automotives areas.

We are looking forward to setting up business relationship with you and hope to provide you with the best service and solution. Let us make a better world for our industry!



Contact us

Tel: +86-755-8981 8866 Fax: +86-755-8427 6832

Email & Skype: info@chipsmall.com Web: www.chipsmall.com

Address: A1208, Overseas Decoration Building, #122 Zhenhua RD., Futian, Shenzhen, China



NUMMER 966 966

VERWENDET FÜR -

CAD-ORIGINAL
ZEICHNUNG NICHT ÄNDERN

LOC
AI
DIST
-

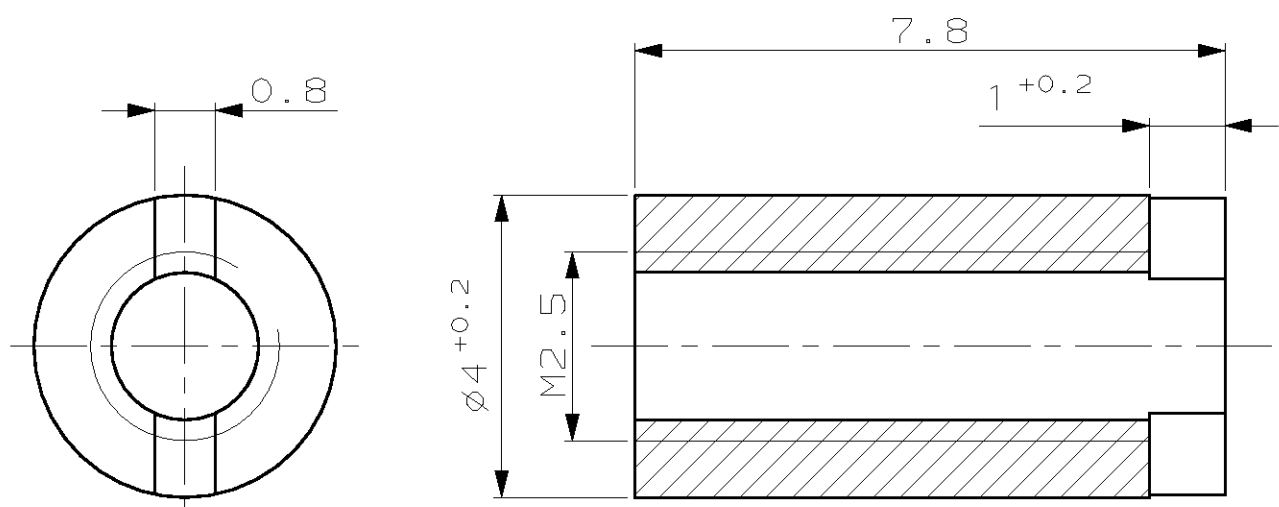
WAR NR. -
PASSEND ZU -

ZEICHNUNG GESCHÜTZT DURCH
©COPYRIGHT 1996
AMP DEUTSCHLAND GMBH
ALLE RECHTE VORBEHALTEN

ÄNDERUNGEN, DIE DEM
TECHNISCHEN FORT-
SCHRITT DIENEN, BE-
HALTEN WIR UNS VOR

REV.	ÄNDERUNG	DATUM	NAME
0	ZEICHNUNG FREIGEgeben	20.6.96	TILLE

NICHT VERMASSTE KANTEN SIND NICHT MAßSTÄBLICH



			ZEICHNUNG GÜLTIG AB		KW25/96	
			AMP		AMP DEUTSCHLAND GmbH D-63225 Langen	
			Benennung			
			GEWINDESÄULE			
966 966-1 NICHTROSTENDER STAHL BLANK			K			
BESTELL-NR.		WERKSTOFF				
			FARBE	± 0.1	A4	966 966
GEZ. 17-JUN-96		GEPR. 17-JUN-96		± -		
W. TILLE		R. KRÄMER		MASSTAB 10:1	BLATT 1 von 1	REV. 0