



Chipsmall Limited consists of a professional team with an average of over 10 year of expertise in the distribution of electronic components. Based in Hongkong, we have already established firm and mutual-benefit business relationships with customers from,Europe,America and south Asia,supplying obsolete and hard-to-find components to meet their specific needs.

With the principle of "Quality Parts,Customers Priority,Honest Operation,and Considerate Service",our business mainly focus on the distribution of electronic components. Line cards we deal with include Microchip,ALPS,ROHM,Xilinx,Pulse,ON,Everlight and Freescale. Main products comprise IC,Modules,Potentiometer,IC Socket,Relay,Connector.Our parts cover such applications as commercial,industrial, and automotives areas.

We are looking forward to setting up business relationship with you and hope to provide you with the best service and solution. Let us make a better world for our industry!



Contact us

Tel: +86-755-8981 8866 Fax: +86-755-8427 6832

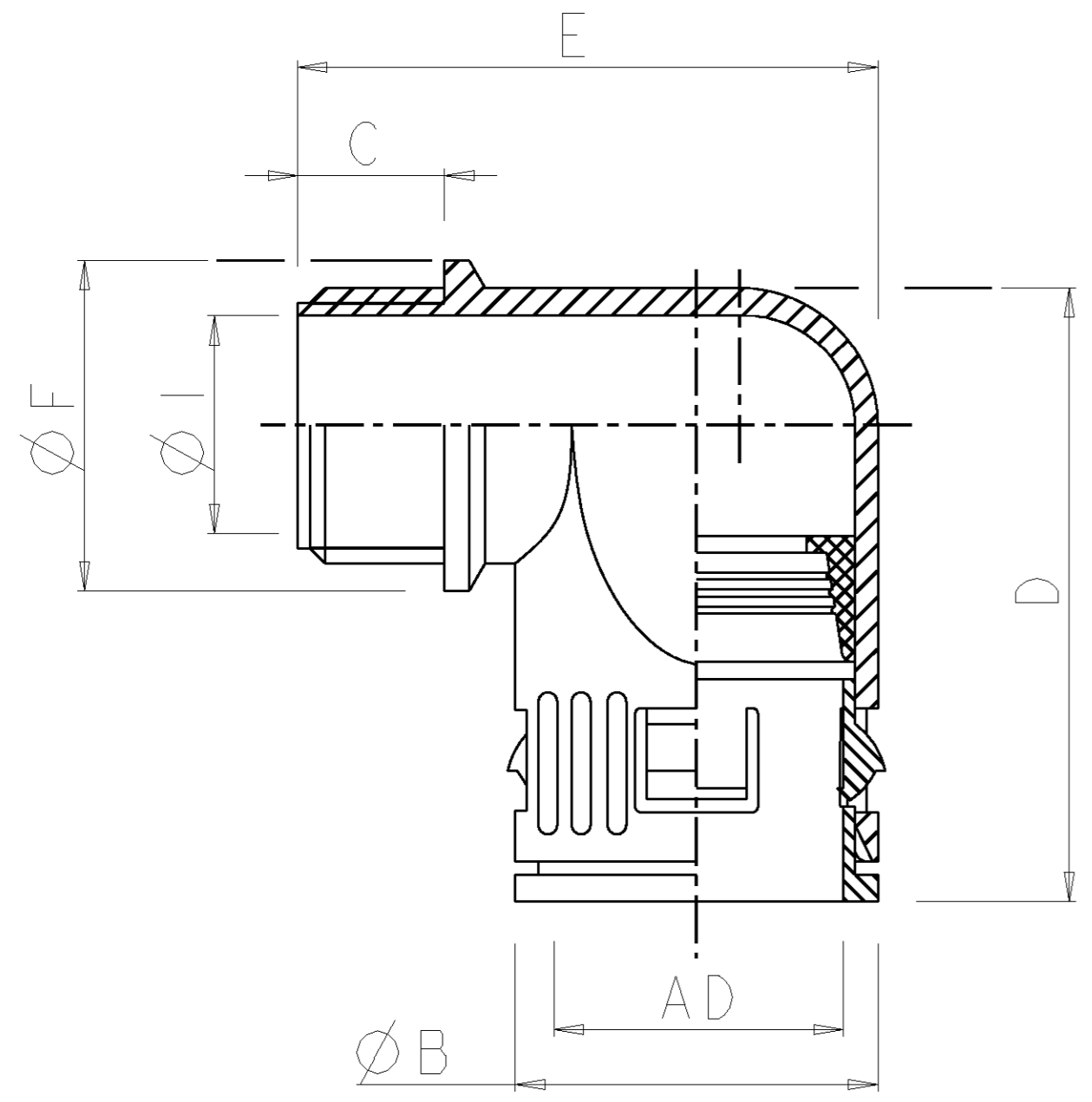
Email & Skype: info@chipsmall.com Web: www.chipsmall.com

Address: A1208, Overseas Decoration Building, #122 Zhenhua RD., Futian, Shenzhen, China



THIS DRAWING IS UNPUBLISHED. VERTRAULICHE UNVERÖFFENTLICHTE ZEICHNUNG. RELEASED FOR PUBLICATION FREI FUER VERÖFFENTLICHUNG. 04.OCT - 98. MATED WITH: PASSEND ZU: BY TYCO ELECTRONICS CORPORATION. ALL RIGHTS RESERVED. ALLE RECHTE VORBEHALTEN. COPYRIGHT 19

LOC	DIST	REVISIONS					
FT	0	P	LTR	DESCRIPTION	DATE	DWN	APVD
PROJEKT NR.: E97-52579		A		New Drawing	21AUG97	K.L.	G.F.
		A1		TOLERANCE CHANGED	15JUN98	K.L.	G.F.
		B		REVISED PER 063B-0674-00	18FEB2002	EZ	SH



AMP #	Trade Size	Thread	Length of Thread	Smallest Inner ϕ	Largest Outer ϕ	Total Length	Total Height	Flange ϕ	Packaging Unit	approx. Weight
	Nenn-groesse	Gewinde	Gewinde-laenge	kleinster Innen ϕ	groesster Aussen ϕ	Gesamt-laenge	Gesamt-hoehe	Flansch	Packungs-einheit	Gewicht
	mm	PG DIN 40430	mm	mm	mm	mm	mm	mm	Stueck Pieces	kg/100p
	AD		C	ϕI	ϕB	D	E	F		$\triangle 5$
1-969817-1	13	13.5	10	15.5	20	40	35	25	50	0.8
1-969817-0	13	11	10	14	20	39	34	23	50	0.75
969817-9	18.5	13.5	11	13.5	26.5	46	44	27	50	1.4
969817-1	10	7	10	8.5	17	33.5	32	16	50	0.4
0-969817-2	13	9	10	12	20	36	34	20	50	0.6
0-969817-3	15.8	11	10	15.5	23	42	37.5	23	50	0.8
0-969817-4	21.2	16	12	18	29.5	50	47	27	50	1.6
0-969817-5	28.5	21	12	24	37	57	55	34	25	2.4
0-969817-6	34.5	29	12	32	44	67.5	63	43	10	3.6
0-969817-7	42.5	36	12	36.5	52	83	70	52	10	5.1
0-969817-8	54.5	48	14	48.5	64	88	83	64	5	6.7

- $\triangle 1$ Material: PA
- $\triangle 2$ Color: black
- $\triangle 3$ Unscaled
- $\triangle 4$ DIN 16901-140

- $\triangle 1$ Material: PA
- $\triangle 2$ Farbe: schwarz
- $\triangle 3$ Unmassstaeblich
- $\triangle 4$ DIN 16901-140

<small>THIS DRAWING IS A CONTROLLED DOCUMENT FOR TYCO ELECTRONICS CORPORATION IT IS SUBJECT TO CHANGE AND THE CONTROLLING ENGINEERING ORGANIZATION SHOULD BE CONTACTED FOR THE LATEST REVISION.</small> <small>DIESES ZEICHNUNGSDOKUMENT WIRD DURCH AMP INCORPORATED KONTROLLIERT. ANDERUNGEN, DIE DEN TECHNISCHEN FORTSCHRITT DIESER, SIND VORBEHALTEN. DEN JEWELIS LETZTBESTEHENDEN AENDERUNGSSTAND ERFAHREN SIE AUF ANFRAGE.</small>		DWN K.Lambart 21AUG97	AMP AMP Deutschland GmbH D - 63225 Langen	
<small>DIMENSIONS: MASSEINHEITEN: mm</small> 		CHK W.Boeck 21AUG97	NAME ROW -P, black Right Angle Connection Corr.Tubing Winkelverschraubung f. Well Schlauch	
<small>TOLERANCES UNLESS OTHERWISE SPECIFIED: ALLGEMEINTOLERANZEN</small> 0 PLC \pm 1 PLC \pm 2 PLC \pm 3 PLC \pm 4 PLC \pm <small>ANGLES/WINKEL \pm</small> <small>FINISH/OBERFLAECHE/FARBE</small>		APVD G.FELDMELER 21AUG97	DRAWING NO. ZEICHNUNGS-NR. 108-1696-1 114-18277 RESTRICTED TO NUR FUER -	
<small>MATERIAL</small> -		PRODUCT SPEC 108-1696-1	SIZE A2	SCALE MASSTAB -3 SHEET BLATT 1 OF VON 1 REV B
<small>CUSTOMER DRAWING</small>		<small>WEIGHT GEWICHT</small> -	<small>CAGE CODE</small> 00779	<small>APVD</small> G.FELDMELER