



Chipsmall Limited consists of a professional team with an average of over 10 year of expertise in the distribution of electronic components. Based in Hongkong, we have already established firm and mutual-benefit business relationships with customers from,Europe,America and south Asia,supplying obsolete and hard-to-find components to meet their specific needs.

With the principle of "Quality Parts,Customers Priority,Honest Operation,and Considerate Service",our business mainly focus on the distribution of electronic components. Line cards we deal with include Microchip,ALPS,ROHM,Xilinx,Pulse,ON,Everlight and Freescale. Main products comprise IC,Modules,Potentiometer,IC Socket,Relay,Connector.Our parts cover such applications as commercial,industrial, and automotives areas.

We are looking forward to setting up business relationship with you and hope to provide you with the best service and solution. Let us make a better world for our industry!



Contact us

Tel: +86-755-8981 8866 Fax: +86-755-8427 6832

Email & Skype: info@chipsmall.com Web: www.chipsmall.com

Address: A1208, Overseas Decoration Building, #122 Zhenhua RD., Futian, Shenzhen, China



tyco

Electronics

TYCO ELECTRONICS CORPORATION
WWW.TYCOELECTRONICS.COM

AMP



tyco

Electronics

Flexible Cable Protection System
Catalog 1307244 Revised 1-04

AMP



Electronics

Product Facts

- For cables that require better protection
- Fittings that allow more reliable connections to be made
- Fittings that enhance their reliability under many extreme conditions of use in the manufacture of machinery and construction
- High quality complete systems which combine innovative technology with rapid ex-stock availability
- In conformity with the latest industry standards
- Recognized under the Component Program of Underwriters Laboratories Inc.  on applied products as marked.
- Certified by Canadian Standards Association on applied products as marked. 
- Certified by VDE on applied products as marked. 

Related Product Data

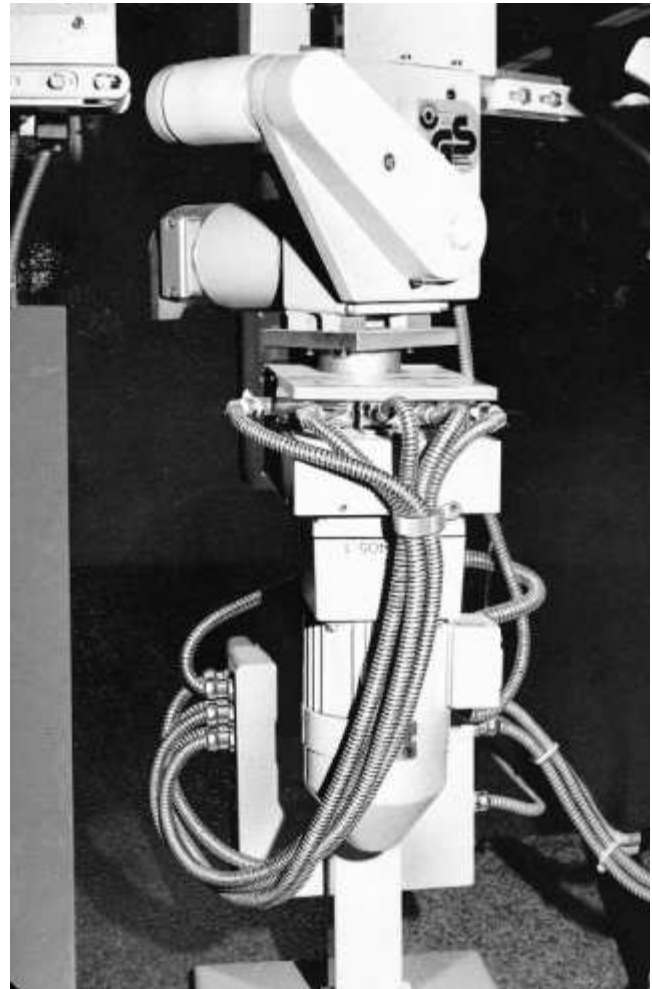
Catalog 124132
Products for Insulating and Bundling

Product Specifications

108-1696 *Flexagraff*
108-1696-1 *Rohrflex*
108-1696-2 *Airflex*

Application Specifications

114-18274 *Flexagraff-AS, -PU-AS, -ME-ASF*
114-18275 *Flexagraff-CU*
114-18276 *Airflex-KUW-PU*
114-18277 *Rohrflex-PA 6, Rohrflex-PA 12*



CPC/Flexa Selection Aid

CPC Shell Size	Flexa Connector Female	PA6 Flexa Tubing	Flexa Connector Male	Flexa R/A Connector Female	Flexa Counter Nut	Flat Sealing Washer
11	1-969807-2	969789-2	969803-2	969817-2	796260-2	796257-2
13	1-969809-3	969789-3	969803-3	969817-3	796260-3	796255-2
17	1-969811-4	969789-4	969803-4	969817-4	796260-5	796255-3
23	2-969813-5	969789-5	969803-5	969817-5	796260-6	796255-4

Table of Contents

Types of **FLEXAquick - System** and Types of **ROHRflex - Tubing** 4

Assembly Instructions **FLEXAquick** 5

Corrugated Plastic Tubing, **FLEXAquick-System**

ROHRflex-PA 6 (IP 68) 6

ROHRflex-PA 6 S (IP 68) 7

ROHRflex-PA 6-D 8

ROHRflex-PA 6-CSA 8

ROHRflex-Multi-PA 6 9

ROHRflex-PA 12 (IP 68) 9

Corrugated Plastic Tubing Connections

RQG-P (IP 68) 10

RQG-M (IP 67) 11

RQG-N (IP 67) 12

RQG1-P (IP 66) 13

RQGC-N (IP 67) 14

RQG-CTG 15

RQW-P (IP 67) 16

RQW-M (IP 67) 17

RQW1-P (IP 65) 18

RQW-N (IP 67) 19

RQW-CTG 20

RQWC-N (IP 67) 21

RQG2-U (IP 67) 22

RQG3-U (IP 66) 23

RQGZ-P (IP 67) 24

RQGM-P 25

RQGM2-P 25

RQB1-45 26

RQT (IP 67) 27

RQK (IP 67) 28

RQY (IP 67) 29, 30

Accessories

FR-P and FR-M 31

FR-U and FR-N/C 32

OR-P, GM-P and GM-M 33

GMK-P, GMK-N and GM-N 34

RQE (End Cap) (IP 67) 35

 Tubing Clamp 36

Application Tooling 37-39

Protective Metal Conduits

FLEXAgraff-AS (IP 40) 40

FLEXAgraff-CU (IP 40) 41

Protective Metal Conduits, Liquid Tight

FLEXAgraff-PU-AS (IP 68) 42

FLEXAgraff-ME-ASF 43

SPR-ME-ASF (IP 68) 44

Protective Plastic Conduits

AIRflex-KUW-PU (IP 68) 45

Protective Metal Conduit, with PVC Sheathing

SPR-PVC-AS 46

SPR-EDU-AS 46

Connections with Ferrules

US-P (IP 40 – IP66) 47-49

USW-P (IP 40 – IP66) 50, 51

EW 45-P 52

USK-P (IP 65) 53

EE 54

Chemical Resistance of Plastic Materials 55, 56

Part Number Index 57

Need more information?

Call Technical Support at 1-800-522-6752.

Technical Support is staffed with specialists well versed in all Tyco Electronics products. They can provide you with:

- Technical support
- Catalogs
- Technical Documents
- Product Samples
- Tyco Electronics Authorized Distributor Locations

© Copyright 1998, 2000 and 2003 by Tyco Electronics. All Rights Reserved.

AMP & TYCO are trademarks.

AIRflex, FLEXAgraff, FLEXAquick, ROHRflex are trademarks of FLEXA GmbH.

Megolon is a registered trademark of Rotunda PLC

Santoprene is a registered trademark of Advanced Elastomer Systems, L.P.

TEFLON is a trademark of E.I. Du Pont De Nemours and Company.

Types of FLEXA^{quick}-System and Types of ROHR^{flex}-Tubing

Types of FLEXA^{quick} - System

* dash characterizes connector thread / flange	P	— PG - thread
	M	— Metric thread
	F	— Flange connection
	N	— NPT - thread
	U	— UNEF - thread
	C	—CTG / gas - thread
	S	— plug-type connection
	1	— conically sealing
	2	— inner thread
	3	— inner thread and conically sealing
(combinations possible)	Z	— strain relief
	M	— metal housing
	C	— CSA - tubing dimension
	K	— plastic housing with metal thread
	E	— EMC-insert
	G	— Straight type
	W	— Elbow type
	Y	— Y - type connector
	E	— End cap
	S	— clamp
	D	— Cover for clamp
	V	— Connecting element
	H	— top hat rail clip
	F	— Flange connection
	RQ	— ROHRFLEX^{quick}

Types of ROHR^{flex}- tubing (combinations possible)

Execution:	CSA	— CSA conformal
	CU	— with copper wire braiding
	D	— thick-walled
	G	— slitted
Material:	PA6	— Polyamide 6, V0 according UL 94
	PA6-V	— Polyamide 6, V2 according UL 94
	PA6-S	— Polyamide 6, HB according UL 94
	PA 12	— Polyamide 12
	PP	— Polypropylene
	PE	— Polyethylene
Type of Hose:	ROHR^{flex}	— Corrugated tubing

Assembly Instructions FLEXAquick

Please note the following in order to attain protective System IP 67 acc. to EN 60529/IEC 529

Parting of protective System

Cut the corrugated tubing **ROHRflex-PA** with a knife in the valley of a wave.

More than one wave should not be passed while cutting the tubing.

Assembly

Tubing and screw connection must be assembled to the cutting tubing side.

Push the connector into the tubing until it cannot snap-in any longer and the connector can only be turned with power.

The relieved corrugated tubing pushes the claws of the snap-in-sleeve into the valley of the wave, this means an exact closing of the connection.



Simply push in.

Dismounting

Press the ring of the snap-in-sleeve to the connector case, then pull the tubing out or the connector from the tubing.

The connection is ready for use again.



Quick disconnect without tools.
Press ring to the housing and pull off.



Corrugated Plastic Tubing, FLEXAquick

Performance Characteristics

Corrugated all-plastic tubing,
UL-File-No. E86359

Construction

Inside and outside corrugated all-plastic tubing.

Material

High-quality plastic (PA).

Properties

Air- and liquid-tight, oil resistant up to +80°C, benzine resistant, more resistant to acids and solvents, ozone resistant, free of silicon, cadmium and halogen, self extinguishing and flame retarding.

V O according UL 94

For favorable material properties of the polyamide, we recommend storage of **ROHRflex** tubings under the following conditions:

Storing temperature: +20°C ±5°C
Air humidity: 55 up to 75%

Protective system

IP 68 acc. EN 60529

Temperature range

From approx. -40°C up to approx. +115°C, temporarily withstands temperatures up to approx. +150°C

Application

Installation tubing for protective insulating electrical installations. Suited acc. to the application rules of DIN EN 60204 in the machine and plant construction.

Color

Grey and black

Delivery lengths

25m and 50m depending on dimension, straightly measured.
Also slitted deliverable.

Comments

UL recognized components "Yellow card" on inquiry.

Related Product Data

Application Tooling — Page 37

ROHRflex-PA 6 (IP 68)



Trade Size*** Tubing Outer-Ø	Dimension Inner-Ø x Outer-Ø mm Approx.	ROHRflex- PA 6 (Grey) Part No.	ROHRflex- PA 6 (Black) Part No.	Bending Radius mm ±10%	Weight kg/m ±10%	Minimum Package Size*	Ring Size in Ft.
0.39 10.0	6.5 x 10.0	969790-1	969789-1	13	0.018	50m	164'
0.51 13.0	10.0 x 13.0	969790-2**	969789-2**	20	0.025	50m	164'
0.62 15.8	12.0 x 15.8	969790-3**	969789-3**	35	0.037	50m	164'
0.83 21.2	16.5 x 21.2	969790-4**	969789-4**	45	0.056	50m	164'
1.12 28.5	23.0 x 28.5	969790-5**	969789-5**	55	0.090	50m	164'
1.35 34.5	29.0 x 34.5	969790-6**	969789-6**	65	0.126	25m	82'
1.67 42.5	36.0 x 42.5	969790-7	969789-7	90	0.187	25m	82'
2.14 54.5	48.0 x 54.4	969790-8	969789-8	100	0.225	25m	82'
0.73 18.5	14.3 x 18.2	969790-9	969789-9	40	0.050	50m	164'

*20 Rings of specified length

**GGVS certified

***Advice: For appropriate tubing/screw connecting combinations choose the same trade size AD (tubing outer-Ø).

Notes: 1. Certification from KEMA, affirming that **ROHRflex-PA**-corrugated hoses are suitable for wiring of machines that are exported to Canada.

According to DB-requirements DIN 5510 part 2.

London Underground laboratory (LUL) licensed.

ISSEP proved according to NFF 16101 and 16102.

2. For quantities less than minimums, contact Tyco Electronics.

Corrugated Plastic Tubing, FLEXAquick (Continued)

Performance Characteristics

Corrugated all-plastic tubing,
UL-File-No. E86359/PA 6-S

Construction

Inside and outside corrugated all-plastic tubing.

Material

High-quality plastic (PA).

Properties

Air- and liquid-tight, oil resistant up to +80°C, benzene resistant, more resistant to acids and solvents, ozone resistant, free of silicon, cadmium and halogen, flame-retarding. **HB/V2 according UL 94.** For favorable material properties of the polyamide, we recommend storage of **ROHRflex** tubing under the following conditions: Storing temperature: +20°C ± 5°C Air humidity: 55 up to 75%

Protective system

IP 68 acc. EN 60529

Temperature range

From approx. -50°C up to approx. +115°C, temporarily withstands temperatures up to approx. +150°C

Application

Installation tubing for protective insulating electrical installations. Suited acc. to the application rules of DIN EN 60204 in the machine and plant construction.

Color

Grey and black

Delivery lengths

25m and 50m depending on dimension, straightly measured.

Comment

UL recognized components "Yellow card" on inquiry.

Related Product Data

Application Tooling — Page 37

ROHRflex-PA 6-S (IP 68)



Trade Size** Tubing Outer-Ø AD	Dimension Inner-Ø x Outer-Ø mm Approx.	ROHRflex- PA 6-S (Grey) Part No.	ROHRflex- PA 6-S (Black) Part No.	Bending Radius mm ± 10%	Weight kg/m ± 10%	Minimum Package Size*	Ring Size in Ft.
0.39 10.0	6.5 x 10.0	2-969791-1	969791-1	13	0.020	50m	164'
0.51 13.0	10.0 x 13.0	2-969791-2	969791-2	20	0.024	50m	164'
0.62 15.8	12.0 x 15.8	2-969791-3	969791-3	35	0.034	50m	164'
0.83 21.2	16.5 x 21.2	2-969791-4	969791-4	45	0.056	50m	164'
1.12 28.5	23.0 x 28.5	2-969791-5	969791-5	55	0.090	50m	164'
1.35 34.5	29.0 x 34.5	2-969791-6	969791-6	65	0.120	25m	82'
1.67 42.5	36.0 x 42.5	2-969791-7	969791-7	90	0.165	25m	82'
2.14 54.5	48.0 x 54.4	2-969791-8	969791-8	100	0.225	25m	82'
0.73 18.5	14.3 x 18.2	2-969791-9	969791-9	40	0.050	50m	164'

*20 Rings of specified length.

**Advice: For appropriate tubing/screw connecting combinations choose the same trade size AD (tubing outer-Ø).

Corrugated Plastic Tubing, FLEXAquick (Continued)

Performance Characteristics

Corrugated all-plastic tubing.

Construction

Inside and outside corrugated all-plastic tubing.

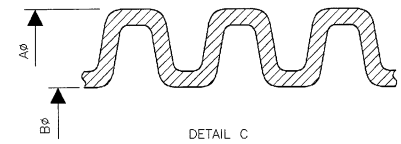
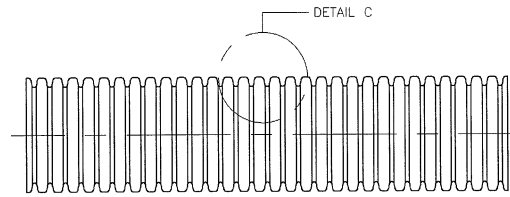
Material

High-quality plastic (PA).

Delivery lengths

25m and 50m depending on dimension, straightly measured.

ROHRflex-PA 6-D



Trade Size* Tubing Outer-Ø AD	Dimension Inner-Ø x Outer-Ø mm Approx.	ROHRflex- PA 6-D (Grey) Part No.	ROHRflex- PA 6-D (Black) Part No.	Bending Radius mm ±10%	Weight kg/m ±10%	Minimum Package Size
0.39 10.0	6.5 x 10.0	796790-1	2-796790-1	15	0.025	50m
0.51 13.0	9.5 x 13.0	796790-2	2-796790-2	25	0.035	50m
0.62 15.8	11.5 x 15.8	796790-3	2-796790-3	35	0.050	50m
0.73 18.5	13.8 x 18.2	796790-4	2-796790-4	40	0.050	50m
0.83 21.2	16.0 x 21.2	796790-5	2-796790-5	50	0.082	50m
1.12 28.5	22.0 x 28.5	796790-6	2-796790-6	60	0.115	50m
1.35 34.5	28.4 x 34.5	796790-7	2-796790-7	70	0.155	25m
1.67 42.5	35.5 x 42.5	796790-8	2-796790-8	100	0.212	25m
2.14 54.5	47.0 x 54.5	796790-9	2-796790-9	110	0.260	25m

*Advice: For appropriate tubing/screw connecting combinations choose the same trade size AD (tubing outer-Ø).

Performance Characteristics

Corrugated all-plastic tubing.

Construction

Inside and outside corrugated all-plastic tubing.

Material

High-quality plastic (PA).

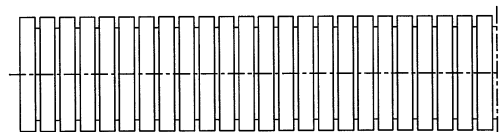
Color

Black

Delivery lengths

25m and 50m depending on dimension, straightly measured.

ROHRflex-PA 6-CSA



Trade Size* Tubing Outer-Ø AD	NPT	Dimension Inner-Ø x Outer-Ø mm Approx.	ROHRflex- PA 6-D Part No.	Bending Radius mm ±10%	Weight kg/m ±10%	Delivery Lengths In Rings
0.51 13.0	1/4"	9.5 x 13.0	796472-1	15	0.030	50m
0.62 15.8	5/16"	11.5 x 15.8	796472-2	25	0.050	50m
0.70 17.8	3/8"	12.9 x 17.8	796472-3	30	0.060	50m
0.86 21.8	1/2"	16.5 x 21.8	796472-4	40	0.090	50m
1.12 28.5	3/4"	22.0 x 28.5	796472-5	50	0.130	50m
1.35 34.4	1"	27.7 x 34.4	796472-6	60	0.160	25m
1.67 42.5	1 1/4"	35.5 x 42.5	796472-7	90	0.187	25m

*Advice: For appropriate tubing/screw connecting combinations choose the same trade size AD (tubing outer-Ø).

Corrugated Plastic Tubings, FLEXAquick (Continued)

Performance Characteristics

Corrugated all-plastic tubing, highly flexible.

Construction

Inside and outside corrugated all-plastic tubing.

Material

High-quality plastic (PA).

Properties

High alternate bending strength, improved insulation properties due to lower absorption of humidity, air- and liquid-tight, oil and benzene resistant, ozone resistant, free of silicon, cadmium and halogen, self-extinguishing and flame retarding. **V2 (V0) according UL 94.** For favorable material properties of the polyamide, we recommend storage of **ROHRflex** tubings under the following conditions:
 Storing temperature: +20°C ± 5°C
 Air humidity: 55 up to 75%

Protective system

IP 68 acc. EN 60529

Temperature range

From approx. -50°C up to approx. +100°C, temporarily withstands temperatures up to approx. +150°C

Application

Installation tubing for protective insulating electrical installations. Suited acc. to the application rules of DIN EN 60204 in the machine and plant construction, especially for frequent reversed bending, i.e. robots.

Color

Grey and black

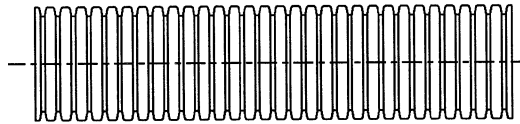
Delivery lengths

25m and 50m depending on dimension, straightly measured. Also slitted deliverable.

Related Product Data

Application Tooling — Page 37

ROHRflex-Multi-PA 6



Trade Size Tubing Outer-Ø AD	Dimension Inner-ØA x Outer-ØB mm Approx.	ROHRflex-Multi-PA 6 (Grey) Part No.	ROHRflex-Multi-PA 6 (Black) Part No.	Bending Radius mm	Approx. Weight kg/m	Minimum Package Size
2.76 70.0	66.5 x 79.2	2-796361-1	796361-1	170	0.69	10m
3.74 95.0	91.0 x 106.0	2-796361-2	796361-2	225	0.93	10m

ROHRflex-PA 12 (IP 68)



Trade Size** Tubing Outer-Ø AD	Dimension Inner-Ø x Outer-Ø mm Approx.	ROHRflex-PA 12 (Grey) Part No.	ROHRflex-PA 12 (Black) Part No.	Bending Radius mm ± 10%	Weight kg/m ± 10%	Minimum Package Size*	Size in Ft.
0.39 10.0	6.5 x 10.0	969792-1	969793-1	13	0.020	50m	164'
0.51 13.0	10.0 x 13.0	969792-2	969793-2	15	0.024	50m	164'
0.62 15.8	12.0 x 15.8	969792-3	969793-3	22	0.034	50m	164'
0.83 21.2	16.5 x 21.2	969792-4	969793-4	27	0.056	50m	164'
1.12 28.5	23.0 x 28.5	969792-5	969793-5	45	0.090	50m	164'
1.35 34.5	29.0 x 34.5	969792-6	969793-6	50	0.120	25m	82'
1.67 42.5	36.0 x 42.5	969792-7	969793-7	80	0.165	25m	82'
2.14 54.5	48.0 x 54.4	969792-8	969793-8	100	0.225	25m	82'
0.73 18.5	14.3 x 18.2	969792-9	969793-9	27	0.050	50m	164'

*20 Rings of specified length.

**Advice: For appropriate tubing/screw connecting combinations choose the same trade size AD (tubing outer-Ø).

Corrugated Plastic Tubing Connections

Performance Characteristics

One-piece plastic quick screw connection with PG-outer thread acc. to DIN 40430 for corrugated tubings as well as Reducing or Extending.

Construction

Screw connection case with hexagon wrench surface and fixed PG connecting thread DIN 40430 as well as an integrated snap-in sleeve and sealing.

Material

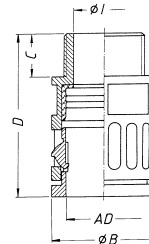
High-quality, impact resistant plastic material (PA)

Sealing: Santoprene®

Easy to assemble

Easy to assemble due to one-piece screw connection with push-in lock. Simple disconnect by displacing the snap-in sleeve. Smallest outer dimensions to be used under confined conditions. Smallest inner-Ø ≥ tubing inside diameter.

RQG-P (IP 68)



Protective system

IP 68 acc. EN 60529

Temperature range

From approx. -30°C up to approx. +100°C

Application

For expert assembly, as protective insulating screw connection suited acc. to the application rules of DIN EN 60204 in the machine and plant construction.

Color

Grey and black

Suitable for tubing types

Corrugated tubing, type: **ROHRflex**.

Trade Size** Tubing Outer-Ø AD	RQG-P (Grey) Part Number	RQG-P (Black) Part Number	Thread DIN 40430 PG	Smallest Inner-Ø I	Largest Outer-Ø B	Length of Thread C	Total Length D	Wrench size across flats SW	Packet/ Pieces	Weight kg/100 p. Approx.
0.39 10.0	969804-1	969803-1	7	7.0	17.0	10.0	32.5	15.5	50	0.35
0.39 10.0	969832-1	969831-1	9	7.0	18.5	10.0	32.5	15.5	50	0.35
0.39 10.0	1-969832-1	1-969831-1	11	7.0	21.0	10.0	32.5	15.5	50	0.40
0.39 10.0	3-969832-1	3-969831-1	13.5	7.0	23.0	10.0	32.5	15.5	25	0.45
0.51 13.0	969834-2	969833-2	7	8.0	20.0	10.0	35.0	18.0	50	0.45
0.51 13.0	969804-2*	969803-2*	9	10.0	20.0	10.0	35.0	18.0	50	0.45
0.51 13.0	2-969832-2	2-969831-2	11	10.0	21.0	10.0	35.0	18.0	50	0.50
0.51 13.0	4-969832-2	4-969831-2	13.5	10.0	23.0	10.0	35.0	18.0	25	0.50
0.62 15.8	969804-3*	969803-3*	11	12.5	23.0	10.0	37.0	21.0	50	0.60
0.62 15.8	5-969832-3	5-969831-3	13.5	12.5	23.0	10.0	37.0	21.0	25	0.60
0.83 21.2	969834-4	969833-4	13.5	15.4	29.5	12.0	43.5	27.0	10	0.90
0.83 21.2	969804-4*	969803-4*	16	17.0	29.5	12.0	43.5	27.0	50	1.00
1.12 28.5	969834-5	969833-5	16	17.0	37.0	12.0	46.0	34.0	10	1.50
1.12 28.5	969804-5*	969803-5*	21	23.5	37.0	12.0	46.0	34.0	25	1.50
1.35 34.5	969804-6*	969803-6*	29	30.5	44.0	12.0	48.0	40.0	25	2.20
1.67 42.5	969804-7	969803-7	36	36.5	51.5	11.5	50.5	48.0	25	3.10
2.14 54.5	969804-8	969803-8	48	48.5	65.5	14.5	54.0	59.0	10	4.50

*GGVS certified

**Advice: For appropriate tubing/screw connecting combinations choose the same trade size AD (tubing outer-Ø).

Corrugated Plastic Tubing Connections (Continued)

Performance Characteristics

One-piece plastic quick screw connection with metric ISO thread acc. EN 60423 for corrugated tubings.

Construction

Screw connection case with hexagon wrench surface and fixed PG connecting thread DIN 40430 as well as an integrated snap-in sleeve and sealing.

Material

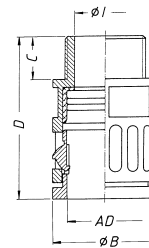
High-quality, impact resistant plastic material (PA)

Sealing: Santoprene®

Easy to assemble

Easy to assemble due to one-piece screw connection with push-in lock. Simple disconnect by displacing the snap-in sleeve. Smallest outer dimensions to be used under confined conditions. Smallest inner-Ø ≥ tubing inside diameter.

RQG-M (IP 67)



Protective system

IP 67 acc. EN 60529

Temperature range

From approx. -30°C up to approx. +100°C

Application

For expert assembly, as protective insulating screw connection suited acc. to the application rules of DIN EN 60204 in the machine and plant construction.

Color

Grey and black

Suitable for tubing types

Corrugated tubing, type: **ROHRflex** — Pages 6-9

Trade Size** Tubing Outer-Ø AD	RQG-M (Grey) Part Number	RQG-M (Black) Part Number	Thread EN 60430 Metric	Smallest Inner-Ø I	Largest Outer-Ø B	Length of Thread C	Total Length D	Wrench size across flats	Packet/ Pieces	Weight kg/100 p. Approx.
0.39 10.0	2-796283-1	796283-1	10 x 1.0	6.5	17.0	12	34.5	15.5	50	0.40
0.51 13.0	2-796283-2*	796283-2*	12 x 1.5	8.0	20.0	12	37.0	18.0	50	0.45
0.51 13.0	2-796283-3	796283-3*	16 x 1.5	10.0	20.0	12	37.0	18.0	50	0.50
0.62 15.8	2-796283-4*	796283-4*	16 x 1.5	12.0	23.0	12	39.0	21.0	50	0.60
0.62 15.8	2-796283-5	796283-5*	20 x 1.5	12.0	23.0	13	39.0	21.0	50	0.70
0.83 21.2	2-796283-6*	796283-6*	20 x 1.5	16.0	29.5	13	44.5	27.0	50	1.00
1.12 28.5	2-796283-7*	796283-7*	25 x 1.5	20.5	37.0	13	47.0	34.0	25	1.40
1.35 34.5	2-796283-8*	796283-8*	32 x 1.5	27.5	44.0	15	51.0	40.0	25	2.20
1.67 42.5	2-796283-9	796283-9	40 x 1.5	35.0	51.5	15	53.5	48.0	25	2.80
2.14 54.5	3-796283-0	1-796283-0	50 x 1.5	45.0	65.5	16	55.0	59.0	10	3.80
0.39 10.0	—	1-796283-1	12 x 1.0	6.5	17.0	12	34.5	15.5	50	0.40

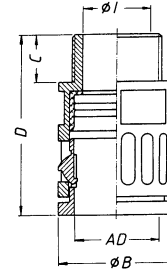
*GGVS certified

**Advice: For appropriate tubing/screw connecting combinations choose the same trade size AD (tubing outer-Ø).

Corrugated Plastic Tubing Connections (Continued)

Plastic quick screw connection with NPT-thread.

RQG-N
(IP 67)



Trade Size** Tubing Outer-Ø AD	RQG-N (Black) Part Number	Thread NPT	Smallest Inner-Ø I	Largest Outer-Ø B	Length of Thread C	Total Length D	Wrench size across flats	Packet/ Pieces	Weight kg/100 p. Approx.
0.39 10.0	796253-1	1/4	7.0	17.0	11.5	34.0	15.5	50	0.35
0.51 13.0	796253-2*	1/4	10.0	20.0	12	37.0	18.0	50	0.40
0.51 13.0	796253-3*	3/8	10.0	20.0	12	37.0	18.0	50	0.45
0.62 15.8	796253-4*	3/8	12.5	23.0	12	39.0	21.0	50	0.60
0.62 15.8	796253-5*	1/2	12.5	27.0	12	39.0	21.0	50	0.70
0.83 21.2	796253-6*	1/2	17.0	29.5	12	43.5	27.0	50	1.00
1.12 28.5	796253-7*	3/4	21.0	37.0	14	47.5	34.0	25	1.40
1.35 34.5	796253-8*	1	27.5	44.0	16	52.0	40.0	25	2.20
1.67 42.5	796253-9	1 1/4	36.5	52.0	18	56.5	49.0	25	3.10
1.67 42.5	1-796253-0	1 1/2	36.5	55.9	18	56.5	49.0	25	3.50
2.14 54.5	1-796253-1	1 1/2	48.5	64.0	18	57.0	60.0	10	4.20
2.14 54.5	1-796253-2	2	48.5	65.0	21	60.0	60.0	10	4.50

*GGVS certified

**Advice: For appropriate tubing/screw connecting combinations choose the same trade size AD (tubing outer-Ø).

Corrugated Plastic Tubing Connections (Continued)

Performance Characteristics

One-piece plastic quick screw connection, conically sealing, with PG-thread acc. to DIN 40430 for corrugated tubings, as well as Reducing or Extending.

Construction

Screw connection case with hexagon wrench surface and fixed PG connecting thread DIN 40430 with conic sealing case.

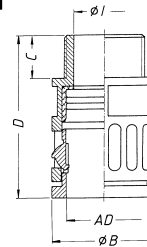
Material

High-quality, impact resistant plastic material (PA).

Easy to assemble

Easy to assemble due to one-piece screw connection with push-in lock. Simple disconnect by displacing the snap-in sleeve. Smallest outer dimensions to be used under confined conditions. Smallest inner-Ø ≥ tubing inside diameter.

RQG1-P (IP 66)



Protective system

IP 66 acc. EN 60529

Temperature range

From approx. -30°C up to approx. +100°C.

Application

For expert assembly, as protective insulating screw connection suited acc. to the application rules of DIN EN 60204 in the machine and plant construction.

Color

Grey and black

Suitable for tubing types

Corrugated tubing, type: **ROHR//ex.**

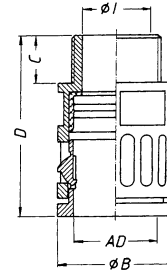
Trade Size* Tubing Outer-Ø AD	RQG1-P (Grey) Part Number	RQG1-P (Black) Part Number	Thread DIN 40430 PG	Smallest Inner-Ø I	Largest Outer-Ø B	Length of Thread C	Total Length D	Wrench size across flats SW	Packet/ Pieces	Weight kg/100 p. Approx.
0.39 10.0	969806-1	969805-1	7	7.0	17.0	10	32.5	15.5	50	0.35
0.39 10.0	1-969806-0	3-969806-0	9	7.0	18.5	10	32.5	15.5	50	0.35
0.39 10.0	1-969806-1	3-969806-1	11	7.0	21.0	10	32.5	15.5	50	0.40
0.39 10.0	1-969806-2	3-969806-2	13.5	7.0	23.0	10	32.5	15.5	25	0.45
0.51 13.0	1-969806-3	3-969806-3	7	8.0	20.0	10	35.0	18.0	50	0.45
0.51 13.0	969806-2	969805-2	9	10.0	20.0	10	35.0	18.0	50	0.45
0.51 13.0	1-969806-4	3-969806-4	11	10.0	21.0	10	35.0	18.0	50	0.50
0.51 13.0	1-969806-5	3-969806-5	13.5	10.0	23.0	10	35.0	18.0	25	0.50
0.62 15.8	969806-3	969805-3	11	12.5	23.0	10	37.0	21.0	50	0.55
0.62 15.8	1-969806-6	3-969806-6	13.5	12.5	23.0	10	37.0	21.0	25	0.60
0.62 15.8	1-969806-7	3-969806-7	16	12.5	26.5	10	37.0	21.0	25	0.65
0.72 18.5	969806-9	2-969806-9	13.5	13.5	25.5	11	40.0	24.0	50	0.80
0.83 21.2	1-969806-8	3-969806-8	13.5	15.4	29.5	12	43.5	27.0	10	0.90
0.83 21.2	969806-4	969805-4	16	17.0	29.5	12	43.5	27.0	50	1.00
1.12 28.5	1-969806-9	3-969806-9	16	17.0	37.0	12	46.0	34.0	10	1.50
1.12 28.5	969806-5	969805-5	21	23.5	37.0	12	46.0	34.0	25	1.40
1.35 34.5	969806-6	969805-6	29	30.5	44.0	12	48.0	40.0	25	2.20
1.67 42.5	969806-7	969805-7	36	36.5	52.0	12	50.5	49.0	25	2.95
2.14 54.5	969806-8	969805-8	48	48.5	64.0	15	54.0	60.0	10	4.30

*Advice: For appropriate tubing/screw connecting combinations choose the same trade size AD (tubing outer-Ø).

Corrugated Plastic Tubing Connections (Continued)

Plastic quick screw connection with NPT-thread.

RQG-N
(IP 67)



Trade Size** Outer-Ø AD	RQG-N (Grey) Part Number	RQG-N (Black) Part Number	Thread NPT	Smallest Inner-Ø I	Largest Outer-Ø B	Length of Thread C	Total Length D	Wrench size across flats SW	Packet/ Pieces	Weight kg/100 p. Approx.
0.39 10.0	2-796253-1	796253-1	1/4"	7.0	17.0	11.5	34.0	15.5	50	0.35
0.51 13.0	2-796253-2	796253-2	1/4"	9.5	20.0	12.0	37.0	18.0	50	0.40
0.51 13.0	2-796253-3	796253-3	3/8"	10.0	20.0	12.0	37.0	18.0	50	0.45
0.62 15.8	2-796253-4	796253-4	3/8"	11.5	20.0	12.0	37.0	18.0	50	0.45
0.62 15.8	2-796253-5	796253-5	1/2"	12.5	27.0	12.0	39.0	21.0	50	0.70
0.83 21.2	2-796253-6	796253-6	1/2"	17.0	29.5	12.0	43.5	27.0	50	1.00
0.70 17.8	—	5020038212*	3/8"	12.5	26.0	12.0	39.5	24.0	50	0.80
0.70 17.8	—	1-796253-3	1/2"	16.0	29.5	13.0	38.5	27.0	50	1.00
0.86 21.8	—	1-796253-4	1/2"	16.0	29.5	13.0	43.5	27.0	50	1.00
1.12 28.5	2-796253-9	796253-7	3/4"	21.0	37.0	14.0	47.5	34.0	25	1.40
1.35 34.4	3-796253-0	796253-8	1"	27.5	44.0	16.0	52.0	40.0	25	2.20
1.67 42.5	3-796253-1	796253-9	1 1/4"	36.5	52.0	18.0	56.5	49.0	25	3.10
1.67 42.5	3-796253-2	1-796253-0	1 1/2"	36.5	55.0	18.0	56.5	49.0	25	3.50
2.15 54.5	—	1-796253-1	1 1/2"	48.5	64.0	18.0	57.0	60.0	10	4.20
2.15 54.5	—	1-796253-2	2"	48.5	65.0	21.0	60.0	60.0	10	4.50

*Part No. on inquiry.

**Advice: For appropriate tubing/screw connecting combinations choose the same trade size AD (tubing outer-Ø).

Corrugated Plastic Tubing Connections (Continued)

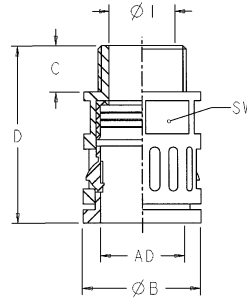
Performance Characteristics

Plastic straight connector with CTG thread.

Color

Black

RQG-CTG



Trade Size* Outer-Ø AD	RQG-CTG Part Number	Thread CTG	Thread Whitworth G	Smallest Inner-Ø I	Largest Outer-Ø B	Length of Thread C	Total Length D	Hex Width SW	Packet/ Pieces	Weight kg/100 p. Approx.
0.39 10.0	796808-1	—	1/4"	7.0	17.0	10.0	32.5	15.5	50	0.35
0.51 13.0	796808-2	—	1/4"	7.0	20.0	10.0	35.0	18.0	50	0.42
0.51 13.0	796808-3	—	3/8"	10.0	21.0	10.0	35.0	18.0	50	0.45
0.51 13.0	796808-4	G 16	1/2"	10.0	27.0	14.0	39.5	18.0	50	0.45
0.62 15.8	796808-5	—	3/8"	10.0	23.0	10.0	37.0	21.0	50	0.60
0.62 15.8	796808-6	G 16	1/2"	12.5	27.0	14.0	41.5	21.0	50	0.60
0.83 21.2	796808-7	G 16	1/2"	16.0	29.5	14.0	45.5	27.0	50	1.00
1.12 28.5	796808-8	G 22	3/4"	20.5	37.0	14.0	48.0	34.0	25	1.40
1.35 34.5	796808-9	G 28	1"	27.5	44.0	16.0	52.0	40.0	25	2.20
1.67 42.5	1-796808-0	G 36	1 1/4"	35.0	52.0	18.0	56.5	49.0	25	2.80
2.15 54.5	1-796808-1	—	1 1/2"	36.5	65.5	15.0	54.0	59.0	10	4.40
2.15 54.5	1-796808-2	G 54	2"	48.5	64.5	18.0	60.0	60.0	10	4.50

*Advice: For appropriate tubing/screw connecting combinations choose the same trade size AD (tubing outer-Ø).

Corrugated Plastic Tubing Connections (Continued)

Performance Characteristics

Plastic quick screw connection elbow with PG-outer thread acc. to DIN 40430.

Construction

Screw connection case, 90° elbow type/bend 90° and 45° with fixed thread as well as an integrated snap-in sleeve and sealing.

Material

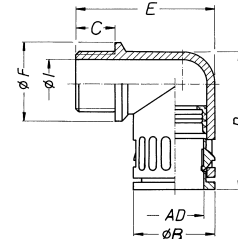
High quality, impact resistant plastic (PA). Sealing: TPE.

Properties

Rational tubing assembly due to one-piece screw connection with push-in lock. Simple dismounting by displacing the snap-in sleeve. Smallest outer dimensions to be used under confined conditions.

- Resistance against oil and benzene
- More resistant to acids and solvents
- Free of silicon, cadmium and halogen.

RQW-P (IP 67)



Protective system

IP 67 acc. EN 60529/IEC 529

Temperature range

From approx. -30° C up to +100° C

Application

For expert assembly, as protective insulation screw connection suited acc. to the application rules of EN 60204 in the machine and plant construction.

Trade Size** Tubing Outer-Ø AD	RQW-P (Grey) Part Number	RQW-P (Black) Part Number	Thread DIN 40430 PG	Smallest Inner-Ø I	Largest Outer-Ø B	Length of Thread C	Total Length D	Total Height E	Connection Ø F	Packet/ Pieces	Weight kg/100 p. Approx.
0.39 10.0	969818-1	969817-1	7	8.5	17.0	10	33.5	32.0	16.0	50	0.40
0.51 13.0	969818-2*	969817-2*	9	12.0	20.0	10	36.0	34.0	20.0	50	0.60
0.51 13.0	1-969818-0	1-969817-0	11	14.0	20.0	10	39.0	34.0	23.0	50	0.75
0.51 13.0	1-969818-1	1-969817-1	13.5	15.5	20.0	10	40.0	35.0	25.0	50	0.80
0.62 15.8	969818-3	969817-3*	11	15.5	23.0	10	42.0	37.5	23.0	50	0.80
0.72 18.5	969818-9	969817-9	13.5	13.5	26.5	11	46.0	44.0	27.0	50	1.40
0.83 21.2	969818-4*	969817-4*	16	18.0	29.5	12	50.0	47.0	27.0	50	1.60
1.12 28.5	969818-5*	969817-5*	21	24.0	37.0	12	57.0	55.0	34.0	25	2.50
1.35 34.5	969818-6*	969817-6*	29	32.0	44.0	12	67.5	63.0	43.0	10	4.10
1.67 42.5	969818-7	969817-7	36	36.5	52.0	12	83.0	70.0	52.0	10	6.60
2.14 54.5	969818-8	969817-8	48	48.5	64.0	14	88.0	83.0	64.0	5	9.50

*GGVS Certified

**Advice: For appropriate tubing/screw connecting combinations choose the same trade size AD (tubing outer-Ø).

Corrugated Plastic Tubing Connections (Continued)

Performance Characteristics

Plastic quick screw connection elbow with metric ISO outer thread acc. to EN 60423.

Construction

Screw connection case, 90° elbow type/bend 90° and 45° with fixed thread as well as an integrated snap-in sleeve and sealing.

Material

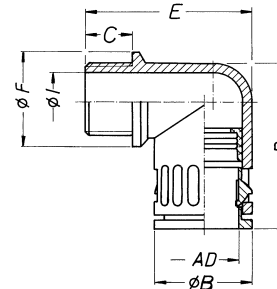
High quality, impact resistant plastic (PA). Sealing: TPE.

Properties

Rational tubing assembly due to one-piece screw connection with push-in lock. Simple dismounting by displacing the snap-in sleeve. Smallest outer dimensions to be used under confined conditions.

- Resistance against oil and benzene
- More resistant to acids and solvents
- Free of silicon, cadmium and halogen.

RQW-M (IP 67)



Protective system

IP 67 acc. EN 60529/IEC 529

Temperature range

From approx. -30°C up to +100°C

Application

For expert assembly, as protective insulation screw connection suited acc. to the application rules of EN 60204 in the machine and plant construction.

Trade Size** Tubing Outer-Ø AD	RQW-M (Grey) Part Number	RQW-M (Black) Part Number	Thread EN 60423 Metric	Smallest Inner-Ø I	Largest Outer-Ø B	Length of Thread C	Total Length D	Total Height E	Connection Ø F	Packet/ Pieces	Weight kg/100 p. Approx.
0.39 10.0	2-796284-1	796284-1	10 x 1.0	7.0	17.0	12	33.5	34.0	16.0	50	0.40
0.51 13.0	2-796284-2	796284-2	12 x 1.5	8.0	20.0	12	36.0	36.5	20.0	50	0.50
0.51 13.0	2-796284-3	796284-3*	16 x 1.5	12.0	20.0	12	36.0	36.5	20.0	50	0.80
0.62 15.8	2-796284-4	796284-4	16 x 1.5	12.0	23.0	12	42.0	40.5	23.0	50	0.90
0.62 15.8	2-796284-5	796284-5*	20 x 1.5	15.5	23.0	13	42.0	41.5	24.0	50	1.00
0.83 21.2	2-796284-6	796284-6	20 x 1.5	15.5	29.5	13	50.0	49.0	27.0	50	1.50
0.83 21.2	2-796284-7	796284-7*	25 x 1.5	18.0	29.5	13	50.0	49.0	29.5	50	1.60
1.12 28.5	2-796284-8	796284-8	25 x 1.5	18.0	37.0	13	57.0	57.0	34.0	25	2.50
1.12 28.5	2-796284-9	796284-9*	32 x 1.5	24.0	37.0	15	57.0	59.0	37.0	25	2.60
1.35 34.5	3-796284-0	1-796284-0	32 x 1.5	24.0	44.0	15	67.5	67.0	43.0	10	3.80
1.35 34.5	3-796284-1	1-796284-1*	40 x 1.5	32.0	44.0	15	67.5	67.0	45.0	10	4.00
1.67 42.5	3-796284-2	1-796284-2	40 x 1.5	32.0	52.0	15	83.0	74.5	52.0	10	6.40
1.67 42.5	3-796284-3	1-796284-3	50 x 1.5	39.0	52.0	16	83.0	75.5	55.0	10	6.60
2.14 54.5	3-796284-4	1-796284-4	50 x 1.5	39.0	64.0	16	88.0	86.5	64.0	5	9.00
2.14 54.5	3-796284-5	1-796284-5	63 x 1.5	53.0	64.0	16	88.0	86.5	68.0	5	9.40

*GGVS certified

**Advice: For appropriate tubing/screw connecting combinations choose the same trade size AD (tubing outer-Ø).

Corrugated Plastic Tubing Connections (Continued)

Performance Characteristics

Plastic quick screw connection elbow, conically sealing, with PG-outer thread acc. to DIN 40430.

Construction

Screw connection case, 90° elbow type and fixed as well as an integrated snap-in sleeve and conic seal case.

Material

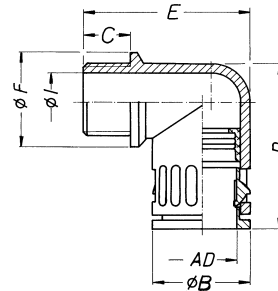
High quality, impact resistant plastic (PA).

Properties

Rational tubing assembly due to one-piece screw connection with push-in lock. Simple dismounting by displacing the snap-in sleeve. Smallest outer dimensions to be used under confined conditions.

- Resistance against oil and benzene
- More resistant to acids and solvents
- Free of silicon, cadmium and halogen.

RQW1-P
(IP 65)



Protective system

IP 65 acc. EN 60529/IEC 529

Temperature range

From approx. -30° C up to +100° C

Application

For expert assembly, as protective insulation screw connection suited acc. to the application rules of EN 60204 in machine and plant construction.

Trade Size** Tubing Outer-Ø	RQW1-P (Grey) Part Number	RQW1-P (Black) Part Number	Thread DIN 40430 PG	Smallest Inner-Ø I	Largest Outer-Ø B	Length of Thread C	Total Length D	Total Height E	Connection Ø F	Packet/ Pieces	Weight kg/100 p. Approx.
0.39 10.0	969820-1	5020050207*	7	8.5	17.0	10	33.5	32.0	16.0	50	0.40
0.51 13.0	969820-2	969819-2	9	12.0	20.0	10	36.0	34.0	20.0	50	0.60
0.62 15.8	969820-3	969819-3	11	15.5	23.0	10	42.0	37.5	23.0	50	0.80
0.72 18.5	969820-9	5020050213*	13.5	13.5	26.5	11	46.0	44.0	27.0	50	1.40
0.83 21.2	969820-4	969819-4	16	18.0	29.5	12	50.0	47.0	27.0	50	1.60
1.12 28.5	969820-5	969819-5	21	24.0	37.0	12	57.0	55.0	34.0	25	2.45
1.35 34.5	969820-6	969819-6	29	32.0	44.0	12	67.5	63.0	43.0	10	3.95
1.67 42.5	969820-7	969819-7	36	36.5	52.0	12	83.0	70.0	52.0	10	6.50
2.14 54.5	969820-8	969819-8	48	48.5	64.0	14	88.0	83.0	64.0	5	9.00

*Part No. on inquiry.

**Advice: For appropriate tubing/screw connecting combinations choose the same trade size AD (tubing outer-Ø).

Corrugated Plastic Tubing Connections (Continued)

Performance Characteristics

Plastic quick screw connection elbow with NPT-outer thread.

Construction

Screw connection case, 90° elbow type/bend 90° and 45° with fixed thread as well as an integrated snap-in sleeve and sealing.

Material

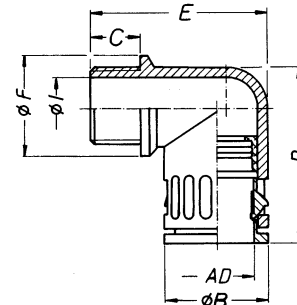
High quality, impact resistant plastic (PA). Sealing: TPE.

Properties

Rational tubing assembly due to one-piece screw connection with push-in lock. Simple dismounting by displacing the snap-in sleeve. Smallest outer dimensions to be used under confined conditions.

- Resistance against oil and benzene
- More resistant to acids and solvents
- Free of silicon, cadmium and halogen.

RQW-N
(IP 67)



Protective system

IP 67 acc. EN 60529/IEC 529

Temperature range

From approx. -30°C up to +100°C

Application

For expert assembly, as protective insulation screw connection suited acc. to the application rules of EN 60204 in the machine and plant construction.

Trade Size* Tubing Outer-Ø	RQW-N (Grey) Part Number	RQW-N (Black) Part Number	Thread NPT	Smallest Inner-Ø I	Largest Outer-Ø B	Length of Thread C	Total Length D	Total Height E	Connection Ø F	Packet/ Pieces	Weight kg/100 p. Approx.
0.39 10.0	2-796254-1	796254-1	1/4	8.5	17.0	10.0	33.5	32.0	16.0	50	0.40
0.51 13.0	2-796254-2	796254-2	1/4	10.0	20.0	11.5	36.0	36.0	20.0	50	0.60
0.62 15.8	2-796254-3	796254-3	3/8	12.5	23.0	12.0	42.0	40.5	23.0	50	0.80
0.62 15.8	2-796254-4	796254-4	1/2	16.0	26.0	12.0	42.0	40.5	26.0	50	1.10
0.83 21.2	2-796254-5	796254-5	1/2	16.0	29.5	12.0	50.0	47.0	27.0	50	1.60
1.12 28.5	2-796254-6	796254-6	3/4	21.0	37.0	14.0	57.5	56.0	34.0	25	2.80
1.35 34.5	2-796254-7	796254-7	1	28.0	44.0	16.0	67.5	63.0	43.0	10	5.60
1.67 42.5	2-796254-8	796254-8	1 1/4	36.5	52.0	18.0	83.0	76.0	52.0	10	5.10
1.67 42.5	2-796254-9	796254-9	1 1/2	36.5	54.0	18.0	83.0	76.0	54.0	10	5.50
2.14 54.5	3-796254-0	1-796254-0	1 1/2	48.5	64.0	18.0	88.0	87.0	64.0	5	6.70
2.14 54.5	3-796254-1	1-796254-1	2	48.5	66.0	21.0	88.0	90.0	66.0	5	7.00

*Advice: For appropriate tubing/screw connecting combinations choose the same trade size AD (tubing outer-Ø).

Corrugated Plastic Tubing Connections (Continued)

Performance Characteristics

Plastic connection elbow with CTG thread.

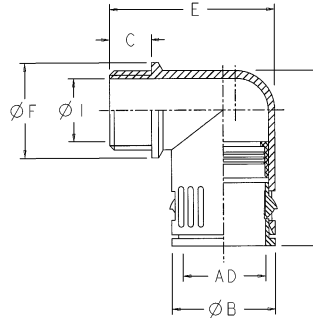
Material

High quality plastic (PA).

Color

Black

RQW-CTG



Trade Size* Tubing Outer-Ø	RQW-CTG Part Number	Thread CTG	Thread Whitworth G	Smallest Inner-Ø I	Largest Outer-Ø B	Length of Thread C	Total Length D	Total Height E	Flange Ø F	Packet/ Pieces	Weight kg/100 p. Approx.
0.51 13.0	796809-1	G 16	1/2"	16.5	20.0	14.0	36.0	40.0	27.0	50	0.80
0.62 15.8	796809-2	G 16	1/2"	16.5	23.0	14.0	42.0	43.0	27.0	50	1.00
0.83 21.2	796809-3	G 16	1/2"	16.5	29.5	14.0	50.0	49.0	27.0	50	1.60
1.12 28.5	796809-4	G 22	3/4"	21.5	37.5	14.0	57.0	57.0	34.0	25	2.60
1.35 34.5	796809-5	G 28	1"	28.5	44.0	16.0	67.5	66.5	43.0	10	4.00
1.67 42.5	796809-6	G 36	1 1/4"	36.0	52.0	18.0	83.0	76.0	52.0	10	6.60
2.14 54.5	796809-7	G 54	2"	54.5	64.0	21.0	88.0	89.5	64.0	5	9.40

*Advice: For appropriate tubing/screw connecting combinations choose the same trade size AD (tubing outer-Ø).

Corrugated Plastic Tubing Connections (Continued)

Performance Characteristics

One-piece plastic quick screw connection elbow, conically sealing, with PG-thread for corrugated tubings.

Construction

Screw connection case, 90° elbow type and fixed PG connecting thread DIN 40430, with conic sealing case.

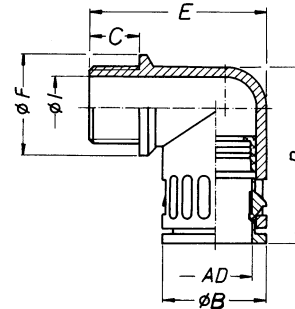
Material

High-quality, impact resistant plastic material (PA).

Easy to assemble

Easy to assemble due to one-piece screw connection with push-in lock. Simple disconnect by displacing the snap-in sleeve. Smallest outer dimensions to be used under confined conditions. Smallest inner-Ø | ≥ tubing inside diameter.

RQWC-N (IP 67)



Protective system

IP 67 acc. EN 60529

Temperature range

From approx. -30°C up to +100°C.

Application

For expert assembly, as protective insulating screw connection suited acc. to

the application rules of DIN EN 60204 in the machine and plant construction.

Color

Black

Suitable for tubing types

Corrugated tubing, type: **ROHRflex**.

Trade Size* Tubing Outer-Ø	RQWC-N (Black) Part Number	Thread NPT	Smallest Inner-Ø I (mm)	Largest Outer-Ø B	Length of Thread C	Total Length D	Total Height E	Connection Ø F	Packet/Pieces	Weight kg/100 p. Approx.
.051 13.0	796493-1	1/4	8.5	17.0	10.0	33.5	32.0	16.0	50	0.40
0.62 15.8	796493-2	3/8	10.0	20.0	11.5	36.0	36.0	20.0	50	0.60
0.70 17.8	796493-3	3/8	12.5	26.0	12.0	45.0	43.5	25.0	50	1.40
0.70 17.8	796493-4	1/2	16.0	29.5	13.0	50.0	46.5	27.0	50	1.60
0.85 21.8	796493-5	1/2	16.0	29.5	13.0	50.0	48.5	27.0	50	1.60
1.12 28.5	796493-6	3/4	21.0	37.0	14.0	57.5	56.0	34.0	25	2.80
1.35 34.4	796493-7	1	28.0	44.0	16.0	67.5	56.0	43.0	10	4.80
1.67 42.5	796493-8	1 1/4	16.0	29.5	12.0	50.0	47.0	27.0	10	1.60

*Advice: For appropriate tubing/screw connecting combinations choose the same trade size AD (tubing outer-Ø).

Corrugated Plastic Tubing Connections (Continued)

Performance Characteristics

One-piece plastic quick screw connection with UNEF- inner thread for corrugated tubings.

Construction

Screw connection case with hexagon wrench surface fixed UNEF inner thread as well as an integrated snap-in sleeve and sealing.

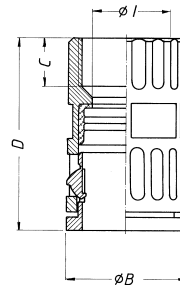
Material

High-quality, impact resistant plastic material (PA).
Sealing: Santoprene®

Easy to assemble

Easy to assemble due to one-piece screw connection with push-in lock. Simple

RQG2-U (IP 67)



disconnect by displacing the snap-in sleeve. Smallest outer dimensions to be used under confined conditions. Smallest inner-Ø I ≥ tubing inside diameter.

Protective system
IP 67 acc. EN 60529

Temperature range

From approx. -30°C up to +100°C.

Application

For expert assembly, as protective insulating screw connection suited acc. to the application rules of DIN EN 60204 in the machine and plant construction.

Color

Grey and black

Suitable for tubing types

Corrugated tubing, type: **ROHRflex**.

Thread dimensions

Other UNEF thread dimensions on inquiry.

Trade Size** Tubing Outer-Ø AD	RQG2-U (Grey) Part Number	RQG2-U (Black) Part Number	Inner Thread UNEF	Smallest Inner-Ø I	Largest Outer-Ø B	Length of Thread C	Wrench Size Total Length D	Across Flats SW	Packet/ Pieces	Weight kg/100 p. Approx.
0.51 13.0	969808-2	969807-2	1/2" (0.500) - 28	10.0	20.0	8	36.6	18.0	50	0.50
0.51 13.0	1-969808-2	1-969807-2	5/8" (0.625) - 24	10.0	20.6	8	36.6	18.0	50	0.55
0.51 13.0	2-969808-2	2-969807-2	3/4" (0.750) - 20	10.0	23.0	9.5	38.5	18.0	50	0.60
0.62 15.8	969810-3	969809-3	5/8" (0.625) - 24	12.5	23.6	9.5	41.7	21.0	50	0.60
0.62 15.8	1-969810-3	1-969809-3	3/4" (0.750) - 20	12.5	23.6	9.5	41.7	21.0	50	0.65
0.62 15.8	3-969810-3	969807-4	15/16" (0.9375) - 20	12.5	30.0	9.5	45.5	21.0	50	0.95
0.62 15.8	2-969810-3	2-969809-3	1" (1.000) - 20	12.5	30.0	9.5	45.5	21.0	50	1.00
0.83 21.2	969812-5	969811-3	5/8" (0.625) - 24	12.5	30.1	9.5	50.5	27.0	50	1.10
0.83 21.2	969812-4	969811-4	7/8" (0.875) - 20	17.0	29.5	9.5	50.5	27.0	50	1.00
0.83 21.2	1-969812-4	1-969811-4	15/16" (0.9375) - 20	17.0	30.1	9.5	50.3	27.0	50	1.10
0.83 21.2	2-969812-4	2-969811-4	1" (1.000) - 20	17.0	30.1	9.5	50.3	27.0	50	1.10
0.83 21.2	3-969812-4	3-969811-4	1 3/16" (1.1875) - 18	17.0	34.6	9.5	52.3	27.0	50	1.40
0.83 21.2	5-969812-7	6-969811-4	1 3/8" (1.375) - 18	17.0	41.0	9.5	52.5	27.0	50	2.15
0.83 21.2	4-969812-4	4-969811-4	1 7/16" (1.4375) - 18	17.0	41.0	9.5	52.5	27.0	50	1.45
0.83 21.2	5-969812-4	5-969811-4	1 3/4" (1.750) - 18	17.0	49.0	9.5	52.5	27.0	50	1.50
1.12 28.5	4-969814-5	4-969813-7	15/16" (0.9375) - 20	17.0	37.0	9.5	52.5	34.0	25	1.30
1.12 28.5	5020047014*	5020047214*	1" (1.000) - 20	23.5	37.0	9.5	54.0	34.0	25	2.05
1.12 28.5	969814-5	969813-5	1 3/16" (1.1875) - 18	23.5	37.0	9.5	52.5	34.0	25	1.45
1.12 28.5	1-969814-5	1-969813-5	1" (1.000) - 20	23.5	37.0	9.5	54.0	34.0	25	1.40
1.12 28.5	2-969814-5	2-969813-5	1 3/8" (1.375) - 18	23.5	41.0	9.5	54.0	34.0	25	1.50
1.12 28.5	3-969814-5	3-969813-5	1 7/16" (1.4375) - 18	23.5	41.0	9.5	54.0	34.0	25	1.50
1.35 34.5	969816-6	969815-6	1 7/16" (1.4375) - 18	30.5	41.0	9.5	55.0	40.0	25	1.80
1.35 34.5	1-969816-6	1-969815-6	1 3/4" (1.750) - 18	30.5	49.0	9.5	56.0	40.0	25	2.55
1.35 34.5	2-969816-6	2-969815-6	2" (2.000) - 18	30.5	55.0	9.5	56.0	40.0	10	2.80
1.35 34.5	—	2-969815-9	1 3/8" (1.375) - 18	23.5	52.0	9.5	56.0	40.0	10	2.30

*Part No. on inquiry.

**Advice: For appropriate tubing/screw connecting combinations choose the same trade size AD (tubing outer-Ø).

Corrugated Plastic Tubing Connections (Continued)

Performance Characteristics

One-piece plastic quick screw connection, conically sealing, with UNEF-inner thread for corrugated tubings.

Construction

Screw connection case with hexagon wrench surface and fixed UNEF inner thread with conic sealing case.

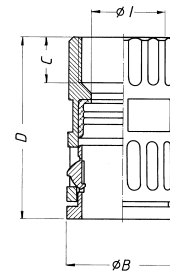
Material

High-quality, impact resistant plastic material (PA).

Easy to assemble

Easy to assemble due to one-piece screw connection with push-in lock. Simple

RQG3-U (IP 66)



disconnect by displacing the snap-in sleeve. Smallest outer dimensions to be used under confined conditions. Smallest inner-Ø I ≥ tubing inside diameter.

Protective system
IP 66 acc. EN 60529

Temperature range

From approx. -30°C up to +100°C.

Application

For expert assembly, as protective insulating screw connection suited acc. to the application rules of DIN EN 60204 in the machine and plant construction.

Color

Grey and black

Suitable for tubing types

Corrugated tubing, type: **ROHRflex**.

Thread dimensions

Other UNEF thread dimensions on inquiry.

Trade Size** Tubing Outer-Ø AD	RQG3-U (Grey) Part Number	RQG3-U (Black) Part Number	Inner Thread UNEF			Smallest Inner-Ø I	Largest Outer-Ø B	Length of Thread C	Total Length D	Wrench Size Across Flats SW	Packet/ Pieces	Weight kg/100 p. Approx.
0.51 13.0	969822-2	969821-2	1/2"	(0.500)	- 28	10.0	20.0	8	36.6	18.0	50	0.50
0.51 13.0	1-969822-2	1-969821-2	5/8"	(0.625)	- 24	10.0	20.6	8	36.6	18.0	50	0.55
0.51 13.0	2-969822-2	2-969821-2	3/4"	(0.750)	- 20	10.0	23.0	9.5	38.5	18.0	50	0.60
0.62 15.8	969824-3	969823-3	5/8"	(0.625)	- 24	12.5	23.6	9.5	41.7	21.0	50	0.60
0.62 15.8	1-969824-3	1-969823-3	3/4"	(0.750)	- 20	12.5	23.6	9.5	41.7	21.0	50	0.65
0.62 15.8	3-969824-3	5020054225*	15/16"	(0.9375)	- 20	12.5	30.0	9.5	45.5	21.0	50	0.95
0.62 15.8	2-969824-3	2-969823-3	1"	(1.000)	- 20	12.5	30.0	9.5	45.5	21.0	50	1.00
0.83 21.2	969826-3	969825-3	5/8"	(0.625)	- 24	12.5	30.1	9.5	50.5	27.0	50	1.10
0.83 21.2	969826-4	969825-4	7/8"	(0.875)	- 20	17.0	29.5	9.5	50.5	27.0	50	1.00
0.83 21.2	1-969826-4	1-969825-4	15/16"	(0.9375)	- 20	17.0	30.1	9.5	50.3	27.0	50	1.10
0.83 21.2	2-969826-4	2-969825-4	1"	(1.000)	- 20	17.0	30.1	9.5	50.3	27.0	50	1.10
0.83 21.2	3-969826-4	3-969825-4	1 3/16"	(1.1875)	- 18	17.0	34.6	9.5	52.3	27.0	50	1.40
0.83 21.2	6-969826-4	6-969825-4	1 3/8"	(1.375)	- 18	17.0	41.0	9.5	52.5	27.0	50	1.42
0.83 21.2	4-969826-4	4-969825-4	1 7/16"	(1.4375)	- 18	17.0	41.0	9.5	52.5	27.0	50	1.45
0.83 21.2	5-969826-4	5-969825-4	1 3/4"	(1.750)	- 18	17.0	49.0	9.5	52.5	27.0	50	1.50
1.12 28.5	4-969828-3	4-969827-7	15/16"	(0.9375)	- 20	17.0	37.0	9.5	52.5	34.0	25	1.30
1.12 28.5	1-969828-5	1-969827-5	1"	(1.000)	- 20	23.5	37.0	9.5	54.0	34.0	25	1.40
1.12 28.5	969828-5	969827-5	1 3/16"	(1.1875)	- 18	23.5	37.0	9.5	52.5	34.0	25	1.45
1.12 28.5	2-969828-5	2-969827-5	1 3/8"	(1.375)	- 18	23.5	41.0	9.5	54.0	34.0	25	1.50
1.12 28.5	3-969828-5	3-969827-5	1 7/16"	(1.4375)	- 18	23.5	41.0	9.5	54.0	34.0	25	1.50
1.35 34.5	2-969830-9	2-969829-9	1 3/8"	(1.375)	- 18	23.5	44.0	9.5	56.0	40.0	10	2.80
1.35 34.5	969830-6	969829-6	1 7/16"	(1.4375)	- 18	30.5	41.0	9.5	55.0	40.0	25	1.80
1.35 34.5	1-969830-6	1-969829-6	1 3/4"	(1.750)	- 18	30.5	49.0	9.5	56.0	40.0	25	2.55
1.35 34.5	2-969830-6	2-969829-6	2"	(2.000)	- 18	30.5	55.0	9.5	56.0	40.0	10	2.80

*Part No. on inquiry.

**Advice: For appropriate tubing/screw connecting combinations choose the same trade size AD (tubing outer-Ø).

Corrugated Plastic Tubing Connections (Continued)

Performance Characteristics

One-piece plastic quick screw connection with PG-thread and additional strain relief for corrugated tubings.

Construction

Screw connection case with hexagon wrench surface fixed connecting thread DIN 40430 as well as an integrated snap-in sleeve, sealing and strain relief.

Material

High-quality, impact resistant plastic material (PA).

Sealing: Santoprene®

Easy to assemble

Easy to assemble due to one-piece screw connection with push-in lock. Simple disconnect by displacing the snap-in sleeve. Smallest inner-Ø I ≥ tubing inside diameter as well as cable clamp possibility in the indicated range.

Protective system

IP 67 acc. EN 60529/IEC 529

Temperature range

From approx. -30° C up to approx. +100° C.

Application

For expert assembly, as protective insulating screw connection suited acc. to the application rules of DIN EN 60204 in the machine and plant construction with possibility of cable strain relief.

Color

Grey and black

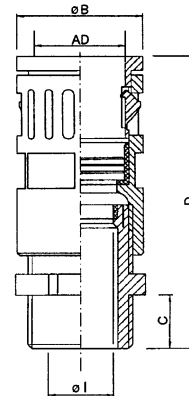
Suitable for tubing types

Corrugated tubing type:

ROHRflex

Other thread dimensions on inquiry.

RQGZ-P (IP 67)



Trade Size* Tubing Outer-Ø AD	RQGZ-P (Grey) Part Number	RQGZ-P (Black) Part Number	Thread PG	Smallest Inner- Ø I	Largest Outer- Ø B	Length of Thread C	Total Length D	Wrench Size Across Flats SW	Packet/ Pieces	Weight kg/100 p. Approx.
0.39 10.0	969836-1	969835-1	7	7.0	17.0	8	51.0	16.0	20	0.80
0.51 13.0	969836-2	969835-2	9	8.0	20.0	8	53.0	18.0	20	1.00
0.62 15.8	969836-3	969835-3	11	10.0	23.0	8	59.0	21.0	20	1.30
0.62 15.8	969836-9	969835-9	13.5	12.0	27.0	8	59.0	21.0	20	1.40
0.72 18.5	1-969836-0	1-969835-0	13.5	12.0	27.0	8	59.0	24.0	20	1.60
0.83 21.2	1-969836-1	1-969835-1	13.5	12.0	29.5	8	70.0	27.0	10	1.90
0.83 21.2	969836-4	969835-4	16	14.0	29.5	10	72.0	27.0	10	1.70
1.12 28.5	969836-5	969835-5	21	18.0	37.0	11	82.0	34.0	10	2.4
1.35 34.5	969836-6	969835-6	29	25.0	44.0	12	85.0	40.0	10	4.2
1.67 42.5	969836-7	969835-7	36	32.0	52.0	13	106.0	49.0	10	10.0
2.14 54.5	969836-8	969835-8	48	44.0	64.0	14	112.0	60.0	10	13.0

***Advice: For appropriate tubing/screw connecting combinations choose the same trade size AD (tubing outer-Ø).**
Note: To ensure a high protection system between cable gland insert and screw connection housing it is necessary to use a sealing compound.