



Chipsmall Limited consists of a professional team with an average of over 10 year of expertise in the distribution of electronic components. Based in Hongkong, we have already established firm and mutual-benefit business relationships with customers from,Europe,America and south Asia,supplying obsolete and hard-to-find components to meet their specific needs.

With the principle of “Quality Parts,Customers Priority,Honest Operation,and Considerate Service”,our business mainly focus on the distribution of electronic components. Line cards we deal with include Microchip,ALPS,ROHM,Xilinx,Pulse,ON,Everlight and Freescale. Main products comprise IC,Modules,Potentiometer,IC Socket,Relay,Connector.Our parts cover such applications as commercial,industrial, and automotives areas.

We are looking forward to setting up business relationship with you and hope to provide you with the best service and solution. Let us make a better world for our industry!



Contact us

Tel: +86-755-8981 8866 Fax: +86-755-8427 6832

Email & Skype: info@chipsmall.com Web: www.chipsmall.com

Address: A1208, Overseas Decoration Building, #122 Zhenhua RD., Futian, Shenzhen, China





P/N 97-68340 for Motorola 68340 144-Pin QFP-to-PGA Adapter

FEATURES

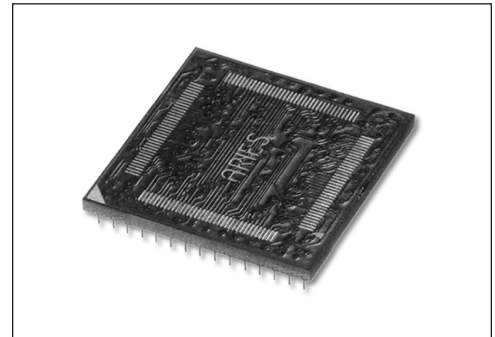
- Convert surface mount QFP packages to a 15x15 PGA footprint
- Reduce costs by using less expensive QFP packages to replace PGA footprints in existing designs
- Pins are mechanically fastened and soldered to board using Aries' patented process, creating a reliable electrical connection and rugged contact
- Consult factory for panelized form or for mounting of consigned chips

GENERAL SPECIFICATIONS

- ADAPTER BODY: FR-4, 0.062 [1.58] thick, with 1-oz. min. Cu traces
- PADS: bare Cu protected with ENIG or immersion white Sn to eliminate coplanarity concerns and solder bridges associated with hot air solder leveling
- PINS: Brass 360 1/2-hard per UNS C36000 ASTM-B16-00
- PIN PLATING: 200 μ [5.08 μ] min. Sn per ASTM B 545 Type 1 or Sn/Pb 93/7 per ASTM B 545 over 100 μ [2.54 μ] Ni per SAE AMS-QQ-N-290
- OPERATING TEMPERATURE: 221°F [105°C]

MOUNTING CONSIDERATIONS

- SUGGESTED PCB HOLE SIZE: 0.062 \pm 0.003 [1.58 \pm 0.08] dia.
- Will plug into standard PGA sockets



CUSTOMIZATION: In addition to the standard products shown on this page, Aries specializes in custom design and production. Special materials, platings, sizes, and configurations can be furnished, depending on the quantity. **NOTE:** Aries reserves the right to change product general specifications without notice.

ORDERING INFORMATION

P/N 97-68340

P/N 97-68340-P for Panelized Form

P/N 145-PGM15024-30 for Wire Wrap PGA
Socket

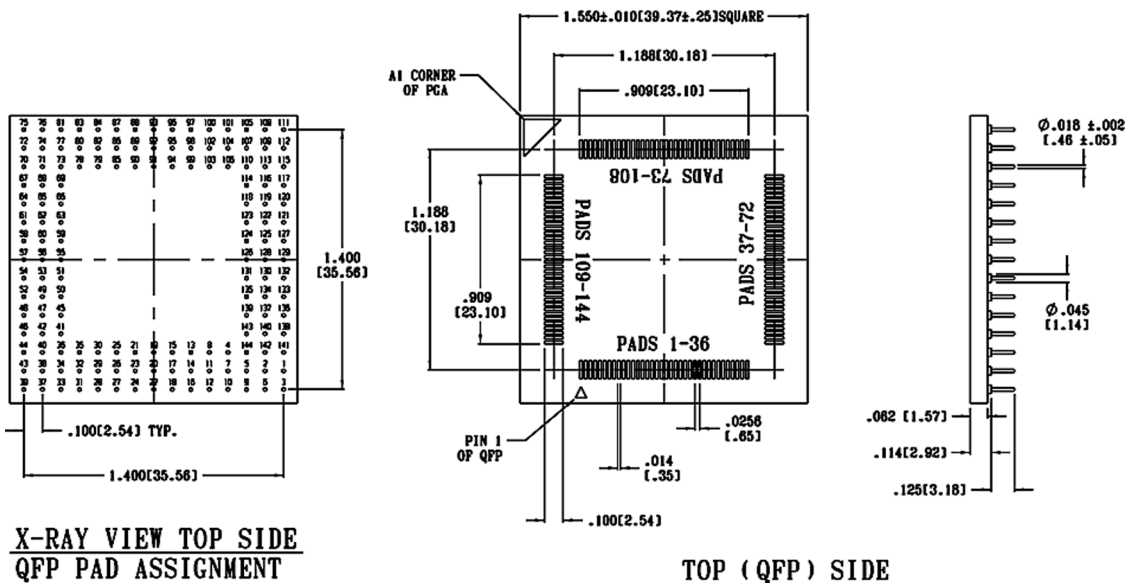
ALL DIMENSIONS: INCHES [MILLIMETERS]

ALL TOLERANCES: \pm 0.005 [0.13] UNLESS OTHERWISE SPECIFIED

ROW-TO-ROW \pm 0.003 [\pm 0.08]

PIN-TO-PIN \pm 0.003 [\pm 0.08] NON-CUMULATIVE

CONSULT FACTORY FOR OTHER SIZES AND CONFIGURATIONS



Bristol, PA 19007-6810 USA
TEL (215) 781-9956 • FAX (215) 781-9845
WWW.ARIESELEC.COM • INFO@ARIESELEC.COM