



Chipsmall Limited consists of a professional team with an average of over 10 year of expertise in the distribution of electronic components. Based in Hongkong, we have already established firm and mutual-benefit business relationships with customers from,Europe,America and south Asia,supplying obsolete and hard-to-find components to meet their specific needs.

With the principle of “Quality Parts,Customers Priority,Honest Operation,and Considerate Service”,our business mainly focus on the distribution of electronic components. Line cards we deal with include Microchip,ALPS,ROHM,Xilinx,Pulse,ON,Everlight and Freescale. Main products comprise IC,Modules,Potentiometer,IC Socket,Relay,Connector.Our parts cover such applications as commercial,industrial, and automotives areas.

We are looking forward to setting up business relationship with you and hope to provide you with the best service and solution. Let us make a better world for our industry!



Contact us

Tel: +86-755-8981 8866 Fax: +86-755-8427 6832

Email & Skype: info@chipsmall.com Web: www.chipsmall.com

Address: A1208, Overseas Decoration Building, #122 Zhenhua RD., Futian, Shenzhen, China

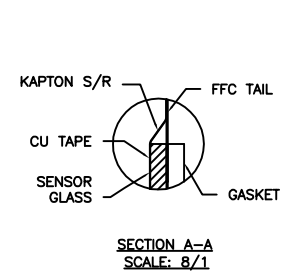
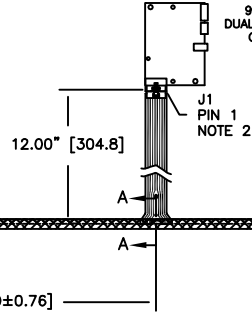
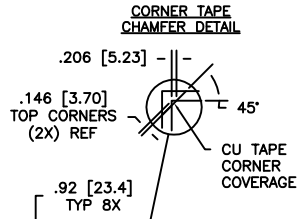


OGA DIAG: 56.27 [1429.3]
 AA DIAG: 55.16 [1401.2]

KIT 98 SKU NUMBER	TYPE	PRODUCT SPEC
98-0003-3625-9	DX123	33626/34017

(DX123)

98-0003-3627-5
 DUAL MODE CONTROLLER
 COMPONENT SIDE



J1 PINOUT	
1	CH 3
2	CH 2
3	PWR
4	2.5V
5	GRD
6	PWR
7	CH 0
8	CH 1

SENSOR FRONT

CU TAPE
 3 SIDES

25.77 [654.6] 2X
 GASKET
 NOTE 3

20.000±0.030 [508.00±0.76]

.41 [10.32]

27.158 [689.80]
 AA

27.970 [710.44]
 OGA

.083 [2.11]
 GLASS REF.
 .170 [4.32]
 TOTAL THK.

46.63 [1184.4] GASKET 2X
 NOTE 3

1.10 [27.9]
 REF

48.016 [1219.59] AA

.41 [10.32]

48.828 [1240.23] OGA



NOTES:

- WEIGHT OF GLASS IN GRAMS: 4643 ±10%
- 8 PIN AMP CONNECTOR
 LATCH STYLE HOUSING P/N: 487526-7
 TIN CONTACTS P/N: 2-487406-4
 HOUSING ORIENTED WITH LATCH UP
- GASKET ON SENSOR BACKSIDE

INCHES [MM]	3M
.X	±.03
.XX	±.03
.XXX	±.05
ANGLES	±1°

DATE	MTD	8/19/10
SCALE	1 = 1	

B	REVISE PER CO 032628	3/11	MTD
01	RELEASE PER CO 031908	8/10	MTD
MKT DWG DST2270DX 55.16"			
AUTOCAD		1 OF 1	
38043-MKT		B	