



Chipsmall Limited consists of a professional team with an average of over 10 year of expertise in the distribution of electronic components. Based in Hongkong, we have already established firm and mutual-benefit business relationships with customers from,Europe,America and south Asia,supplying obsolete and hard-to-find components to meet their specific needs.

With the principle of “Quality Parts,Customers Priority,Honest Operation,and Considerate Service”,our business mainly focus on the distribution of electronic components. Line cards we deal with include Microchip,ALPS,ROHM,Xilinx,Pulse,ON,Everlight and Freescale. Main products comprise IC,Modules,Potentiometer,IC Socket,Relay,Connector.Our parts cover such applications as commercial,industrial, and automotives areas.

We are looking forward to setting up business relationship with you and hope to provide you with the best service and solution. Let us make a better world for our industry!



Contact us

Tel: +86-755-8981 8866 Fax: +86-755-8427 6832

Email & Skype: info@chipsmall.com Web: www.chipsmall.com

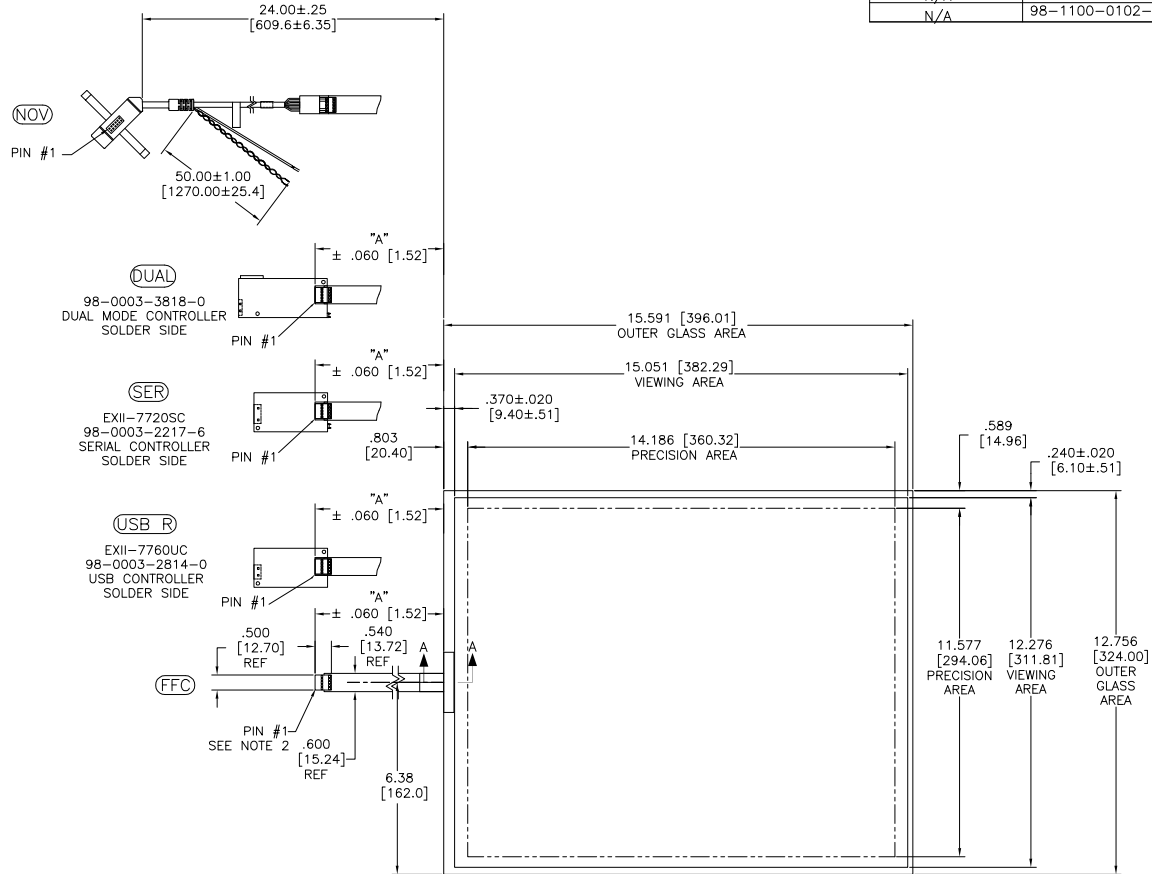
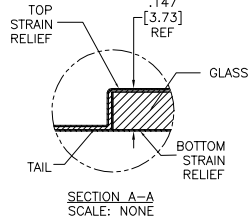
Address: A1208, Overseas Decoration Building, #122 Zhenhua RD., Futian, Shenzhen, China



OGA DIAGONAL: 20.14 [511.67]
 VA DIAGONAL: 19.42 [493.33]
 PA DIAGONAL: 18.31 [465.08]

| TOP LEVEL NUMBER | US NUMBER | TYPE | DIM "A" (TOTAL GLASS TO CONNECTOR) | A/G FINISH | PROD SPEC |
|------------------|----------------|-------|------------------------------------|------------|-----------|
| 17-8891-204 | 98-0003-2660-7 | FFC | 6.00" [152.40] | AG500 | 23655 |
| 17-8891-223 | 98-0003-2663-1 | SER | 6.00" [152.40] | AG500 | 23655 |
| 17-8891-220 | 98-0003-3124-3 | USB R | 6.00" [152.40] | AG500 | 23655 |
| 17-8891-206 | 98-0003-2201-0 | NOV | SEE DWG | AG500 | 23655 |
| 17-8891-205 | 98-0003-2661-5 | FFC | 8.00" [203.20] | AG500 | 23655 |
| 17-8891-227 | 98-0003-2955-1 | SER | 8.00" [203.20] | AG500 | 23655 |
| 17-8891-226 | 98-0003-2664-9 | USB R | 8.00" [203.20] | AG500 | 23655 |
| N/A | 98-0003-3819-8 | DUAL | 6.00" [152.40] | AG500 | 23655 |
| N/A | 98-1100-0101-7 | FFC | 8.00" [203.20] | WC100 | 34523 |
| N/A | 98-1100-0102-5 | USB R | 8.00" [203.20] | WC100 | 34523 |

ESD CLAMHELL CASE IS USED WITH ALL NOV, USB AND SER TERMINATIONS.



- NOTES:
- WEIGHT OF GLASS IN GRAMS: 978±10%
 - NICOMATIC HOUSING P/N: OLO5
 NICOMATIC RECEPTACLES (PINS) MATTE TIN PLATED P/N: 14106-12
 HOUSING ORIENTED WITH LATCH DOWN

| PINOUT | |
|--------|------|
| 1 | LR |
| 2 | LL |
| 3 | SHLD |
| 4 | UL |
| 5 | UR |

UNITS INCHES [MM]

TOLERANCES UNLESS OTHERWISE SPECIFIED

.X ±
 .XX ±.03 [.76]
 .XXX ±.015 [.38]
 ANGLES ±1°

THIRD ANGLE PROJECTION

DO NOT SCALE DRAWING

SCALE 1 = 1

3M 3M TOUCH SYSTEMS
 METHUEN, MA
 USA

© COPYRIGHT 2004
 THIS DOCUMENT IS COPYRIGHTED PROPERTY OF THE 3M COMPANY AND MAY NOT BE REPRODUCED WITHOUT 3M WRITTEN PERMISSION OR USED OR DISCLOSED FOR OTHER THAN 3M AUTHORIZED PURPOSES.

DRAWN MDS 6/19/06

| REV | CHANGE NOTICE | DATE | DRW |
|-----|----------------------|------|-----|
| L | REVISE PER CO 036265 | 4/13 | SB |
| K | REVISE PER CO 036100 | 2/13 | SB |

TITLE

MARKETING DRAWING
 SCT32NN 19.42"

CAD FORMAT AUTOCAD SHEET 1 OF 1

SIZE C DOCUMENT NO. TSD-32144 REV L