



Chipsmall Limited consists of a professional team with an average of over 10 year of expertise in the distribution of electronic components. Based in Hongkong, we have already established firm and mutual-benefit business relationships with customers from,Europe,America and south Asia,supplying obsolete and hard-to-find components to meet their specific needs.

With the principle of “Quality Parts,Customers Priority,Honest Operation,and Considerate Service”,our business mainly focus on the distribution of electronic components. Line cards we deal with include Microchip,ALPS,ROHM,Xilinx,Pulse,ON,Everlight and Freescale. Main products comprise IC,Modules,Potentiometer,IC Socket,Relay,Connector.Our parts cover such applications as commercial,industrial, and automotives areas.

We are looking forward to setting up business relationship with you and hope to provide you with the best service and solution. Let us make a better world for our industry!



Contact us

Tel: +86-755-8981 8866 Fax: +86-755-8427 6832

Email & Skype: info@chipsmall.com Web: www.chipsmall.com

Address: A1208, Overseas Decoration Building, #122 Zhenhua RD., Futian, Shenzhen, China



OGA DIAGONAL: 34.19 [868.45]
 VA DIAGONAL: 32.39 [822.76]
 PA DIAGONAL: 30.53 [775.34]

TOP LEVEL NUMBER	US NUMBER	TYPE	DIM "A" (TOTAL GLASS TO CONNECTOR)	A/G FINISH	PROD SPEC
17-9121-205	98-0003-2693-8	FFC	8.00" [203.20]	AG500	23655
17-9121-226	98-0003-2962-7	USB R FW9	8.00" [203.20]	AG500	23655
17-9121-227	98-0003-2290-3	SER	8.00" [203.20]	AG500	23655
N/A	98-1100-0127-2	USB R	8.00" [203.20]	AG500	23655

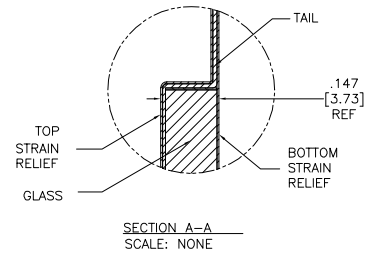
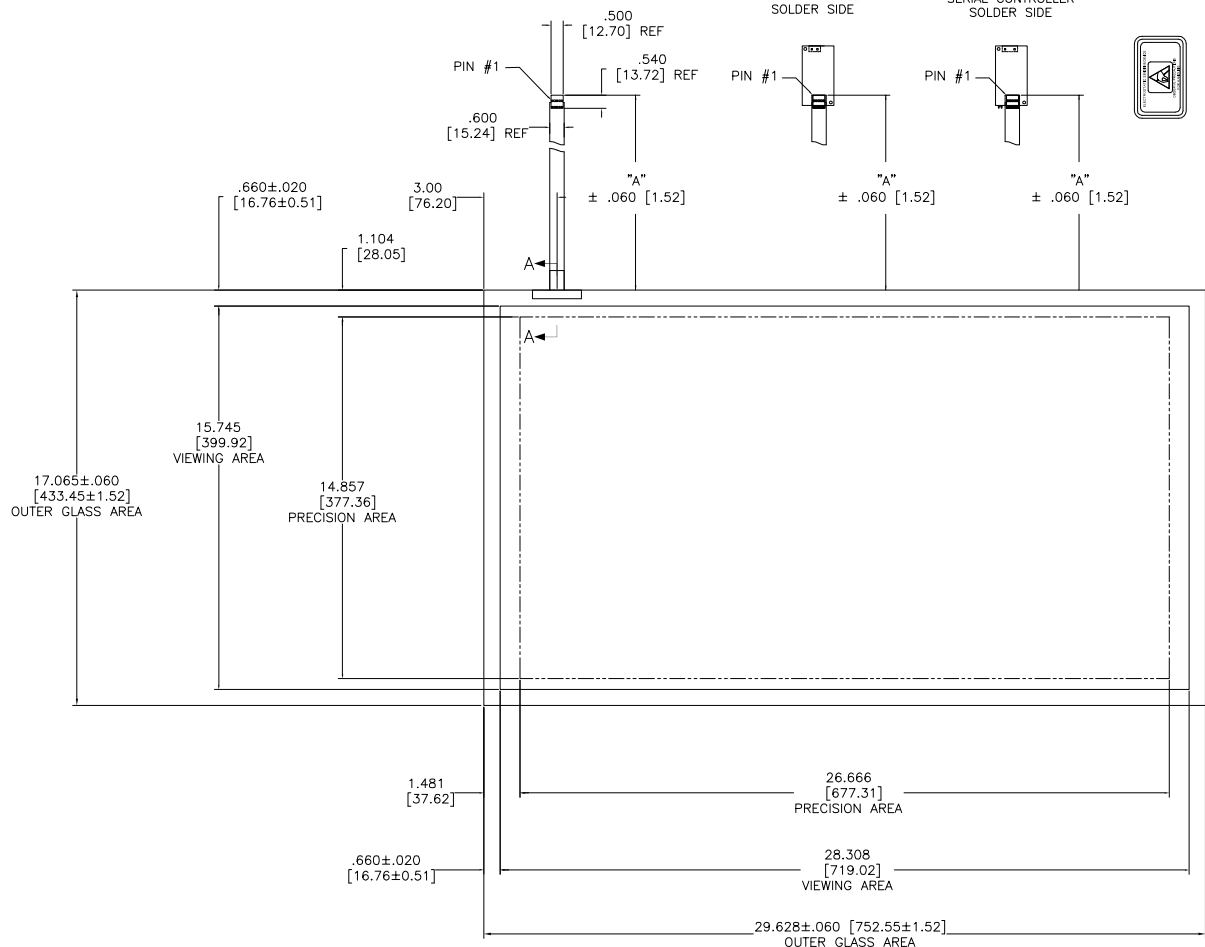
(USB R)
 EXII-7760UC
 98-0003-2814-0
 USB CONTROLLER
 SOLDER SIDE

(USB R FW9)
 EXII-7769UC
 98-0003-2815-7
 USB CONTROLLER
 SOLDER SIDE

(SER)
 EXII-7720SC
 98-0003-2217-6
 SERIAL CONTROLLER
 SOLDER SIDE



ESD CLAMSHELL CASE IS USED WITH ALL NOV, USB AND SER TERMINATIONS.



NOTES:
 1. WEIGHT OF GLASS IN GRAMS: 2485±10% HOUSING ORIENTED WITH LATCH DOWN

PINOUT	
1	LL
2	UL
3	SHLD
4	UR
5	LR

UNITS	INCHES [MM]
TOLERANCES UNLESS OTHERWISE SPECIFIED	
.X	± .03 [.76]
.XX	± .015 [.38]
.XXX	± .01 [.25]
ANGLES	±1°

3M 3M TOUCH SYSTEMS
 METHUEN, MA USA

© COPYRIGHT THIS DOCUMENT IS COPYRIGHTED PROPERTY OF THE 3M COMPANY AND MAY NOT BE REPRODUCED WITHOUT 3M WRITTEN PERMISSION OR USED OR DISCLOSED FOR OTHER THAN 3M AUTHORIZED PURPOSES.

THIRD ANGLE PROJECTION

DO NOT SCALE DRAWING

SCALE 1 = 1

REV	REVISION	DATE	BY
H	REVISE PER CO 036120	2/13	SB
CHANGE NOTICE		DATE	DRW

TITLE: **MARKETING DRAWING**
SCT32NN 32.39" W

DRAWN: AH 8/07 CAD FORMAT: AUTOCAD SHEET: 1 OF 1

SIZE: E DOCUMENT NO.: TSD-34642 REV: H