



Chipsmall Limited consists of a professional team with an average of over 10 year of expertise in the distribution of electronic components. Based in Hongkong, we have already established firm and mutual-benefit business relationships with customers from,Europe,America and south Asia,supplying obsolete and hard-to-find components to meet their specific needs.

With the principle of “Quality Parts,Customers Priority,Honest Operation,and Considerate Service”,our business mainly focus on the distribution of electronic components. Line cards we deal with include Microchip,ALPS,ROHM,Xilinx,Pulse,ON,Everlight and Freescale. Main products comprise IC,Modules,Potentiometer,IC Socket,Relay,Connector.Our parts cover such applications as commercial,industrial, and automotives areas.

We are looking forward to setting up business relationship with you and hope to provide you with the best service and solution. Let us make a better world for our industry!



Contact us

Tel: +86-755-8981 8866 Fax: +86-755-8427 6832

Email & Skype: info@chipsmall.com Web: www.chipsmall.com

Address: A1208, Overseas Decoration Building, #122 Zhenhua RD., Futian, Shenzhen, China



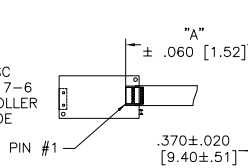
OGA DIAGONAL: 22.49 [571.22]
 VA DIAGONAL: 21.78 [553.26]
 PA DIAGONAL: 20.53 [521.37]

US NUMBER	TYPE	DIM "A" (TOTAL GLASS TO CONNECTOR)	A/G FINISH	PROD SPEC
98-0003-3807-3	SER	8.00" [203.20]	WC100	34523
98-0003-4003-8	USB R	8.00" [203.20]	WC100	34523
98-0003-4004-6	FFC	8.00" [203.20]	WC100	34523

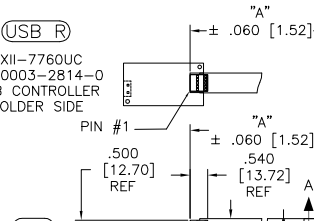


ESD CLAMSHELL CASE IS USED WITH ALL NOV, USB AND SER TERMINATIONS.

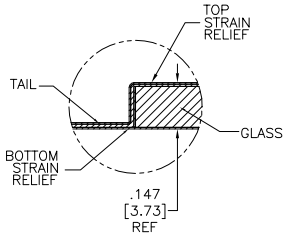
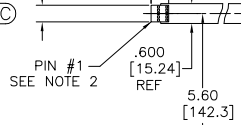
(SER)
 EXII-7720SC
 98-0003-2217-6
 SERIAL CONTROLLER
 SOLDER SIDE



(USB R)
 EXII-7760UC
 98-0003-2814-0
 USB CONTROLLER
 SOLDER SIDE

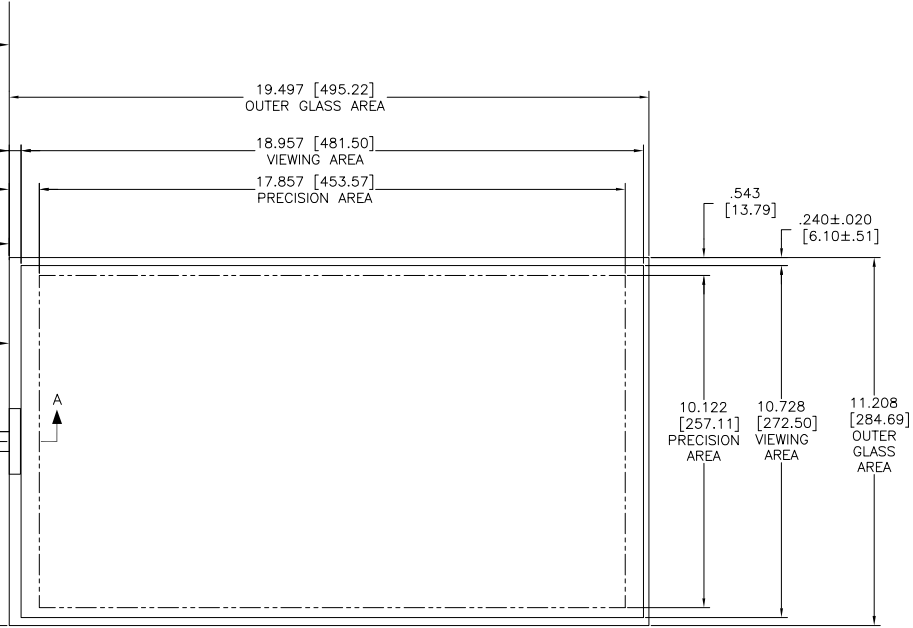


(FFC)



SECTION A-A
 SCALE: NONE

.147±.020 [3.73±.51]
 TOTAL THICKNESS
 OF GLASS, CABLE
 AND STRAIN RELIEF



10.122 [257.11] PRECISION AREA
 10.728 [272.50] VIEWING AREA
 11.208 [284.69] OUTER GLASS AREA

PINOUT	
1	LR
2	LL
3	SHLD
4	UL
5	UR

NOTES:

- WEIGHT OF GLASS IN GRAMS: 1119 ±10%
- NICOMATIC HOUSING P/N: 0L05
 NICOMATIC RECEPTACLES (PINS) MATTE TIN PLATED P/N: 14106-12
 HOUSING ORIENTED WITH LATCH DOWN

UNITS INCHES [MM]

TOLERANCES UNLESS OTHERWISE SPECIFIED
 .X ±
 .XX ±.03 [.76]
 .XXX ±.015 [.38]
 ANGLES ±1°

3M 3M TOUCH SYSTEMS
 METHUEN, MA USA
 © COPYRIGHT 2004
 THIS DOCUMENT IS COPYRIGHTED PROPERTY OF THE 3M COMPANY AND MAY NOT BE REPRODUCED WITHOUT 3M WRITTEN PERMISSION OR USED OR DISCLOSED FOR OTHER THAN 3M AUTHORIZED PURPOSES.



DO NOT SCALE DRAWING
 SCALE 1 = 1

DRAWN SB 6/1/11

CAD FORMAT AUTOCAD SHEET 1 OF 1

SIZE C DOCUMENT NO. TSD-40327 REV B

REV	CHANGE NOTICE	DATE	DRW
B	REVISE PER CO 034294	2/12	SB
A	RELEASE PER CO 033005	6/11	SB

TITLE
MARKETING DRAWING
SCT32NN 21.78" W