



Chipsmall Limited consists of a professional team with an average of over 10 year of expertise in the distribution of electronic components. Based in Hongkong, we have already established firm and mutual-benefit business relationships with customers from,Europe,America and south Asia,supplying obsolete and hard-to-find components to meet their specific needs.

With the principle of “Quality Parts,Customers Priority,Honest Operation,and Considerate Service”,our business mainly focus on the distribution of electronic components. Line cards we deal with include Microchip,ALPS,ROHM,Xilinx,Pulse,ON,Everlight and Freescale. Main products comprise IC,Modules,Potentiometer,IC Socket,Relay,Connector.Our parts cover such applications as commercial,industrial, and automotives areas.

We are looking forward to setting up business relationship with you and hope to provide you with the best service and solution. Let us make a better world for our industry!



Contact us

Tel: +86-755-8981 8866 Fax: +86-755-8427 6832

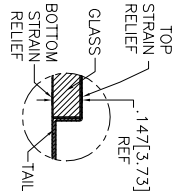
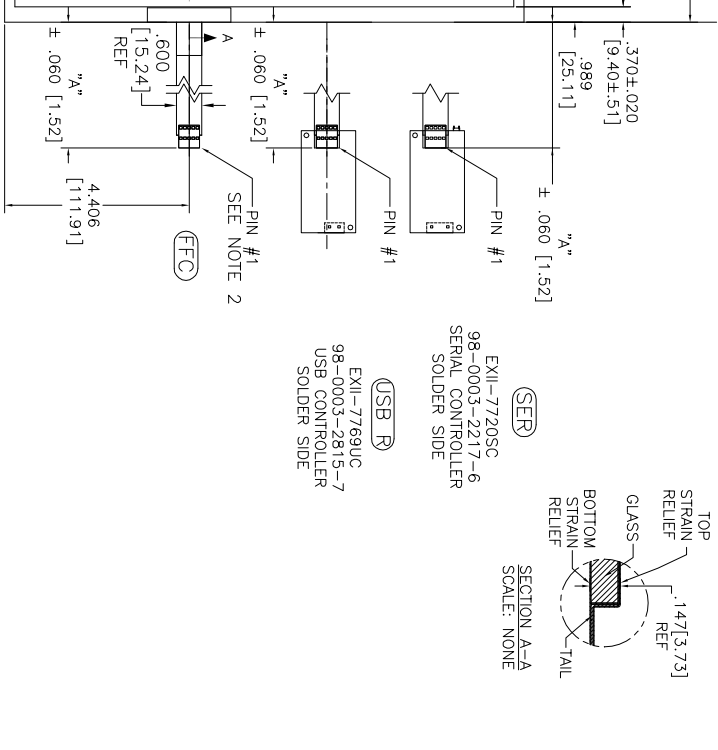
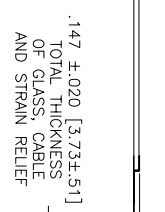
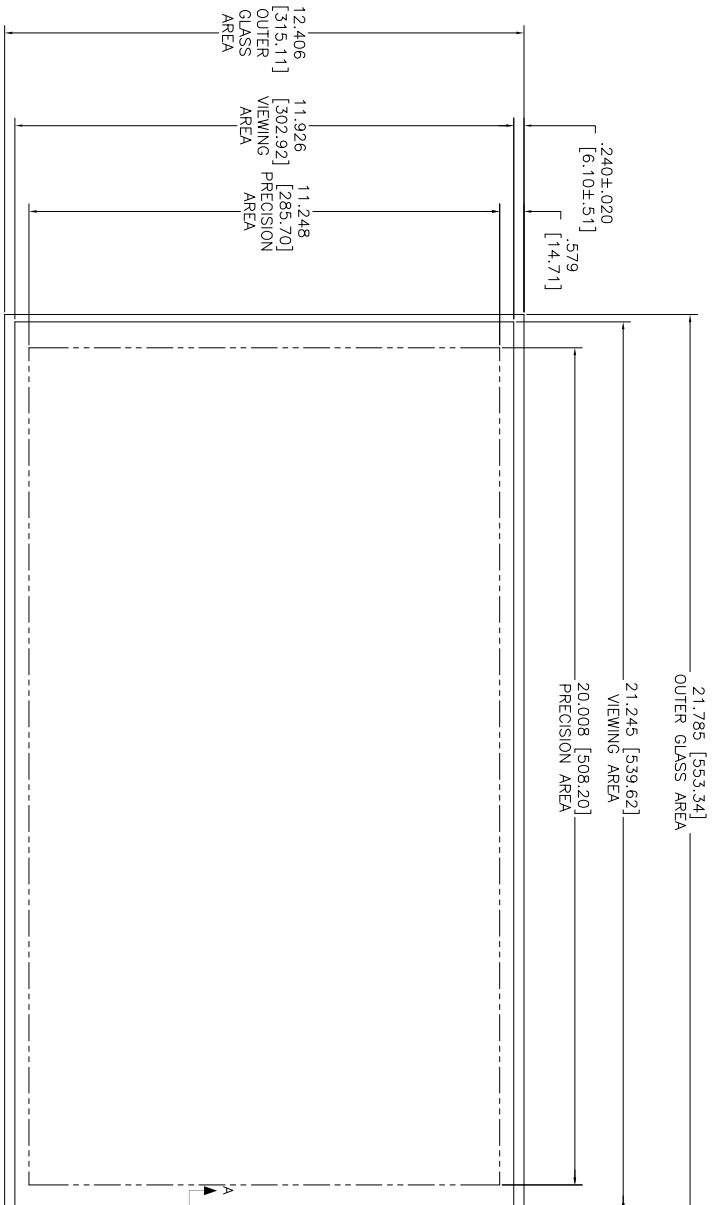
Email & Skype: info@chipsmall.com Web: www.chipsmall.com

Address: A1208, Overseas Decoration Building, #122 Zhenhua RD., Futian, Shenzhen, China



OGA DIAGONAL: 25.07 [636.77]
 VA DIAGONAL: 24.36 [618.83]
 PA DIAGONAL: 22.95 [583.00]

TOP LEVEL NUMBER	US NUMBER	TYPE	DM "A" (TOTAL GLASS TO CONNECTOR)	A/G FINISH	PROD SPEC
17-9011-226	98-0003-3794-1	USB R	8.00" [203.20]	AG500	23655
N/A	98-0003-3794-3	SER	8.00" [203.20]	WC100	34523
N/A	98-0003-3875-0	SER	8.00" [203.20]	AG500	23655
N/A	98-0003-3876-8	FFC	8.00" [203.20]	AG500	23655
N/A	98-0003-4215-8	USB R	8.00" [203.20]	WC100	34523
N/A	98-1100-0092-8	FFC	8.00" [203.20]	WC100	34523



(SER) EXII-7720SC
 98-0003-2217-6
 SERIAL CONTROLLER
 SOLDER SIDE

(USB R) EXII-7769UC
 98-0003-2815-7
 USB CONTROLLER
 SOLDER SIDE

ESD CLAMSHELL CASE
 IS USED WITH USB
 AND SER ERMINATIONS.



REV	DATE	BY	CHK	APP	DESCRIPTION
H	4/13	SB			REVISE PER CO 036296
G	2/13	SB			REVISE PER CO 036101
F	9/12	SB			REVISE PER CO 035430
REV	DATE	BY	CHK	APP	DESCRIPTION

MARKETING DRAWING
 SCT32NN 24.36" W

PINOUT	UNIT
1	UL
2	UR
3	SHLD
4	LR
5	LL

- NOTES:
1. WEIGHT OF GLASS IN GRAMS: 1384±10%
 2. NICOMATIC HOUSING P/N: OLO5
 3. NICOMATIC RECEPTACLES (PINS) MATTE TIN PLATED P/N: 14106-12
 - HOUSING ORIENTED WITH LATCH DOWN

UNITS: INCHES [MM]

TOLERANCES UNLESS OTHERWISE SPECIFIED

X ±.03 [.76]
 .XX ±.015 [.38]
 .XXX ±.015 [.38]
 ANGLES 4:1

THIS DOCUMENT IS THE PROPERTY OF 3M TOUCH SYSTEMS, INC., WAUSAU, WI, USA. IT IS TO BE USED ONLY FOR THE PROJECT AND FOR WHICH IT WAS PREPARED. NO OTHER USE OR REPRODUCTION IS PERMITTED WITHOUT THE WRITTEN PERMISSION OF 3M TOUCH SYSTEMS, INC.

DATE: 6/09

SCALE: 1 = 1

DO NOT SCALE DRAWING

3M TOUCH SYSTEMS, INC.
 WAUSAU, WI, USA

3M TOUCH SYSTEMS, INC.
 WAUSAU, WI, USA

MARKETING DRAWING
 SCT32NN 24.36" W

DOC NO: TSD-37090

REV: H