



Chipsmall Limited consists of a professional team with an average of over 10 year of expertise in the distribution of electronic components. Based in Hongkong, we have already established firm and mutual-benefit business relationships with customers from,Europe,America and south Asia,supplying obsolete and hard-to-find components to meet their specific needs.

With the principle of “Quality Parts,Customers Priority,Honest Operation,and Considerate Service”,our business mainly focus on the distribution of electronic components. Line cards we deal with include Microchip,ALPS,ROHM,Xilinx,Pulse,ON,Everlight and Freescale. Main products comprise IC,Modules,Potentiometer,IC Socket,Relay,Connector.Our parts cover such applications as commercial,industrial, and automotives areas.

We are looking forward to setting up business relationship with you and hope to provide you with the best service and solution. Let us make a better world for our industry!



Contact us

Tel: +86-755-8981 8866 Fax: +86-755-8427 6832

Email & Skype: info@chipsmall.com Web: www.chipsmall.com

Address: A1208, Overseas Decoration Building, #122 Zhenhua RD., Futian, Shenzhen, China





980 Series Ø 0.500" (12.7mm) Snap Mount Panel Mount Indicator Lights



980 Series non-relampable snap mount indicator lights feature molded plastic flex arms which ensure easy front panel installation into a 1/2" diameter hole.

Approval

REACH/RoHS/cURus

Specifications

Housing: White nylon (standard), black optional, other color available to special order.

Bezel: Sulfamate Nickel or Black Anodized standard. Clear anodized or gold iridite finish available to special order. Bezel are required on lens styles Type 94 (Flat Square) or Type 99 (Short Square). Bezels are optional on all other lens types.

Terminations: Wire leads: Black, # 18 gauge, PVC plastic insulated. UL-CSA rated at 105°C. 6" +/- 1/2" long, 1/2" stripped.

Terminals: Brass, Tin-plated. 3/16" quick-connect.

Incandescent AC or DC voltage options: 6 to 28 volts. High brightness Neon AC Voltage options: 125 to 250 volts. Blue or Green Neon AC or DC Voltage options: 125 to 250 volts.

Lens: Heat resistant, high strength polycarbonate.

Lens Marking: Flat lenses can be marked. Contact Technical Sales team or Customer Service.

Mounting: Designed to snap securely into a .500"/.510" diameter hole. Panel thickness ranges from .040" to .100".

Compliances and Approvals



Ordering Data

ORDERING INFORMATION:

EXAMPLE: **981 6 70 A 94 W AN**

Nickel Bezel

Wire Leads

125 Volt Neon Lamp

Built-In 22K OHM Resistor

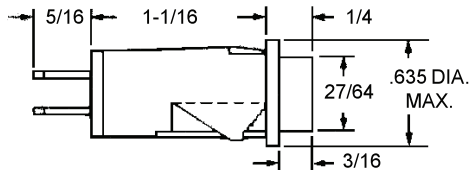
Flat Square Lens

White Housing

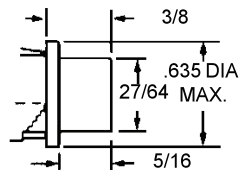
Amber Non-Diffusing Lens

| Series Number | Termination | Lamp (Incandescent) | | | | Resistor | Lens Type | Housing Color | Lens Color |
|--|----------------------------------|-------------------------------|--------|-------------------|------------|--|--|------------------------------|--------------------------------------|
| | | Code | Volts | MA | Life (Hrs) | | | | |
| 980 No Bezel | 6 6" Wire Leads | 03 | 14.0 | 80 | 15,000 | X None (No Resistor required with incandescent lamps) | 94⁵ Flat Square (Fresnel) | W White (Standard) | Nondiffusing (Clear) |
| 981 Nickel Bezel | 7 .187" Q.C. Terminals | 04 | 28.0 | 40 | 7,000 | | | | 95 Flat Cylindrical (Fresnel) |
| 982 Black Anodized Bezel | | NEON (High Brightness) | | | | A 22K OHM | 96 Short Cylindrical (Fresnel) | BN Blue | |
| | | 70² | 125 | 1/3 W | 10,000 | T 150K OHM | 97 Long Cylindrical (Fresnel) | CN Colorless | |
| | | 71² | 250 | 1/3 W | 10,000 | B 47K OHM | 98 Long Stovepipe (Fresnel) | GN Green | |
| | | 56³ | 125 | 1/3 W | 10,000 | E 100K OHM | 99⁵ Short Square (Fresnel) | RN Red | |
| | | 56³ | 250 | 1/3 W | 10,000 | B 30K OHM | | WN White (Cloudy) | |
| 57⁴ | 125 | 1/3 W | 10,000 | E 100K OHM | | YN Yellow | | | |
| 57⁴ | 250 | 1/3 W | 10,000 | | | | | | |
| ² Standard Neon. Use with lens colors AN, CN, RN, WN, or YN. ³ Green Neon. Use with lens colors CN, GN, or WN. ⁴ Blue Neon. Use with lens colors BN, CN, or WN. ⁵ Bezel Required. | | | | | | | | | |

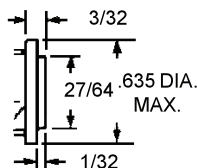
Product Dimensions



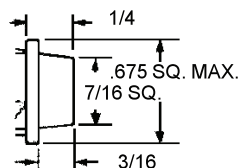
TYPE 96
SHORT CYLINDRICAL LENS



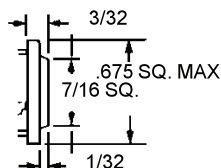
TYPE 97
LONG CYLINDRICAL LENS



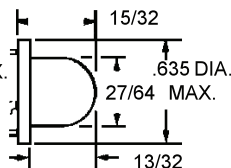
TYPE 95
FLAT CYLINDRICAL LENS



TYPE 99
SHORT SQUARE LENS



TYPE 94
FLAT SQUARE LENS



TYPE 98
LONG STOVEPIPE LENS