



Chipsmall Limited consists of a professional team with an average of over 10 year of expertise in the distribution of electronic components. Based in Hongkong, we have already established firm and mutual-benefit business relationships with customers from,Europe,America and south Asia,supplying obsolete and hard-to-find components to meet their specific needs.

With the principle of “Quality Parts,Customers Priority,Honest Operation,and Considerate Service”,our business mainly focus on the distribution of electronic components. Line cards we deal with include Microchip,ALPS,ROHM,Xilinx,Pulse,ON,Everlight and Freescale. Main products comprise IC,Modules,Potentiometer,IC Socket,Relay,Connector.Our parts cover such applications as commercial,industrial, and automotives areas.

We are looking forward to setting up business relationship with you and hope to provide you with the best service and solution. Let us make a better world for our industry!



## Contact us

Tel: +86-755-8981 8866 Fax: +86-755-8427 6832

Email & Skype: info@chipsmall.com Web: www.chipsmall.com

Address: A1208, Overseas Decoration Building, #122 Zhenhua RD., Futian, Shenzhen, China



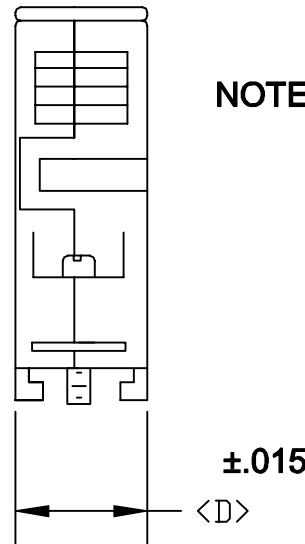
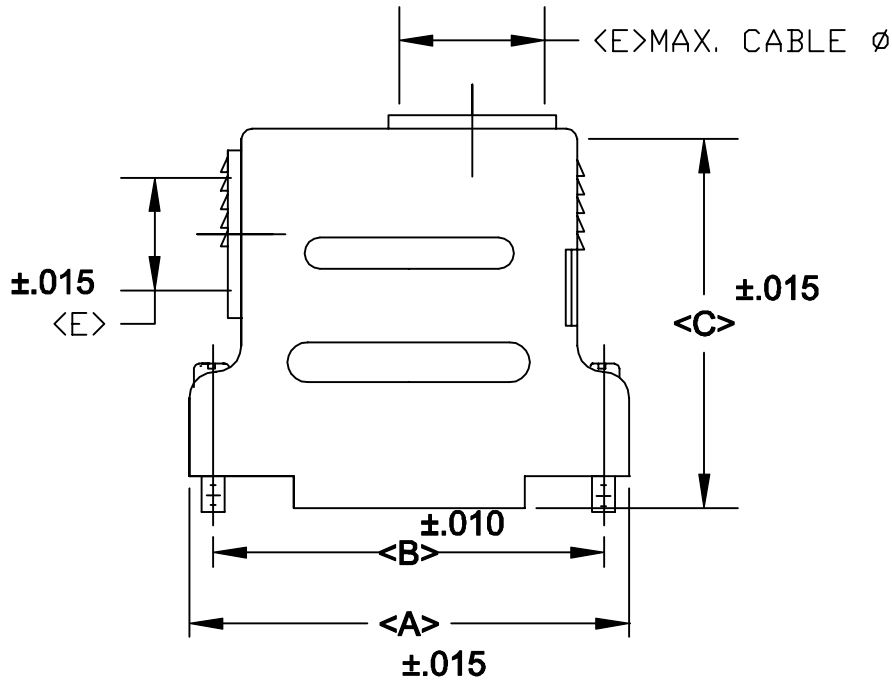
DESCRIPTION: **982 SERIES D-SUB BACKSHELL**

**BACKSHELL KIT INCLUDES:**

- (2) BACKSHELL HALVES
- (2) 4-40 MATING SCREWS
- (2) STRAIN RELIEF CLAMPS
- (2) STRAIN RELIEF SCREWS
- (1) CABLE SLOT SHUT-OFF
- (3) HOUSING SCREWS

982-XXX-XXX-XX1

SERIES \_\_\_\_\_  
 POSITIONS \_\_\_\_\_  
 009  
 015  
 025  
 037  
 050  
 MATERIAL \_\_\_\_\_  
 010 = PLASTIC  
 020 = METALIZED PLASTIC  
 COLOR: \_\_\_\_\_  
 03 = GREY  
 12 = NICKEL OVER COPPER  
 PUT-UPS \_\_\_\_\_  
 1 = KIT



NOTE: 9 POSITION DOES NOT HAVE 90 DEGREE ENTRY

POS.	A	B	C	D	E
9	1.230	.984	1.380	.630	.350
	31.24	24.99	35.05	16.00	8.89
15	1.560	1.312	1.610	.630	.374
	39.62	33.32	40.89	16.00	9.50
25	2.100	1.852	1.810	.630	.444
	53.34	47.04	45.97	16.00	11.18
37	2.740	2.500	1.810	.630	.444
	69.60	63.50	45.97	16.00	11.18
50	2.650	2.406	1.810	.735	.543
	67.31	61.00	45.97	18.67	13.79

**MATERIALS: THERMOPLASTIC  
 U.L.94V-0 (GREY)**

**METALIZED PLASTIC: NICKEL OVER COPPER**



THESE DRAWINGS AND SPECIFICATIONS ARE THE PROPERTY OF NorComp AND SHALL NOT BE REPRODUCED, COPIED OR USED AS THE BASIS FOR THE MANUFACTURE OR SALE OF APPARATUS WITHOUT WRITTEN PERMISSION.

DRAWN: **PAM JENKINS**

DATE: **10-11-99**

CHECKED:

DATE:

**NorComp**

SCALE \_\_\_\_\_ SHEET \_\_\_\_\_ OF \_\_\_\_\_ REV **4**

DWG NO. **982-XXX-010-031**