



Chipsmall Limited consists of a professional team with an average of over 10 year of expertise in the distribution of electronic components. Based in Hongkong, we have already established firm and mutual-benefit business relationships with customers from,Europe,America and south Asia,supplying obsolete and hard-to-find components to meet their specific needs.

With the principle of "Quality Parts,Customers Priority,Honest Operation,and Considerate Service",our business mainly focus on the distribution of electronic components. Line cards we deal with include Microchip,ALPS,ROHM,Xilinx,Pulse,ON,Everlight and Freescale. Main products comprise IC,Modules,Potentiometer,IC Socket,Relay,Connector.Our parts cover such applications as commercial,industrial, and automotives areas.

We are looking forward to setting up business relationship with you and hope to provide you with the best service and solution. Let us make a better world for our industry!



Contact us

Tel: +86-755-8981 8866 Fax: +86-755-8427 6832

Email & Skype: info@chipsmall.com Web: www.chipsmall.com

Address: A1208, Overseas Decoration Building, #122 Zhenhua RD., Futian, Shenzhen, China



BACKSHELL KIT INCLUDES:

- (2) BACKSHELL HALVES
- (2) 4-40 MATING SCREWS
- (2) STRAIN RELIEF CLAMPS
- (2) STRAIN RELIEF SCREWS
- (1) CABLE SLOT SHUT-OFF
- (3) HOUSING SCREWS

SERIES _____

POSITIONS _____

009

015

025

037

050

MATERIAL _____

010 = PLASTIC

020 = METALIZED PLASTIC

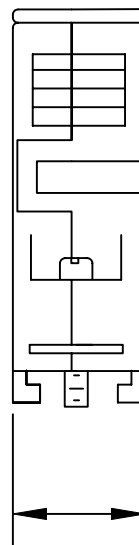
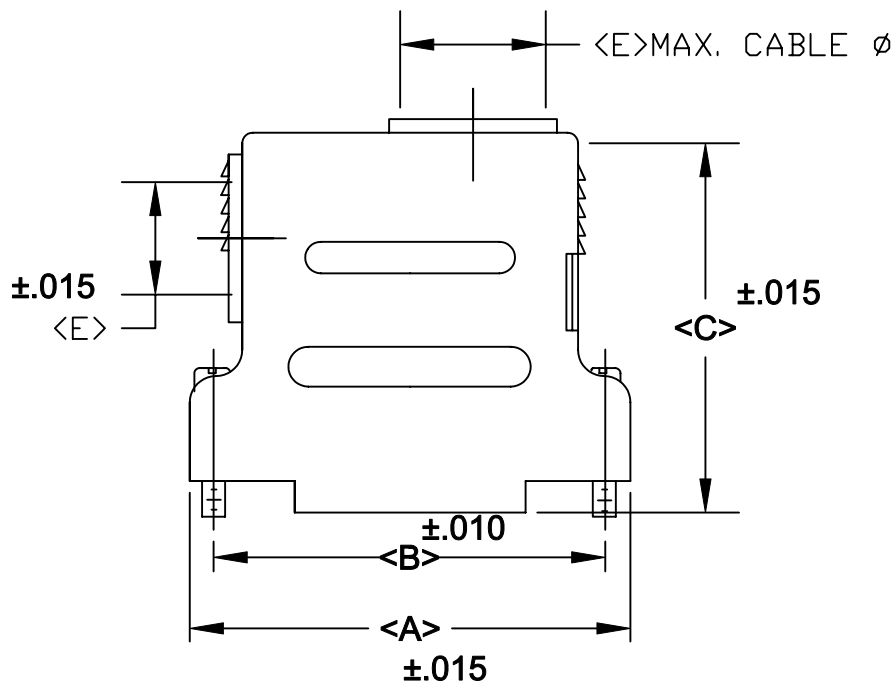
COLOR: _____

03 = GREY

12 = NICKEL OVER COPPER

PUT-UPS _____

1 = KIT



NOTE: 9 POSITION DOES NOT HAVE 90 DEGREE ENTRY AND HAS ONLY (1) STRAIN RELIEF CLAMP.

POS.	A	B	C	D	E
9	1.230	.984	1.380	.630	.350
	31.24	24.99	35.05	16.00	8.89
15	1.560	1.312	1.610	.630	.374
	39.62	33.32	40.89	16.00	9.50
25	2.100	1.852	1.810	.630	.444
	53.34	47.04	45.97	16.00	11.18
37	2.740	2.500	1.810	.630	.444
	69.60	63.50	45.97	16.00	11.18
50	2.650	2.406	1.810	.735	.543
	67.31	61.00	45.97	18.67	13.79

MATERIALS: THERMOPLASTIC
U.L.94V-0 (GREY)
OPERATING TEMP: -55° TO 140° C
METALIZED PLASTIC: NICKEL OVER COPPER

RoHS COMPLAINT

	THESE DRAWINGS AND SPECIFICATIONS ARE THE PROPERTY OF NorComp AND SHALL NOT BE REPRODUCED, COPIED OR USED AS THE BASIS FOR THE MANUFACTURE OR SALE OF APPARATUS WITHOUT WRITTEN PERMISSION.		DRAWN: PAM JENKINS	DATE: 3-8-06
			CHECKED:	DATE:
<h1>NorComp</h1>		SCALE	SHEET 1 OF 1	REV 3
		DWG NO. 982-YYY-0Y0RYY1		