



Chipsmall Limited consists of a professional team with an average of over 10 year of expertise in the distribution of electronic components. Based in Hongkong, we have already established firm and mutual-benefit business relationships with customers from,Europe,America and south Asia,supplying obsolete and hard-to-find components to meet their specific needs.

With the principle of “Quality Parts,Customers Priority,Honest Operation,and Considerate Service”,our business mainly focus on the distribution of electronic components. Line cards we deal with include Microchip,ALPS,ROHM,Xilinx,Pulse,ON,Everlight and Freescale. Main products comprise IC,Modules,Potentiometer,IC Socket,Relay,Connector.Our parts cover such applications as commercial,industrial, and automotives areas.

We are looking forward to setting up business relationship with you and hope to provide you with the best service and solution. Let us make a better world for our industry!



Contact us

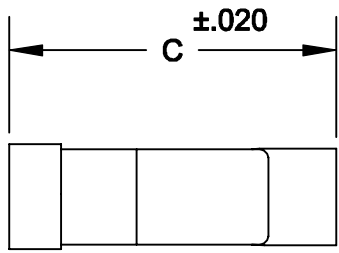
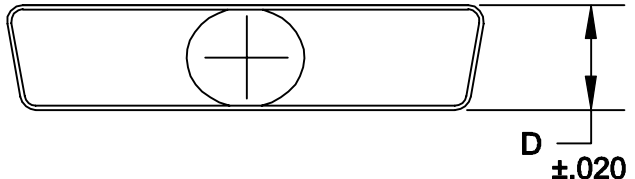
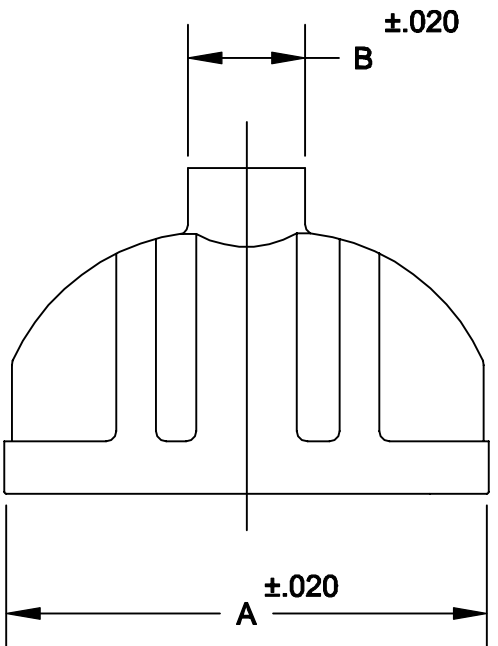
Tel: +86-755-8981 8866 Fax: +86-755-8427 6832

Email & Skype: info@chipsmall.com Web: www.chipsmall.com

Address: A1208, Overseas Decoration Building, #122 Zhenhua RD., Futian, Shenzhen, China



DESCRIPTION: 986 SERIES OVER-MOLD CANS



986-XXX-XXX-XX1

SERIES _____

POSITIONS _____

009 _____

015 _____

025 _____

037 _____

050 _____

MATERIAL _____

COLD ROLLED STEEL

PLATING: _____

12 = NICKEL

PUT-UPS _____

1 = KIT

	A	B	C	D	MAX. CABLE DIA.
9	.815	.410	1.200	.490	.375
	20.70	10.41	30.48	12.45	9.50
15	1.150	.410	1.200	.490	.375
	29.21	10.41	30.48	12.45	9.50
25	1.690	.410	1.200	.490	.375
	42.93	10.41	30.48	12.45	9.50
37	2.340	.610	1.650	.490	.575
	59.44	15.49	41.91	12.45	14.60
50	2.240	.580	1.650	.600	.575
	56.90	14.73	41.91	15.24	14.60

NOTE: WHEN USED WITH NORCOMP 170/171 SERIES CONNECTORS AND TOOLING, AN AXIAL PULL OF 35-40 LBS. CAN BE ACHIEVED.

MATERIAL: STEEL
PLATING: TIN

	THESE DRAWINGS AND SPECIFICATIONS ARE THE PROPERTY OF NorComp AND SHALL NOT BE REPRODUCED, COPIED OR USED AS THE BASIS FOR THE MANUFACTURE OF SALE OF APPARATUS WITHOUT WRITTEN PERMISSION.		DRAWN: WAYNE ROBBINS	DATE: 10-4-98	
	NorComp			CHECKED:	DATE:
SCALE: 1:1				SHEET 1 OF 1	REV 2
DWG NO. 986-XXX-020-121					