



Chipsmall Limited consists of a professional team with an average of over 10 year of expertise in the distribution of electronic components. Based in Hongkong, we have already established firm and mutual-benefit business relationships with customers from,Europe,America and south Asia,supplying obsolete and hard-to-find components to meet their specific needs.

With the principle of "Quality Parts,Customers Priority,Honest Operation,and Considerate Service",our business mainly focus on the distribution of electronic components. Line cards we deal with include Microchip,ALPS,ROHM,Xilinx,Pulse,ON,Everlight and Freescale. Main products comprise IC,Modules,Potentiometer,IC Socket,Relay,Connector.Our parts cover such applications as commercial,industrial, and automotives areas.

We are looking forward to setting up business relationship with you and hope to provide you with the best service and solution. Let us make a better world for our industry!



## Contact us

Tel: +86-755-8981 8866 Fax: +86-755-8427 6832

Email & Skype: [info@chipsmall.com](mailto:info@chipsmall.com) Web: [www.chipsmall.com](http://www.chipsmall.com)

Address: A1208, Overseas Decoration Building, #122 Zhenhua RD., Futian, Shenzhen, China



FD-55111-B

4

3

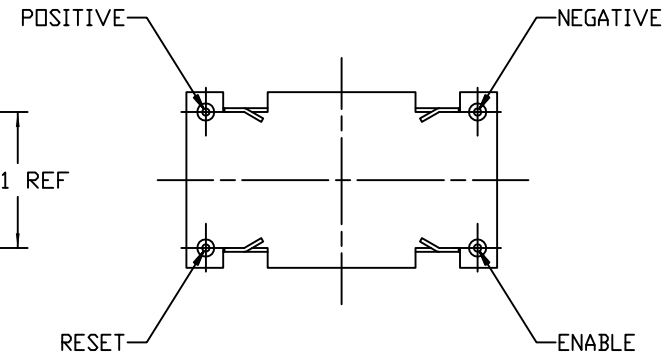
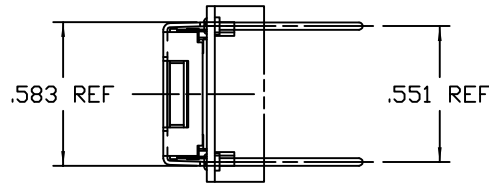
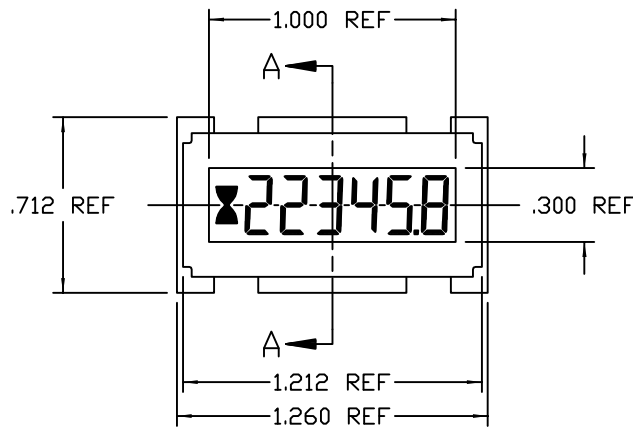
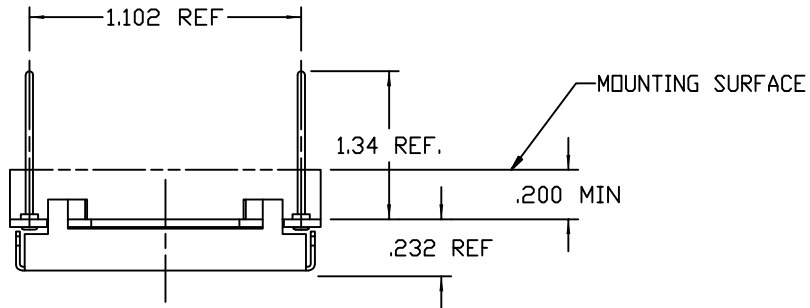
2

1

HONEYWELL  
PART NUMBER

98755

REV	DOCUMENT	CHANGED BY	CHECK
A	0019892	SK 29MAR06	AS



## NOTES:

- CAUTION, MODULE SUPPLIED WITH CRITICAL COMPONENTS EXPOSED. CUSTOMER MUST PROVIDE ADEQUATE PROTECTION FOR INTENDED APPLICATION.
- PRODUCT CONTENT MUST COMPLY WITH THE REQUIREMENTS OF THE CURRENT RoHS DIRECTIVE.

SIM. TD: 98750

CUSTOMER PRINT

DESIGN UNITS: INCH  
TOLERANCES UNLESS NOTED:

NO PLACE	X	±
ONE PLACE	.X	±
TWO PLACE	.XX	±
THREE PLACE	.XXX	±
FOUR PLACE	.XXXX	±
ANGLES	X	±

0.400
0.030
0.015
0.005
0.0005
3

THIRD ANGLE PROJECTION



DRAWN	SK	29MAR06
CHECK	AS	29MAR06

THIS DRAWING COVERS A PROPRIETARY ITEM  
AND IS THE PROPERTY OF HONEYWELL.  
THIS DRAWING IS NOT TO BE COPIED OR USED  
WITHOUT THE PERMISSION OF HONEYWELL.

INTERPRET PER ASME Y14.5M-1994  
OTHER HONEYWELL ENGINEERING  
STANDARDS MAY APPLY

AUTOCAD 2D

TITLE LCD HOURMETER MODULE  
W/ENABLE & RESET (9-64 V)

SIZE B	TYPE I	DRAWING NAME 98755	REV A
SCALE 2:1	SHEET 1 OF 1		

Sensing and Control  
**Honeywell**  
 PO Box 19424  
 Springfield, IL 62794-9424 USA

## 98000 SERIES LCD HOUR METER MODULE

FEATURES/SPECIFICATIONS	LCD MODULE 98755
RANGE	0 TO 99,999.9 hours
DIGIT HEIGHT	6 mm
RUNNING INDICATOR	FLASHING Hour Glass Icon
PIN	(Positive, Negative, Enable, Reset)
Memory	EEPROM (Non-volatile Memory)
ACCURACY Steady run (OVER VOLTAGE & TEMP. RANGE)	±200 ppm ; ± 0.02%
OPERATING VOLTAGE RANGES	9 to 64 V DC (RATED AT 12 V.)
TEMPERATURE RANGE Operating Storage	-40°C TO +80°C -40°C TO +85°C
VIBRATION (per MIL - M-3971D) (per SAE J1378)	10 g's 20 g's
SHOCK (per MIL - M-3971) (per SAE J1378)	75 g's 55 g's
TRANSIENT IMMUNITY TO	LOAD DUMP INDUCTIVE E M I REVERSE POLARITY
POWER CONSUMPTION 9 - 64 V meter (power terminal)	0.8 mA @ 12 V DC
START TIME 4 PIN (Enable line) configuration	No Delay
TERMINATION Pin	0.03 inch dia.
Copyright 2007 Honeywell International Inc.	