



Chipsmall Limited consists of a professional team with an average of over 10 year of expertise in the distribution of electronic components. Based in Hongkong, we have already established firm and mutual-benefit business relationships with customers from,Europe,America and south Asia,supplying obsolete and hard-to-find components to meet their specific needs.

With the principle of “Quality Parts,Customers Priority,Honest Operation,and Considerate Service”,our business mainly focus on the distribution of electronic components. Line cards we deal with include Microchip,ALPS,ROHM,Xilinx,Pulse,ON,Everlight and Freescale. Main products comprise IC,Modules,Potentiometer,IC Socket,Relay,Connector.Our parts cover such applications as commercial,industrial, and automotives areas.

We are looking forward to setting up business relationship with you and hope to provide you with the best service and solution. Let us make a better world for our industry!



Contact us

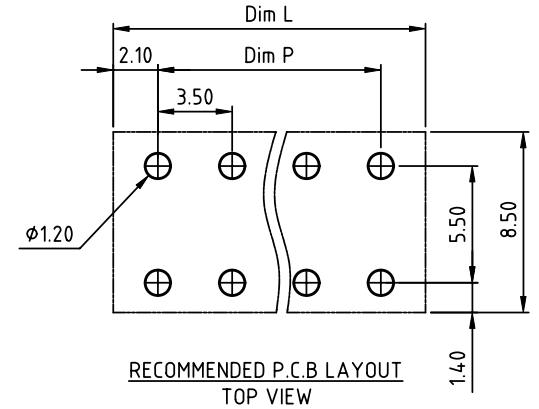
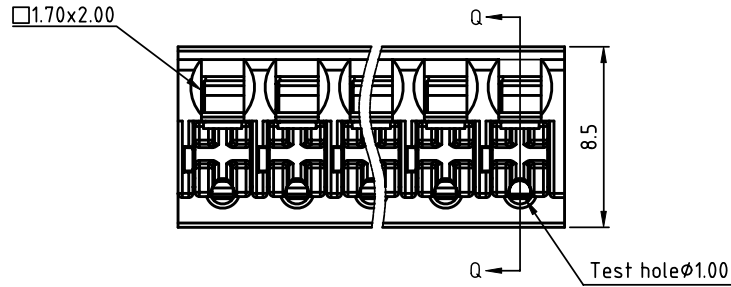
Tel: +86-755-8981 8866 Fax: +86-755-8427 6832

Email & Skype: info@chipsmall.com Web: www.chipsmall.com

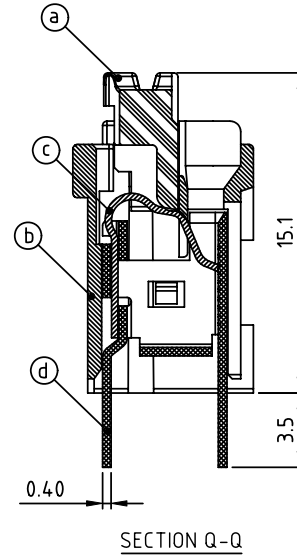
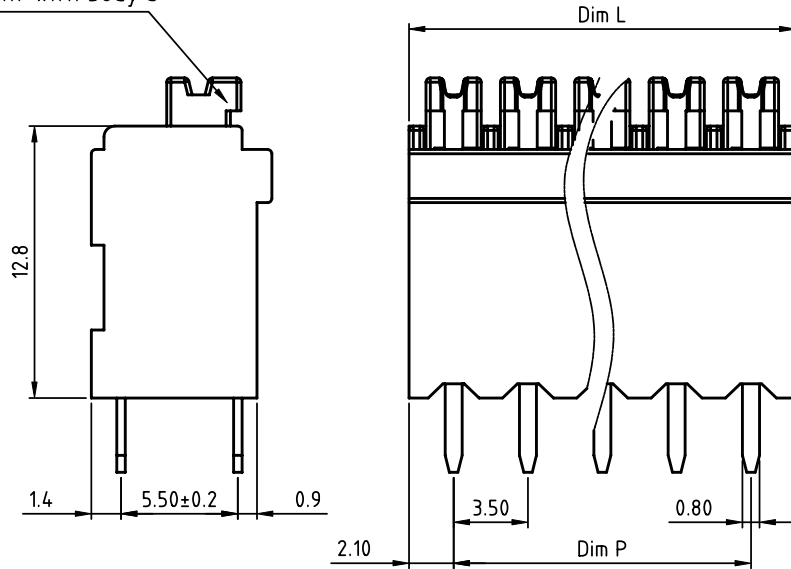
Address: A1208, Overseas Decoration Building, #122 Zhenhua RD., Futian, Shenzhen, China



PRODUCT NUMBER	PITCH
NMxx100000JOG	3.50mm



The color of lever is consistent with body's



Material:

- Item (a) Lever: Thermoplastic (UL94V-0)
- Item (b) Terminal housing: Thermoplastic (UL94V-0)
- Item (c) Spring clamp: Stainless steel
- Item (d) Solder Pin: Brass. Tin plated

Electrical:

- Voltage rating: 300 V
- Current rating(SOL): 7 A
- Current rating(STR): 10 A
- Wire range:
- Solid wire(AWG): 18-24
- Stranded wire(AWG): 16-22
- Wire strip length: 12-13 mm
- Withstanding Voltage: 1.6KV
- Operating temperature: -40°C to +110°C
- Reflow Soldering temperature: 260°C/10 Sec max
- Safety Approval:

N=Number of poles
 Dim L=N×3.5+0.70
 Dim P=(N-1)×3.5

Poles	Tolerance
2-6p	±0.15
7-12p	±0.20
13-18p	±0.30
19-24p	±0.40

PART NO.: NM xx 10 0 0 00J0 G

End stackable
 No. of poles
 02 2 poles
 03 3 poles

 24 24 poles

RoHS compliant
 (lead<4%)
 In copper Alloy

mat'l. code		surface ASME Y14.5 ✓	tolerance ASME Y14.5	projection	product family	
ltr ecn no dr date		tolerances unless otherwise specified			TERMINAL BLOCK	
angles		X.±0.5	X.X±0.3	MM	title	
X*±1*		X.XX±0.1		scale	TERMINAL BLOCK	
dr EVIN ZHONG 060614		enr EVIN ZHONG 060614			SPRING CLAMP, 90D WIRE INLET, THR	
chr HANKE FENG 060614		appd SHI JUN 060614			dwg no	sheet 1 of 1 size
sheet index		revision sheet 1			NMxx100000JOG	A4
					type	CUSTOMER Drawing