



Chipsmall Limited consists of a professional team with an average of over 10 year of expertise in the distribution of electronic components. Based in Hongkong, we have already established firm and mutual-benefit business relationships with customers from,Europe,America and south Asia,supplying obsolete and hard-to-find components to meet their specific needs.

With the principle of “Quality Parts,Customers Priority,Honest Operation,and Considerate Service”,our business mainly focus on the distribution of electronic components. Line cards we deal with include Microchip,ALPS,ROHM,Xilinx,Pulse,ON,Everlight and Freescale. Main products comprise IC,Modules,Potentiometer,IC Socket,Relay,Connector.Our parts cover such applications as commercial,industrial, and automotives areas.

We are looking forward to setting up business relationship with you and hope to provide you with the best service and solution. Let us make a better world for our industry!



Contact us

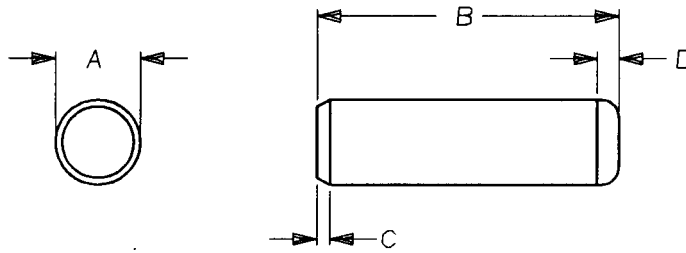
Tel: +86-755-8981 8866 Fax: +86-755-8427 6832

Email & Skype: info@chipsmall.com Web: www.chipsmall.com

Address: A1208, Overseas Decoration Building, #122 Zhenhua RD., Futian, Shenzhen, China



1. PART NUMBER AND CHARACTERISTICS



SEE ALSO 2030423 AND 2168312

TE Part No	Rev	A	B	C	D
992946-1	O	6	16	0.9	2.1
992946-2	O	3	16	0.45	1.1
992946-3	O	6	20	0.9	2.1
992946-4	O	6	45	0.9	2.1
992946-5	O	8	28	1.2	2.6
992946-6	O	4	10	0.6	1.4
992946-7	O	8	20	1.2	2.6
992946-8	O	8	24	1.2	2.6
992946-9	O	4	20	0.6	1.4
1-992946-0	O	6	30	0.9	2.1
1-992946-1	O	5	10	0.75	1.7
1-992946-2	O	6	14	0.9	2.1
1-992946-3	A	8	12	1.2	2.6
1-992946-4	A	3	8	0.45	1.1
1-992946-5	A	3	10	0.45	1.1
1-992946-6	B	6	28	0.9	2.1
1-992946-7	B	2	8	0.3	0.78
1-992946-8	B	2	18	0.3	0.78
1-992946-9	B	4	16	0.6	1.4
2-992946-0	B	5	12	0.75	1.7
2-992946-1	C	6	12	0.9	2.1
2-992946-2	D	10	35	1.5	3
2-992946-3	E	3	20	0.45	1.1
2-992946-4	E	3	24	0.45	1.1
2-992946-5	E	3	28	0.45	1.1

**COMMERCIALLY
PURCHASED PRODUCT
SPECIFICATION**

LOC B	MATERIAL High Grade Alloy Steel	FINISH -----
-----------------	------------------------------------	-----------------

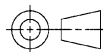


©2011 Tyco Electronics Corporation,
a TE Connectivity Ltd. Company
All Rights Reserved

DIMENSIONS IN
mm

TITLE

PIN, DOWEL, METRIC



SHEET
1 OF 3

NO

992946

REV
AK

AK	Add new reference drawing	JNB	07JUN11
REV	ENGINEERING CHANGE	CHK	DATE

1. PART NUMBER AND CHARACTERISTICS (Continued)

TE Part No	Rev	A	B	C	D
2-992946-6	E	10	25	1.5	3
2-992946-7	F	3	60	0.45	1.1
2-992946-8	G	3	6	0.45	1.1
2-992946-9	G	5	32	0.75	1.7
3-992946-0	H	3	14	0.45	1.1
3-992946-1	H	2.5	12	0.4	0.95
3-992946-2	J	5	16	0.75	1.7
3-992946-3	K	8	16	1.2	2.6
3-992946-4	L	5	40	0.75	1.7
3-992946-5	M	1.5	20	0.23	0.62
3-992946-6	N	4	6	0.6	1.4
3-992946-7	P	5	28	0.75	1.7
3-992946-8	R	8	34	1.2	2.6
3-992946-9	S	2	12	0.3	0.78
4-992946-0	T	5	22	0.75	1.7
4-992946-1	U	10	50	1.5	3
4-992946-2	V	8	120	1.2	2.6
4-992946-3	V	2.5	24	0.4	0.95
4-992946-4	W	10	18	1.5	3
4-992946-5	Y	5	18	0.75	1.7
4-992946-6	Z	1.5	8	0.23	0.62
4-992946-7	Z	1.5	10	0.23	0.62
4-992946-8	AB	2	6	0.3	0.78
4-992946-9	AC	1.5	6	0.23	0.62
5-992946-0	AD	4	40	0.6	1.4
5-992946-1	AE	2.5	16	0.4	0.95
5-992946-2	AF	2	10	0.3	0.78
5-992946-3	AG	Superseded by 4-992946-9			
5-992946-4	AG	Superseded by 4-992946-6			
5-992946-5	AG	Superseded by 4-992946-7			
5-992946-6	AG	1.5	12	0.23	0.62
5-992946-7	AG	1.5	14	0.23	0.62
5-992946-8	AG	2	14	0.3	0.78
5-992946-9	AG	2	16	0.3	0.78
6-992946-0	AG	2	20	0.3	0.78
6-992946-1	AG	2	24	0.3	0.78
6-992946-2	AG	2	30	0.3	0.78
6-992946-3	AG	2	32	0.3	0.78
6-992946-4	AG	2.5	6	0.4	0.95
6-992946-5	AG	2.5	8	0.4	0.95



1. PART NUMBER AND CHARACTERISTICS (Continued)

TE Part No	Rev	A	B	C	D
6-992946-6	AG	2.5	10	0.4	0.95
6-992946-7	AG	2.5	18	0.4	0.95
6-992946-8	AG	2.5	20	0.4	0.95
6-992946-9	AG	2.5	22	0.4	0.95
7-992946-0	AG	2.5	30	0.4	0.95
7-992946-1	AG	3	12	0.45	1.1
7-992946-2	AG	3	18	0.45	1.1
7-992946-3	AG	3	22	0.45	1.1
7-992946-4	AG	3	26	0.45	1.1
7-992946-5	AG	3	30	0.45	1.1
7-992946-6	AG	3	32	0.45	1.1
7-992946-7	AG	3	36	0.45	1.1
7-992946-8	AG	3	40	0.45	1.1
7-992946-9	AG	3	50	0.45	1.1
8-992946-0	AG	4	8	0.6	1.4
8-992946-1	AG	4	12	0.6	1.4
8-992946-2	AG	4	14	0.6	1.4
8-992946-3	AG	4	18	0.6	1.4
8-992946-4	AG	4	22	0.6	1.4
8-992946-5	AG	4	24	0.6	1.4
8-992946-6	AG	4	26	0.6	1.4
8-992946-7	AG	4	28	0.6	1.4
8-992946-8	AG	4	30	0.6	1.4
8-992946-9	AG	4	32	0.6	1.4
9-992946-0	AG	4	36	0.6	1.4
9-992946-1	AG	4	50	0.6	1.4
9-992946-2	AG	5	8	0.75	1.7
9-992946-3	AG	5	14	0.75	1.7
9-992946-4	AG	5	20	0.75	1.7
9-992946-5	AG	5	24	0.75	1.7
9-992946-6	AG	5	26	0.75	1.7
9-992946-7	AG	5	30	0.75	1.7
9-992946-8	AG	5	36	0.75	1.7
9-992946-9	AG	5	45	0.75	1.7

- 1.1. Hardness: Rockwell C60 min (surface)
Rockwell C50-58 (core)
- 1.2. Shall comply with ISO 8734 (DIN 6325 m6)
- 1.3. Surface texture: 0.2 micrometer max
- 2. MANUFACTURER
None

