



Chipsmall Limited consists of a professional team with an average of over 10 year of expertise in the distribution of electronic components. Based in Hongkong, we have already established firm and mutual-benefit business relationships with customers from,Europe,America and south Asia,supplying obsolete and hard-to-find components to meet their specific needs.

With the principle of “Quality Parts,Customers Priority,Honest Operation,and Considerate Service”,our business mainly focus on the distribution of electronic components. Line cards we deal with include Microchip,ALPS,ROHM,Xilinx,Pulse,ON,Everlight and Freescale. Main products comprise IC,Modules,Potentiometer,IC Socket,Relay,Connector.Our parts cover such applications as commercial,industrial, and automotives areas.

We are looking forward to setting up business relationship with you and hope to provide you with the best service and solution. Let us make a better world for our industry!



Contact us

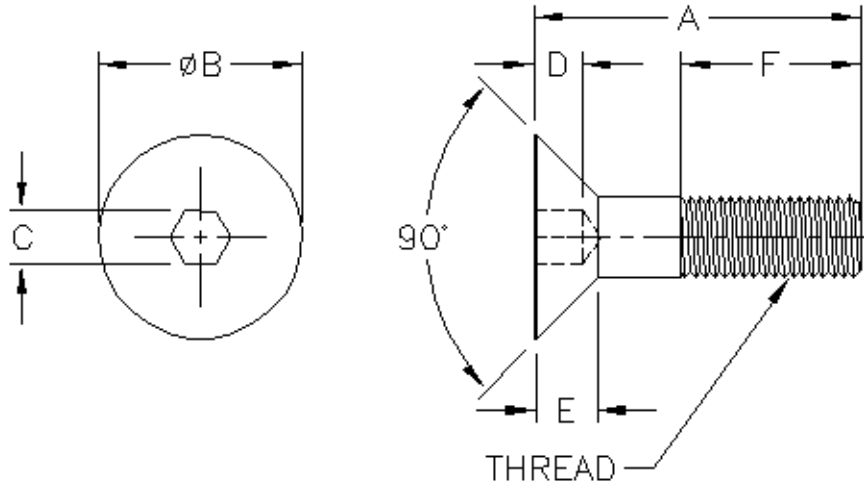
Tel: +86-755-8981 8866 Fax: +86-755-8427 6832

Email & Skype: info@chipsmall.com Web: www.chipsmall.com

Address: A1208, Overseas Decoration Building, #122 Zhenhua RD., Futian, Shenzhen, China


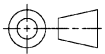


1. PART NUMBER AND CHARACTERISTICS



SEE ALSO 985575

| TE Part No | Rev | Thread | A | B | C | D | E | F |
|------------|-----|--------|----|----|-----|------|-----|------|
| 994236-1 | O | M4 | 6 | 8 | 2.5 | 1.8 | 2.3 | Full |
| 994236-2 | A | M2 | 4 | 4 | 1.3 | 0.75 | 1.2 | Full |
| 994236-3 | B | M2 | 8 | 4 | 1.3 | 0.75 | 1.2 | Full |
| 994236-4 | C | M4 | 14 | 8 | 2.5 | 1.8 | 2.3 | Full |
| 994236-5 | D | M2.5 | 6 | 5 | 1.5 | 0.8 | 1.5 | Full |
| 994236-6 | D | M2.5 | 8 | 5 | 1.5 | 0.8 | 1.5 | Full |
| 994236-7 | D | M2.5 | 10 | 5 | 1.5 | 0.8 | 1.5 | Full |
| 994236-8 | D | M2.5 | 12 | 5 | 1.5 | 0.8 | 1.5 | Full |
| 994236-9 | D | M2.5 | 16 | 5 | 1.5 | 0.8 | 1.5 | Full |
| 1-994236-0 | E | M2 | 6 | 4 | 1.3 | 0.75 | 1.2 | Full |
| 1-994236-1 | F | M10 | 25 | 20 | 6 | 4.4 | 5.5 | Full |
| 1-994236-2 | F | M2 | 5 | 4 | 1.3 | 0.75 | 1.2 | Full |
| 1-994236-3 | F | M3 | 10 | 6 | 2 | 1.2 | 1.7 | Full |
| 1-994236-4 | F | M4 | 10 | 8 | 2.5 | 1.8 | 2.3 | Full |
| 1-994236-5 | F | M4 | 12 | 8 | 2.5 | 1.8 | 2.3 | Full |
| 1-994236-6 | F | M4 | 16 | 8 | 2.5 | 1.8 | 2.3 | Full |
| 1-994236-7 | F | M4 | 8 | 8 | 2.5 | 1.8 | 2.3 | Full |
| 1-994236-8 | F | M5 | 10 | 10 | 3 | 2.3 | 2.8 | Full |
| 1-994236-9 | F | M5 | 12 | 10 | 3 | 2.3 | 2.8 | Full |
| 2-994236-0 | F | M5 | 16 | 10 | 3 | 2.3 | 2.8 | Full |

| | | | | | | |
|---|-------------------------|-----|---------|---|---|-----------------------|
| <h1>COMMERCIALLY PURCHASED PRODUCT SPECIFICATION</h1> | | | | LOC B | MATERIAL See Note 1.2. | FINISH Black Oxide |
| | | | |  <p>©2011 Tyco Electronics Corporation, a TE Connectivity Ltd. Company All Rights Reserved</p> | | |
| | | | | DIMENSIONS IN mm | <h2>SCREW, CAP, HEX SOCKET FLAT HEAD</h2> | |
| | | | |  | | |
| L | Change Full Thread Info | JNB | 21MAR11 | SHEET 1 OF 2 | NO 994236 | REV L |
| REV | ENGINEERING CHANGE | CHK | DATE | | | |

1. PART NUMBER AND CHARACTERISTICS (Continued)

| TE Part No | Rev | Thread | A | B | C | D | E | F |
|------------|-----|--------|----|----|---|-----|-----|------|
| 2-994236-1 | F | M5 | 55 | 10 | 3 | 2.3 | 2.8 | 16 |
| 2-994236-2 | F | M6 | 15 | 12 | 4 | 2.5 | 3.3 | Full |
| 2-994236-3 | F | M6 | 16 | 12 | 4 | 2.5 | 3.3 | Full |
| 2-994236-4 | F | M6 | 20 | 12 | 4 | 2.5 | 3.3 | Full |
| 2-994236-5 | F | M8 | 16 | 16 | 5 | 3.5 | 4.4 | Full |
| 2-994236-6 | F | M8 | 20 | 16 | 5 | 3.5 | 4.4 | Full |
| 2-994236-7 | J | M5 | 60 | 10 | 3 | 2.3 | 2.8 | 16 |
| 2-994236-8 | K | M5 | 60 | 10 | 3 | 2.3 | 2.8 | Full |

- 1.1. Shall comply with DIN 7991
- 1.2. Material shall be steel that meets or exceeds ISO Standard 898/1, Class 10.9
- 2. MANUFACTURER
None



Tyco Electronics Corporation,
a TE Connectivity Ltd. Company

SHEET
2 OF 2

NO

994236

REV
L