



Chipsmall Limited consists of a professional team with an average of over 10 year of expertise in the distribution of electronic components. Based in Hongkong, we have already established firm and mutual-benefit business relationships with customers from,Europe,America and south Asia,supplying obsolete and hard-to-find components to meet their specific needs.

With the principle of “Quality Parts,Customers Priority,Honest Operation,and Considerate Service”,our business mainly focus on the distribution of electronic components. Line cards we deal with include Microchip,ALPS,ROHM,Xilinx,Pulse,ON,Everlight and Freescale. Main products comprise IC,Modules,Potentiometer,IC Socket,Relay,Connector.Our parts cover such applications as commercial,industrial, and automotives areas.

We are looking forward to setting up business relationship with you and hope to provide you with the best service and solution. Let us make a better world for our industry!



## Contact us

Tel: +86-755-8981 8866 Fax: +86-755-8427 6832

Email & Skype: info@chipsmall.com Web: www.chipsmall.com

Address: A1208, Overseas Decoration Building, #122 Zhenhua RD., Futian, Shenzhen, China





# CONCEALED HINGE



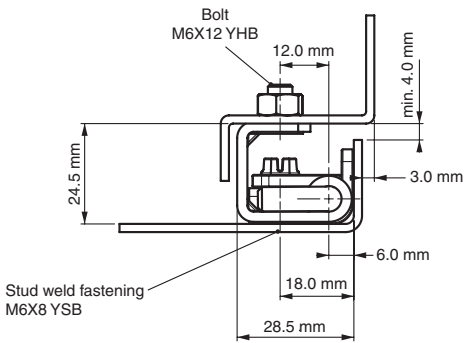
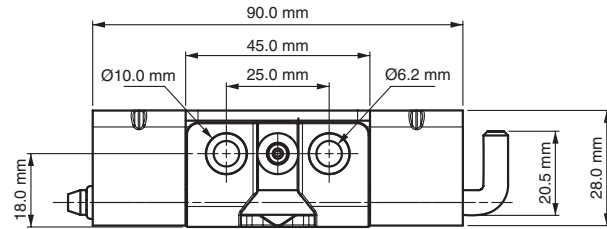
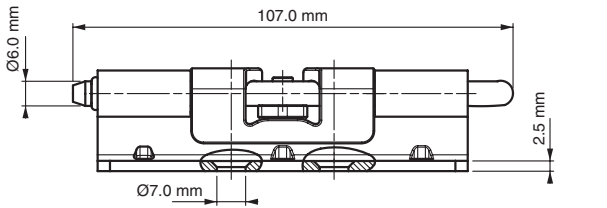
### Specifications

- Material:
  - Body: Steel
  - Welding Part: Zinc Alloy (Zamak) DIN-EN 1774-ZnAl4Cu1
- Finish:
  - Body: Zinc plated
  - Welding Part: Zinc plated

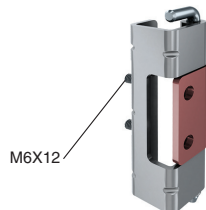
### Features

- Suitable for heavy-duty applications
- Suitable for Left- and right-hand applications
- Suitable for 25 mm bend door enclosures
- Door part can be removed
- Applications: Electric panels, machinery covers

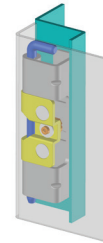
Version 2



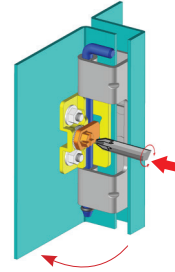
Stud version



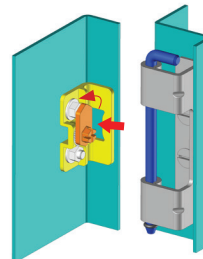
Position 1 - Closed door



Position 2 - After the door is opened, cam is rotated 90° with a screwdriver



Position 3 - The cover is removed



### Hinge Rotation Angle



Note: Nuts are not supplied

| Item Number | Hinge Rotation | Material | Finish | Version | Stud |
|-------------|----------------|----------|--------|---------|------|
| 9956320     | 110°           | Steel    | Zinc   | 2       | No   |
| 9956321     | 110°           | Steel    | Zinc   | 2       | Yes  |