



Chipsmall Limited consists of a professional team with an average of over 10 year of expertise in the distribution of electronic components. Based in Hongkong, we have already established firm and mutual-benefit business relationships with customers from,Europe,America and south Asia,supplying obsolete and hard-to-find components to meet their specific needs.

With the principle of "Quality Parts,Customers Priority,Honest Operation,and Considerate Service",our business mainly focus on the distribution of electronic components. Line cards we deal with include Microchip,ALPS,ROHM,Xilinx,Pulse,ON,Everlight and Freescale. Main products comprise IC,Modules,Potentiometer,IC Socket,Relay,Connector.Our parts cover such applications as commercial,industrial, and automotives areas.

We are looking forward to setting up business relationship with you and hope to provide you with the best service and solution. Let us make a better world for our industry!



## Contact us

Tel: +86-755-8981 8866 Fax: +86-755-8427 6832

Email & Skype: info@chipsmall.com Web: www.chipsmall.com

Address: A1208, Overseas Decoration Building, #122 Zhenhua RD., Futian, Shenzhen, China





# CONCEALED HINGE



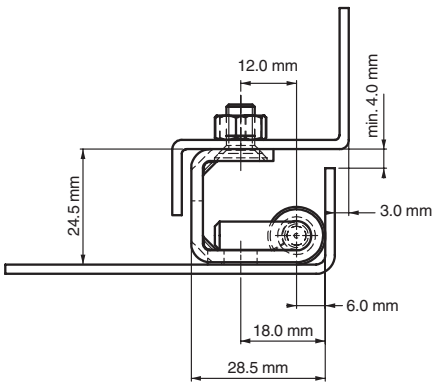
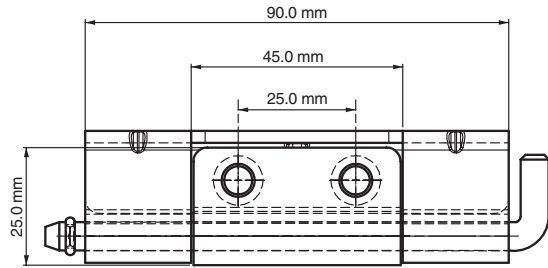
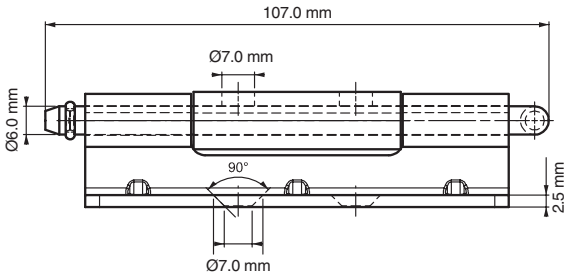
**Note: Nuts are not supplied**

**Specifications**

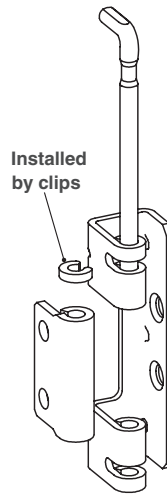
- Material: Steel
- Finish:
  - Body: Zinc plated
  - Welding Part: Copper plated

**Features**

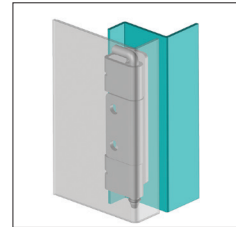
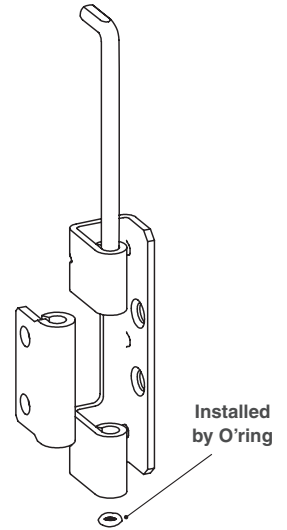
- Side part can be mounted with M5 screws
- Center part copper plated for easy welding
- Suitable for heavy-duty applications
- Suitable for 25 mm bend door enclosures
- Applications: Electric panels, machinery covers



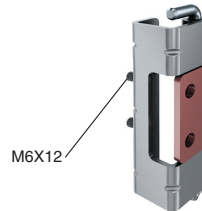
**Version 4**



**Version 3**



**Stud version**



**Hinge Rotation Angle**



Item Number	Hinge Rotation	Material	Finish	Version	Stud
9956330	110°	Steel	Zinc	3	No
9956331	110°	Steel	Zinc	3	Yes
9956340	110°	Steel	Zinc	4	No
9956341	110°	Steel	Zinc	4	Yes