



Chipsmall Limited consists of a professional team with an average of over 10 year of expertise in the distribution of electronic components. Based in Hongkong, we have already established firm and mutual-benefit business relationships with customers from,Europe,America and south Asia,supplying obsolete and hard-to-find components to meet their specific needs.

With the principle of “Quality Parts,Customers Priority,Honest Operation,and Considerate Service”,our business mainly focus on the distribution of electronic components. Line cards we deal with include Microchip,ALPS,ROHM,Xilinx,Pulse,ON,Everlight and Freescale. Main products comprise IC,Modules,Potentiometer,IC Socket,Relay,Connector.Our parts cover such applications as commercial,industrial, and automotives areas.

We are looking forward to setting up business relationship with you and hope to provide you with the best service and solution. Let us make a better world for our industry!



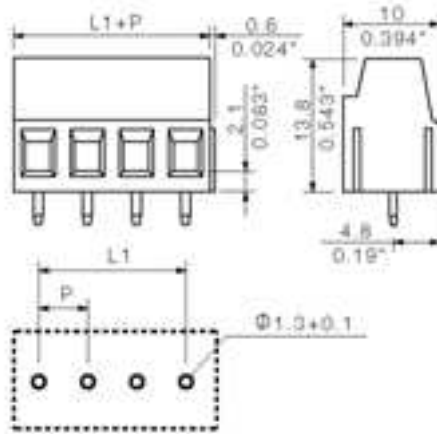
## Contact us

Tel: +86-755-8981 8866 Fax: +86-755-8427 6832

Email & Skype: info@chipsmall.com Web: www.chipsmall.com

Address: A1208, Overseas Decoration Building, #122 Zhenhua RD., Futian, Shenzhen, China





#### General ordering data

Order No.	9993300000
Part designation	LM5.00/4/90 3.5 SW
Version	PCB terminal, Clamping yoke connection, Soldered connection, Clamping range, max.: 2.5 mm <sup>2</sup> , Pitch: 5.00 mm, No. of poles: 4, 90°, Box
EAN	4032248375004
Qty.	50 pc(s).

#### System parameters

Product family	System LM
Conductor connection system	Clamping yoke connection
Fitted to PCB	Soldered connection
Outgoing direction of conductor	90°
Pitch	5 mm
Pitch in inch	0.197 inch
No. of poles	4
Fitted by customer	yes
Max. adjacent poles per row	24
No. of rows	1
Solder pin length	3.5 mm
Dia. of fitting hole	1.3 mm
Fitting hole tolerance	+ 0.1 mm
No. of solder pins per pole	1

#### System parameters

Screwdriver blade	0.6 x 3.5
Screwdriver blade standard	DIN 5264
Tightening torque, min.	0.4 Nm
Tightening torque, max.	0.5 Nm
Clamping screw	M 2.5
Stripping length	6 mm
L1 in mm	15 mm
L1 in inch	0.591 inch
Electric shock protection to DIN VDE 0470	IP 20
Electric shock protection to DIN VDE 0470	Safe from finger touch

#### Material data

Insulating material	Wemid (PA)
Colour	black
colour chart	Similar to RAL 9011
Insulating material group	I
Flammability class UL 94	V-0
CTI	>= 600
Temperature of glow-wire test	750 °C
Duration of glow-wire test	30 S
Contact base material	Copper alloy
Contact surface	tinned
Storage temperature, min.	-25 °C
Storage temperature, max.	55 °C

#### Connectable conductors

Clamping range, min.	0.2 mm <sup>2</sup>
Clamping range, max.	2.5 mm <sup>2</sup>
AWG, min.	24
AWG, max.	14
O.D. of conductor insulation, max.	2.9 mm
Solid, min. H05(07) V-U	0.2 mm <sup>2</sup>
Solid, max. H05(07) V-U	2.5 mm <sup>2</sup>
Flexible, min. H05(07) V-K	0.2 mm <sup>2</sup>
Flexible, max. H05(07) V-K	1.5 mm <sup>2</sup>
With wire end ferrule, acc. to DIN 46 228/1, min.	0.25 mm <sup>2</sup>
With wire end ferrule, acc. to DIN 46 228/1, max.	1.5 mm <sup>2</sup>
w. plastic collar ferrule, DIN 46228 pt 4, min.	0.25 mm <sup>2</sup>
w. plastic collar ferrule, DIN 46228 pt 4, max.	1.5 mm <sup>2</sup>
Gauge to EN 60999 a x b; ø	2.4 mm x 1.5 mm; 1.9mm

#### DIN IEC rating data

Rated current, min. No. pins (Tu=20°C)	17.5 A
Rated current, max. No. pins (Tu=20°C)	16 A
Rated current, min. No. pins (Tu=40°C)	17.5 A
Rated current, max. No. pins (Tu=40°C)	14.2 A
Rated voltage for overvoltage class/pollution severity II/2	630 V
Rated voltage for overvoltage class/pollution severity III/2	320 V

#### DIN IEC rating data

Rated voltage for overvoltage class/pollution severity III/3	250 V
Rated impulse withstand voltage for overvoltage class/pollution severity II/2	4 kV
Rated impulse withstand voltage for overvoltage class/pollution severity III/2	4 kV
Rated impulse withstand voltage for overvoltage class/pollution severity III/3	4 kV
Short-time withstand current resistance	3 x 1s with 120 A

#### CSA rating data

Rated voltage, user group D	300 V
Rated current, user group D	10 A
AWG conductor (field wiring), min.	24
AWG conductor (field wiring), max.	14

#### UL 1059 rating data

Rated voltage, user group D	300 V
Rated current, user group D	10 A
AWG conductor, min.	24
AWG conductor, max.	14

#### Approvals

Approvals institutes



#### Downloads

CAD Library (P-CAD Format - Standard)	LM.lib
---------------------------------------	--------

#### Classifications

ETIM 2.0	NK
ETIM 3.0	EC001284
eClass 4.1	NK
eClass 5.0	NK
eClass 5.1	NK

#### Similar products

Order No.	Part designation	Version
1715310000	LM5.00/2/90 OR	PCB terminal, Clamping yoke connection, Soldered connection, Clamping range, max.: 2.5 mm <sup>2</sup> , Pitch: 5.00 mm, No. of poles: 2, 90°, Box
1715250000	LM5.00/2/90 SW	PCB terminal, Clamping yoke connection, Soldered connection, Clamping range, max.: 2.5 mm <sup>2</sup> , Pitch: 5.00 mm, No. of poles: 2, 90°, Box
1913110000	LM 5.00/2/90 GR	PCB terminal, Clamping yoke connection, Soldered connection, Clamping range, max.: 2.5 mm <sup>2</sup> , Pitch: 5.00 mm, No. of poles: 2, 90°, Box
1715370000	LM5.00/2/90 GN	PCB terminal, Clamping yoke connection, Soldered connection, Clamping range, max.: 2.5 mm <sup>2</sup> , Pitch: 5.00 mm, No. of poles: 2, 90°, Box
1715320000	LM5.00/3/90 OR	PCB terminal, Clamping yoke connection, Soldered connection, Clamping range, max.: 2.5 mm <sup>2</sup> , Pitch: 5.00 mm, No. of poles: 3, 90°, Box
1715260000	LM5.00/3/90 SW	PCB terminal, Clamping yoke connection, Soldered connection, Clamping range, max.: 2.5 mm <sup>2</sup> , Pitch: 5.00 mm, No. of poles: 3, 90°, Box
1913120000	LM 5.00/3/90 GR	PCB terminal, Clamping yoke connection, Soldered connection, Clamping range, max.: 2.5 mm <sup>2</sup> , Pitch: 5.00 mm, No. of poles: 3, 90°, Box
1715380000	LM5.00/3/90 GN	PCB terminal, Clamping yoke connection, Soldered connection, Clamping range, max.: 2.5 mm <sup>2</sup> , Pitch: 5.00 mm, No. of poles: 3, 90°, Box
1821490000	LM5.00/4/90 3.5OR	PCB terminal, Clamping yoke connection, Soldered connection, Clamping range, max.: 2.5 mm <sup>2</sup> , Pitch: 5.00 mm, No. of poles: 4, 90°, Box
1913150000	LM 5.00/4/90 GR	PCB terminal, Clamping yoke connection, Soldered connection, Clamping range, max.: 2.5 mm <sup>2</sup> , Pitch: 5.00 mm, No. of poles: 4, 90°, Box
1913000000	LM 5.00/4/90 GN	PCB terminal, Clamping yoke connection, Soldered connection, Clamping range, max.: 2.5 mm <sup>2</sup> , Pitch: 5.00 mm, No. of poles: 4, 90°, Box
1845310000	LM5.00/5/90 3.5OR	PCB terminal, Clamping yoke connection, Soldered connection, Clamping range, max.: 2.5 mm <sup>2</sup> , Pitch: 5.00 mm, No. of poles: 5, 90°, Box
9993310000	LM5.00/5/90 3.5 SW	PCB terminal, Clamping yoke connection, Soldered connection, Clamping range, max.: 2.5 mm <sup>2</sup> , Pitch: 5.00 mm, No. of poles: 5, 90°, Box
1913160000	LM 5.00/5/90 GR	PCB terminal, Clamping yoke connection, Soldered connection, Clamping range, max.: 2.5 mm <sup>2</sup> , Pitch: 5.00 mm, No. of poles: 5, 90°, Box
1913010000	LM 5.00/5/90 GN	PCB terminal, Clamping yoke connection, Soldered connection, Clamping range, max.: 2.5 mm <sup>2</sup> , Pitch: 5.00 mm, No. of poles: 5, 90°, Box
1845320000	LM5.00/6/90 3.5OR	PCB terminal, Clamping yoke connection, Soldered connection, Clamping range, max.: 2.5 mm <sup>2</sup> , Pitch: 5.00 mm, No. of poles: 6, 90°, Box
9993320000	LM5.00/6/90 3.5 SW	PCB terminal, Clamping yoke connection, Soldered connection, Clamping range, max.: 2.5 mm <sup>2</sup> , Pitch: 5.00 mm, No. of poles: 6, 90°, Box

1913170000	LM 5.00/6/90 GR	PCB terminal, Clamping yoke connection, Soldered connection, Clamping range, max.: 2.5 mm <sup>2</sup> , Pitch: 5.00 mm, No. of poles: 6, 90°, Box
1913020000	LM 5.00/6/90 GN	PCB terminal, Clamping yoke connection, Soldered connection, Clamping range, max.: 2.5 mm <sup>2</sup> , Pitch: 5.00 mm, No. of poles: 6, 90°, Box
1845330000	LM5.00/7/90 3.5OR	PCB terminal, Clamping yoke connection, Soldered connection, Clamping range, max.: 2.5 mm <sup>2</sup> , Pitch: 5.00 mm, No. of poles: 7, 90°, Box
9993330000	LM5.00/7/90 3.5 SW	PCB terminal, Clamping yoke connection, Soldered connection, Clamping range, max.: 2.5 mm <sup>2</sup> , Pitch: 5.00 mm, No. of poles: 7, 90°, Box
1913180000	LM 5.00/7/90 GR	PCB terminal, Clamping yoke connection, Soldered connection, Clamping range, max.: 2.5 mm <sup>2</sup> , Pitch: 5.00 mm, No. of poles: 7, 90°, Box
1913030000	LM 5.00/7/90 GN	PCB terminal, Clamping yoke connection, Soldered connection, Clamping range, max.: 2.5 mm <sup>2</sup> , Pitch: 5.00 mm, No. of poles: 7, 90°, Box
1845340000	LM5.00/8/90 3.5OR	PCB terminal, Clamping yoke connection, Soldered connection, Clamping range, max.: 2.5 mm <sup>2</sup> , Pitch: 5.00 mm, No. of poles: 8, 90°, Box
9993340000	LM5.00/8/90 3.5 SW	PCB terminal, Clamping yoke connection, Soldered connection, Clamping range, max.: 2.5 mm <sup>2</sup> , Pitch: 5.00 mm, No. of poles: 8, 90°, Box
1913190000	LM 5.00/8/90 GR	PCB terminal, Clamping yoke connection, Soldered connection, Clamping range, max.: 2.5 mm <sup>2</sup> , Pitch: 5.00 mm, No. of poles: 8, 90°, Box
1913050000	LM 5.00/8/90 GN	PCB terminal, Clamping yoke connection, Soldered connection, Clamping range, max.: 2.5 mm <sup>2</sup> , Pitch: 5.00 mm, No. of poles: 8, 90°, Box
1845350000	LM5.00/9/90 3.5OR	PCB terminal, Clamping yoke connection, Soldered connection, Clamping range, max.: 2.5 mm <sup>2</sup> , Pitch: 5.00 mm, No. of poles: 9, 90°, Box
9993350000	LM5.00/9/90 3.5 SW	PCB terminal, Clamping yoke connection, Soldered connection, Clamping range, max.: 2.5 mm <sup>2</sup> , Pitch: 5.00 mm, No. of poles: 9, 90°, Box
1913200000	LM 5.00/9/90 GR	PCB terminal, Clamping yoke connection, Soldered connection, Clamping range, max.: 2.5 mm <sup>2</sup> , Pitch: 5.00 mm, No. of poles: 9, 90°, Box
1913060000	LM 5.00/9/90 GN	PCB terminal, Clamping yoke connection, Soldered connection, Clamping range, max.: 2.5 mm <sup>2</sup> , Pitch: 5.00 mm, No. of poles: 9, 90°, Box
1845360000	LM5.00/10/90 3.5OR	PCB terminal, Clamping yoke connection, Soldered connection, Clamping range, max.: 2.5 mm <sup>2</sup> , Pitch: 5.00 mm, No. of poles: 10, 90°, Box
1845370000	LM5.00/11/90 3.5OR	PCB terminal, Clamping yoke connection, Soldered connection, Clamping range, max.: 2.5 mm <sup>2</sup> , Pitch: 5.00 mm, No. of poles: 11, 90°, Box
9993360000	LM5.00/10/90 3.5 SW	PCB terminal, Clamping yoke connection, Soldered connection, Clamping range, max.: 2.5 mm <sup>2</sup> , Pitch: 5.00 mm, No. of poles: 10, 90°, Box

1913210000	LM 5.00/10/90 GR	PCB terminal, Clamping yoke connection, Soldered connection, Clamping range, max.: 2.5 mm <sup>2</sup> , Pitch: 5.00 mm, No. of poles: 10, 90°, Box
1913070000	LM 5.00/10/90 GN	PCB terminal, Clamping yoke connection, Soldered connection, Clamping range, max.: 2.5 mm <sup>2</sup> , Pitch: 5.00 mm, No. of poles: 10, 90°, Box
9993370000	LM5.00/11/90 3.5 SW	PCB terminal, Clamping yoke connection, Soldered connection, Clamping range, max.: 2.5 mm <sup>2</sup> , Pitch: 5.00 mm, No. of poles: 11, 90°, Box
1913220000	LM 5.00/11/90 GR	PCB terminal, Clamping yoke connection, Soldered connection, Clamping range, max.: 2.5 mm <sup>2</sup> , Pitch: 5.00 mm, No. of poles: 11, 90°, Box
1913090000	LM 5.00/11/90 GN	PCB terminal, Clamping yoke connection, Soldered connection, Clamping range, max.: 2.5 mm <sup>2</sup> , Pitch: 5.00 mm, No. of poles: 11, 90°, Box
1845380000	LM5.00/12/90 3.5OR	PCB terminal, Clamping yoke connection, Soldered connection, Clamping range, max.: 2.5 mm <sup>2</sup> , Pitch: 5.00 mm, No. of poles: 12, 90°, Box
9993380000	LM5.00/12/90 3.5 SW	PCB terminal, Clamping yoke connection, Soldered connection, Clamping range, max.: 2.5 mm <sup>2</sup> , Pitch: 5.00 mm, No. of poles: 12, 90°, Box
1913230000	LM 5.00/12/90 GR	PCB terminal, Clamping yoke connection, Soldered connection, Clamping range, max.: 2.5 mm <sup>2</sup> , Pitch: 5.00 mm, No. of poles: 12, 90°, Box
1913100000	LM 5.00/12/90 GN	PCB terminal, Clamping yoke connection, Soldered connection, Clamping range, max.: 2.5 mm <sup>2</sup> , Pitch: 5.00 mm, No. of poles: 12, 90°, Box
9993390000	LM5.00/13/90 3.5 SW	PCB terminal, Clamping yoke connection, Soldered connection, Clamping range, max.: 2.5 mm <sup>2</sup> , Pitch: 5.00 mm, No. of poles: 13, 90°, Box
9993400000	LM5.00/14/90 3.5 SW	PCB terminal, Clamping yoke connection, Soldered connection, Clamping range, max.: 2.5 mm <sup>2</sup> , Pitch: 5.00 mm, No. of poles: 14, 90°, Box
9993410000	LM5.00/15/90 3.5 SW	PCB terminal, Clamping yoke connection, Soldered connection, Clamping range, max.: 2.5 mm <sup>2</sup> , Pitch: 5.00 mm, No. of poles: 15, 90°, Box
9993420000	LM5.00/16/90 3.5 SW	PCB terminal, Clamping yoke connection, Soldered connection, Clamping range, max.: 2.5 mm <sup>2</sup> , Pitch: 5.00 mm, No. of poles: 16, 90°, Box
9993430000	LM5.00/17/90 3.5 SW	PCB terminal, Clamping yoke connection, Soldered connection, Clamping range, max.: 2.5 mm <sup>2</sup> , Pitch: 5.00 mm, No. of poles: 17, 90°, Box
9993440000	LM5.00/18/90 3.5 SW	PCB terminal, Clamping yoke connection, Soldered connection, Clamping range, max.: 2.5 mm <sup>2</sup> , Pitch: 5.00 mm, No. of poles: 18, 90°, Box
9993450000	LM5.00/19/90 3.5 SW	PCB terminal, Clamping yoke connection, Soldered connection, Clamping range, max.: 2.5 mm <sup>2</sup> , Pitch: 5.00 mm, No. of poles: 19, 90°, Box
9993460000	LM5.00/20/90 3.5 SW	PCB terminal, Clamping yoke connection, Soldered connection, Clamping range, max.: 2.5 mm <sup>2</sup> , Pitch: 5.00 mm, No. of poles: 20, 90°, Box

9993470000	LM5.00/21/90 3.5 SW	PCB terminal, Clamping yoke connection, Soldered connection, Clamping range, max.: 2.5 mm <sup>2</sup> , Pitch: 5.00 mm, No. of poles: 21, 90°, Box
9993480000	LM5.00/22/90 3.5 SW	PCB terminal, Clamping yoke connection, Soldered connection, Clamping range, max.: 2.5 mm <sup>2</sup> , Pitch: 5.00 mm, No. of poles: 22, 90°, Box
9993490000	LM5.00/23/90 3.5 SW	PCB terminal, Clamping yoke connection, Soldered connection, Clamping range, max.: 2.5 mm <sup>2</sup> , Pitch: 5.00 mm, No. of poles: 23, 90°, Box
9993500000	LM5.00/24/90 3.5 SW	PCB terminal, Clamping yoke connection, Soldered connection, Clamping range, max.: 2.5 mm <sup>2</sup> , Pitch: 5.00 mm, No. of poles: 24, 90°, Box