



Chipsmall Limited consists of a professional team with an average of over 10 year of expertise in the distribution of electronic components. Based in Hongkong, we have already established firm and mutual-benefit business relationships with customers from,Europe,America and south Asia,supplying obsolete and hard-to-find components to meet their specific needs.

With the principle of “Quality Parts,Customers Priority,Honest Operation,and Considerate Service”,our business mainly focus on the distribution of electronic components. Line cards we deal with include Microchip,ALPS,ROHM,Xilinx,Pulse,ON,Everlight and Freescale. Main products comprise IC,Modules,Potentiometer,IC Socket,Relay,Connector.Our parts cover such applications as commercial,industrial, and automotives areas.

We are looking forward to setting up business relationship with you and hope to provide you with the best service and solution. Let us make a better world for our industry!



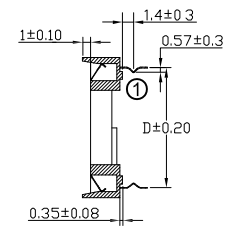
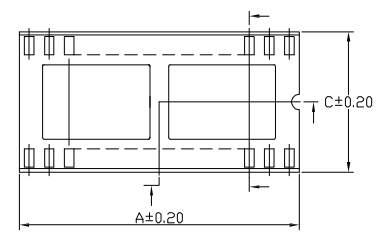
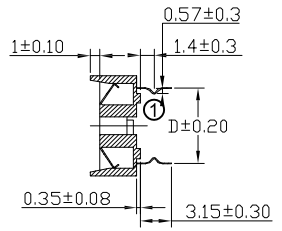
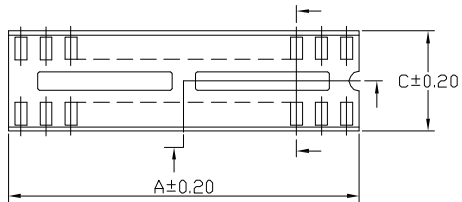
Contact us

Tel: +86-755-8981 8866 Fax: +86-755-8427 6832

Email & Skype: info@chipsmall.com Web: www.chipsmall.com

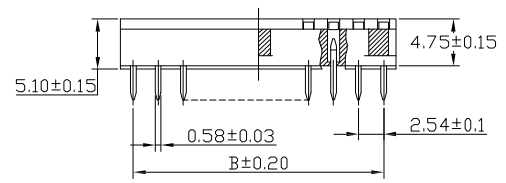
Address: A1208, Overseas Decoration Building, #122 Zhenhua RD., Futian, Shenzhen, China





Dimensions

Positions	A	B	C	D
06	7.62	5.08	10.16	7.62
08	10.16	7.62	10.16	
14	17.78	15.24	10.16	
16	20.32	17.78	10.16	
18	22.86	20.32	10.16	
20	25.40	22.86	10.16	



① Dimensions

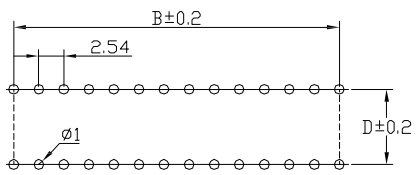
Positions	A	B	C	D
24	30.48	27.94	17.78	15.24
28	35.56	33.02	17.78	
32	40.64	38.10	17.78	
40	50.80	48.26	17.78	
48	60.96	58.42	17.78	

Material:

Contact:
Phosphor Bronze thickness 0.15mm
Plating:
Contact Plating, Tin plated 60u"~80u"
Insulator:
PBT-4830, UL 94V-0

SPECIFICATIONS:

Current Rating:1A
Dielectric withstanding Voltage:1000v
RMS/minute
Insulator resistance:5000 Megohms min.
Contact resistance:20 milliohms initial
30 milliohms after test.
Operating temperatures:-55°C to 85°C
Insertion force:340g(12 oz)max.per contact.
Withdrawal force:80g(2.82 oz)min.per contact.



PCB Layout

RoHS compliant
Unit: mm

Scale	FREE						Date	Name	Customer-No.	
TOLERANCE						Drawn	26.05.2014	Ray		
X.	±0.38					Approved	29.07.2014	Amy	ASSMANN WSW-No.	
X.X	±0.25								Axx-LC-TR	
X.XX	±0.13								Drawing-No.	
DIM	TOL	①	Update the drawing	29.07.2014	Amy	ASSMANN WSW components			ASS 6449 CO	rev01
Angle	±3°	②	Drawn	26.05.2014	Ray				Replace	Sheet
Angle	TOL	Id.	Modification	Date	Name					

1

2

3

4

5

6

7