



Chipsmall Limited consists of a professional team with an average of over 10 year of expertise in the distribution of electronic components. Based in Hongkong, we have already established firm and mutual-benefit business relationships with customers from,Europe,America and south Asia,supplying obsolete and hard-to-find components to meet their specific needs.

With the principle of "Quality Parts,Customers Priority,Honest Operation,and Considerate Service",our business mainly focus on the distribution of electronic components. Line cards we deal with include Microchip,ALPS,ROHM,Xilinx,Pulse,ON,Everlight and Freescale. Main products comprise IC,Modules,Potentiometer,IC Socket,Relay,Connector.Our parts cover such applications as commercial,industrial, and automotives areas.

We are looking forward to setting up business relationship with you and hope to provide you with the best service and solution. Let us make a better world for our industry!



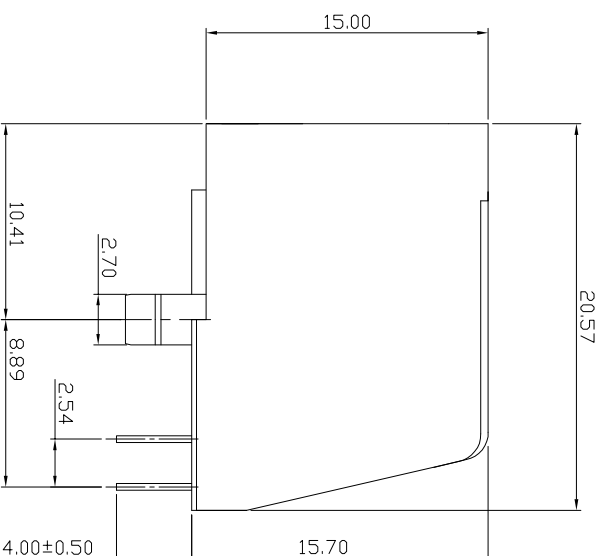
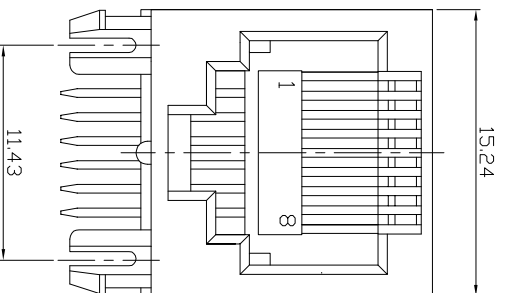
## Contact us

Tel: +86-755-8981 8866 Fax: +86-755-8427 6832

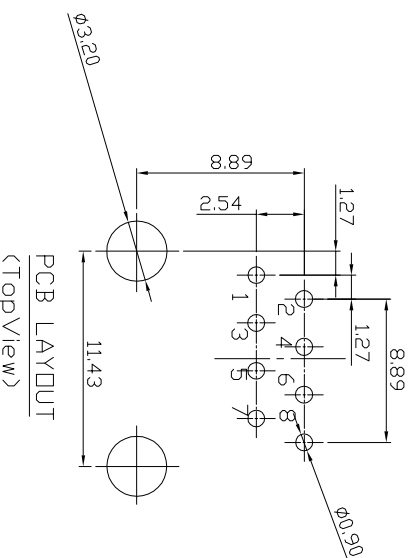
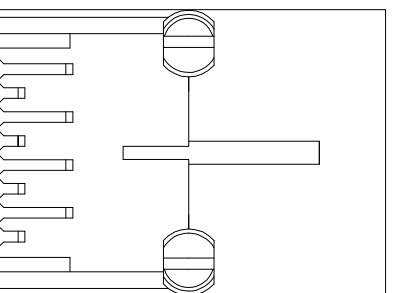
Email & Skype: info@chipsmall.com Web: www.chipsmall.com

Address: A1208, Overseas Decoration Building, #122 Zhenhua RD., Futian, Shenzhen, China





- Specification:**
- Electrical Char**  
Insulation Resistance: 500MΩ min. 500V DC for 1 minute  
Contact Resistance: 30mΩ max.  
Rating Current: 1.5A max.  
Rating Voltage: 150V AC  
Dielectric Voltage: 1000 Vrms at 1MA 60 sec. min.
  - Physical Char**  
Housing: PBT Glass filled (UL 94V-0) Color: Black  
Soldering Temperature: 235°C for 5 sec.  
Spring Wire: 0.35mm Dia Phosphor Bronze  
6u" Gold plating over Nickel  
Temperature Range: -40°C to +85°C  
Durability: 750 mating cycles min.
  - Packing:** Tray



**RoHS compliant**  
Unit:mm

Scale	Free	
TOLERANCE		
.XX	±0.20	
.XXX	±0.13	
.XXXX	±0.05	
DIM	TOL	
Angle	+0°30'	
Id.	①	Drawn
Modification		Date
		04.08.2016
		Name
		Winnie
		Date
		04.08.2016
		Name
		Winnie

**ASSMANN**  
components

Customer-No.  
ASSMANN.WSW-No.  
A-2004-2-4-N-R  
Drawing-No.  
ASS 7324 CO  
Replace  
rev00  
SHEET

1

2

3

4

5

6

7

A  
B  
C  
D  
E  
F  
G  
H

H  
G  
C  
D  
E  
F  
G  
H