

Chipsmall Limited consists of a professional team with an average of over 10 year of expertise in the distribution of electronic components. Based in Hongkong, we have already established firm and mutual-benefit business relationships with customers from,Europe,America and south Asia,supplying obsolete and hard-to-find components to meet their specific needs.

With the principle of “Quality Parts,Customers Priority,Honest Operation,and Considerate Service”,our business mainly focus on the distribution of electronic components. Line cards we deal with include Microchip,ALPS,ROHM,Xilinx,Pulse,ON,Everlight and Freescale. Main products comprise IC,Modules,Potentiometer,IC Socket,Relay,Connector.Our parts cover such applications as commercial,industrial, and automotives areas.

We are looking forward to setting up business relationship with you and hope to provide you with the best service and solution. Let us make a better world for our industry!

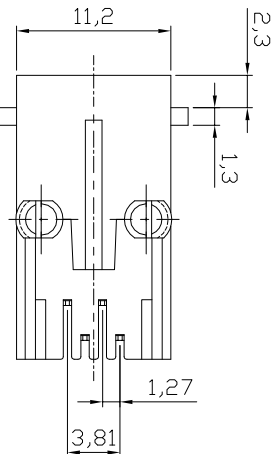
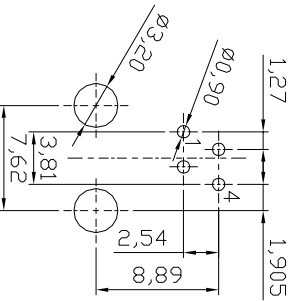
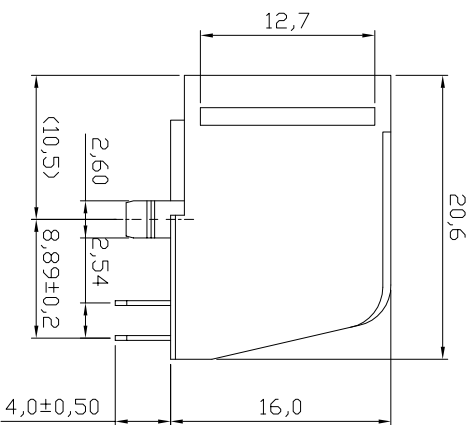
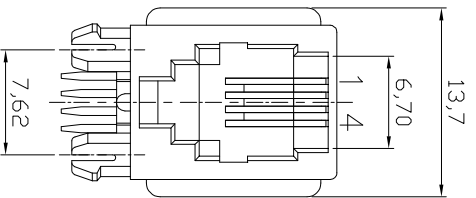


Contact us

Tel: +86-755-8981 8866 Fax: +86-755-8427 6832

Email & Skype: info@chipsmall.com Web: www.chipsmall.com

Address: A1208, Overseas Decoration Building, #122 Zhenhua RD., Futian, Shenzhen, China



NOTES:
Mechanical:
1. Housing material : Glass Filled Polyester UL94V-0,
Color: Black

2. Contact material: Phosphor Bronze t=0,35mm
3. Contact plating: 6u" Gold on contact area
100~200u" Tin on solder area
all over 30~50u" Nickel
4. Operating Life: 750 Cycles min.
5. PCB Retention Pre-solder: 1 LB min.
6. PCB Retention Post-solder: 10 LBS min.

Electrical:

1. Voltage Rating: 125VAC.
2. Current Rating: 1,5AMP.
3. Contact Resistance: 50mΩ max.
4. Insulation Resistance: 500MΩ min. @ 1000 VDC
5. Dielectric Strength: 1000 VAC RMS 60Hz, 1 min.

Environmental:

1. Storage: -40°C To +85°C
2. Operation: -40°C~+85°C
3. Wave Soldering Temp: 200~220°C(5~10S)
4. Packing: 120pcs/Tray, 2640pcs/Cartron

RoHS compliant
Unit:mm



File No.: E345352

Scale	Free								
TOLERANCE									
XX	±0.20			Drawn		Date		08.07.2009	
XX	±0.15			Approved		Date		25.08.2015	
X,XXX	±0.10	③ Update the contact plating		Amy		Name		Amy	
DIM	TOL	② Update		27.05.2013		Amy			
		① Drawn		08.07.2009		Dean			
Angle	±5°	Id.		Modification		Date		Name	

ASSMANN
components

Customer-No. ASSMANN WSW-No. A-20040
Drawing-No. ASS 0447 CO rev03
Replace SHEET

1 2 3 4 5 6 7

H G F E D C B A