



Chipsmall Limited consists of a professional team with an average of over 10 year of expertise in the distribution of electronic components. Based in Hongkong, we have already established firm and mutual-benefit business relationships with customers from,Europe,America and south Asia,supplying obsolete and hard-to-find components to meet their specific needs.

With the principle of “Quality Parts,Customers Priority,Honest Operation,and Considerate Service”,our business mainly focus on the distribution of electronic components. Line cards we deal with include Microchip,ALPS,ROHM,Xilinx,Pulse,ON,Everlight and Freescale. Main products comprise IC,Modules,Potentiometer,IC Socket,Relay,Connector.Our parts cover such applications as commercial,industrial, and automotives areas.

We are looking forward to setting up business relationship with you and hope to provide you with the best service and solution. Let us make a better world for our industry!



## Contact us

Tel: +86-755-8981 8866 Fax: +86-755-8427 6832

Email & Skype: info@chipsmall.com Web: www.chipsmall.com

Address: A1208, Overseas Decoration Building, #122 Zhenhua RD., Futian, Shenzhen, China



1

2

3

4

5

6

7

A

B

C

D

E

F

A

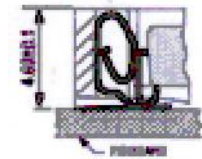
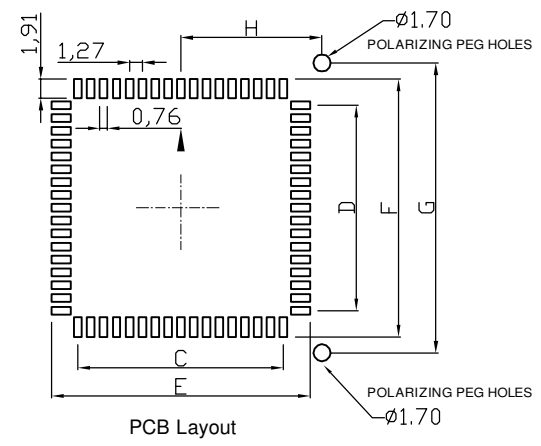
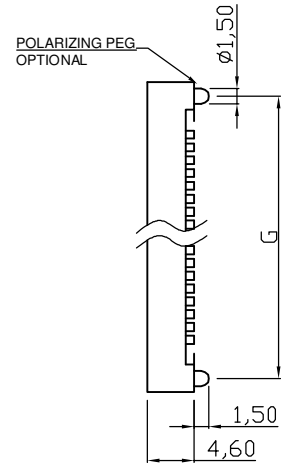
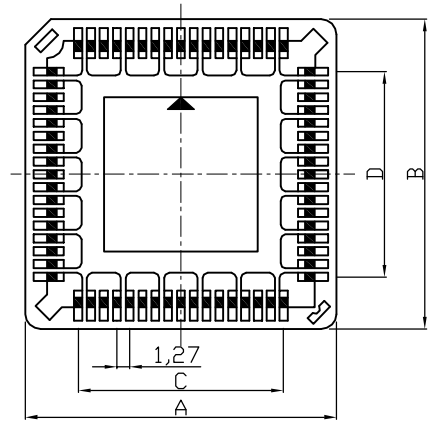
B

C

D

E

F



### Product Specification

#### Material

Insulator: Glass filled NYLON9T UL94V-0 , Black  
 Contact :Phosphor Bronze,0.20mm Thickness  
 Plated: Matted Tin Plated 100u"up over 40u" Nickel (Lead Free)

#### MECHANICAL PERFORMANCE:

Durability: Per MIL-STD-1344, Method 2016,25 Cycles  
 Vibration: Per MIL-STD-810c, Method 514.2 10-200,000Hz 5G's  
 Shock: Per MIL-STD-810C, Method 516.2,35G's  
 Acceleration: Per MIL-STD-810C, Method 513.2, 15G's  
 Contact Force: 210g/per pin.

#### ELECTRICAL PERFORMANCE:

Contact Interface Resistance:  
 Initial:6.5 Milliohms Average  
 Final: 15.0 Milliohms Average Max.After Testing.  
 Current rating: 1 AMP  
 Voltage rating: 250V  
 Contact resistance: 20mohms Max.  
 Insulation Resistance:10000 Megohms min.  
 Dielectric Strength: 1000VAC continuous for 1 minute.  
 Operating and Storage Temperature :-40°C to +105°C

#### Order Information:

-SM : Without Polarizing Peg  
 -SM/P : With Polarizing Peg

#### Soldering Information:


Recommend reflow temperature 245°C, preheat time over 160s

#### Dimensions

No. of Contacts	A±0.2	B±0.2	C±0.1	D±0.1	E±0.1	F±0.1	G±0.2	H±0.1
20	15.65	15.65	5.08	5.08	10.03	10.03	12.70	6.35
28	18.18	18.18	7.62	7.62	12.57	12.57	15.24	7.62
32	18.18	20.75	10.16	10.16	12.57	15.11	17.78	7.62
44	23.28	23.28	12.70	12.70	17.65	17.65	20.32	10.16
52	25.84	25.84	15.24	15.24	20.19	20.19	22.86	11.43
68	30.95	30.95	20.32	20.32	25.27	25.27	27.94	13.97
84	36.00	36.00	25.40	25.40	30.35	30.35	33.02	16.15

## RoHS compliant

Unit:mm

Scale	Free	⑧	Correction 32pin dim C	28.03.2017	S.Bölling		Date	Name	Customer-No.
TOLERANCE		⑦	Update detail plating information	17.03.2016	Jesse	Drawn	13.10.1998	Hellwig	ASSMANN WSW-No. A-CCS 0xx-Z-SM A-CCS 0xx-Z-SM/P
X.	±X	⑥	Add electrical performance	28.05.2014	Ray	Approved	17.03.2016	Jesse	
X.X	±X	⑤	Add soldering information	18.12.2013	Ray				
X.XX	±X	④	Correction	03.08.2012	Lucas				Drawing-No. ASS 0142 CO rev08
X.°	±X	③	Update	02.08.2012	Lucas				
Angle	TOL	Id.	Modification	Date	Name				Sheet 1/2
									Replace

1

2

3

4

5

6

7

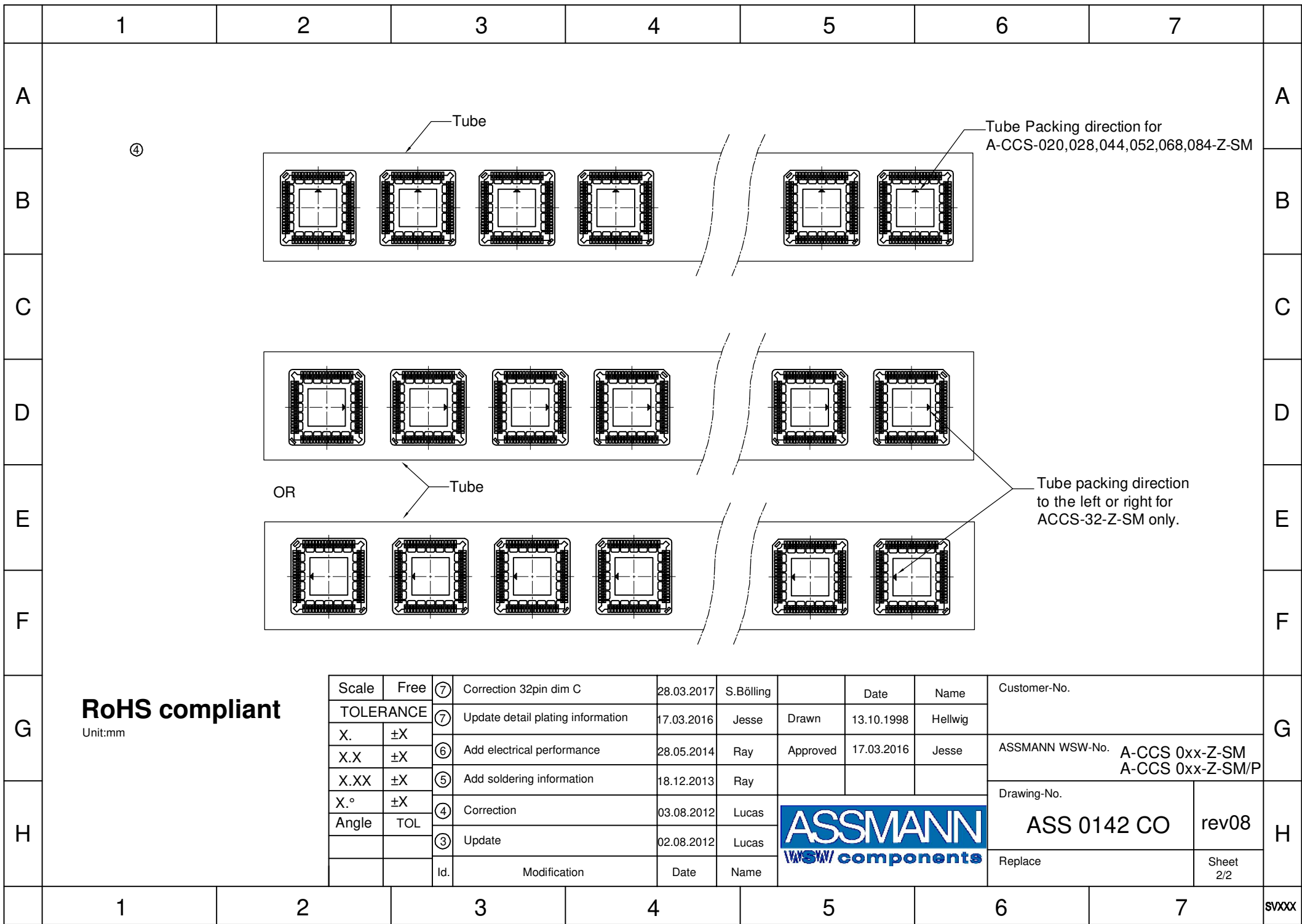
svxxx

G

H

G

H



**RoHS compliant**  
Unit:mm

Scale	Free	⑦	Correction 32pin dim C	28.03.2017	S.Bölling		Date	Name	Customer-No.
TOLERANCE		⑦	Update detail plating information	17.03.2016	Jesse	Drawn	13.10.1998	Hellwig	ASSMANN WSW-No. A-CCS 0xx-Z-SM A-CCS 0xx-Z-SM/P
X.	±X	⑥	Add electrical performance	28.05.2014	Ray	Approved	17.03.2016	Jesse	
X.X	±X	⑤	Add soldering information	18.12.2013	Ray				
X.XX	±X	⑤	Add soldering information	18.12.2013	Ray				Drawing-No. ASS 0142 CO rev08
X.°	±X	④	Correction	03.08.2012	Lucas				
Angle	TOL	④	Update	02.08.2012	Lucas			Replace	Sheet 2/2
		③	Update	02.08.2012	Lucas				
		Id.	Modification	Date	Name				



ASSMANN WSW-No. A-CCS 0xx-Z-SM  
A-CCS 0xx-Z-SM/P

Drawing-No. ASS 0142 CO rev08

Replace Sheet 2/2