



Chipsmall Limited consists of a professional team with an average of over 10 year of expertise in the distribution of electronic components. Based in Hongkong, we have already established firm and mutual-benefit business relationships with customers from,Europe,America and south Asia,supplying obsolete and hard-to-find components to meet their specific needs.

With the principle of “Quality Parts,Customers Priority,Honest Operation,and Considerate Service”,our business mainly focus on the distribution of electronic components. Line cards we deal with include Microchip,ALPS,ROHM,Xilinx,Pulse,ON,Everlight and Freescale. Main products comprise IC,Modules,Potentiometer,IC Socket,Relay,Connector.Our parts cover such applications as commercial,industrial, and automotives areas.

We are looking forward to setting up business relationship with you and hope to provide you with the best service and solution. Let us make a better world for our industry!



Contact us

Tel: +86-755-8981 8866 Fax: +86-755-8427 6832

Email & Skype: info@chipsmall.com Web: www.chipsmall.com

Address: A1208, Overseas Decoration Building, #122 Zhenhua RD., Futian, Shenzhen, China



A

B

C

D

E

F

A

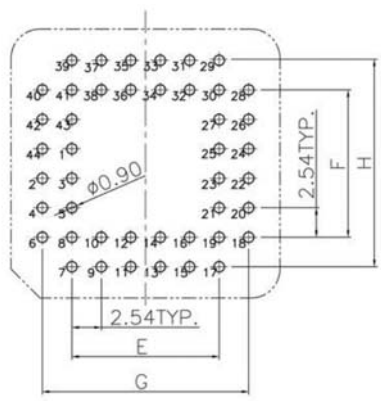
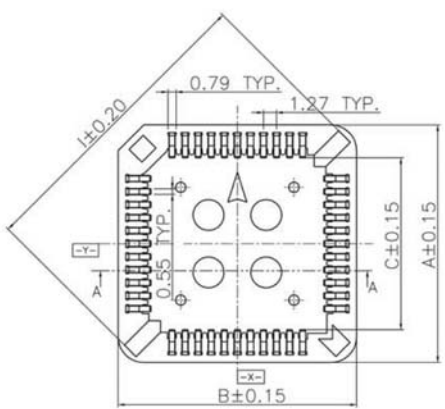
B

C

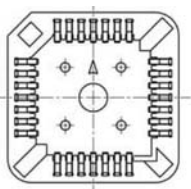
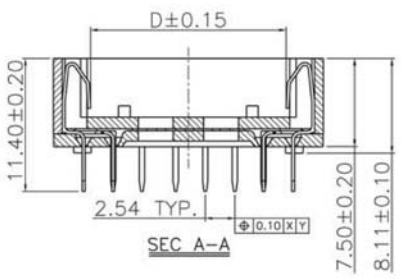
D

E

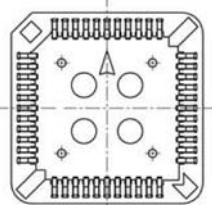
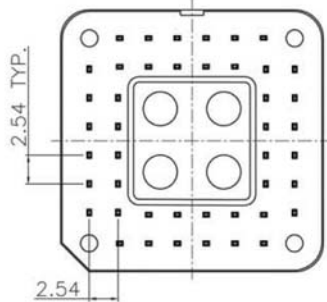
F



RECOMMENDED P.C. BOARD LAYOUT



32P



44P

Dimension (mm) / No.Of Pin	A	B	C	D	E	F	G	H	I
DIP – 20P	15.56	15.56	9.10	9.10	5.08	5.08	10.16	10.16	17.55
DIP – 28P	18.10	18.10	11.66	11.66	7.62	7.62	12.70	12.70	21.25
DIP – 32P	20.60	18.10	14.17	11.69	7.62	10.16	12.70	15.24	23.00
DIP – 44P	23.48	23.48	16.78	16.78	12.70	12.70	17.78	17.78	28.50
DIP – 52P	25.88	25.88	19.28	19.28	15.24	15.24	20.32	20.32	32.45
DIP – 68P	31.66	31.66	24.35	24.35	20.32	20.32	25.40	25.40	39.30
DIP – 84P	36.66	36.66	29.38	29.38	25.40	25.40	30.48	30.48	46.85

NOTES:
 SPECIFICATIONS:
 CURRENT RATING:1 AMP.
 VOLTAGE:250V AC/DC MAX.
 DIELECTRIC WITHSTANDING:500VAC FOR ONE MINUTE.
 CONTACT RESISTANCE:30mΩ (MAX).
 INSULATION RESISTANCE:1000MΩ (MIN).
 OPERATING TEMPERATURE:-55°C+105°C
 RETENTION FORCE:0.30KG PER PIN (MIN).
 MATERIALS:
 BODY: PBT+30%GF UL 94V-0.
 COVER:PBT+30%GF UL 94V-0.
 CONTACTS:PHOSOR BRONZE.
 CONTACT PLATING TIN/GOLD.



Scale	1:1							Name	
TOLERANCE								Item No.	
X.X	±0.40				Drawn	11.07.11	Chappell	A-CCSxx-Z-R (Tin) A-CCSxx-G-R (Gold)	
X.XX	±0.25				Approved				Title
X.XXX	±0.15								Chip-Carrier PLCC socket, 2.54MM pitch
Angle	±3°							Drawing No.	
		Modification		Date	Name			rev00	
						Replace		Sheet	

H