



Chipsmall Limited consists of a professional team with an average of over 10 year of expertise in the distribution of electronic components. Based in Hongkong, we have already established firm and mutual-benefit business relationships with customers from,Europe,America and south Asia,supplying obsolete and hard-to-find components to meet their specific needs.

With the principle of “Quality Parts,Customers Priority,Honest Operation,and Considerate Service”,our business mainly focus on the distribution of electronic components. Line cards we deal with include Microchip,ALPS,ROHM,Xilinx,Pulse,ON,Everlight and Freescale. Main products comprise IC,Modules,Potentiometer,IC Socket,Relay,Connector.Our parts cover such applications as commercial,industrial, and automotives areas.

We are looking forward to setting up business relationship with you and hope to provide you with the best service and solution. Let us make a better world for our industry!



Contact us

Tel: +86-755-8981 8866 Fax: +86-755-8427 6832

Email & Skype: info@chipsmall.com Web: www.chipsmall.com

Address: A1208, Overseas Decoration Building, #122 Zhenhua RD., Futian, Shenzhen, China



1

2

3

4

5

6

7

A

NOTES:

MATERIAL

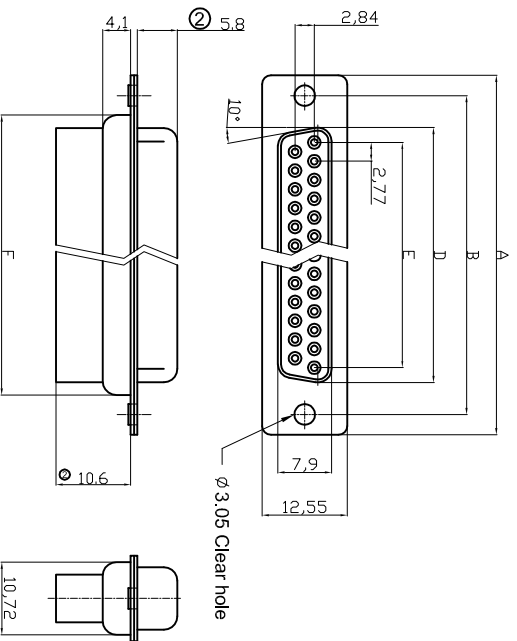
1. Insulator Material: Glass-filled thermoplastic PBT, UL94V-0 rated
2. Contact Material: Brass or Phosphor Bronze
3. Shell : Steel, 100 μ" Tin Over 50μ" min Nickel
4. Clinch Nut: Brass, 100μ" min Nickel Plated
5. Boardlock: Brass, 100μ" min Nickel Plated
6. Screwlock: Brass, 100μ" min Nickel Plated

B

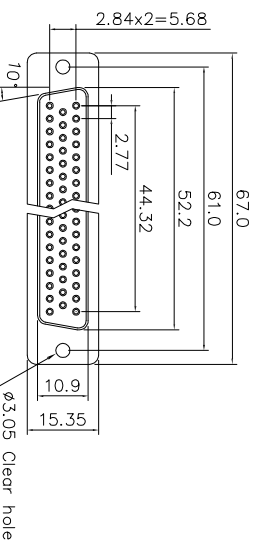
ELECTRICAL

1. Current Rating : 3 AMP
2. Voltage Rating : 250V AC/rms 60Hz
3. Contact Resistance: 20mΩ Max at 1 AMP DC
4. Insulation Resistance: 1000MΩ at 500 VDC
5. Withstand Voltage: 1000V AC/rms 60Hz for 1 minute
6. Operating Temperature: -55°C to +105°C

C



D

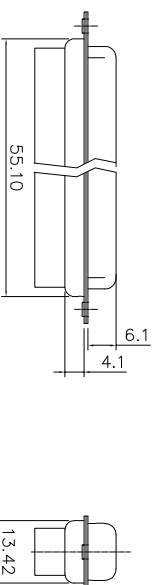


② Dimensions

Positions	A	B	D	E	F
09	30.81	24.99	16.33	11.08	19.02
15	39.20	33.30	24.70	19.39	27.70
25	53.05	47.04	38.40	33.24	41.10
37	69.40	63.50	54.80	49.86	57.30

E

F



50 Positions

RoHS compliant
Unit: mm



File No.: E198287

G

Scale Free

TOLERANCE

X. ±0.38

X.X ±0.25

X.XX ±0.13

DIM TOL

X. ° ±3°

X.X° ±1.0°

Angle TOL

Customer-No.

Date

Name

ASSMANN WSW-No.

A-DF CR/XX/FZ

Drawing-No.

ASS 1368 CO rev04

ASSMANN
WSW components

Replace

Sheet

G

H

H

1

2

3

4

5

6

7