



Chipsmall Limited consists of a professional team with an average of over 10 year of expertise in the distribution of electronic components. Based in Hongkong, we have already established firm and mutual-benefit business relationships with customers from,Europe,America and south Asia,supplying obsolete and hard-to-find components to meet their specific needs.

With the principle of “Quality Parts,Customers Priority,Honest Operation,and Considerate Service”,our business mainly focus on the distribution of electronic components. Line cards we deal with include Microchip,ALPS,ROHM,Xilinx,Pulse,ON,Everlight and Freescale. Main products comprise IC,Modules,Potentiometer,IC Socket,Relay,Connector.Our parts cover such applications as commercial,industrial, and automotives areas.

We are looking forward to setting up business relationship with you and hope to provide you with the best service and solution. Let us make a better world for our industry!



Contact us

Tel: +86-755-8981 8866 Fax: +86-755-8427 6832

Email & Skype: info@chipsmall.com Web: www.chipsmall.com

Address: A1208, Overseas Decoration Building, #122 Zhenhua RD., Futian, Shenzhen, China



1

2

3

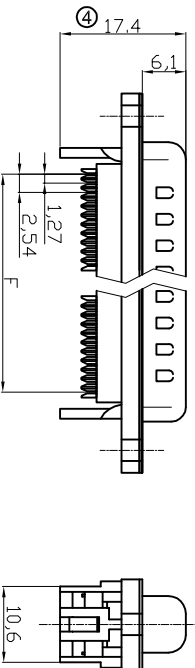
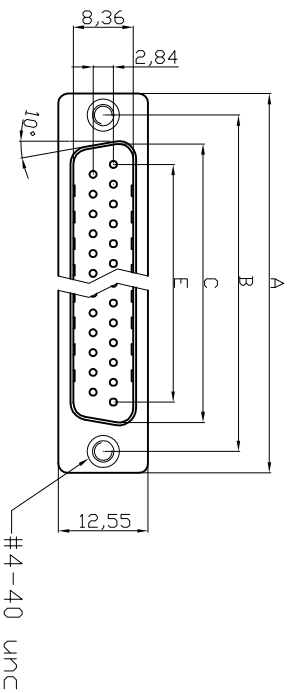
4

5

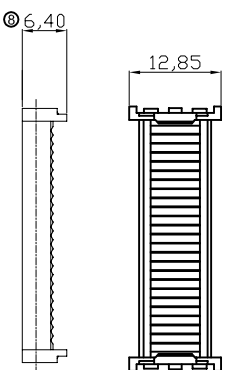
6

7

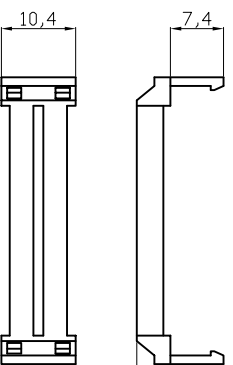
Male



With Insulator Support



Cover



Strain Relief

Dimensions

Positions	A	B	C	E	F
9	30.81	24.99	16.92	11.08	13.10
15	39.20	33.30	25.25	19.39	20.70
25	53.04	47.04	38.96	33.24	33.68
37	69.40	63.50	55.42	49.86	50.30

ROHS compliant
Unit:mm

Scale	Free	③	Update the dimension	27.02.2015	Winnie
TOLERANCE		⑦	Change the operating temperature	19.11.2014	Winnie
X.	±0.38	⑥	Correct the UL-File number	03.04.2014	Winnie
X.X	±0.25	⑤	Update the 17.28mm into 17.10mm	07.03.2014	Winnie
X.XX	±0.13	④	Update the 17.58mm into 17.40mm	04.03.2014	Winnie
DIM	TOL	③	Update the wire specification	26.06.2013	Winnie
X.°	±3°				
X.X°	±1.0°				
Angle	TOL		Modification	Date	Name



Product Specification
 Material : Glass-Filled Thermoplastic PBT UL94V-0, Black
 Insulator : Copper alloy, plating gold flash selective gold
 Contact : Steel, 100µ" Tin Over 50µ" min Copper
 Shell : Steel, 100µ" Tin Over 50µ" min Copper
 Clinch Nut : Brass, Nickel Plated

Electrical
 Contact Resistance : 20 milliohms Max at 1 AMP DC.
 Insulation Resistance : 1000 megohms at 500 VDC.
 Dielectric Withstanding Voltage : 1000 VAC/rms 60Hz for 1 minute
 Current Rating : 3 AMP
 Voltage Rating : 250 VAC/rms 60Hz
 Wire Spec : 26AWG-28 AWG
 Operating Temperature: -55°C ~ +105°C

⑥ UL E No #E198287
 ⑦ UL E No #E198287

Order Code: A-DXF xx LP1111/Z-UNC
 A-DXF xx LP1111/Z-UNC
 C - Ferrule
 S - Male
 No. of Contact
 Standard: Quality class III
 09 / 15 / 29 / 37

Customer-No.

ASSMANN WSW-No.

A-DXF xx LP1111/Z-UNC

Drawing-No.

ASS 4892 CO

rev08

Replace

Sheet 1/2

1

2

3

4

5

6

7

H

G

F

E

D

C

B

A

H

G

F

E

D

C

B

A

1

2

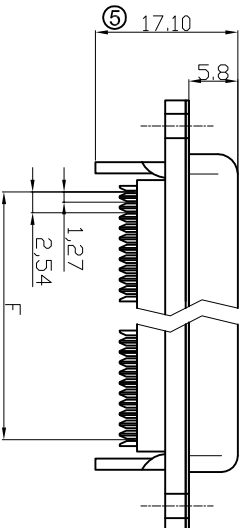
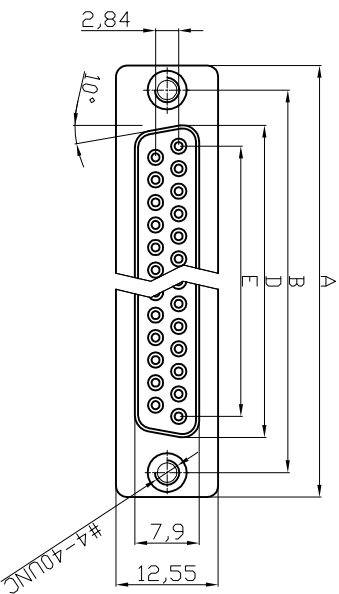
3

4

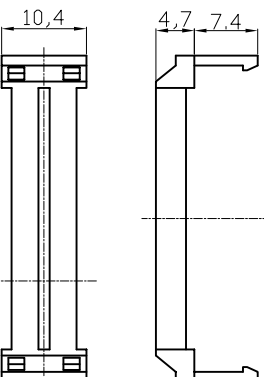
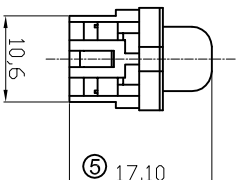
5

6

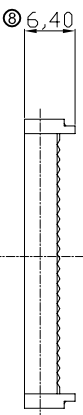
7

Female

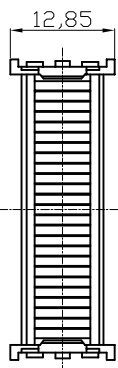
With Insulator Support



Strain Relief



Cover



- NOTES:**
- MATERIAL**
1. Insulator Material: Glass-Filled Thermoplastic PBT, UL 94V-0-Black
 2. Contact Material : Copper alloy , Gold flash selective gold
 3. Shell :SPCC
 4. Clinch Nut : Brass, Nickel Plated
 5. Screwlock : Brass, Nickel Plated
- ELECTRICAL**
1. Current Rating : 3 AMP
 2. Voltage Rating : 250 V AC/rms 60 Hz
 3. Contact Resistance: 20mΩ max at 1 AMP DC
 4. Insulation Resistance: 1000MΩ at 500 VDC
 5. Withstand Voltage : 1000V AC/rms 60Hz for 1 minute
 - ③ 6. Wire Spec : 26AWG~28 AWG
 - ⑦ 7. Operating Temperature : -55°C+105°C
- UL E No #E198287

Dimensions	A	B	D	E	F
Positions					
9	30,81	24,99	16,33	11,08	10,16
15	39,20	33,30	24,70	19,39	17,78
25	53,05	47,04	38,40	33,24	30,48
37	69,40	63,50	54,80	49,86	45,72

ROHS compliant

Unit:mm

Scale	Free	⑧	Update the dimnesion	27.02.2015	Winnie	Date	Name
TOLERANCE		⑦	Change the operating temperature	19.11.2014	Winnie	15.08.2012	Lucas
X.	±0,38	⑥	Correct the UL-File number	03.04.2014	Winnie	27.02.2015	Winnie
X.X	±0,25	⑤	Update the 17.28mm into17.10mm	07.03.2014	Winnie		
X.XX	±0,13	④	Update the 17.58mm into17.40mm	04.03.2014	Winnie		
DIM	TOL	③	Update the wire specification	26.06.2013	Winnie		
X.°	±3°						
X.X°	±1,0°						
Angle	TOL		Modification				

ASSMANN
W/SW/ components

Customer-No.

ASSMANN WSW-No.

A-DXF XX LP111/Z-UNC

Drawing-No.

ASS 4892 CO rev08

Replace

Sheet
2/2

1

2

3

4

5

6

7

H

G

F

E

D

C

B

A

H

G

F

E

D

C

B

A