



Chipsmall Limited consists of a professional team with an average of over 10 year of expertise in the distribution of electronic components. Based in Hongkong, we have already established firm and mutual-benefit business relationships with customers from,Europe,America and south Asia,supplying obsolete and hard-to-find components to meet their specific needs.

With the principle of “Quality Parts,Customers Priority,Honest Operation,and Considerate Service”,our business mainly focus on the distribution of electronic components. Line cards we deal with include Microchip,ALPS,ROHM,Xilinx,Pulse,ON,Everlight and Freescale. Main products comprise IC,Modules,Potentiometer,IC Socket,Relay,Connector.Our parts cover such applications as commercial,industrial, and automotives areas.

We are looking forward to setting up business relationship with you and hope to provide you with the best service and solution. Let us make a better world for our industry!



## Contact us

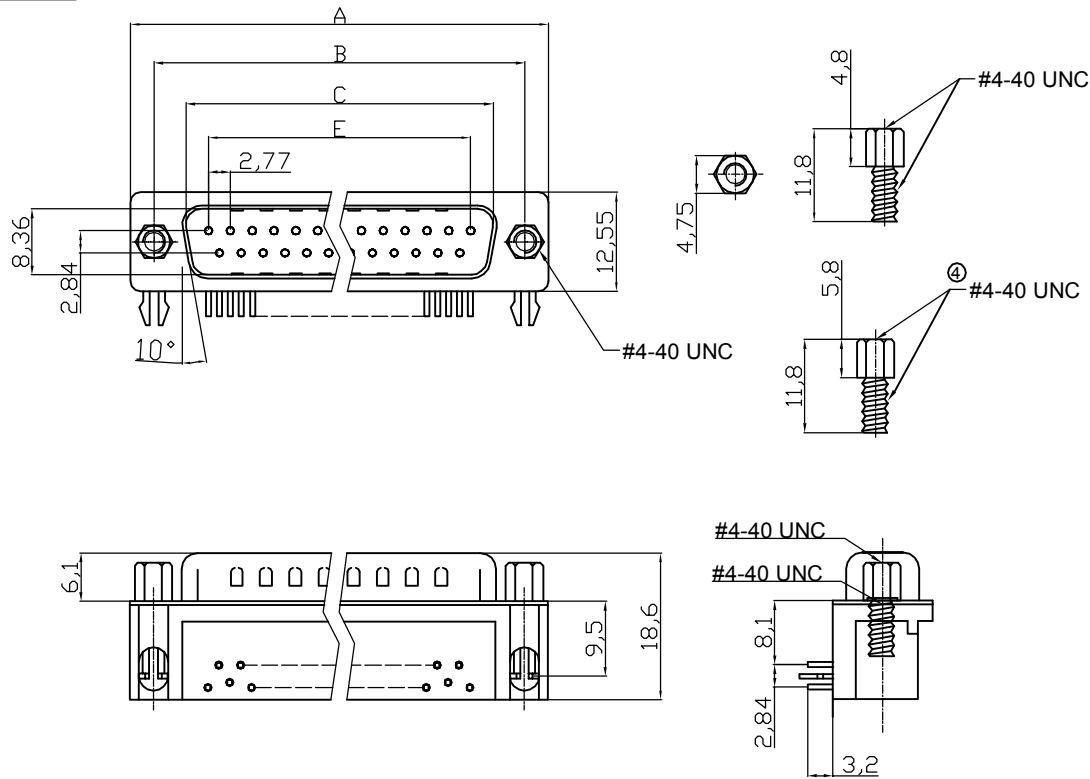
Tel: +86-755-8981 8866 Fax: +86-755-8427 6832

Email & Skype: info@chipsmall.com Web: www.chipsmall.com

Address: A1208, Overseas Decoration Building, #122 Zhenhua RD., Futian, Shenzhen, China



**Male**



**NOTES:**

**MATERIAL**

1. Insulator Material: Glass-Filled Thermoplastic PBT ,UL 94V-0,Black
2. Contact Material : Brass
3. Contact plating : Gold flash full gold
4. Shell : Steel,100u" Tin over 50u" min copper
5. Clinch Nut : Copper alloy, Nickel plated
6. Boardlock : Brass , Tin plated
7. Screwlock : Steel, Nickel plated

**ELECTRICAL**

1. Current Rating : 3AMP
2. Voltage Rating : 250V AC/rms 60Hz
3. Contact Resistance: 20mΩ max at 1 AMP DC
4. Insulation Resistance: 1000MΩ at 500 V DC
5. Withstand Voltage : 1000V AC/rms 60Hz for 1 minute
6. Operating Temperature: -55°C~+105°C

UL No. E149426

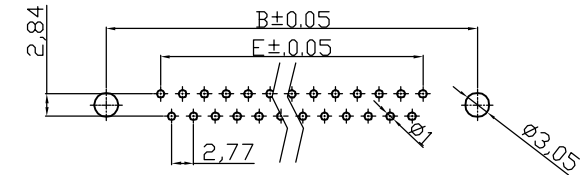
Order Code:

A-Dx xx A/KG-xx \* on request

Contact style: F - Female  
S - Male  
No. of Contacts  
09 / 15 / 25 / 37

- Version
- T2 - with locking bolts UNC (Gold flash full gold)
  - T2S - with locking bolts UNC(Gold flash selective gold)
  - T4 - without locking bolts \*(Gold flash full gold)
  - ③ T4-2 - without locking bolts \*(selective15u"Au for 9&15 poles)
  - T4S - without locking bolts \*(Gold flash selective gold)
- Standard: Quality class III
- ④ T2A - with UNC screw of 5.8mm.

**Recommended PCB Layout**



7.2mm Footprint

**Dimensions**

Positions	A	B	C	E
09	30.81	24.99	16.92	11.08
15	39.20	33.30	25.25	19.39
25	53.05	47.04	38.96	33.24
37	69.40	63.50	55.42	49.86

**RoHS compliant**

Unit: mm

Scale	Free						Date	Name	Customer-No.
TOLERANCE	④	Add the specification :T2A	13.06.2016	Winnie	Drawn	15.08.2012	Lucas		
X.	±0.38	③	Add the plating specification 15u"Au	05.03.2015	Winnie	Approved	13.06.2016	Winnie	ASSMANN WSW-No.
X.X	±0.25	②	Update the operating temperature	05.06.2014	Winnie				A-Dx xx A/KG-T2/T2S/T4/T4-2/T4S/T2A
X.XX	±0.13	①	Update	24.10.2012	Winnie				Drawing-No.
DIM	TOL	①							ASS 4888 CO rev04
X.°	±3°	①							
X.X°	±1.0°	①	Drawn	15.08.2012	Lucas				
Angle	TOL	Id.	Modification	Date	Name				Replace

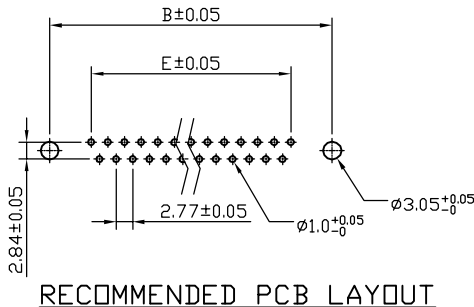
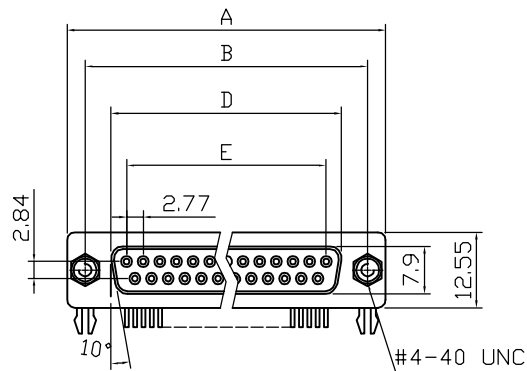


ASS 4888 CO rev04

Replace

Sheet 1/2

Female



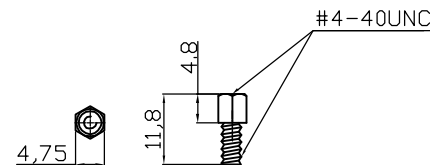
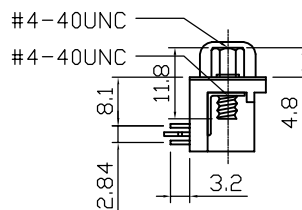
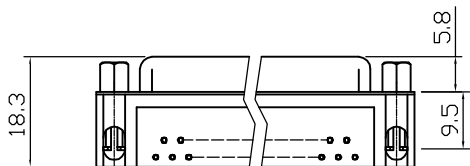
Product Specification

Material  
 Insulator : Glass-Filled thermoplastic PBT UL94V-0 Black  
 Contact : Copper alloy  
 Contact Plating : Gold flash full gold

Shell : Steel, 100u" Tin over 50u" min copper  
 Boardlock : Brass, Tin Plated  
 Screwlock : Steel, Nickel Plated

Electrical

Contact Resistance : 20 milliohms Max at 1 AMP DC.  
 Insulation Resistance : 1000 magohms at 500 VDC  
 Dielectric Withstanding Voltage : 1000 VAC/rms 60Hz for 1 minute  
 Current Rating : 3AMP  
 Volatge Rating : 250 VAC/rms 60Hz  
 ② OPERATING TEMPERATURE:-55°C+105°C  
 UL No. E149426



#4-40 unc screwlock installed

Dimensions

Positions	A	B	D	E
9	30.81	24.99	16.33	11.08
15	39.20	33.30	24.70	19.39
25	53.05	47.04	38.40	33.24
37	69.40	63.50	54.80	49.86

7.2mm Footprint

**RoHS compliant**

Unit: mm

Scale	Free						Date	Name	Customer-No.
TOLERANCE		④	Add the specification:T2A	13.06.2017	Winnie	Drawn	15.08.2012	Lucas	
X.	±0.38	③	Add the plating specification 15u"Au	05.03.2015	Winnie	Approved	13.06.2017	Winnie	
X.X	±0.25	②	Update the opeating temperature	05.06.2014	Winnie				
X.XX	±0.13	①	Update	24.10.2012	Winnie				
DIM	TOL	①							
X.°	±3°	①							
X.X°	±1.0°	①	Drawn	15.08.2012	Lucas				
Angle	TOL	Id.	Modification	Date	Name			Drawing-No.	
								ASSMANN WSW-No. A-Dx xx A/KG-T2/T2S/T4/T4-2/T4S/T2A	ASS 4888 CO
								Replace	Sheet 2/2

