



Chipsmall Limited consists of a professional team with an average of over 10 year of expertise in the distribution of electronic components. Based in Hongkong, we have already established firm and mutual-benefit business relationships with customers from,Europe,America and south Asia,supplying obsolete and hard-to-find components to meet their specific needs.

With the principle of “Quality Parts,Customers Priority,Honest Operation,and Considerate Service”,our business mainly focus on the distribution of electronic components. Line cards we deal with include Microchip,ALPS,ROHM,Xilinx,Pulse,ON,Everlight and Freescale. Main products comprise IC,Modules,Potentiometer,IC Socket,Relay,Connector.Our parts cover such applications as commercial,industrial, and automotives areas.

We are looking forward to setting up business relationship with you and hope to provide you with the best service and solution. Let us make a better world for our industry!



Contact us

Tel: +86-755-8981 8866 Fax: +86-755-8427 6832

Email & Skype: info@chipsmall.com Web: www.chipsmall.com

Address: A1208, Overseas Decoration Building, #122 Zhenhua RD., Futian, Shenzhen, China



1

2

3

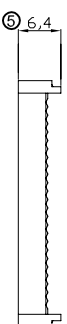
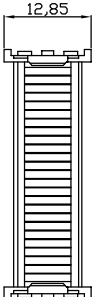
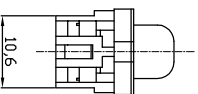
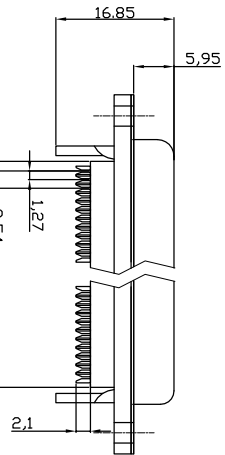
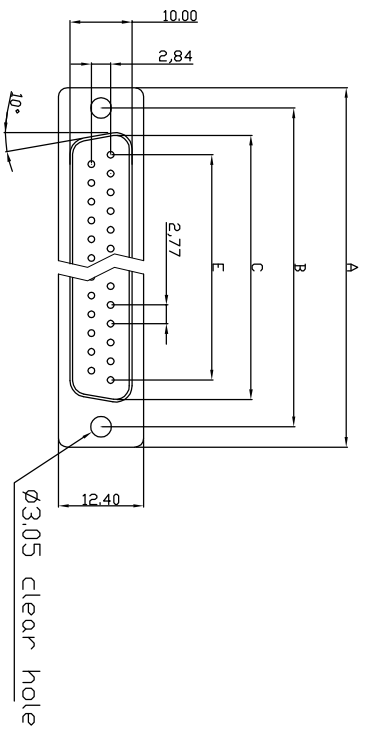
4

5

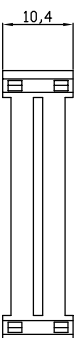
6

7

Male



Cover



Strain Relief

Dimensions

Positions	A	B	C	E	F
9	30.50	25.00	18.05	11.08	13.10
15	39.00	33.32	26.35	19.39	20.70
25	53.08	47.04	40.95	33.24	33.68
37	69.25	63.50	56.75	49.86	50.30

Product Specification

Material
 Insulator : Glass-Filled Thermoplastic PBT, UL94V-0
 Contact : Copper alloy

Electrical
 Contact Resistance : 20 milliohms Max at 1 AMP DC.
 Insulation Resistance : 1000 megohms at 500 VDC
 Dielectric Withstanding Voltage : 1000 VAC/rms 60Hz for 1 minute
 Current Rating : 3 AMP
 Voltage Rating : 250 VAC/rms 60Hz
 Wire Spec : 26 AWG-28 AWG
 Operating Temperature: -55°C ~ +105°C

Order Code:
 A-DXF xx LP1III/FP
 Contact style: — FP - Full-plastic style
 S - Male
 No. of Contacts 09 / 15 / 25 / 37
 Standard: Quality class III

With Insulator Support

ROHS compliant

Unit: mm



File No.: E198287

Scale	Free TOLERANCE	Free	Id.	Modification	Date	Name
X.	±0.38	⑤	⑤	Update the dimension	22.09.2015	Winnie
X.X	±0.25	④	④	Update the dimension	27.02.2015	Winnie
X.XX	±0.13	③	③	Update the dimension	09.07.2014	Winnie
DIM	TOL	②	②	Update the wire specification	28.06.2013	Winnie
X.°	±3°	①	①	Add the wire specification	06.03.2013	Winnie
X.X°	±1.0°	①	①	Drawn	15.08.2012	Lucas
Angle	TOL					

Customer-No.

ASSMANN WSW-No.

A-DXF xx LP1III/FP

Drawing-No.

ASS 4890 CO rev05

Replace

Sheet 1/2

1

2

3

4

5

6

7

33.68

E

D

C

B

A

H

G

F

1

2

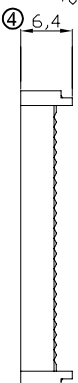
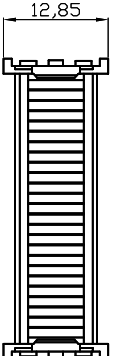
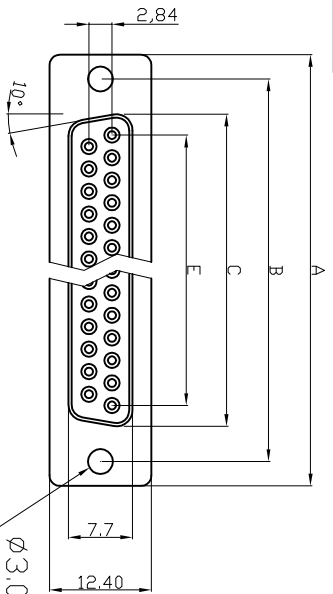
3

4

5

6

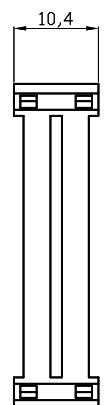
7

Female**Product Specification****Material**

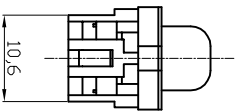
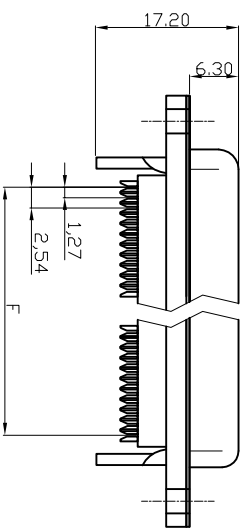
Insulator : Glass-Filled Thermoplastic PBT, UL 94V-0, Black
 Contact : Copper alloy, Gold flash selective gold

Electrical

Contact Resistance : 20 milliohms Max at 1 AMP DC.
 Insulation Resistance : 1000 megohms at 500 VDC
 Dielectric Withstanding Voltage : 1000 VAC/rms 60Hz for 1 minute
 Current Rating : 3 AMP
 Voltage Rating : 250 VAC/rms 60Hz
 Wire Spec : 26 AWG-28 AWG
 Operating Temperature: -55°C+105°C

Cover**Strain Relief**

Dimensions Positions	A	B	C	E	F
9	④ 30.50	24.99	④ 16.00	11.08	10.16
15	④ 39.00	33.30	④ 24.27	19.39	⑤ 20.70
25	53.05	47.04	④ 38.22	33.24	⑤ 33.68
37	69.40	63.50	⑤ 53.50	49.86	⑤ 50.30

**With Insulator Support****RoHS compliant**

Unit: mm



File No.: E198287

Scale	Free TOLERANCE	⑤ Update the dimension	22.09.2015	Winnie	Date	Name
X.	±0.38	④ Update the dimension	27.02.2015	Winnie	15.08.2012	Lucas
X.X	±0.25	③ Update the dimension	09.07.2014	Winnie	22.09.2015	Winnie
X.XX	±0.13	② Update the wire specification	28.06.2013	Winnie		
DIM	TOL	① Add the wire specification	06.03.2013	Winnie		
X.°	±3°	① Drawn	15.08.2012	Lucas		
X.X°	±1.0°					
Angle	TOL	Id.	Modification	Date	Name	

ASSMANN
 WSW/ components

Customer-No.
 ASSMANN WSW-No.
A-DXF XX LP111/FP
 Drawing-No.
ASS 4890 CO

Replace

rev05

Sheet 2/2

1

2

3

4

5

6

7

H

G

E

D

C

B

A

F