



Chipsmall Limited consists of a professional team with an average of over 10 year of expertise in the distribution of electronic components. Based in Hongkong, we have already established firm and mutual-benefit business relationships with customers from,Europe,America and south Asia,supplying obsolete and hard-to-find components to meet their specific needs.

With the principle of "Quality Parts,Customers Priority,Honest Operation,and Considerate Service",our business mainly focus on the distribution of electronic components. Line cards we deal with include Microchip,ALPS,ROHM,Xilinx,Pulse,ON,Everlight and Freescale. Main products comprise IC,Modules,Potentiometer,IC Socket,Relay,Connector.Our parts cover such applications as commercial,industrial, and automotives areas.

We are looking forward to setting up business relationship with you and hope to provide you with the best service and solution. Let us make a better world for our industry!



Contact us

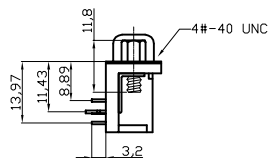
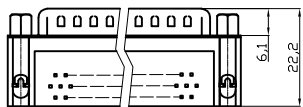
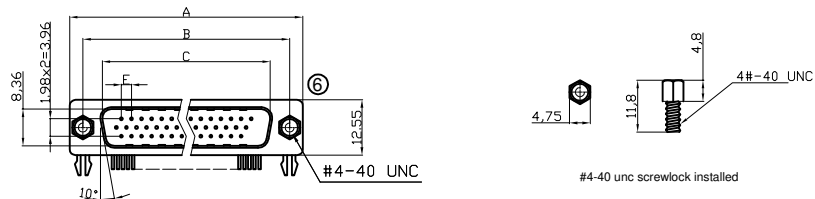
Tel: +86-755-8981 8866 Fax: +86-755-8427 6832

Email & Skype: info@chipsmall.com Web: www.chipsmall.com

Address: A1208, Overseas Decoration Building, #122 Zhenhua RD., Futian, Shenzhen, China

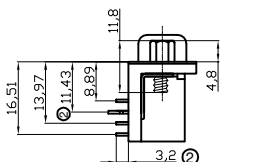
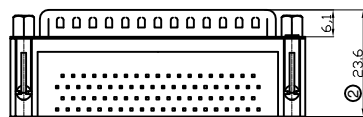
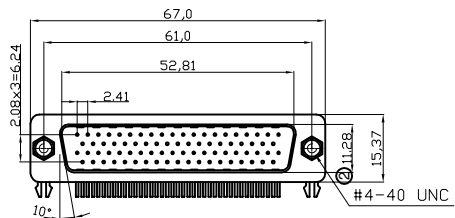


Male



Dimensions

Positions	A	B	C	E
15	30.81	24.99	16.92	2.29
26	39.20	33.30	25.25	2.29
44	53.05	47.04	38.96	2.29
62	69.40	63.50	55.42	2.41



78 Positions

Product Specification

Material

Insulator :Glass-Filled Thermoplastic PBT,UL94V-0 rated ,Black
 Contact : Copper alloy, Gold flash full gold
 Shell : Steel,100u" Tin Over 50u" min Copper
 Clinch Nut: Brass, 100u" min Nickel Plated.
 Boardlock :Brass, 100u" min Nickel Plated.
 Screwlock :Brass, 100u" min Nickel Plated.

Electrical

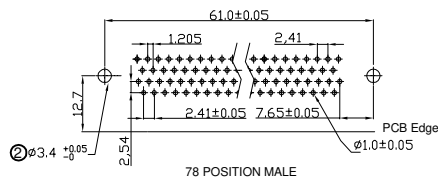
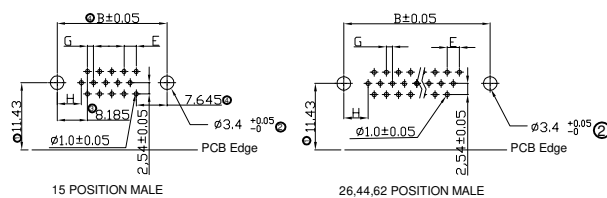
Contact Resistance :20 milliohms Max at 1 AMP DC.
 Insulation Resistance :1000 magohms at 500 VDC
 Dielectric Withstanding Voltage : 1000 VAC/rms 60Hz for 1 minute
 Current Rating :3 AMP

Volatge Rating :250 VAC/rms 60Hz
 Operating Temperature: -55°C ~ +105°C

Order Code:

A-HDx xx A-KG/T

Contact style: F - Female
 S - Male
 No. of Contacts: 15 / 26 / 44 / 62
 Standard: Quality class III



Positions	G	H
15M/F	1.145	7.04
26M/F	1.145	6.88
44M/F	1.145	6.88
62M/F	1.205	7.00

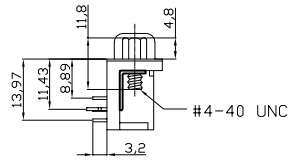
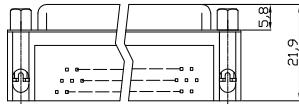
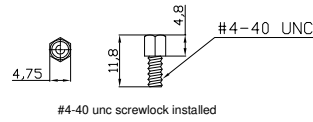
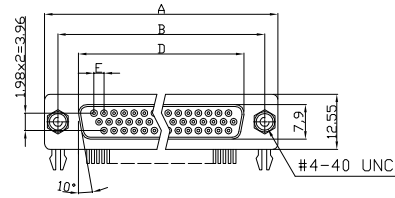
RoHS compliant

Unit: mm

Scale	Free	⑥	Update the drawing	26.07.2016	Jesse	Date	Name	Customer-No.
TOLERANCE		⑤	Update the operating temperature	27.06.2016	Winnie	Drawn	15.08.2012	ASSMANN WSW-No. A-HDx xx A-KG/T
X.	±0.38	④	Correct the PCB dimension for 15 Poles	22.03.2016	Winnie	Approved	26.07.2016	
X.X	±0.25	③	Correct the PCB dimension	09.03.2016	Winnie			
X.XX	±0.13	②	Update the dimension	27.02.2015	Winnie			
DIM	TOL	①	Add the dimension of PCB edge	19.02.2014	Ray			Drawing-No. ASS 4897 CO
X.°	±3°							rev06
X.X°	±1.0°							Sheet 1/3
Angle	TOL	Id.	Modification	Date	Name			Replace

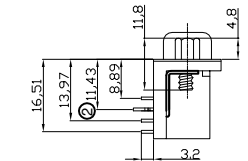
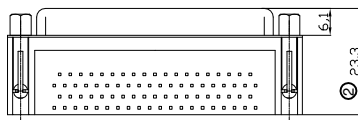
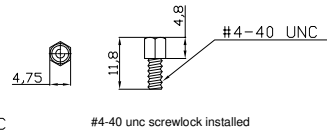
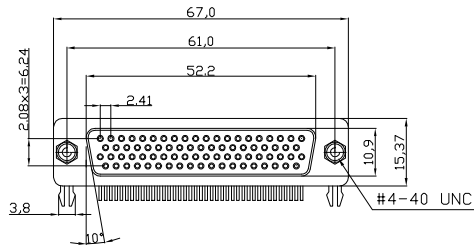


Female



Dimensions

Positions	A	B	D	E
15	30.81	24.99	16.33	2.29
26	39.20	33.30	24.70	2.29
44	53.05	47.04	38.40	2.29
62	69.40	63.50	54.80	2.41



78 Positions

Product Specification

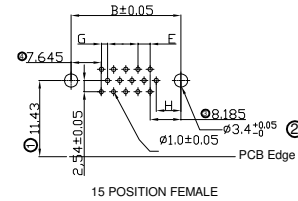
Material

Insulator :Glass-Filled Thermoplastic PBT,UL94V-0 rated ,Black
 Contact : Copper alloy, Gold flash full gold
 Shell : Steel,100u" Tin Over 50u" min Copper
 Clinch Nut: Brass, 100u" min Nickel Plated.
 Boardlock :Brass, 100u" min Nickel Plated.
 Screwlock :Brass, 100u" min Nickel Plated.

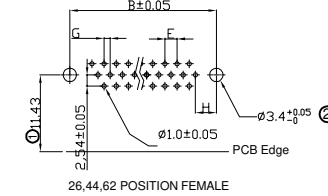
Electrical

Contact Resistance :20 milliohms Max at 1 AMP DC.
 Insulation Resistance :1000 magohms at 500 VDC
 Dielectric Withstanding Voltage : 1000 VAC/rms 60Hz for 1 minute
 Current Rating :3 AMP
 Volatge Rating :250 VAC/rms 60Hz
 ⑤ OPERATING TEMPERATURE:-55°C+105°C

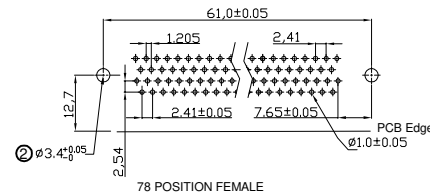
P.C.B LAYOUT PATTERN



15 POSITION FEMALE



26,44,62 POSITION FEMALE



78 POSITION FEMALE

Positions	G	H
15M/F	1.145	7.04
26M/F	1.145	6.88
44M/F	1.145	6.88
62M/F	1.205	7.00

RoHS compliant
Unit: mm

Scale	Free	⑥	Update the drawing	26.07.2016	Jesse	Date	Name	Customer-No.
TOLERANCE		⑤	Update the operating temperature	27.06.2016	Winnie	Drawn	15.08.2012	Lucas
X.	±0.38	④	Correct the PCB dimension for 15 Poles	22.03.2016	Winnie	Approved	26.07.2016	Jesse
X.X	±0.25	③	Correct the PCB dimension	09.03.2016	Winnie			
X.XX	±0.13	②	Update the dimension	27.02.2015	Winnie			
DIM	TOL	①	Add the dimension of PCB edge	19.02.2014	Ray			
X.°	±3°							
X.X°	±1.0°							
Angle	TOL	Id.	Modification	Date	Name			

ASSMANN WSW-No.
A-HDx xx A-KG/T

Drawing-No.
ASS 4897 CO rev06
Replace Sheet 2/3

	1	2	3	4	5	6	7	
--	---	---	---	---	---	---	---	--

A

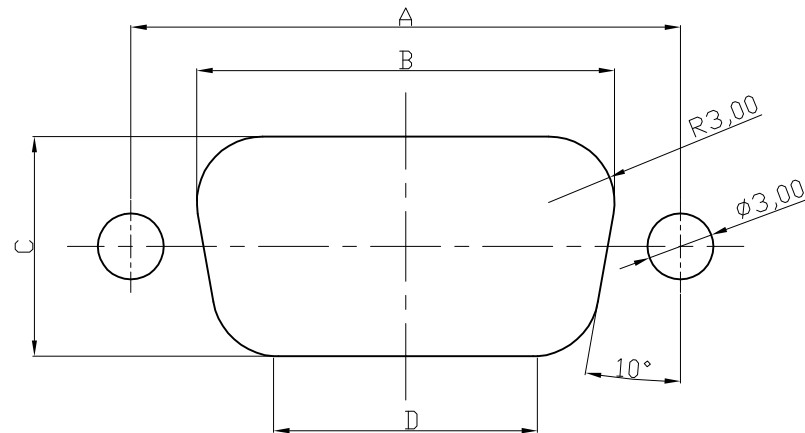
B

C

D

E

F



Recommended Panel Cut-Out

POSITION	A	B	C	D
15	24.99	20.47	10.67	12.01
26	33.30	28.80	10.67	20.35
44	47.04	42.52	10.67	34.06
62	63.50	59.08	10.67	50.62
78	61.00	56.34	14.10	46.90

RoHS compliant
Unit: mm

Scale	Free	⑥	Update the drawing	26.07.2016	Jesse		Date	Name	Customer-No.
TOLERANCE		⑤	Update the operating temperature	27.06.2016	Winnie	Drawn	15.08.2012	Lucas	ASSMANN WSW-No. A-HDx xx A-KG/T
X.	±0.15	④	Correct the PCB dimension for 15 Poles	22.03.2016	Winnie	Approved	26.07.2016	Jesse	
X.X	±0.10	③	Correct the PCB dimension	09.03.2016	Winnie				
X.XX	±0.05	②	Update the dimension	27.02.2015	Winnie	ASSMANN WSW components			Drawing-No.
DIM	TOL	①	Add the dimension of PCB edge	19.02.2014	Ray				ASS 4897 CO
X.°	±3°								Sheet 3/3
X.X°	±1.0°	①				Replace			
Angle	TOL	Id.	Modification	Date	Name				

G

H

	1	2	3	4	5	6	7	
--	---	---	---	---	---	---	---	--