



Chipsmall Limited consists of a professional team with an average of over 10 year of expertise in the distribution of electronic components. Based in Hongkong, we have already established firm and mutual-benefit business relationships with customers from,Europe,America and south Asia,supplying obsolete and hard-to-find components to meet their specific needs.

With the principle of "Quality Parts,Customers Priority,Honest Operation,and Considerate Service",our business mainly focus on the distribution of electronic components. Line cards we deal with include Microchip,ALPS,ROHM,Xilinx,Pulse,ON,Everlight and Freescale. Main products comprise IC,Modules,Potentiometer,IC Socket,Relay,Connector.Our parts cover such applications as commercial,industrial, and automotives areas.

We are looking forward to setting up business relationship with you and hope to provide you with the best service and solution. Let us make a better world for our industry!



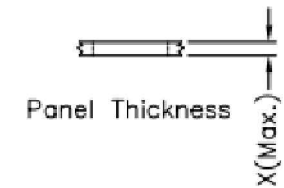
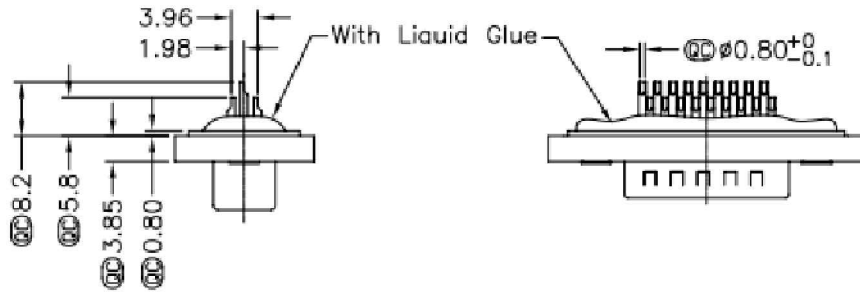
Contact us

Tel: +86-755-8981 8866 Fax: +86-755-8427 6832

Email & Skype: info@chipsmall.com Web: www.chipsmall.com

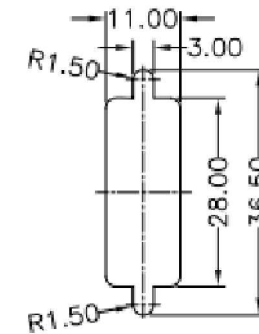
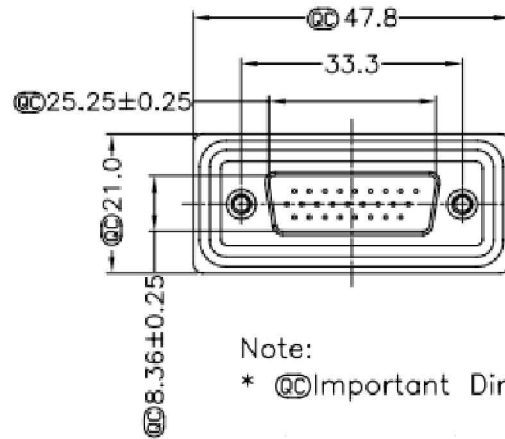
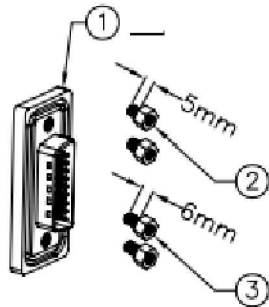
Address: A1208, Overseas Decoration Building, #122 Zhenhua RD., Futian, Shenzhen, China



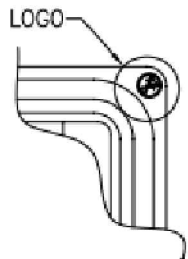


Screw L=5.0 For Panel Thickness Under 1.2mm

Screw L=6.0 For Panel Thickness Between 1.2~2.0mm



Recommended Panel Cut-Out



Note:

* @C Important Dimension.

* Waterproof Rate : IP67

* Connector:Black,Nylon+GF

* Pin:Copper Alloy,Gold Plated

* Do Mating Test After Glued

* Applicable Wire Range: 24AWG-28AWG

RoHS compliant
UNIT:mm

Scale	Free						Date	Name	Customer-No.	
TOLERANCE						Drawn	17.02.2014	Joanna	ASSMANN WSW-No. A-HDS26LL-WP	
	±0.25					Approved	17.02.2014	Joanna		
DIM	TOL								Drawing-No.	
X.°	±X°								ASS 6252 CO	rev00
X.X°	±X°	@	Drawn	17.02.2014	Joanna				Replace	Sheet
Angle	TOL	Id.	Modification	Date	Name					