



Chipsmall Limited consists of a professional team with an average of over 10 year of expertise in the distribution of electronic components. Based in Hongkong, we have already established firm and mutual-benefit business relationships with customers from,Europe,America and south Asia,supplying obsolete and hard-to-find components to meet their specific needs.

With the principle of “Quality Parts,Customers Priority,Honest Operation,and Considerate Service”,our business mainly focus on the distribution of electronic components. Line cards we deal with include Microchip,ALPS,ROHM,Xilinx,Pulse,ON,Everlight and Freescale. Main products comprise IC,Modules,Potentiometer,IC Socket,Relay,Connector.Our parts cover such applications as commercial,industrial, and automotives areas.

We are looking forward to setting up business relationship with you and hope to provide you with the best service and solution. Let us make a better world for our industry!



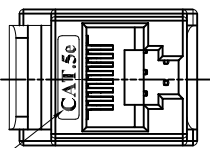
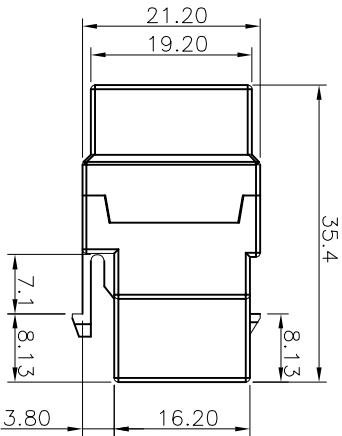
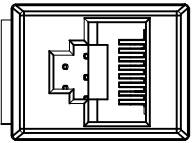
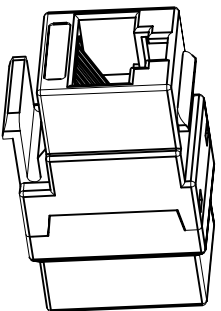
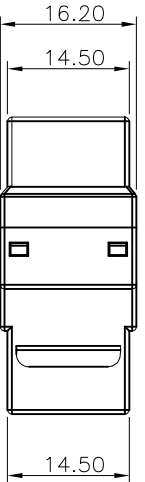
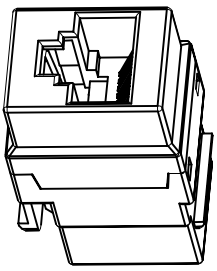
Contact us

Tel: +86-755-8981 8866 Fax: +86-755-8427 6832

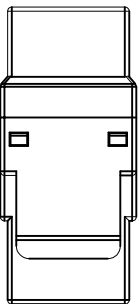
Email & Skype: info@chipsmall.com Web: www.chipsmall.com

Address: A1208, Overseas Decoration Building, #122 Zhenhua RD., Futian, Shenzhen, China





LOGO ABOVE THE SURFACE 0.20mm



Frequency	Near-End Cross Talk dB, MIN.	Return Loss dB, MIN.	Attenuation dB, MAX.
1.0 MHz	65.0	35.5	0.1
4.0 MHz	65.0	35.5	0.1
8.0 MHz	64.9	35.5	0.1
10.0 MHz	63.0	35.5	0.1
16.0 MHz	56.9	35.5	0.2
20.0 MHz	57.0	34.0	0.2
25.0 MHz	55.0	32.0	0.2
31.25 MHz	53.1	30.1	0.2
62.5 MHz	47.1	24.0	0.3
100.0 MHz	43.0	20.0	0.4

MECHANICAL:

- 1. HOUSING MATERIAL : PC UL94V-0
- 2. INSERT MATERIAL : GLASS FILLED POLYESTER UL94V-0 BK.
- 3. PCB MATERIAL : FR-4 THICKNESS 1.6mm
- 4. CONTACT MATERIAL : PHOSPHOR BRONZE STAMP PIN t=0.35mm

ENVIRONMENTAL:

- 1. STORAGE: -40°C TO +85°C.
- 2. OPERATION: 0°C TO 70°C.
- CONFORMING TO TIA/EIA 568B
- MATES WITH MODULAR PLUG CONFORMING TO FCC PART 68, SUBPART F.

RoHS compliant
Unit: mm



Scale	Free TOLERANCE	Free TOL	Free Id.	Date	Name	Customer-No.
.X	±0.20	±5°	① Add UL	24.03.2017	Amy	ASSMANN WSW-No. A-TA3534
.XX	±0.15		② Drawn	02.07.2013	Winnie	ASSMANN WSW-No. ASS 5822 CO rev01
.XXX	±0.10			24.03.2017	Amy	
DIM	TOL					
Angle						
Angle						

ASSMANN
WSW components

1 2 3 4 5 6 7

CON031