



Chipsmall Limited consists of a professional team with an average of over 10 year of expertise in the distribution of electronic components. Based in Hongkong, we have already established firm and mutual-benefit business relationships with customers from,Europe,America and south Asia,supplying obsolete and hard-to-find components to meet their specific needs.

With the principle of "Quality Parts,Customers Priority,Honest Operation,and Considerate Service",our business mainly focus on the distribution of electronic components. Line cards we deal with include Microchip,ALPS,ROHM,Xilinx,Pulse,ON,Everlight and Freescale. Main products comprise IC,Modules,Potentiometer,IC Socket,Relay,Connector.Our parts cover such applications as commercial,industrial, and automotives areas.

We are looking forward to setting up business relationship with you and hope to provide you with the best service and solution. Let us make a better world for our industry!



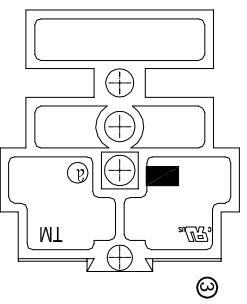
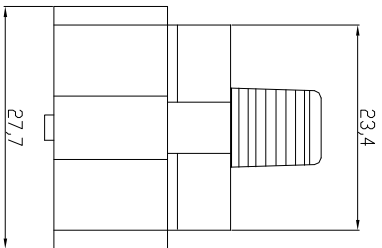
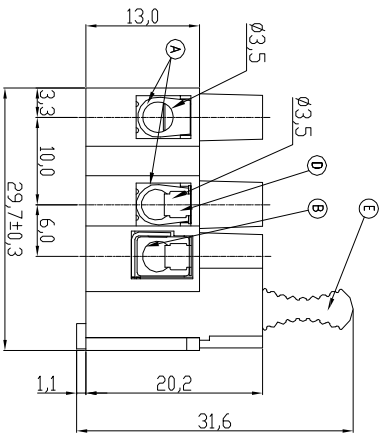
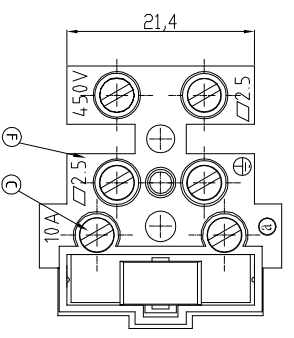
Contact us

Tel: +86-755-8981 8866 Fax: +86-755-8427 6832

Email & Skype: info@chipsmall.com Web: www.chipsmall.com

Address: A1208, Overseas Decoration Building, #122 Zhenhua RD., Futian, Shenzhen, China







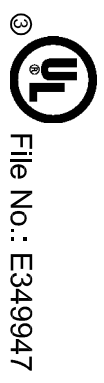
Material

- Ⓐ Terminal body(metal housing of double): Brass(CuZn),Ni plated
- Ⓑ Terminal body(metal housing of single): Brass(CuZn),Ni plated
- Ⓒ Terminal screw: Steel Zinc plating "I" slot type
- Ⓓ Wire guard: Stainless steel
- Ⓔ Insulator (lever): Thermoplastic (UL94V-0)
- Ⓕ Insulator (housing): Thermoplastic (UL94V-0)

Electrical

cULus VDE
 Voltage rating: 400VAC / 450VAC
 Current rating: 10A / 24A
 Wire range: 0.34-2.5mm²
 Solid wire(AWG): 14-22
 Stranded wire(AWG):14-22
 Torque(Lb-In): 3.5 / 0.5
 Screw: M3
 Wire strip length: 7-8mm
 Withstanding Voltage: 1.8KV/2.5KV
 Operating temperature: -40°C to +115°C
 Safety Approval:  

RoHS compliant
 Unit: mm



Scale	Free
TOLERANCE	
X.	±0.50
X.X	±0.30
X.XX	±0.10
DIM	TOL
X.°	±1°
Angle	TOL

Id.	Modification	Date	Name
③	Update to new drawing and add UL	15.03.2016	Amy
②	Updating	19.04.2010	Alex
①	Drawn	16.06.2006	Hellwig

ASSMANN
 WSW components

Date	Name	Customer-No.
16.06.2006	Hellwig	ASSMANN WSW-No. A-TB100-TM03
15.03.2016	Amy	

Drawing-No. ASS 2011C CO rev03

Replace Sheet

1	2	3	4	5	6	7	A
1	2	3	4	5	6	7	B
1	2	3	4	5	6	7	C
1	2	3	4	5	6	7	D
1	2	3	4	5	6	7	E
1	2	3	4	5	6	7	F
1	2	3	4	5	6	7	G
1	2	3	4	5	6	7	H