



Chipsmall Limited consists of a professional team with an average of over 10 year of expertise in the distribution of electronic components. Based in Hongkong, we have already established firm and mutual-benefit business relationships with customers from,Europe,America and south Asia,supplying obsolete and hard-to-find components to meet their specific needs.

With the principle of "Quality Parts,Customers Priority,Honest Operation,and Considerate Service",our business mainly focus on the distribution of electronic components. Line cards we deal with include Microchip,ALPS,ROHM,Xilinx,Pulse,ON,Everlight and Freescale. Main products comprise IC,Modules,Potentiometer,IC Socket,Relay,Connector.Our parts cover such applications as commercial,industrial, and automotives areas.

We are looking forward to setting up business relationship with you and hope to provide you with the best service and solution. Let us make a better world for our industry!



Contact us

Tel: +86-755-8981 8866 Fax: +86-755-8427 6832

Email & Skype: info@chipsmall.com Web: www.chipsmall.com

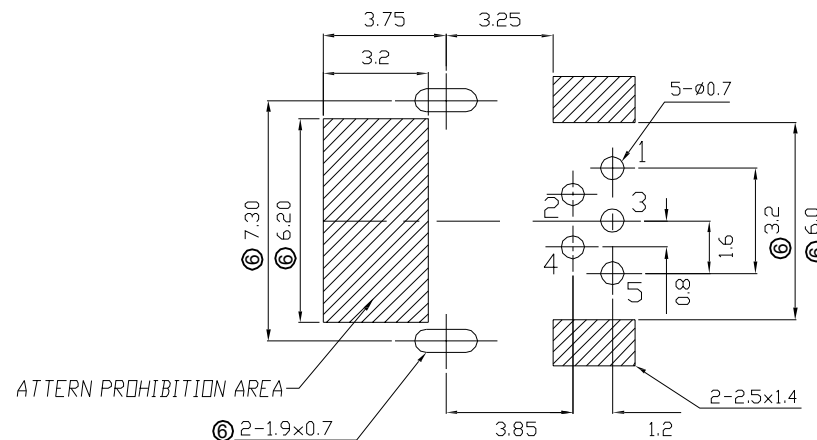
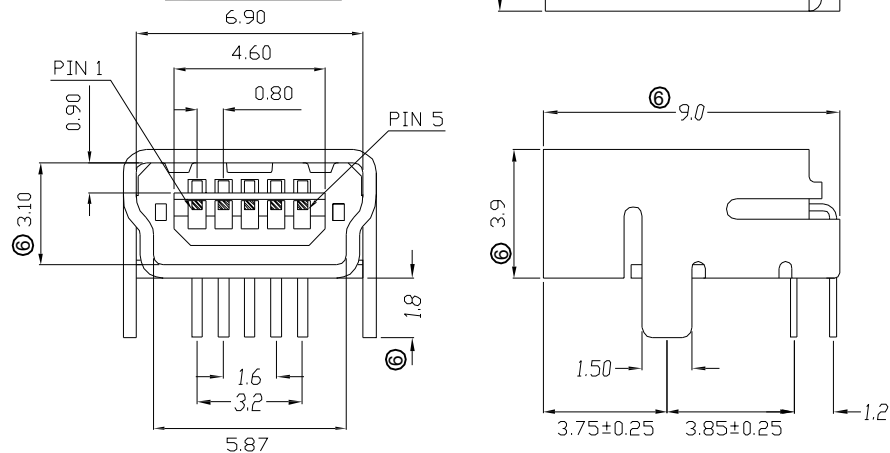
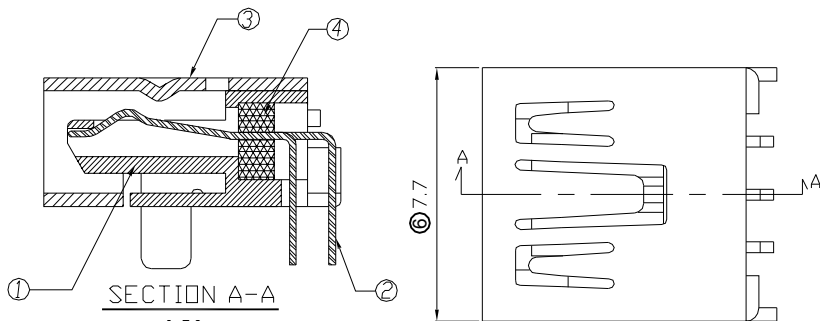
Address: A1208, Overseas Decoration Building, #122 Zhenhua RD., Futian, Shenzhen, China



⑤ **USB2.0 COMPLIANT**

NOTES:

- ⑥ 1.Contact Resistance: 50m ohm.Max
- ⑥ 2.Insulation Resistance: 100M ohm Min . At 500VDC
- ⑥ 3.Rating Voltage and Current :1A at 30VAC Min.
- ⑥ 4.Dielectric Withstanding Voltage :100V AC for 1minutes
- ⑥ 5.Durability : 1500 cycles
- ⑥ 6.Insertion force : 35N Max.
- ⑥ 7.Extraction force:7N Min
- ⑥ 6.Temperature range: -40°C~+60°C
- ⑥ Packing: Tray



NO	NAME	MATERIAL	FINISH	Q'TY	REMARK
⑥ 1	HOUSING	NYLON PA9T G.F	BLACK	1	
2	PIN TERM.	PBS T:0.2	GOLD/TIN PLATED	5	Gold:30u"; NI:40~60u"; TIN:120u" (100% pure Tin of lead free plating)
3	SHELL	BRASS T:0.4	NICKEL PLATED	1	Ni:80~120u"
4	CENTER PASTERN	NYLON PA9T G.F	BLACK	1	

RECOMMENDED PCB PATTERN LAYOUT
(PCB THICKNESS:0.8±0.1)

RoHS compliant

Scale	1:1	⑥	Update	30.03.2018	Winnie		Date	Name	Customer-No.		
TOLERANCE		⑤	Update	19.08.2013	Winnie	Drawn	03.07.2003	Hellwig	ASSMANN WSW-No. A-USB B-M5-C		
.X	±0.30	④	Add the Packing	04.06.2013	Winnie	Approved	30.03.2018	Winnie			
.XX	±0.20	③	Temperature range add in	24.07.2012	Lucas						
.XXX	±0.10	②	Modify drawing	07.07.2009	Dean				Drawing-No.		
DIM	TOL	①	Drawn	03.07.2003	Hellwig				ASS 1455 CO	rev06	
X.°	±1°										
Angle	TOL										
UNIT	mm	Id.	Modification	Date	Name				Replace	SHEET	