



Chipsmall Limited consists of a professional team with an average of over 10 year of expertise in the distribution of electronic components. Based in Hongkong, we have already established firm and mutual-benefit business relationships with customers from,Europe,America and south Asia,supplying obsolete and hard-to-find components to meet their specific needs.

With the principle of “Quality Parts,Customers Priority,Honest Operation,and Considerate Service”,our business mainly focus on the distribution of electronic components. Line cards we deal with include Microchip,ALPS,ROHM,Xilinx,Pulse,ON,Everlight and Freescale. Main products comprise IC,Modules,Potentiometer,IC Socket,Relay,Connector.Our parts cover such applications as commercial,industrial, and automotives areas.

We are looking forward to setting up business relationship with you and hope to provide you with the best service and solution. Let us make a better world for our industry!



Contact us

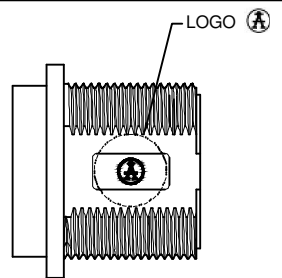
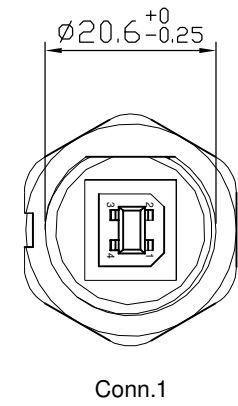
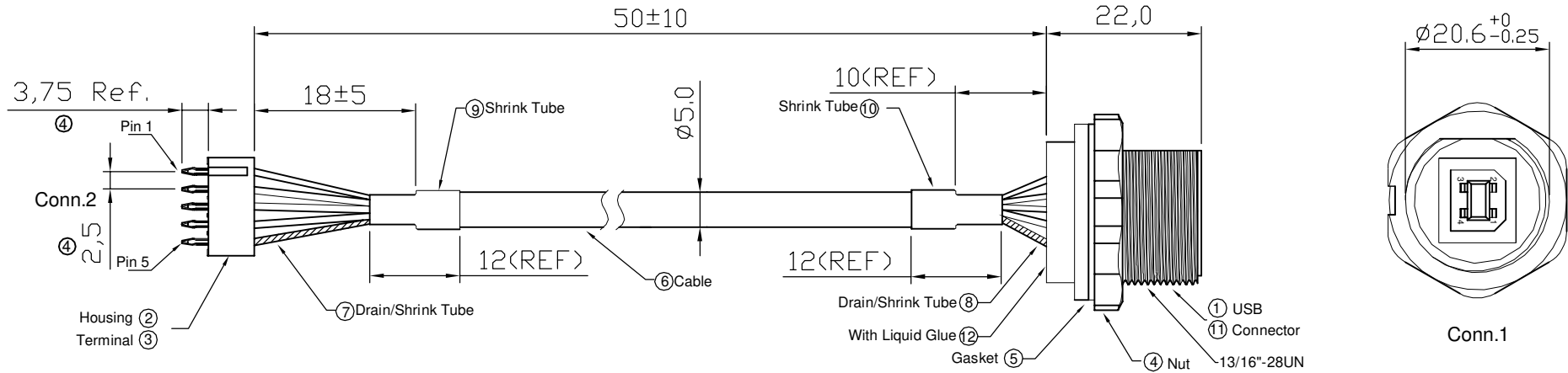
Tel: +86-755-8981 8866 Fax: +86-755-8427 6832

Email & Skype: info@chipsmall.com Web: www.chipsmall.com

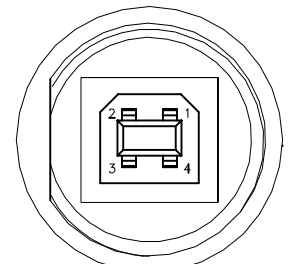
Address: A1208, Overseas Decoration Building, #122 Zhenhua RD., Futian, Shenzhen, China



USB 2.0 COMPLIANT
Waterproof Rate: IP67

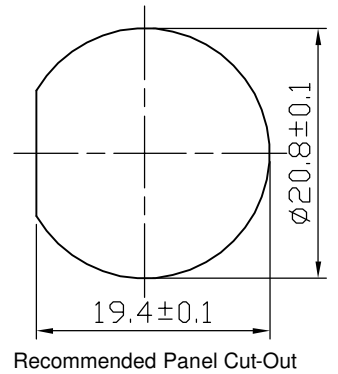


5	Drain(28AWG)	Shelled
4	Black(24AWG)	4
3	Green(28AWG)	3
2	White(28AWG)	2
1	Red(24AWG)	1
Conn.2	Wire Color	Conn.1



Note:
 1.Connector: ABS 94V-0. Black
 2.USB: USB B Type, Female TIP
 3.Housing: 25020101-05
 4.Cable: USB2.0 28AWGx1P+
 24AWGx2C+AL.My+D+B UV Resistant,
 Black,OD=5.0mm

RoHS compliant



Scale	Free	⑥	Add USB 2.0 compliant	27.08.2012	Ray	Date	Name	Customer-No.
TOLERANCE		⑤	Add PCB layout and Pin detail	16.07.2012	Lucas	Drawn	20.08.2004	Hellwig
±0.5		④	Dimension add in	11.07.2012	Lucas	Approved	16.07.2012	Joanna
		③	Modify drawing	07.07.2009	Dean			
		②	Update	22.09.2008	N.Schulz			
		①	Drawn	20.08.2004	Hellwig			
		Id.	Modification	Date	Name			

ASSMANN WSW-No. A-USB-BPFS	
Drawing-No. ASS 1576A CA	rev06
Replace	Sheet 1/1

1

2

3

4

5

6

7