



Chipsmall Limited consists of a professional team with an average of over 10 year of expertise in the distribution of electronic components. Based in Hongkong, we have already established firm and mutual-benefit business relationships with customers from,Europe,America and south Asia,supplying obsolete and hard-to-find components to meet their specific needs.

With the principle of “Quality Parts,Customers Priority,Honest Operation,and Considerate Service”,our business mainly focus on the distribution of electronic components. Line cards we deal with include Microchip,ALPS,ROHM,Xilinx,Pulse,ON,Everlight and Freescale. Main products comprise IC,Modules,Potentiometer,IC Socket,Relay,Connector.Our parts cover such applications as commercial,industrial, and automotives areas.

We are looking forward to setting up business relationship with you and hope to provide you with the best service and solution. Let us make a better world for our industry!



## Contact us

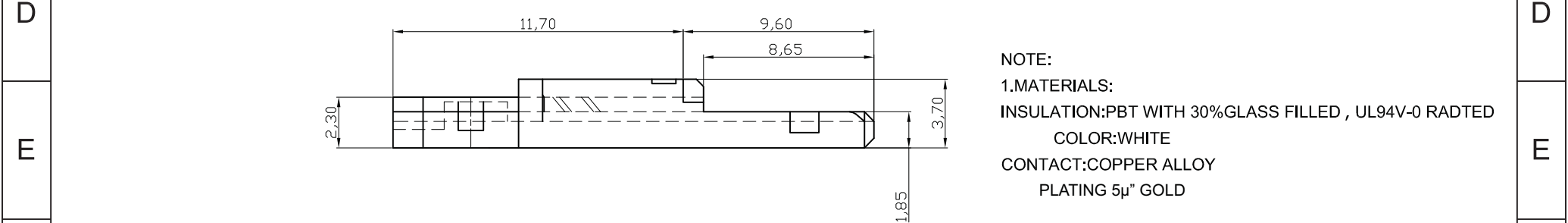
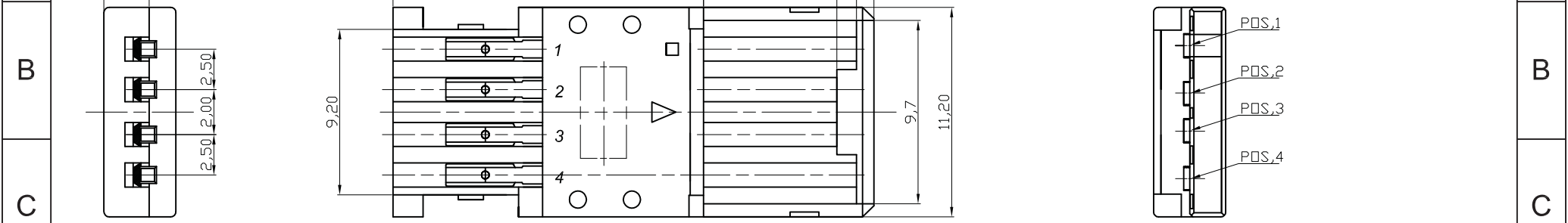
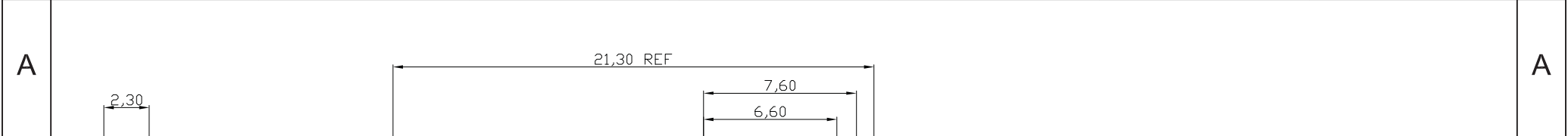
Tel: +86-755-8981 8866 Fax: +86-755-8427 6832

Email & Skype: info@chipsmall.com Web: www.chipsmall.com

Address: A1208, Overseas Decoration Building, #122 Zhenhua RD., Futian, Shenzhen, China



1 2 3 4 5 6 7



NOTE:  
 1.MATERIALS:  
 INSULATION:PBT WITH 30%GLASS FILLED , UL94V-0 RADTED  
 COLOR:WHITE  
 CONTACT:COPPER ALLOY  
 PLATING 5µ" GOLD



Unit: mm



Scale	Free					Date	Name	Title	
TOLERANCE						Drawn	10.04.12	Miller	ASSMANN WSW-No. <b>A-USBPA-R</b>
.XX	±0.10					Approved	12.02.13	Groll	
.X	±0.20								Drawing-No.
X.	±0.50								rev01
XX.	±1								
DIM	TOL								Sheet 1/4
		①	Tooling modification	12.02.13	Wilson	 1840 W. Drake Drive, Suite 101 • Tempe, AZ 85283 Toll Free: 1-877-277-6266 • Email: info@assmann.us			
Angle	TOL	Id.	Modification	Date	Name			Replace	

1 2 3 4 5 6 7

1

2

3

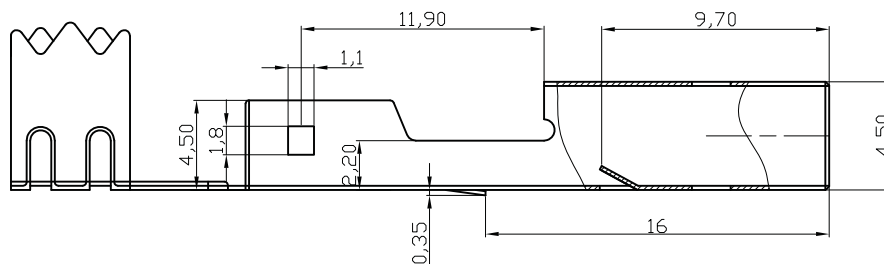
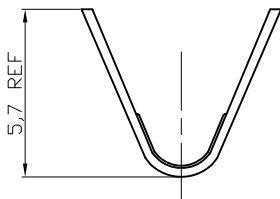
4

5

6

7

A



SECTION A-A

B

B

C

C

NOTE:

1.0.MATERIALS:

1.1.COLD ROLL STEEL. t=0.35mm

2.0.FINISHES:

2.1.5.0um Min.BRIGHT TIN/LEAD(9:1) OVER 5.0um Min.COPPER

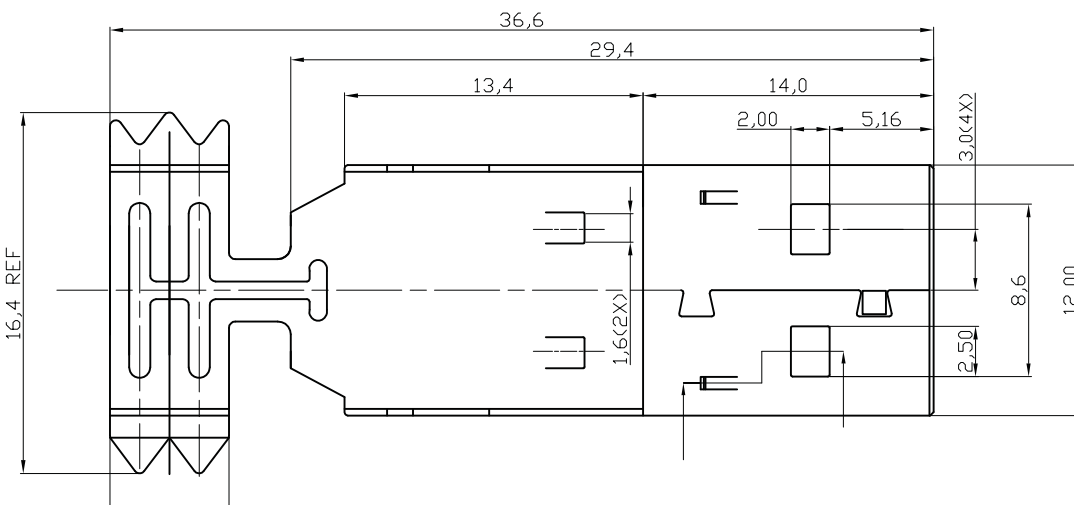
2.2.3.0um-5.0um NICKEL OVER 5.0um Min.COPPER

2.3.1.5u" Min.Au+80~150U".NICKEL+100U"Min.COPPER

2.4.3.0um-5.0um NICKEL OVER 5.0um Min.COPPER(SPECIAL PLATED)

④ 3.0. APPLICATION CABLE SPEC:

UL CSA Type	AWG Signal wires Power wires	Jacket OD.	Cable length(max.)
UL CM UL FT4	28AWG x 1T.P. 28AWG x 2Cores	4.2mm	0.81m
	28AWG x 1T.P. 26AWG x 2Cores	4.4mm	1.31m
	28AWG x 1T.P. 24AWG x 2Cores	4.7mm	2.08m
	28AWG x 1T.P. 22AWG x 2Cores	5.0mm	3.33m
	28AWG x 1T.P. 20AWG x 2Cores	5.0mm	5.00m



E

E

F

F

G

G

Unit: mm



Scale	Free				Date	Name	Title
TOLERANCE					Drawn	10.04.12	Miller
.XX	±0.10				Approved	12.02.13	Groll
.X	±0.20						
X.	±0.50						
XX.	±1						
DIM	TOL						
		①	Tooling modification	12.02.13	Wilson		
Angle	TOL	Id.	Modification	Date	Name		



1840 W. Drake Drive, Suite 101 • Tempe, AZ 85283  
Toll Free: 1-877-277-6266 • Email: info@assmann.us

ASSMANN WSW-No.		A-USBPA-R	
Drawing-No.		rev01	
Replace	Sheet		2/4

1

2

3

4

5

6

7

H

H

1

2

3

4

5

6

7

A

B

C

D

E

F

G

H

A

B

C

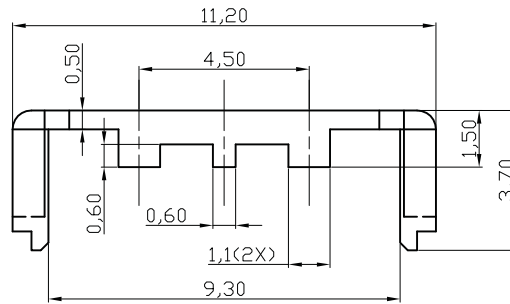
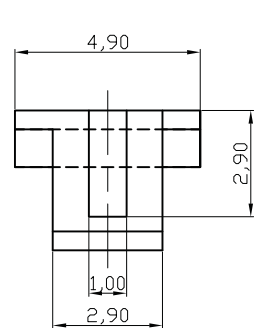
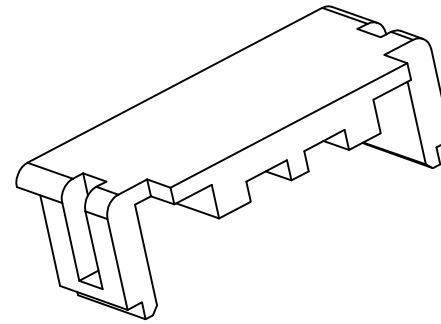
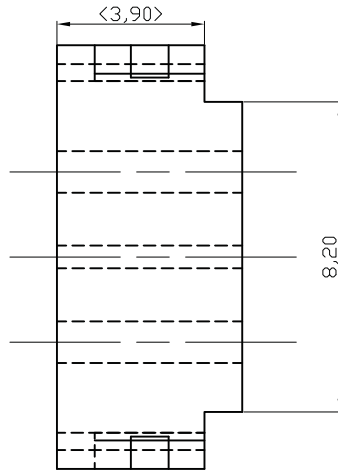
D

E

F

G

H



NOTE:

1.MATERIAL:PBT WITH 30%GLASS FILLED,UL 90V-0 RATED

Unit: mm



Scale	Free					Date	Name	Title		
TOLERANCE						Drawn	10.04.12	Miller	ASSMANN WSW-No. <b>A-USBPA-R</b>	
.XX	±0.10					Approved	12.02.13	Groll		
.X	±0.20								Drawing-No. <b>rev01</b>	
X.	±0.50									
XX.	±1								Replace Sheet 3/4	
DIM	TOL									
		①	Tooling modification	12.02.13	Wilson					
Angle	TOL	Id.	Modification	Date	Name			<small>1840 W. Drake Drive, Suite 101 • Tempe, AZ 85283 Toll Free: 1-877-277-6266 • Email: info@assmann.us</small>		

1

2

3

4

5

6

7

1

2

3

4

5

6

7

A

A

B

B

C

C

D

D

E

E

F

F

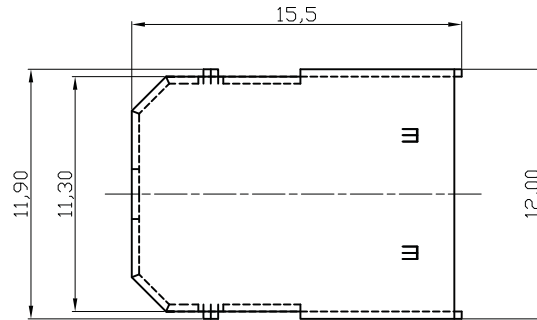
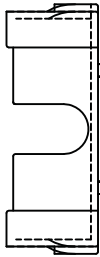
G

G

H

H

VIEW A



NOTE:

1.0.MATERIALS:

1.1.COLD ROLL STEEL. t=0.35mm

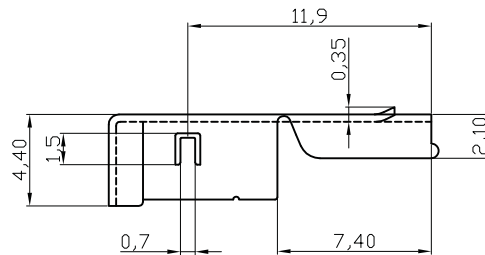
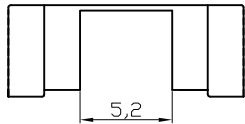
2.0.FINISHES:

2.1.5.0um Min.BRIGHT TIN/LEAD(9:1) OVER 5.0um Min.COPPER

2.2.3.0um-5.0um NICKEL OVER 5.0um Min.COPPER

2.3.1.5u" Min.Au+80~150U".NICKEL+100U"Min.COPPER

2.4.3.0um-5.0um NICKEL OVER 5.0um Min.COPPER(SPECIAL PLATED)



Unit: mm



Scale	Free					Date	Name	Title
TOLERANCE						Drawn	10.04.12	Miller
.XX	±0.10					Approved	12.02.13	Groll
.X	±0.20							
X.	±0.50							
XX.	±1							
DIM	TOL							
		①	Tooling modification	12.02.13	Wilson			
Angle	TOL	Id.	Modification	Date	Name			

ASSMANN WSW-No.		A-USBPA-R	
Drawing-No.		rev01	
Replace	Sheet		4/4

1

2

3

4

5

6

7