



Chipsmall Limited consists of a professional team with an average of over 10 year of expertise in the distribution of electronic components. Based in Hongkong, we have already established firm and mutual-benefit business relationships with customers from,Europe,America and south Asia,supplying obsolete and hard-to-find components to meet their specific needs.

With the principle of “Quality Parts,Customers Priority,Honest Operation,and Considerate Service”,our business mainly focus on the distribution of electronic components. Line cards we deal with include Microchip,ALPS,ROHM,Xilinx,Pulse,ON,Everlight and Freescale. Main products comprise IC,Modules,Potentiometer,IC Socket,Relay,Connector.Our parts cover such applications as commercial,industrial, and automotives areas.

We are looking forward to setting up business relationship with you and hope to provide you with the best service and solution. Let us make a better world for our industry!



## Contact us

Tel: +86-755-8981 8866 Fax: +86-755-8427 6832

Email & Skype: info@chipsmall.com Web: www.chipsmall.com

Address: A1208, Overseas Decoration Building, #122 Zhenhua RD., Futian, Shenzhen, China



1

2

3

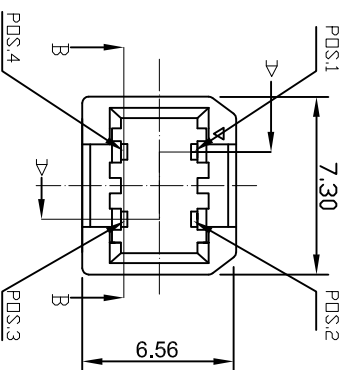
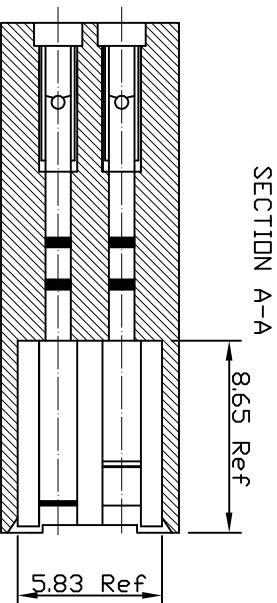
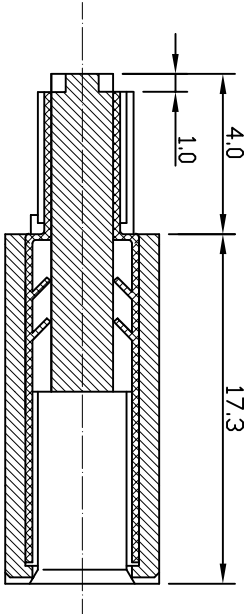
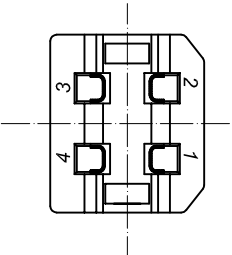
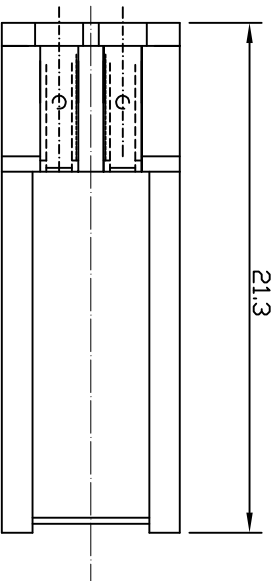
4

5

6

7

⑤ USB2.0 COMPLIANT



NOTE:  
 1. MATERIALS:  
 INSULATION: PBT 30%GLASS FILLED UL94V-0  
 COLOR: WHITE  
 COLOR: WHITE  
 CONTACT: COPPER ALLOY PREPLATEIVE 5µ" GOLD PLATED

SECTION B-B

SECTION A-A

Scale 1:1

TOLERANCE

.XX ±0.10

.X ±0.20

X. ±0.50

XX. ±1

DIM TOL

Angle TOL

⑥ Update contact plated information

⑦ Update

⑧ Add assembly instructions

⑨ Add application cable OD.

⑩ Update

⑪ Drawn

Id.

Modification

10.02.2013

27.08.2013

11.06.2012

13.03.2012

14.07.2009

20.10.2004

Date

Ray

Winnie

Lucas

Lucas

Rate

Helwig

Name

Date

20.10.2004

10.02.2014

Winnie

Helwig

Name

Customer-No.

ASSMANN WSW-No.

A-USBPB-N

Drawing-No.

ASS 1518C CO

Replace

Sheet

1 / 4

rev06

1 / 4

rev06

1 / 4

1 / 4

1 / 4

RoHS compliant

1

2

3

4

5

6

7

H

G

F

E

D

C

B

A

1

2

3

4

5

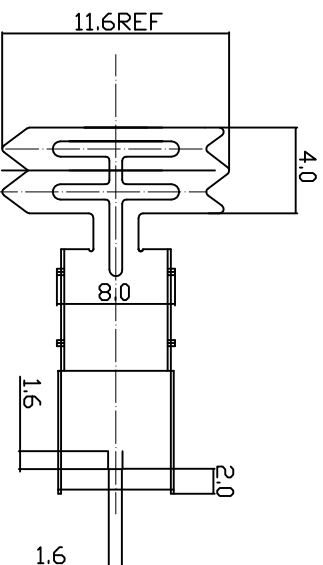
6

7

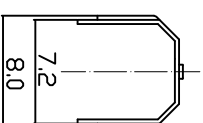
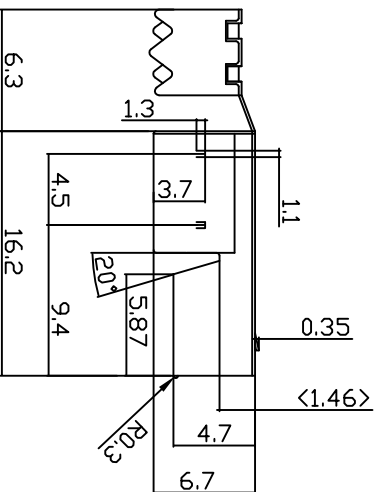
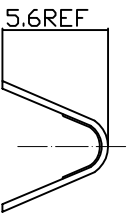
A

A

NOTE:  
 1.0.MATERIALS:  
 1.1.COLD ROLL STEEL, t=0.35mm  
 2.0.FINISHES:  
 2.1.5.0um Min. BRIGHT TIN/LEAD(9:1) OVER 5.0um Min. COPPER  
 2.2.3.0um-5.0um NICKEL OVER 5.0um Min. COPPER  
 2.3.1.5u" Min. Au+80~150u" NICKEL +100u"Min. COPPER  
 2.4.3.0um-5.0um NICKEL OVER 5.0um Min. COPPER(SPECIAL PLATED)  
 © 3.0.APPLICATION CABLE SPEC:



UL CSA Type	AWG Signal wires Power wires	Jackel OD.	Cable length(max.)
UL GM	28AWG x 1T.P., 28AWG x 2Cores	4.2mm	0.81m
UL FT4	28AWG x 1T.P., 26AWG x 2Cores	4.4mm	1.31m
	28AWG x 1T.P., 24AWG x 2Cores	4.7mm	2.08m
	28AWG x 1T.P., 22AWG x 2Cores	5.0mm	3.33m
	28AWG x 1T.P., 20AWG x 2Cores	5.0mm	5.00m



G

G

H

H

**RoHS compliant**

Scale	1:1	Update contact plated Information		10.02.2013	Ray	Customer-No.	
TOLERANCE		⑥	Update	27.08.2013	Winnie	ASSMANN WSW-No.	A-USBPB-N
.XX	±0.10	⑦	Add assembly instructions	11.06.2012	Lucas	Drawing-No.	ASS 1518C CO
.X	±0.20	④	Add application cable OD.	13.03.2012	Lucas	Date	20.10.2004
X.	±0.50	③	Update	14.07.2009	Rate	Name	Hellwig
XX.	±1	②	Drawn	20.10.2004	Hellwig	Replace	Sheet
DIM	TOL	①	Modification				2 / 4
Angle	TOL	Id.					



1

2

3

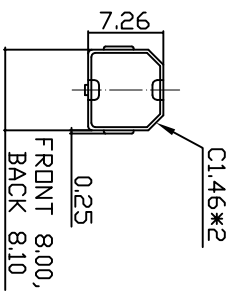
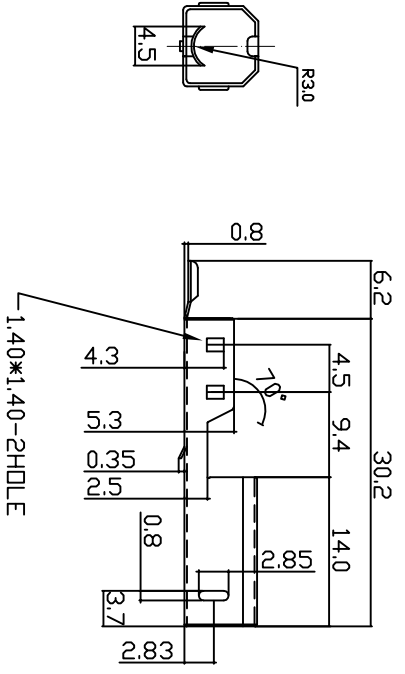
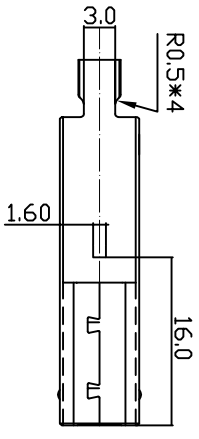
4

5

6

7

1	2	3	4	5	6	7	A
1	2	3	4	5	6	7	A
1	2	3	4	5	6	7	B
1	2	3	4	5	6	7	C
1	2	3	4	5	6	7	D
1	2	3	4	5	6	7	E
1	2	3	4	5	6	7	F
1	2	3	4	5	6	7	G
1	2	3	4	5	6	7	H



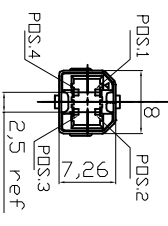
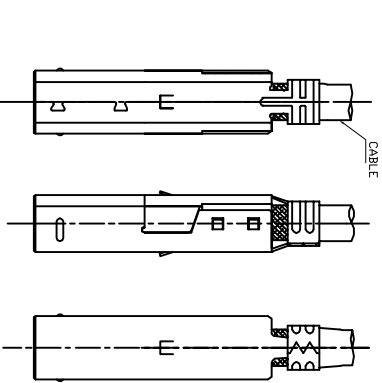
NOTE:  
 1.0.MATERIALS:  
 1.1.COLD ROLL STEEL, t=0.35mm  
 2.0.FINISHES:  
 2.1.5.0um Min.BRIGHT TIN/LEAD(9:1) OVER 5.0um Min.COPPER  
 2.2.3.0um-5.0um NICKEL OVER 5.0um Min.COPPER  
 2.3.1.5u" Min.Au+80~150U".NICKEL+100U"Min.COPPER  
 2.4.3.0um-5.0um NICKEL OVER 5.0um Min.COPPER(SPECIAL PLATED)  
 3.0.OTHER:

Scale	1:1	⑥	Update contact plated information	10.02.2013	Ray		Date	Name	Customer-No.
TOLERANCE		⑤	Update	27.08.2013	Winnie	Drawn	20.10.2004	Hellwig	ASSMANN WSW-No.
.XX	±0.10	④	Add assembly instructions	11.06.2012	Lucas	Approved	10.02.2014	Winnie	A-USBPB-N
.X	±0.20	③	Add application cable OD.	13.03.2012	Lucas				Drawing-No.
X.	±0.50	②	Update	14.07.2009	Rate				ASS 1518C CO
XX.	±1	①	Drawn	20.10.2004	Hellwig				Replace
DIM	TOL								Sheet
Angle	TOL								3 / 4

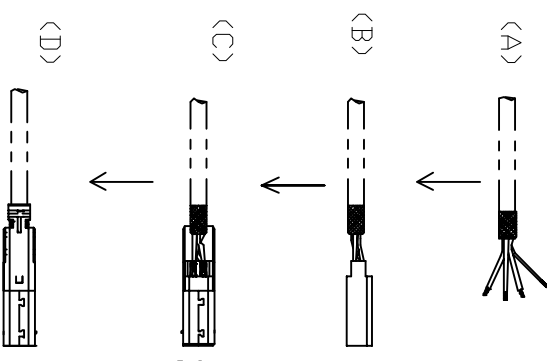
**RoHS compliant**



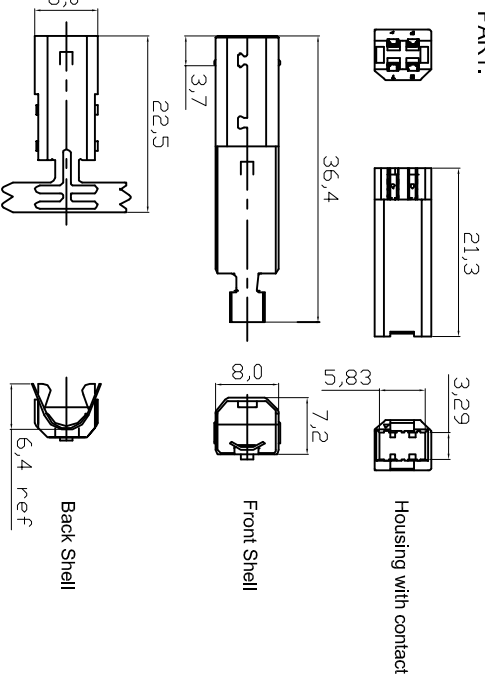
1	2	3	4	5	6	7
A	B	C	D	E	F	G
B	C	D	E	F	G	H
C	D	E	F	G	H	A
D	E	F	G	H	A	B
E	F	G	H	A	B	C
F	G	H	A	B	C	D
G	H	A	B	C	D	E
H	A	B	C	D	E	F



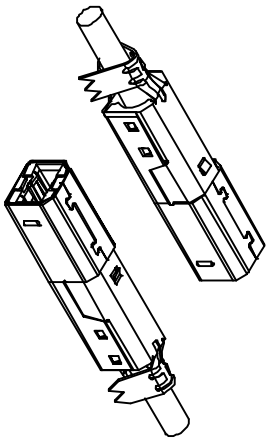
ASSEMBLY PROCESS



PART:



NOTES:  
 Rating:  
 Voltage: 30VAC (R.M.S)  
 Current: 1,5 AMPERE MINIMUM PER CONTACT AT 30°C T-RISE TEMPERATURE: -55°C TO +85°C UNLESS LIMITED BY CABLE OR OVERMOLD (-40°C TO +60°C STORAGE: 0°C TO +40 °C (OPERATING) ELECTRIC RESISTANCE: 30 MILLIOHMS MAXIMUM INITIAL INSULATION RESISTANCE: 1000 MEGOHMS MINIMUM DIELECTRIC WITHSTANDING VOLTAGE: 500VAC AT SEA LEVEL CAPACITANCE: 2 PICOFARADS MAXIMUM AT 1KHZ MODIFICATION SEAM DIRECTION CIRCUMGYRATE: 180 DEGREE



Scale	1:1	⑥	Update contact plated Information	10.02.2013	Ray				
TOLERANCE	.XX	±0,05	⑤	Update	27.08.2013	Winnie	Drawn	20.10.2004	Hellwig
	.X	±0,10	④	Add assembly instructions	11.06.2012	Lucas	Approved	10.02.2014	Winnie
X.	±0,15		③	Add application cable OD.	13.03.2012	Lucas			
DIM	TOL		②	Update	14.07.2009	Rale			
X°	±3°		①	Drawn	20.10.2004	Hellwig			
X°	±1,0°								
Angle	TOL								

**RoHS compliant**



Customer-No.	
ASSMANN WSW-No.	A-USBPB-N
Drawing-No.	ASS 1518C CO
Replace	rev06
Sheet	4 / 4