



Chipsmall Limited consists of a professional team with an average of over 10 year of expertise in the distribution of electronic components. Based in Hongkong, we have already established firm and mutual-benefit business relationships with customers from,Europe,America and south Asia,supplying obsolete and hard-to-find components to meet their specific needs.

With the principle of “Quality Parts,Customers Priority,Honest Operation,and Considerate Service”,our business mainly focus on the distribution of electronic components. Line cards we deal with include Microchip,ALPS,ROHM,Xilinx,Pulse,ON,Everlight and Freescale. Main products comprise IC,Modules,Potentiometer,IC Socket,Relay,Connector.Our parts cover such applications as commercial,industrial, and automotives areas.

We are looking forward to setting up business relationship with you and hope to provide you with the best service and solution. Let us make a better world for our industry!



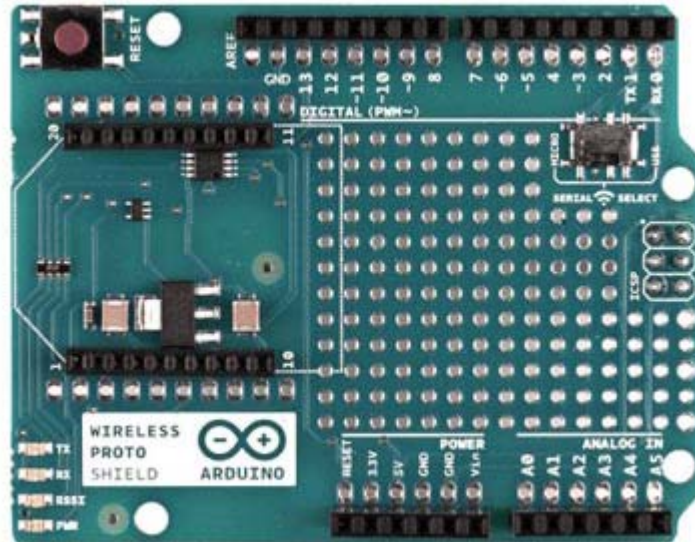
## Contact us

Tel: +86-755-8981 8866 Fax: +86-755-8427 6832

Email & Skype: info@chipsmall.com Web: www.chipsmall.com

Address: A1208, Overseas Decoration Building, #122 Zhenhua RD., Futian, Shenzhen, China





# ARDUINO WIRELESS PROTO SHIELD

Code: A000064

The Wireless Proto shield allows an Arduino board to communicate wirelessly using a wireless Xbee module or similar

- The **Wireless Proto shield** allows an Arduino board to communicate wirelessly using a wireless module. It is based on the Xbee modules from Digi, but can use any module with the same footprint. The module can communicate up to 100 feet indoors or 300 feet outdoors (with line-of-sight). It can be used as a serial/usb replacement or you can put it into a command mode and configure it for a variety of broadcast and mesh networking options. The shields breaks out each of the Xbee's pins to a through-hole solder pad.

**This shield doesn't have the SD socket.**



An on-board switch allows the wireless module to communicate with the USB-to-serial converter or with the microcontroller.

## Getting Started

You can find in the Getting Started section all the information you need to configure your board, use the Arduino Software (IDE), and start tinker with coding and electronics.

<https://www.arduino.cc/en/Guide/HomePage>

- **OSH: Schematics**

Arduino Wireless Proto Shield is open-source hardware! You can build your own board using the following files:

EAGLE FILES IN .ZIP

<https://www.arduino.cc/en/uploads/Main/arduino-wireless-proto-shield-reference-design.zip>

SCHEMATICS IN .PDF

<https://www.arduino.cc/en/uploads/Main/arduino-wireless-proto-shield-schematc.pdf>

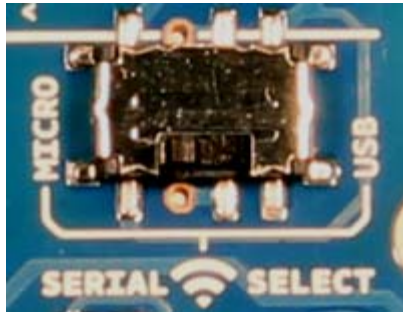
## Switch Settings

The Wireless Proto shield has an on-board switch labelled Serial Select. It determines how the Xbee's serial communication connects to the serial communication between the microcontroller (ATmega8 or ATmega168) and USB-to-serial chip on the Arduino board.



When in the Micro position, the DOUT pin of the wireless module is connected to the RX pin of the microcontroller; and DIN is connected to TX. The wireless module will then communicate with the microcontroller. Note that the RX and TX pins of the microcontroller are still connected to the TX and RX pins (respectively) of the

USB-to-serial converter. Data sent from the microcontroller will be transmitted to the computer via USB as well as being sent wirelessly by the wireless module. The microcontroller will not be programmable via USB in this mode.



With the switch in the USB position, the DOUT pin the wireless module is connected to the RX pin of the USB-to-serial converter, and DIN on the wireless module is connected to the TX pin of the USB-to-serial converter. This means that the module can communicate directly with the computer. The microcontroller on the board will be bypassed. To use the shield in this mode, you must program the microcontroller with an empty sketch (shown below), or remove it from the board.

Empty sketch:  
`void setup() { }`  
`void loop() { }`

[GetCode]<https://www.arduino.cc/en/Main/ArduinoWirelessShield?action=sourceblock&num=1>

## Networking

The Wireless Proto shield can be used with different modules with the same footprint as the XBee modules. The instructions below are for the **XBee 802.15.4 modules** (sometimes called "Series 1" to distinguish them from the Series 2 modules, although "Series 1" doesn't appear in the official name or product description) and also for the **XBee ZNet 2.5** or **XBee ZB** modules, both known as "Series 2" modules. All the modules, basically have the same type of configuration parameters, but differ by the function that they implement and the topologies of networks that they can create. Can communicate with each other only modules of the same family.

## Addressing

There are multiple parameters that need to be configured correctly for two modules to talk to each other (although with the default settings, all modules

should be able to talk to each other). They need to be on the same network, as set by the **ID** parameter (see "Configuration" below for more details on the parameters). The modules need to be on the same channel, as set by the **CH** parameter. Finally, a module's destination address (**DH** and **DL** parameters) determine which modules on its network and channel will receive the data it transmits. This can happen in a few ways:

- If a module's **DH** is 0 and its **DL** is less than 0xFFFF (i.e. 16 bits), data transmitted by that module will be received by any module whose 16-bit address **MY** parameter equals **DL**.
- If **DH** is 0 and **DL** equals 0xFFFF, the module's transmissions will be received by all modules.
- If **DH** is non-zero or **DL** is greater than 0xFFFF, the transmission will only be received by the module whose serial number equals the transmitting module's destination address (i.e. whose **SH** equals the transmitting module's **DH** and whose **SL** equals its **DL**).

Again, this address matching will only happen between modules on the same network and channel. If two modules are on different networks or channels, they can't communicate regardless of their addresses.

For the "Series 2" modules you must choose which firmware put on the module to give it Coordinator, Router or End Device functionality. Series 2 use only serial low (**SL**) and serial high (**SH**) for addressing.

## Configuration

Here are some of the more useful parameters for configuring your Xbee module. For step-by-step instructions on reading and writing them using AT commands, see the:

- guide to the Wireless shield with the 802.15.4 modules.  
<https://www.arduino.cc/en/Guide/ArduinoWirelessShield>
- guide to the Wireless shield with the ZNet 2.5 modules.  
<https://www.arduino.cc/en/Guide/ArduinoWirelessShieldS2>

Make sure to prepend **AT** to the parameter name when sending a command to the module (e.g. to read the **ID** parameter, you should send the command **ATID**).

<i>Command</i>	<i>Description</i>	<i>Valid Values</i>	<i>Default Value</i>
<b>ID</b>	The network ID of the XBee module.	0 - 0xFFFF	3332
<b>CH</b>	The channel of the XBee module.	0x0B - 0x1A	0X0C
<b>SH</b> and <b>SL</b>	The serial number of the XBee module ( <b>SH</b> gives the high 32 bits, <b>SL</b> the low 32 bits). Read-only.	0 - 0xFFFFFFFF (for both <b>SH</b> and <b>SL</b> )	different for each module
<b>MY</b>	The 16-bit address of the module.	0 - 0xFFFF	0
<b>DH</b> and <b>DL</b>	The destination address for wireless communication ( <b>DH</b> is the high 32 bits, <b>DL</b> the low 32).	0 - 0xFFFFFFFF (for both <b>DH</b> and <b>DL</b> )	0 (for both <b>DH</b> and <b>DL</b> )
<b>BD</b>	The baud rate used for serial communication with the Arduino board or computer.	0 (1200 bps) 1 (2400 bps) 2 (4800 bps) 3 (9600 bps) 4 (19200 bps) 5 (38400 bps) 6 (57600 bps) 7 (115200 bps)	3 (9600 baud)

Note: although the valid and default values in the table above are written with a prefix of "0x" (to indicate that they are hexadecimal numbers), the module will not include the "0x" when reporting the value of a parameter, and you should omit it when setting values.

Here are a couple more useful commands for configuring the XBee module (you'll need to prepend AT to these too).

<i>Command</i>	<i>Description</i>
<b>RE</b>	Restore factory default settings (note that like parameter changes, this is not permanent unless followed by the <b>WR</b> command).
<b>WR</b>	Write newly configured parameter values to non-volatile (long-term) storage. Otherwise, they will only last until the module loses power.
<b>CN</b>	Exit command mode now. (If you don't send any commands to the module for a few seconds, command mode will timeout and exit even without a <b>CN</b> command.)

For more details on configuring the XBee module, see the 802.15.4 modules product manual or the ZB modules product manual from Digi International.

<http://www.digi.com/products/wireless-wired-embedded-solutions/zigbee-rf-modules/zigbee-mesh-module/xbee-zb-module#docs>

<http://www.digi.com/products/wireless-wired-embedded-solutions/zigbee-rf-modules/zigbee-mesh-module/xbee-zb-module#docs>



<https://store.arduino.cc/usa/arduino-gsm-shield-2-antenna-connector> 12-7-17